

### Zinn Launches 'Poop Session' For Transfers

Sophomore, junior and senior students transferring to A&M from other colleges will have an opportunity to learn a little bit about their new school at a special "transfer student orientation session" Friday morning at 9 o'clock, according to Director of Student Affairs, Bennie A. Zinn.

"Students transferring to A&M with less than 30 hours are classed as freshmen and must attend the freshmen orientation program," Zinn said. "But upperclassmen transfers are treated by the college as returning students. In the past, no attempt has been made to help these men adjust to their new surroundings."

Zinn said he has sent post cards to 100 upperclassmen transfers asking them to meet on the campus Friday morning for a brief orientation program.

"This is my own idea," Zinn said. "We have been losing a lot of junior college people simply because they feel lost when they get to A&M and nobody seems to care. These students are not freshmen, but they are new students. Some sort of orientation program should be set up for them."

An orientation program for these transfer students was initiated last year, said Zinn, but the cards were mailed too late and only 35 were able to attend.

"We covered a lot of ground in the three-hour session last year, and I think the boys got a lot out of it," he said. "We hope to have more boys and a better program this year."

"There is an awfully lot to say about A&M to any group of new students, so we'll have to talk long and hard in the short time we have."

"If the program is a success this year, we may be able to expand it next year," Zinn said.

a **Swingline stapler** no bigger than a pack of gum!



**98¢**

Including 1000 Staples

A do-it-yourself kit in the palm of your hand! Unconditionally guaranteed, Tot makes book covers, fastens papers, does arts and crafts work, mends, tacks...no end of uses!

Buy it at your college book store.



Swingline Cub stapler, \$1.29

Swingline INC. Long Island City, New York, N.Y.

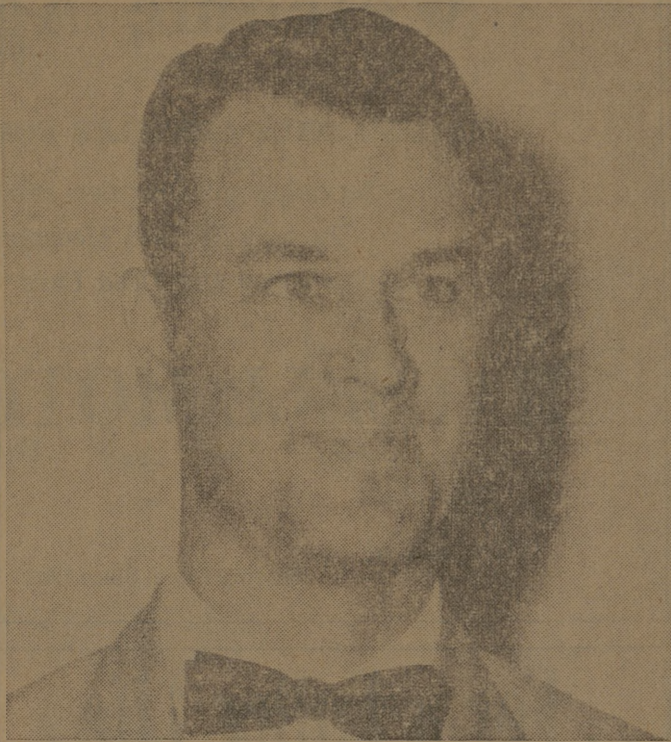
Your Swingline

**STAPLER**

May Be Purchased

at

The Exchange Store "Serving Texas Aggies"



**New Vet Profs**  
Dr. Chester F. Meinecke (left) and Dr. Lamar H. Carroll will begin their duties Monday as new members of the Department of Veterinary Medicine. Dr. Carroll is a



native of Bryan and a graduate of A&M, Class of '58, while Dr. Meinecke is a native of Herkimer, Kan., and a graduate of Kansas State University.

### DR. VANCE MOYER

## Professor Consults At Electronic Meet

Dr. Vance Moyer recently participated as a special Department of Defense consultant in meteorology at sessions of the Electro-magnetic Propagation Working Group of the Inter Range Instrumentation Group at Fort Walton Beach and Eglin AFB, Fla. He is associate professor of meteorology and coordinator of radar meteorology.

The sessions were attended by representatives of the Atlantic Missile Range, the Eglin Gulf Test

Range, the Pacific Missile Range and White Sands Proving Grounds. Dr. Moyer also presented a technical paper on "Meteorological Instrumentation for Eglin Gulf Test Range," containing the final results and recommendations of A&M College Research Foundation Project 218, "Range Support Meteorological Instrumentation for Eglin Gulf Test Range, Phase 11 (Vertical)."

"Radiometeorological Support of Vertical Missile Test Ranges," was discussed by Dr. Moyer, who is one of the country's leading meteorologists, at the Northwest Florida Section of the Institute of Radio Engineers, held at Fort Walton Beach.

Dr. Moyer also presented three seminars for Group and Project Mathematicians, Air Proving Ground Center, Eglin AFB, recently on "Fundamentals of Radiometeorology and Their Applications in Missile Tracking." While at the AFB, Dr. Moyer consulted with the Air Force chief and senior advisors of the Long Range Planning and Advisory Office of the Center.

### Plans Announced For Prison Rodeo In Huntsville

Special to The Battalion HUNTSVILLE—A star-studded cast of the nation's top entertainment personalities will make personal appearances here each Sunday in October for the 29th Annual Texas Prison Rodeo.

Opening the fast-moving, two-hour event will be Ricky Nelson, versatile young star, Sunday, Oct. 2. Allen Case (The Deputy) and The Crew-Cuts will appear Oct. 9; Molly Bee and Bo Diddley Oct. 16; John Wayne and Frankie Avalon Oct. 23; Jimmie Rodgers and Neil Sedaka Oct. 30.

Sharing honors with these entertainment celebrities will be outlaw inmate riders contesting the toughest prison rodeo stock ever assembled.

Other outside attractions include a Girls' Barrel Race, trick riding and calf roping.

Eyes Examined Glasses Fitted

When in doubt about your eyes or your glasses

CONSULT

**DR. J. W. PAYNE**  
OPTOMETRIST

Masonic Building Bryan, Texas  
Next To Palace Theatre

## Hotard's CAFETERIA

"where the art of cooking is not lost"

Conveniently Located in the Townshire Shopping Center

Plenty of Parking Space

Member Certified Associated Restaurants

## LOU'S TRADING POST

NOW HAS PLENTY OF ROOM AND LOTS OF TIME FOR EVERY CUSTOMER

**"LOUPOT'S, WHERE AGGIES TRADE & SAVE"**

Free Parking In Rear

SPECIALS GOOD THUR. - FRI. - SAT.

IMPERIAL **SUGAR** 5 Lb. Bag **43c**

SHORTENING **MINIMAX** 3 Lb. Can **49c**

GOLD MEDAL **FLOUR** 5 Lb. Bag **39c**

Swift Premium Beef **Round Steak** Lb. **69c**

Mohawk — Sugar Cured **Hams** Shank Portion Lb. **39c**

Hohawk **Sliced Bacon** 2 Lb. Pkg. **98c**

Fresh Medium **Gulf Shrimp** Lb. **59c**

HUNT'S REGULAR <b>CATSUP</b> 6 14-Oz. Bottles	<b>1.00</b>	Good Value
LIBBY'S FAMILY <b>RIPE OLIVES</b> No. 1 Tall	<b>3/1.00</b>	<b>NAPKINS</b>
LIBBY'S <b>BEEF STEW</b> 2 24-Oz. Cans	<b>89c</b>	4 Pkgs. 200 <b>\$1.00</b>
DEL MONTE <b>VIENNA SAUSAGE</b> 5 1/2 Size Cans	<b>1.00</b>	Como Bathroom <b>TISSUE</b>
LIBBY'S <b>PINEAPPLE JUICE</b> 4 46-Oz. Cans	<b>1.00</b>	16 Rolls <b>\$1.00</b>
DEL MONTE <b>TOMATO JUICE</b> 3 46-Oz. Cans	<b>1.00</b>	Swindler's Large <b>EGGS</b> Doz. <b>49c</b>
DEL MONTE <b>FRUIT COCKTAIL</b> 4 No. 303 Cans	<b>1.00</b>	Flying Jib—Breaded <b>SHRIMP</b> 10-Oz. Pkg. <b>39c</b>
PENTBHOUSE <b>ELBERTA PEACHES</b> 4 No. 2 1/2 Cans	<b>1.00</b>	T-V Frozen <b>ORANGE JUICE</b> 4 6-Oz. Can <b>69c</b>
AUSTEX <b>PEARS</b> 5 No. 303 Cans	<b>1.00</b>	Nabisco Saltine <b>CRACKERS</b> Lb. Box <b>27c</b>
LIBBY'S <b>TOMALES</b> 4 No. 300 Cans	<b>1.00</b>	
LIBBY'S <b>LIMA BEANS</b> 4 No. 303 Cans	<b>1.00</b>	
LIBBY'S CUT <b>GREEN BEANS</b> 5 No. 303 Cans	<b>1.00</b>	
RENOVON FRENCH STYLE <b>GREEN BEANS</b> 6 No. 303 Cans	<b>1.00</b>	
LIBBY'S SLICED <b>BEETS</b> 7 No. 303 Cans	<b>1.00</b>	
ROSEDALE CREAM STYLE OR WHOLE KERNEL <b>GOLDEN CORN</b> 7 No. 303 Cans	<b>1.00</b>	
DEL MONTE <b>GREEN PEAS</b> 5 No. 303 Cans	<b>1.00</b>	
RENOVON <b>TOMATOES</b> 8 No. 300 Cans	<b>1.00</b>	
LIBBY'S DARK BROWN <b>BEANS and TOMATO SAUCE</b> 7 14-Oz. Cans	<b>1.00</b>	
KRAFT'S SLICED <b>AMERICAN or PIMENTO CHEESE</b> 8-Oz. Pkg.	<b>29c</b>	
KRAFT'S PURE <b>GRAPE JELLY</b> 18-Oz. Jar	<b>27c</b>	

## GRAPES

Thompson Seedless Lb. **9c**

Yellow **ONIONS** 3 Lbs. **19c**

Yellow **SQUASH** 2 Lbs. **25c**

Fresh **TOMATOES** Lb. **15c**

*Best in Bryan*

# ORR'S

*Super Markets*

2 CONVENIENT LOCATIONS  
200 E. 24th Street ..... Downtown  
3516 Texas Avenue ..... Ridgcrest