

Tigers Start Practice With Heavy Squad

By RUSSELL BROWN
Sports Correspondent

Rainy weather greeted forty gridiron hopefuls in College Station as the A&M Consolidated Tigers opened drills in preparation for District 19-AA competition.

Head Coach Ed Logan and Assistant Coach Jack Churchill will have the heaviest crew in many a year as 29 footballers, including 11 lettermen, will vie for the top 11 positions on the varsity string. Eleven freshmen reported for the "B" squad with five or six more due to report later.

Coach Logan will be seeking to improve his second-place showing behind Koy, Lynn and Company of Bellville in last year's 21-AA race, his first as a head coach at A&M Consolidated. Logan compiled a 5-3-1 record with a 3-1 loop count.

Missing from last year's squad will be seven gridsters representing 19 numerals' experience, including All-District center Joel Mills, second-team halfback Dee Smith and second-team end Virden Smith.

Leading the Tiger charge this season will be senior All-District tackle Vic Clark, possibly moving to a fullback spot on Logan's

hard-hitting offensive platoon. Clark tipped the scales at 210 last year in pacing the Bengal line with Mills, but the rugged two-letterman has trimmed down to 188 for backfield and middle guard duty.

Other returning lettermen on the senior-laden squad will be honorable-mention quarterback Condry Pugh, a senior three-letterman slated for man-under duties or halfback chores; three senior guards: Mike Bloom, a rugged defensive lineman; George Outlaw, a scrappy defensive guard with two letters' service; and Bob White, 180-pound one-letterman and starting guard.

Completing the lettermen in the line are 205-pound senior Alex Quisenberry, second team All-District performer from his tackle post; 200-pound tackle Mark Luther, a senior letterman; starting end Bob Adams, 170-pound senior; and junior center Charles Roebler, who played behind Mills last season. Senior letterman John Pedigo and junior speedster Cyril Burke will return to halfback slots in the backfield.

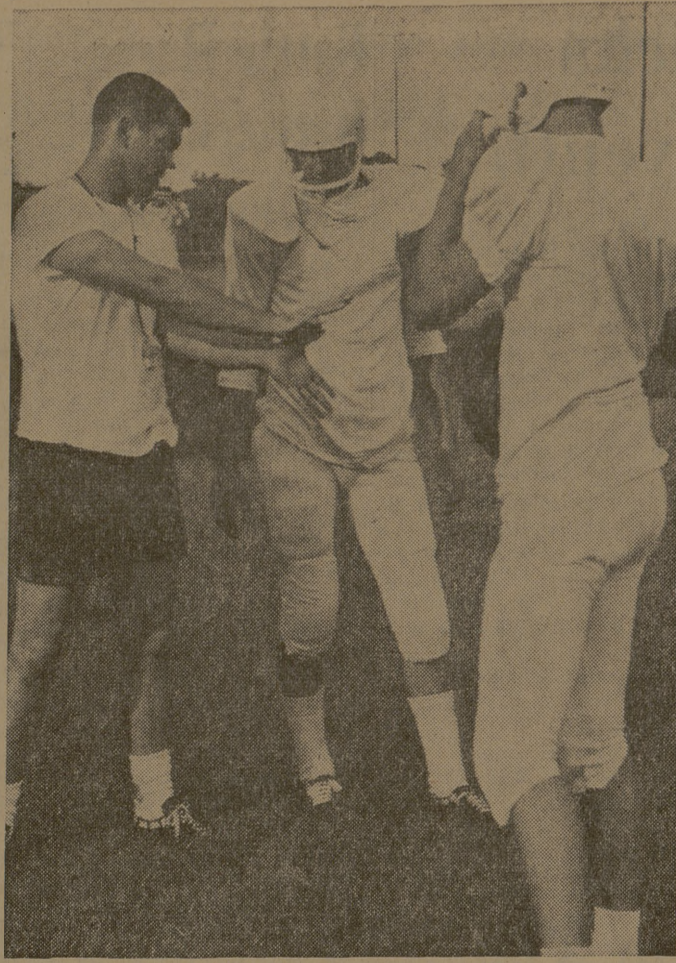
Non-lettermen back include 13 performers from last year's varsity and "B" squads, including 155-pound junior end Larry Ran-

dolph and 155-pound junior signal caller Russell Welch. Both are tabbed for possible starting assignments.

The main Tiger asset for 1960 will be size coupled with experience. A probable starting 11 could average 175 plus with the front line weighing in at 180. Sixteen letters of offensive and defensive left add to the brightening situation. The Bengals are picked to cop 19-AA with the new alignment of Caldwell, Cameron, Hearne, Rockdale and Consolidated.

The big question marks in Logan's defensive-minded club will be depth, mainly in the backfield and at the terminals; the success of the possible switch of Clark to fullback and Pugh to halfback; and the lack of experience on the bench.

Drills continue until the Bengals' first tilt on Sept. 2 against old foe Navasota. Coach Logan is still trying to fill an open date away on Sept. 9, a home-and-home series with an A, AA, or AAA club. Other non-district foes are Madisonville, Giddings, Crockett and Huntsville.



CHS Workouts

A&M Consolidated High School Coach Ed Logan instructs Russel Welch in receiving the snappack from the center as Condry Pugh looks on. The Tigers have opened their football workouts in preparation for their season opener Sept. 2 against Navasota. Logan said one of his heaviest squads in recent years reported for the workouts.

CONTINENTAL AIRLINES

DALLAS

Quick connections there to
LUBBOCK AMARILLO
MIDLAND-ODESSA

VIA **JET POWER VISCOUNT II**

Call your Travel Agent, or Continental at VI 6-4789

BATTALION CLASSIFIED

WANT AD RATES
10 day \$4 per word
24 per word each additional day
Minimum charge—40¢
DEADLINES
8 p.m. day before publication
Classified Display
80¢ per column each
each insertion
PHONE VI 6-6415

FOR RENT
Nicely furnished four room apartment with garage. Three blocks from Main Postoffice. 306-A Second St. or phone VI 6-6481. 1311c

1. For Rent—duplex apartment furnished and unfurnished.
2. one and two bedrooms
3. half-way between Bryan and College Station off College Ave. on Duncan St.
4. Call TA 2-6521, day. TA 3-1786, night. 1311fn

College Hills near College. Spacious one bedroom apartments. Modern furniture, lecture walls, nice floors, single closet space, garage. Adults only. \$60.00 without utilities. Phone Sidney Parker TA 2-3781 weekdays. VI 6-0031 after 7 p. m. all day, weekends. 1301fn

Two bedroom unfurnished three year old apartment. Stove and refrigerator furnished. 509 First Street. VI 6-8150. 1301fn

Air conditioned and well furnished large two bedroom duplex apartment. Trees and nice yard. Near A&M Campus. Phone VI 6-4812. 1291fn

Nicely furnished small house. Near Shopping Center, bus, and washer/dryer. Trees, garage. Rent very reasonable. 208 W. Duncan. TA 3-6589. 1301fn

Student apartments North Gate. Newly refurnished. \$25.00 to \$45.00. VI 6-6165. 1281fn

Furnished two bedroom house. 612 Highland. VI 6-7034. 1271fn

Two bedroom duplex apartment with range and refrigerator, washer connections. 220 wiring, carpet. 869 Montclair, College Station. Inquire at 811 Montclair. VI 6-4486. 1271fn

One bedroom brick duplex apartment. Stove, refrigerator, and air conditioner furnished. Central heating, 220 wiring, carpet. Rent \$60 per month. 312 Second Street. Phone VI 6-8468. 1251fn

Two bedroom house, near college, redecorated. 400 Cooner. \$43.00 per month. VI 6-4455. 1221fn

Sewing machines, Fruit Fabric Shop. 981fn

Apartment two blocks from campus. New building, nicely furnished, walk-in closets, hardwood floors, formica drain-board, venetian blinds, 220 wiring. VI 6-7248. 1171fn

Furnished room in home, one block south of drill field. Also large room over double garage equipped for light house-keeping. VI 6-5638. 1131fn

Two bedroom, unfurnished apartment. 220 wiring and attic fan. Near Crockett School. Phone VI 6-6660 after 5:00 p. m. 721fn

FOR SALE
(1) Colgate Window Air-Conditioner, model No. 244.5562150, 230 volt-60 cycle, AC, with automatic control and time setting. Can be seen by calling Victor 6-7756, Placement Office. Sealed bids will be received in the office of the Business Manager, Coke Building, until 10:30 a. m., August 29, 1960. The right is reserved to reject any and all bids and to waive any and all technicalities. Address Business Manager, A. and M. College of Texas, College Station, Texas, for further information. 1312c

Bamboo draperies about the size of the closet and kitchen doorway in Hensel Apartments. Call V 16-4809. 1311c

4,000 cfm water cooler, \$65.00. See at C-13-A College View or call VI 6-8105. 1302c

FEMALE HELP WANTED
Waitress wanted. Must be over 18 years of age. Call for appointment. TA 2-1352. 1311fn

Saleslady—experience helpful but not necessary. Personality and poise essential. Must like people and want to sell. Salary open. Joyce's, 608 S. College. 1302c

Hostess wanted: Experience not necessary. Must be neat in appearance. Apply TRIANGLE RESTAURANT, 3606 S. College Avenue. TA 2-1352. 1281fn

Artist with free hand drawing experience for permanent position. Degree in art or commercial art school graduate desirable. Some typing experience essential. Call or write Texas Forest Service, VI 6-4771 College Station. 1293c

WORK WANTED
Will keep children in my home. 100 A Fairview. VI 6-8636. 1311c

Azie wife would like to keep baby or small child for working mother. 509 A Calpepper. VI 6-4495. 1302c

Attention Working Mothers: All day nursery, 8 to 5. Have had nurse's training. \$25.00 per month, per child. VI 6-6145. 1081fn

Why wait until last minute to get your Thesis reports, etc. to Br-City Secretarial service? Electric typewriters, offset printing, negatives and metal plates made. 3408 Texas Ave. VI 6-5786. 871fn

smart people are want-ad minded!

Early Bird Shoppe, Inc
Curtains — Fabrics — Toys
Ridgecrest Village

ENGINEERING AND ARCHITECTURAL SUPPLIES
• BLUE LINE PRINTS
• BLUE PRINTS • PHOTOSTAT
SCOATES INDUSTRIES
993 Old Sulphur Springs Road
BRYAN, TEXAS

SOSOLIK'S
TV - RADIO - PHONO SERVICE
713 S Main TA 2-1941

TYPEWRITERS
Rental - Sales - Service - Terms
Distributors For:
Royal and Victor
Calculators & Adding Machines
CATES TYPEWRITER CO.
909 S. Main TA 2-6000

Hotard's Cafeteria Where the Art of Cooking Is Not Lost

GOLD SEAL VEAL—CROWN

ROAST

39¢

LB.

Mohawk Slab
BACON by the piece Lb. **49¢**
Armour
FRANKS 12-Oz. Size **39¢**
Mohawk Canned
PICNICS 3 Pound Can **1.89**
Armour's Star
BOLOGNA Lb. **39¢**

T-V Frozen
ORANGE JUICE
4 6-Oz. Cans **69¢**

Birds Eye
BABY LIMA BEANS 3 10-Oz. Pkgs. 69¢

T V
CUT CORN or GREEN PEAS 5 10-Oz. Pkgs. 89¢

Birds Eye Sliced
STRAWBERRIES 4 10-Oz. Pkgs. 89¢

Desert Sweet
LEMONADE 6-Oz. Can 10¢

BOOTH BREADED—ROUND
SHRIMP 10-Oz. Pkg. **49¢**

Drink Refreshing

COCA-COLA

12 Btl. Ctn. **39¢** Plus Deposit

RINSO BLUE Detergent Giant Pkg. **59¢**

CRISCO Shortening 3 Lb. Can **63¢**

CHUNK TUNA Breast-0-Chicken 1/2 Size Can **27¢**

CHEESE FOOD Chef's Delight 2 Lb. Loaf **59¢**

Seedless
GRAPES Lb. **10¢**

Best in Bryan

ORR'S

Super Markets

2 CONVENIENT LOCATIONS
200 E. 24th Street Downtown
3516 Texas Avenue Ridgecrest

SPECIALS GOOD THUR. - FRI. - SAT. AUG.—18 - 19 - 20

Aggies on Duty

Army 2nd Lt. Edward A. Wueste, '59, has been assigned as assistant platoon leader of the 458th Transportation Company at the U. S. Army Transportation Terminal Command at Camp Leroy Johnson, New Orleans, La.

Lt. Wueste entered the Army in April and attended the Transportation Officers Basic School at Ft. Eustis, Va.

Army 1st Lt. George R. Crane, '57, is scheduled to participate with other personnel from the 101st Airborne Division in Exercise Bright Star at Ft. Bragg, N. C., this week.

BUY FIRESTONE GUARANTEED NEW TREADS AT TRUCKLOAD PRICES

OUR TRUCKLOAD PRICE IS ONLY... 988 Plus tax and recappable tire

6.70-15 or 7.50-14 TUBELESS or TUBE-TYPE

- ★ Same tread DESIGN . . .
- ★ Same tread WIDTH . . .
- ★ Same tread DEPTH . . .

as the Firestone tires on new 1960 cars

EASY TERMS
Buy at today's prices pay later

Firestone where your dollar buys MILES more

SEE US FOR TIRES
★ our QUALITY is unmatched!
★ our PRICES always LOW!
\$1 DOWN \$1 A WEEK

Geo. Shelton, Inc.
College Ave. At 33rd Free Parking TA 2-0139—TA 2-0130