

# Cadets Enter SWC Meet

Paced by varsity field events men and freshman sprinters, Coach Charley Thomas' A&M track and field team will enter the annual Southwest Conference meet in Ft. Worth Friday and Saturday.

Thomas will enter some 60 men in both varsity and frosh divisions.

**Varsity**

The varsity will be led by Henry Bonorden in the shot put (55-0); Owen Hill of Dallas, discus (168-6 1/2); Jim Brewer, Clovis, N. M., (220-11 1/2), Newton Lamb, Houston (203-0) and Jim Long, Westport, Conn. (188-9) in the javelin; Thad Crooks, Hooks, half-mile (1:53.4) along with Charles Hajovsky, El Campo, half-mile (1:55.4) and Malcolm Hardee, Groveton, mile (4:23).

**Fish**

The Aggie Fish will be led by its Big Three of Ed Williams of Jena, La., and Curt Roberts of

Carlsbad, N. M., in the sprints and George Tedford of Shreveport, quarter-mile.

Williams and Roberts placed one-two in both dashes at Austin last Thursday night in the final tuneup with Texas and Rice. Williams won both races in 9.6 and 21.1 for his best times this year while Roberts has done 9.7 and 21.9.

Tedford, who joins the two sprinters on the 440-yard relay

**VARSITY SUMMARIES**  
 Shot Put—Henry Bonorden (55-0)  
 Discus—Owen Hill (168-6 1/2)  
 Javelin—Jim Brewer (220-11 1/2)  
 Newton Lamb (203)  
 Jim Long (188-9)  
 High Jump—Bobby Thomas (6-4)  
 Charles Merka (6-2)  
 Pole Vault—Gail McDaniel (13-0)  
 Robert Sanders (12-7)  
 Hubert Nelson (12-6)  
 Broad Jump—Gail Jacobson (22-3 1/2)  
 Don Tax (21-11 1/2)  
 Hubert Nelson (21-1/2)

**440 Relay—(42.4)**  
 Mile Relay—(3:20.5)  
 Mile Run—Malcolm Hardee (4:23)  
 440 Dash—Hubert Nelson (49.9)  
 Berry Cash (49.9)

**880 Run—Thad Crooks (1:53.4)**  
 Charles Hajovsky (1:55.4)  
 Malcolm Hardee (1:55.5)  
 Berry Cash (49.9)

**Low Hurdles—Ernie Uribe (23.8)**  
 Ron Whiteley (24.3)  
 Two-Mile Run—Fred Dulock (9.45)  
 High Hurdles—Ernie Uribe (15.1)  
 Glen Garrison (15.1)

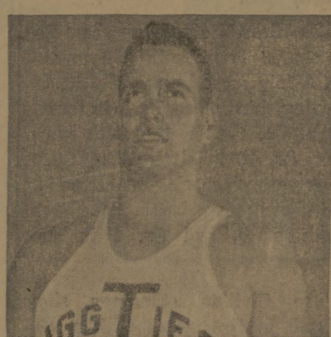
**FRESHMAN SUMMARIES**  
 Shot Put—Charles Hoppe (48-11 1/2)  
 Discus—Terry Robinson (143-8 1/2)  
 Javelin—Paul Pirkle (179-1 1/2)  
 Jerry Hopkins (187-7 1/2)  
 Herb Schroeter (168-4)

**High Jump—Don Deaver (6-4)**  
 Louis Hamil (6-0)  
 Broad Jump—Don Deaver (21-3 1/2)  
 Jack Connor (20-8 1/2)  
 440 Relay—(42.1)  
 Mile Relay—(3:29.3)  
 100 Dash—Ed Williams (9.6)  
 Curt Roberts (9.7)  
 440 Dash—George Tedford (48.5)  
 880 Run—Ken Patranello (1:59.2)  
 Don Dingle (1:59.9)  
 E. L. Ener (2:02)

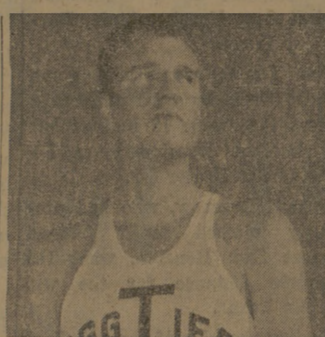
team, has a 48.5 quarter to his credit this year. Tedford also runs on the mile relay team for the Aggie Fish.

The Frosh who have the best chance of scoring in the field events are Charles Hoppe of Bay City, shot put (48-11 1/2); Terry Robinson, La Feria, discus (143-8 1/2); Paul Pirkle, Houston, javelin (179-1 1/2) and Don Deaver, high jump (6-4) and broad jump (21-3 1/2).

**220 Dash—Ed Williams (21.1)**  
 Curt Roberts (21.9)  
 Low Hurdles—Ken Rippstein (25.5)  
 High Hurdles—Ken Rippstein (15.2)



Henry Bonorden  
Shot Put



Newton Lamb  
Javelin

## Bellville Tops Consolidated, 9-2, To Cop District Crown

By RUSSELL BROWN  
CHS Correspondent

A ten-hit attack by the Bellville Brahmas plus a dead pitching arm for the A&M Consolidated Tigers over the Bellville nine a 9-2 win over the Bengals and the District 21-AA championship Tuesday.

Ernie Koy paced the Bellville hitting with a single, double and triple in four trips while driving in two runs. But the biggest factor in the ball game was Tiger hurler Vic Clark's dead wing. Pitching 15 of the Tigers' 17 decisions finally caught up with the Tiger ace's arm, and it went dead in the third frame with the Tigers

on top 2-1.

Larry Randolph finished up for the Tigers, pitching good baseball until the sixth when the hosts unloaded six hits for six runs that buried the Tigers' last hopes for a fourth consecutive District pennant.

Keith Kienecke hurled for the victors, giving up two runs and four hits over the first three stanzas, but the Brahma junior bore down with a 3-2 lead to hold the Tigers runless on one hit and two walks in the last four innings.

Russell Welch's walk, a passed ball and Ben Jackson, single gave the visitors a 1-0 first inning lead

that the Brahmas tied in the second in a single, a fielder's choice, a Tiger miscue and a sacrifice fly.

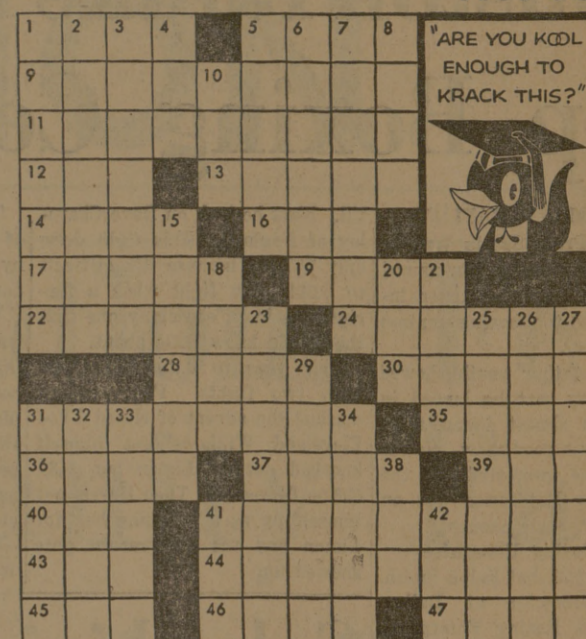
Welch walked again in the third, Jackson singled him to second, and Clark unloaded a double to left to score Welch, but Jackson was cut down at the plate for the final out as the Tigers forged ahead 2-1.

The Brahmas got to Randolph for two runs, one charged to Clark, in the third to grab off enough for the win and went on to tally their six insurance runs in the sixth. Four singles, a double, and a triple highlighted the Brahma parade across the plate.

### KOOL CROSSWORD

No. 15

- ACROSS**
- Money to or from home
  - Followers of Alpha
  - That April 15th feeling
  - You feel more with Kools before
  - Crew cuts or flat-tops
  - Girl pee-gee
  - Kools what you should change to
  - Ten-percenter
  - They bear Hamilton's picture
  - What everyone needs to be
  - Juneau he bought Alaska?
  - But French
  - Sweet potato that sounds like another instrument
  - With the wind out of your sails
  - Mickey, Minnie and Mighty
  - English school
  - Halfway pleasant
  - Yeggs
  - Kin of 5 Across
  - You'll feel a new in Kool
  - Small relation
  - Miss Pitou's game?
  - Kaline, Jolson, Catraz, etc.
- DOWN**
- Guy who watches other guys work
  - Your marks capsulized
  - The 1 Down of boxing
  - It's human to
  - Israeli city
  - Cheer the debating team
  - Houses with the Indian sign
  - Does math
  - Short detective picture
  - Minstrel-show role
  - Duck
  - Sexy kind of stockings
  - Made like Esther Williams
  - Pleasingly depressed condition
  - Lee's home town
  - Rephrased
  - Containers for the female form
  - Moon goddess
  - Famed man in the mask
  - Merman
  - What a Kool does, obviously
  - Campus VIP's
  - A Kool is smoother
  - time
  - He's big on figures
  - Pinch



When your throat tells you it's time for a change, you need a real change...

YOU NEED THE  
Menthol Magic  
OF KOOL



©1960, BROWN & WILLIAMSON TOBACCO CORP.



KOOL ANSWER

# THANKS!

# to the HAM BUYERS

### CHAMPION HAM

\$500

LEWTER GRAIN CO., LUBBOCK, TEXAS

### RESERVE CHAMPION HAM

\$75

JAX DIST. CO., BRYAN, TEXAS by ED.SOUSARES

<p><b>ABILENE</b> Eplen's Restaurant by Mack Eplen</p> <p><b>BALMORHEA</b> Don Weinacht</p> <p><b>BEAUMONT</b> Jim Garrard Zummo Meat Co. by John F. Zummo</p> <p><b>BOERNE</b> Fairoaks Ranch by Jas. F. Grote</p> <p><b>BRADY</b> G. R. White</p> <p><b>BURNET</b> Mr. and Mrs. G. A. Glimp</p> <p><b>BRYAN</b> Albritton Engineering Corp. by Ford D. Albritton, Jr. American Laundry and Dry Cleaners by R. C. Dansby Brazos County Producers Co-op Walter S. Britten by A. J. Yeager Brown-Allen Motor Co. by J. Garland Brown Bryan Auto Supply by E. H. Kokemoor Caldwell's Jewelry by Mrs. John S. Caldwell Central Texas Hardware Co. by E. J. Blazek City National Bank by O. W. Kelley Clayton's Restaurant by J. E. Clayton Conway's by J. H. Conway Corbusier Chevrolet Co. by T. N. Ross</p>	<p>Court's Saddle Shop by Tony Court Davis Auto Supply Co. by G. A. Davis Dishman Pontiac Co. by H. C. Dishman Ellison's Pharmacy by G. Ellison First National Bank by Travis Bryan, Jr. Milton Franklin Furniture &amp; Appliances Howell Lumber Co., Inc. by I. N. Kelley Humble Oil &amp; Refining Co. by W. F. Davis Lilly Ice Cream Co. by Mr. West LaSalle Hotel by J. C. Jaques Lone Star Distributing Co. by Clyde Bailey Miller's Super Market by J. L. Winn The Newman Printing Co. by Louis M. Newman Orr's Super Market by Waldon Orr Parker-Astin, Inc. by H. H. Tanner Parker Lumber Co. by G. S. Parker Dr. Pepper Bottling Co. by G. H. Buchanan Sears, Roebuck Co. by John Brayton The Texan by Victor Stelljes The Triangle by J. A. Ferreri A. M. Waldrop &amp; Co. by A. M. Waldrop</p>	<p>Wehrman's Cafe by H. W. Newport Woodson Lumber Co. by M. A. Perkins</p> <p><b>CARRIZO SPRINGS</b> Edward O. Gardner</p> <p><b>CHEROKEE</b> James Kuykendall</p> <p><b>CHICAGO, ILL.</b> The Griffith Lab., Inc. by C. L. Griffith</p> <p><b>CLARKWOOD</b> Doehne Production Co. by Fred Doehne</p> <p><b>COLLEGE STATION</b> W. T. Berry O. D. Butler by Mr. West O. R. Berry College Station State Bank by T. E. Whitely Harold Franke M. T. Harrington Holick's by John Holick H. O. Kunkle C. M. Laywell Loupot's L. A. Maddox McCall's Humble Service Station by L. E. McCall R. E. Patterson R. C. Potts Harold Redmond Earl Rudder Saddle &amp; Sirloin Club Seniors Saddle &amp; Sirloin Club Juniors Saddle &amp; Sirloin Club Freshmen Saddle &amp; Sirloin Club Sophomores Saddle &amp; Sirloin Club Junior Livestock Team A. M. Sorenson</p>	<p>T. D. Tanksley J. C. Sides Texaco Service Sta. Tastee Freez by Douglas Duff Fred Walker G. M. Watkins Doug Wythe Zarape's Restaurant by Lupe Esquivel</p> <p><b>DALLAS</b> Robert B. Cullum Jack's Meat Service by Jack Kreck Z. Moore</p> <p><b>DENVER, COLO.</b> R. E. Rogers</p> <p><b>FAIRFIELD</b> Mrs. Emma Hill F. S. Hill F. R. Hill</p> <p><b>FT. WORTH</b> John C. Burns Cattle Raisers Supply Co. by Mickey Quinn Right-Weight Co. by M. G. Scroggs Santa Gertrudis Journal by Roger Letz Vit-A-Way, Inc. by E. N. Ratliff</p> <p><b>FRANKSTON</b> First State Bank by Jeff Austin</p> <p><b>HEARNE</b> Dr. T. A. Searcy</p> <p><b>HOUSTON</b> Houston Fat Stock Show by Douglas B. Marshall Houston Fat Stock Show by John Kuykendall Jamail Brothers Food Market by Clarence Jamail</p>	<p>Ralph A. Johnston Herbert G. Turner Ye Olde College Inn by Ernest Coker</p> <p><b>KANSAS CITY, MO.</b> Hereford Journal by Roy Richardson</p> <p><b>KERRVILLE</b> Y-O Ranch by Vernon Jones</p> <p><b>KYLE</b> Litterst &amp; Moore Cattle Co. by Frank Litterst</p> <p><b>LAREDO</b> Laredo Packing Co. by Roberto Salinas</p> <p><b>LLANO</b> Stanley Keese Raymond Winkle</p> <p><b>MARATHON</b> Lightning Ranch by Wm. C. Donnell</p> <p><b>MART</b> A. B. Childers</p> <p><b>OZONA</b> T. A. Kincaid</p> <p><b>PLANO</b> Mrs. Ammie E. Wilson</p> <p><b>SAN ANGELO</b> Swede Hanson</p> <p><b>SAN ANTONIO</b> Henry Fitzhugh</p> <p><b>VALLEY SPRINGS</b> Clarence Osbourn</p> <p><b>WEST COLUMBIA</b> T. M. Smith</p> <p><b>WILMER</b> Bluebird Hog Farm by Tom Cameron</p> <p><b>WINDTHORST</b> Tom Harris</p>
--	---	--	---	--

from SADDLE & SIRLOIN CLUB