

A&M's President Upholds Aggie Traditions Of Soldier, Statesman, Knightly Gentleman

Army General, Land Commissioner, Presidency Make Full Life for Rudder



The College President

President Earl Rudder is congratulated here by Chancellor M. T. Harrington following his promotion to president of A&M effective June 1, 1959, by the A&M College System Board of Directors. A graduate of A&M, President Rudder returned to his alma mater in February, 1958, to become vice president, a post he held until his promotion to president. Prior to World War II he held a position in the A&M College System when he was football coach at Tarleton State College from 1938 to 1941.

James Earl Rudder, born May 6, 1910, in Eden, Concho County, Tex., will be inaugurated the 14th president of A&M tomorrow morning at ceremonies in G. Rollie White Coliseum. The appointment to the presidency of A&M is the culmination of a full and varied career. President Rudder has been teacher, rancher and football coach. He has been successful in civilian as well as military life. In the field of politics, President Rudder has also excelled.

One of Six Sons

President Rudder was one of six sons of Dee Forest Rudder and Ann Powell Rudder. His father farmed and operated a livestock commission business in Eden.

His early education was in the public schools of Eden. Upon graduation from Eden High School in the spring of 1927, he entered John Tarleton Agricultural College (now Tarleton State College).

President Rudder entered A&M in 1930 where he majored in in-

dustrial education and lettered in football. He graduated from A&M in 1932 with a B.S. degree in industrial education and a reserve commission as a second lieutenant of infantry.

Immediately after graduation from A&M in 1932, President Rudder began working for the State Highway Department. In September of 1933 he began coaching football and teaching at Brady High School.

Met Wife

It was while teaching at Brady that President Rudder met his future wife, Miss Margaret Williamson of Menard, another Brady teacher. They were married June 12, 1937. Mrs. Rudder is a 1936 graduate of the University of Texas.

President Rudder returned to John Tarleton Agricultural College in 1938, this time as football coach and teacher. He remained at Tarleton until 1941 when he was called to active duty in the Army as a first lieutenant.

Upon call to active duty, President Rudder was assigned as Company Commander, Company E, 38th Infantry, 2nd Division, Fort Sam Houston, Tex.

Attended Staff School

President Rudder attended Command General Staff School in the fall of 1942 and winter of 1943. After attending the school he returned to the 83rd Infantry Division and was named Assistant G-3 of the division.

In July of 1943, President Rudder was asked to organize and train the 2nd Ranger Battalion. The training took place at Camp Forrest, Tenn.

The Rangers were sent to England in December, 1943. The following month his command was assigned its D-Day mission, scaling 100-foot cliffs at Pointe du Hoc on the Normandy beach.

'more difficult task...'

"No soldier in my command has ever been wished a more difficult task than that which befell the 34-year-old commander of this provisional Ranger Force," said Gen. Omar Bradley, commander of the U. S. Ground Forces in Europe at the time.

Following victory in Europe,

President Rudder spent eight months on special War Department missions. He was released from active duty with the rank of colonel in April of 1946.

Military Decorations

Among the military decorations and awards President Rudder has won are the Distinguished Service Cross, Legion of Merit, Silver Star, Bronze Star with Oak Leaf Clusters, Purple Heart with Oak Leaf Clusters, French Legion of Honor with Croix de Guerre and Palm and Belgian Order of Leopold with Croix de Guerre and Palm.

President Rudder returned to Brady after the war and, among varied interests, served as mayor of Brady from 1946 to 1952.

He was employed by the Brady Aviation Co. in 1953 as public and labor relations counselor.

During this time President Rudder also served as a member on the State Board of Public Welfare.

On Jan. 4, 1955, President Rudder was appointed Commissioner of the General Land Office of the State of Texas. He stepped into an office shaken by scandals in the Veterans' Land Program. In time, suspicion surrounding the program dissolved and the office was returned to a place of integrity and respect in Texas government.

During these post-war years, President Rudder remained active in the Army's Reserve program. As commanding general of the 90th Infantry Division, he was first promoted to brigadier general and now holds the rank of major general.

On Feb. 1, 1958, the A&M Board of Directors appointed President Rudder vice president of the college. He was promoted to the presidency on July 1, 1959, in which capacity he presently serves.

Returned to France

President Rudder returned to France as a member of the presidential party to commemorate the tenth anniversary of the liberation of France.

Beside his various military honors, President Rudder has been the recipient of several other awards and commendations. In 1956 President Rudder received the McCulloch County Distinguished Service

Award. He was presented the Veterans of Foreign Wars Silver Citizenship Award in 1958.

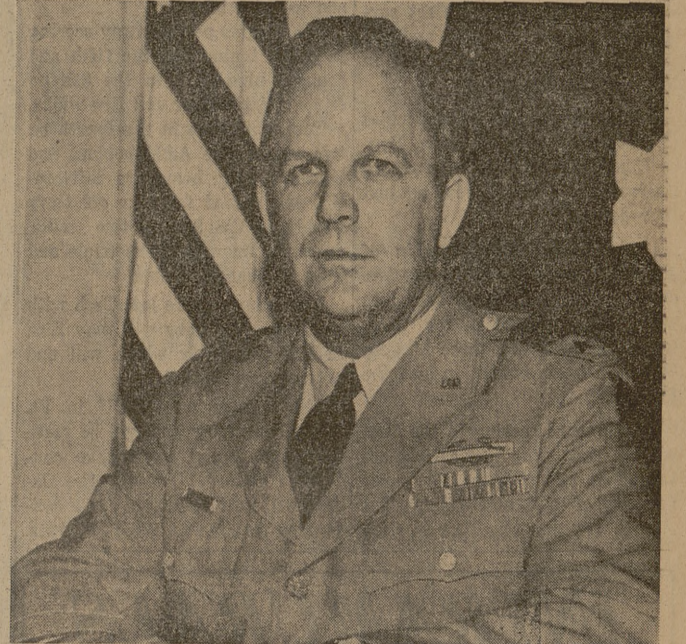
All-American

In 1956 Sports Illustrated named President Rudder to its Silver Anniversary All-American football team.

President Rudder lives with his family in the President's Home, 100 Jones Street, on the campus. The Rudders have five children, James Earl Jr., (Bud) 20; Margaret Anne, 18; Linda, 13; Jane, 12; and Bob, 6. The Rudders are members of the A&M Methodist Church.

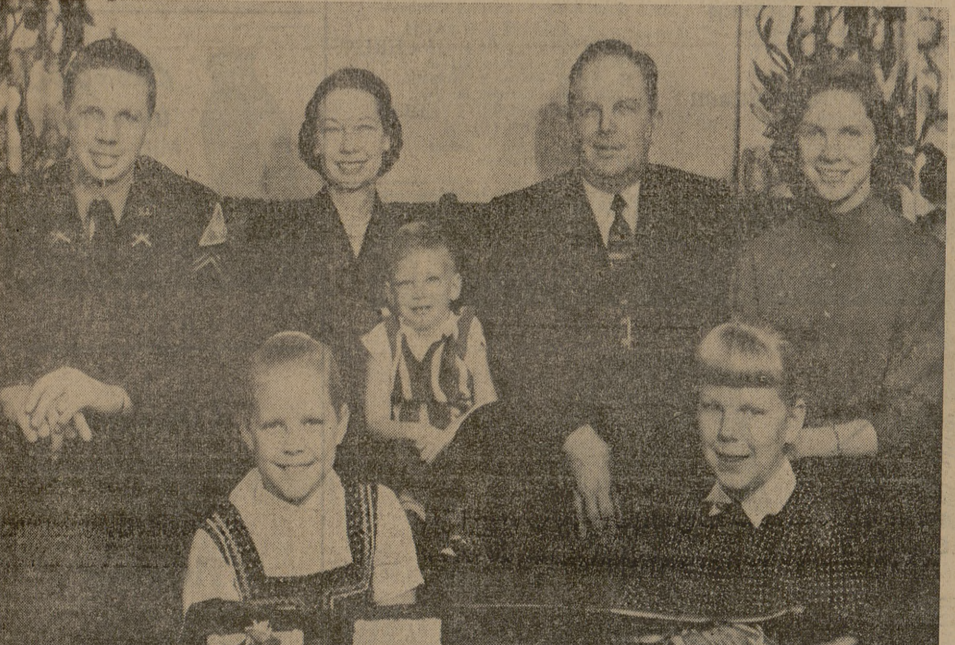
Member of Board

Since 1956, President Rudder has been a member of the Department of the Army General Staff Committee on National Guard and Army Reserve Policy. In November of 1959 he became a member of the Reserve Forces Policy Board. He was appointed to the National Sponsoring Committee, Army Distaff Hall Sponsoring Committee, in February.



The Army Reservist

This picture was taken shortly after President Earl Rudder was promoted to major general in the United States Army Reserve. President Rudder was active in the Army Reserve program following his graduation from A&M in 1932 until he was called to active duty in 1941. Following his separation from active duty he remained active in Army Reserve and was named commander of the 90th Infantry Division, USA, with the rank of brigadier general and was subsequently promoted to major general, his present rank.



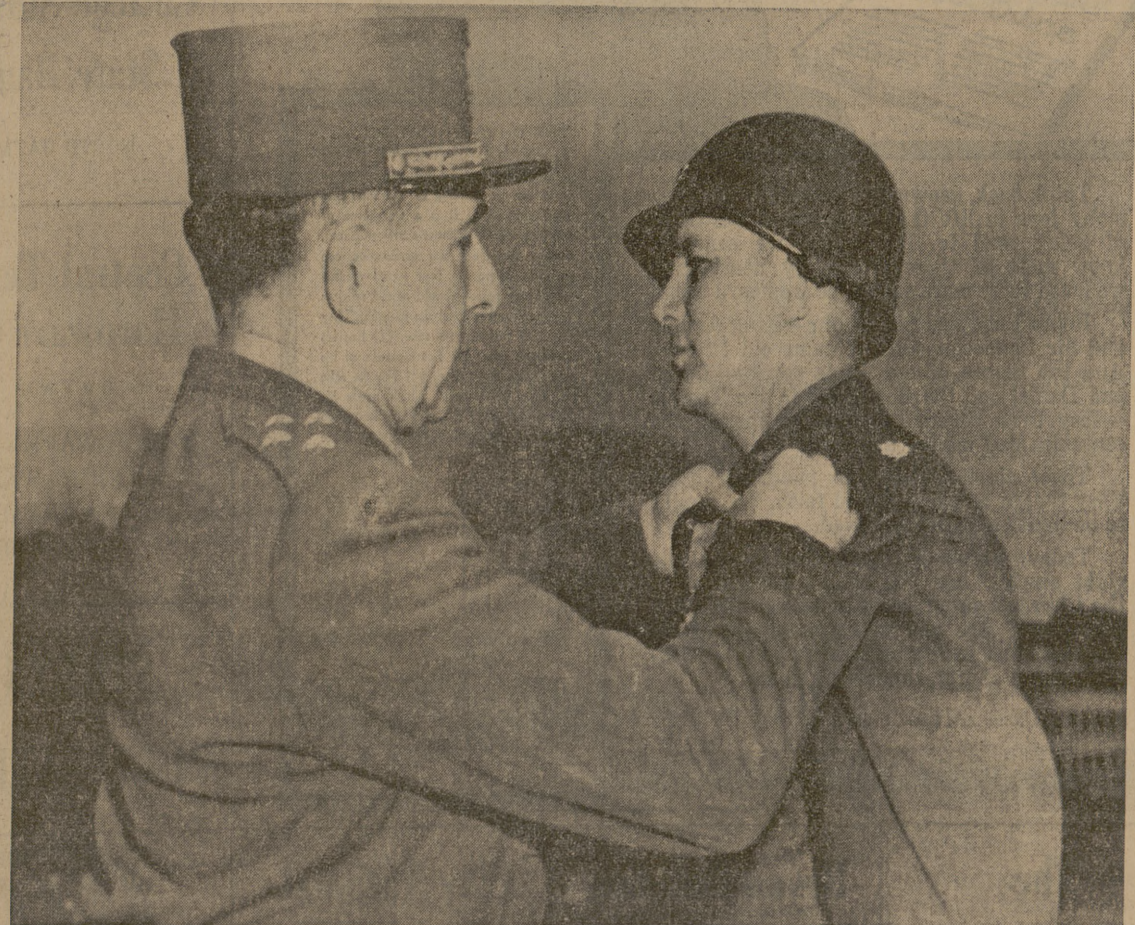
The Family Man

President Earl Rudder has more pride in his family than his other honors and accomplishments and rightly so. President Rudder is shown here with his family in a portrait shot taken shortly before he was named vice president of A&M in February, 1958. In the picture, left to right on back row, are James Earl (Bud) Rudder Jr., Mrs. Earl Rudder, Robert Rudder, President Rudder and Margaret Ann Rudder and kneeling are, left to right, Jane Rudder and Linda Rudder.



The Political Figure

On Jan. 5, 1955, President Earl Rudder was sworn in as Commissioner of the General Land Office of the State of Texas. He stepped into an office shaken by scandals in the Veterans' Land Program. His prior political experience was when he served as mayor of Brady, Tex., from 1946-52. During his time as Land Commissioner, President Rudder brought the office from the depths of scandal back to a respected place in Texas government. This picture shows President Rudder, center, being sworn in as Land Commissioner by then Texas Supreme Court Justice Will Wilson, left, while then Gov. Allan Shivers looks on.



The World War II Hero

French General de Lattre Tassigny is shown in this picture pinning the Croix de Guerre on the chest of President Earl Rudder, then a lieutenant colonel and in command of the 109th Infantry Regiment. President Rudder entered active duty during World War II as a first lieutenant and rose to the rank of colonel when he was released from active duty in April, 1946. President Rudder's military decorations include the Distinguished Service Cross, the Legion of Merit, the Silver Star, the Bronze Star with Oak Leaf Cluster, the Purple Heart with Oak Leaf Clusters, the French Legion of Honor with Croix de Guerre and Palm and the Belgian Order of Leopold with Croix de Guerre and Palm.



The Rancher and Businessman

President Earl Rudder is shown here with some of his sheep on land he owns in McCulloch County. President Rudder presently owns more than 7,000 acres of land in Menard and McCulloch counties and raises cattle and sheep. He has also had other business interests in Brady since 1935.