

Education Fees Tax Deductible

Under one of two conditions, direct costs of education and necessary expenses for travel, meals and lodging while taking

educational courses away from home overnight are deductible on the 1959 Federal income tax return.

RUDDER

(Continued from Page 1)

on in the afternoon so out-of-town guests may leave early.

Representatives of 250 colleges and universities, as well as learned societies and professional associations, will attend the inauguration.

The academic procession will be led by the presidential party, including the president and special guests. Following will be members of the Board of Directors, administrative officers of the college, administrative officers of the college system and former administrative officers in attendance.

Following the former administrators will be the delegates of colleges and universities, learned societies and professional associations. Then will come the delegates representing the State of Texas, including Gov. Daniel, representatives of the Association of Former Students and representatives of the student body and faculty.

Only 14 Presidents

Since Thomas Sanford Gathright was named president in 1876, the college has had 24 administrations. During these 24 administrations, 22 men have served as head of the college at one time or another while only 14, including President Rudder, have been officially designated President.

For one short period, 1883-1890, the college had no president or acting president but instead the chairman of the faculty served as top administrative official.

Clarence E. Carlson, administrative officer for Internal Revenue Service in Bryan, revealed the two conditions:

(1) If the education was undertaken primarily to maintain or improve the skill of a taxpayer required in the performance of his employment duties when the education expense was incurred; or,

(2) If the education was undertaken primarily to meet the express requirements of a taxpayer's employer, or the requirements of applicable law or regulations imposed as a condition for retaining the taxpayer's present employment, salary or position.

Expenses for education may not be deducted if the primary purpose for which the education was undertaken was any of the following:

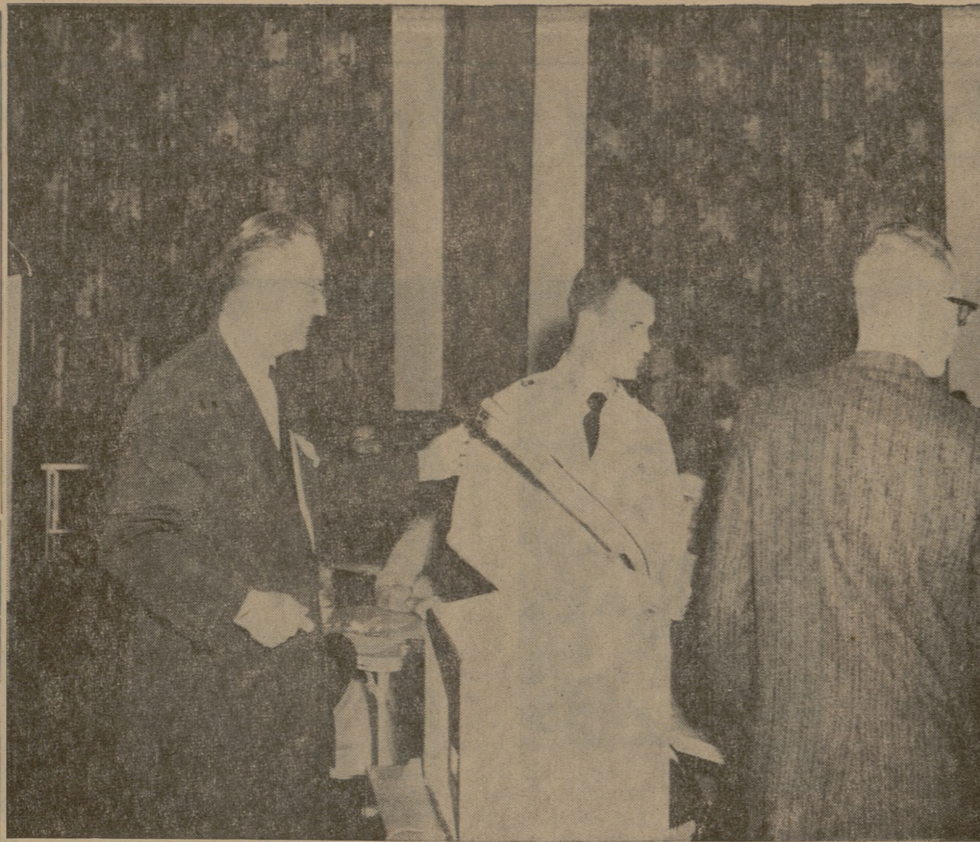
(1) To obtain a new position or a substantial advancement in position.

(2) To fulfill general educational aspirations or any other personal purpose.

(3) To meet the minimum requirements for qualification or establishment of intended trade, business, or specialty.

Direct costs of education such as books, tuition, laboratory fees, etc., are deductible only when deductions are itemized on return Form 1040. One may not deduct these if he takes the standard deduction, uses the tax table, or uses the simple card Form 1040A. Travel expense and the cost of meals and lodging while away from home overnight pursuing qualifying educational activities are also deductible on Form 1040.

Taxpayers with other questions about this subject may get additional information by phoning or visiting the Internal Revenue Service Office.



Awards Presented

Tyrus Timm, head of the Department of Agricultural Economics and Rural Sociology, presents the Rural Sociology Staff Awards Night. The event was held in the Award to Leo Rigsby from Canyon, back to picture, and Ben Dickerson from Houston at the annual "Spring Roundup and Awards Night." The event was held in the Memorial Student Center last night.

For Coming Weekend's Services

Area Churches Schedule Full Slate Of Activities

A&M Methodist Church
Church School will be held at 9:45 a.m., with Morning Worship at 10:55 a.m. Sermon topic for the morning service will be "So You Don't Feel Like It!" Evening Worship is at 7 p.m., with Dr. Edmund Heinsohn of Austin as guest speaker.

A&M Presbyterian Church
Sunday School is at 9:45 a.m. "Where Are You?" will be the sermon topic for Morning Worship at 11 a.m. Junior Choir Rehearsal will be held at 4 p.m., to be fol-

lowed by League meetings at 5 p.m. Dr. John Rogers will lead the second in a series of discussions on the Book of Genesis Tuesday at 7 p.m. Senior Choir rehearsal is scheduled for Wednesday at 7 p.m.

Bethel Lutheran Church
Morning service is at 8:15 a.m., with a sermon topic of "Implications of Jesus' Cross." Sunday School and Bible classes will meet at 9:30 a.m. A second morning service will be held at 10:45 a.m.

The Lutheran Aggie Walther Club will meet in the Memorial Student Center at 7 p.m. Wednesday. A Lenten Worship service is scheduled for Wednesday at 7:45 p.m. Sermon topic for this service will be "The Trial Before Pilate."

Church of Christ
Bible School is at 9:45 a.m., to be followed by a worship service at 10:45 a.m. Sermon topic will be "Zealous for That Which Is Good." Young People's classes meet at 6:15 p.m. and Aggie Class meets at 6:30 p.m. Sermon topic for the evening service at 7:15 p.m. will be "The Two Great Commandments."

Ladies' Bible Class will meet Tuesday at 9:30 a.m. Prayer Meeting will be held at 7:15 p.m. Wednesday. An Aggie Banquet is slated for 7:30 p.m. Saturday in the Bible Chair Building.

St. Thomas' Chapel
The Central Convocational Acolytes Festival will be held Saturday from 9:30 a.m. until late afternoon. Approximately 50 boys from Episcopal churches in Texas will participate in the annual program.

Holy Communion will be at 8 a.m. Sunday, with Church School scheduled for 9:45 a.m. Morning Prayer and sermon will be held at 9:15 a.m. and 11 a.m. Evening Prayer is at 7 p.m.

Confirmation Class meets Monday at 4 p.m. Inquirer's Class will meet at 8 p.m. Holy Communion and Breakfast are slated for 6:30 a.m. Wednesday. Also scheduled for Wednesday are Parish Lenten Supper at 6 p.m. and Adult Bible Class at 8:30 p.m. The Canterbury Association Convention in Huntsville will begin Friday.

Evening Prayer will be held at 7:10 p.m. Monday, Tuesday, Thursday, Friday and Saturday.

Ohlendorf Receives Barger Award at Annual 'Roundup'

George Ohlendorf, senior rural sociology major from Lockhart, won the J. Wheeler Barger Award at the annual "Spring Roundup and Awards Night" presented by the Department of Agricultural Economics and Rural Sociology.

The Wall Street Journal Award, presented to the outstanding senior in agricultural economics, was won by Ronald E. Buford of Livingston. The prize included a certificate and a year's subscription to the Wall Street Journal.

The Bankers' School Scholarship of \$150 was awarded to Bob Davis, junior agricultural economics major from Houston. The award is presented to the most promising agricultural economics student planning to go into banking upon graduation.

The Rural Sociology Award to the student with the highest academic record went to Charles H. Vincent, senior from Bryan. There was a tie between Leo C.

Rigsby, junior from Canyon and Ben Dickerson from Houston for the Rural Sociology Staff Award to the outstanding student in the department.

Morris Asbill, senior from Quitman, won the Agricultural Economics Award for the Highest Profit in Futures Trading. The Department Head's Award was presented to Bill Truede from Louise. Both awards were pen desk sets.

The General Public

Is Invited To Attend

a

Reception

for the

Hon. and Mrs. Olin E. Teague

at

Triangle Banquet Room

Saturday, March 26, 1960

4:00 P.M. to 6 P.M.

Friends are extended a cordial invitation to meet and visit with Congressman Teague during the above hours.

(Advertisement)

RESERVE DISTRICT NO. 11 STATE NO. 537 REPORT OF CONDITION OF FIRST STATE BANK & TRUST CO. of Bryan, Texas

at the close of business March 15, 1960, a State banking institution organized and operating under the banking laws of this State and a member of the Federal Reserve System. Published in accordance with a call made by the State Banking Authorities and by the Federal Reserve Bank of this District.

ASSETS

Cash, balances with other banks, including reserve balance, and cash items in process of collection	\$1,799,698.50
United States Government obligations, direct and guaranteed	2,449,825.00
Obligations of States and political subdivisions	539,206.97
Corporate stocks (including \$10,500.00 stock of Federal Reserve bank)	10,500.00
Loans and discounts (including \$15,359.30 overdrafts)	3,773,895.79
Bank premises owned \$83,629.82, furniture and fixtures \$27,723.64	111,353.46
Real estate owned other than bank premises	2.00
Other assets	25,543.58
TOTAL ASSETS	\$8,710,025.30

LIABILITIES

Demand deposits of individuals, partnerships, and corporations	5,693,805.63
Time deposits of individuals, partnerships, and corporations	1,110,585.12
Deposits of United States Government (including postal savings)	98,243.83
Deposits of States and political subdivisions	945,980.54
Deposits of banks	164,947.14
Other deposits (certified and officers' checks, etc.)	85,417.77
TOTAL DEPOSITS	\$8,098,980.03
Other liabilities — Reserves	62,589.00
TOTAL LIABILITIES	\$8,161,569.03

CAPITAL ACCOUNTS

Capital*	150,000.00
Surplus	200,000.00
Undivided profits	198,456.27
TOTAL CAPITAL ACCOUNTS	\$ 548,456.27
TOTAL LIABILITIES AND CAPITAL ACCOUNTS	\$8,710,025.30

This bank's capital consists of:
Common stock with total par value of \$150,000.00

MEMORANDA

Assets pledged or assigned to secure liabilities and for other purposes \$2,250,000.00
(a) Loans as shown above are after deduction of reserves of 15,957.61

I, Rondal Brewer, Cashier of the above-named bank, hereby certify, that the above statement is true to the best of my knowledge and belief.
RONDAL BREWER, Cashier

CORRECT—ATTEST:
HENRY B. CLAY
W. S. HIGGS
C. E. JONES

State of Texas,
County of Brazos, ss:
Sworn to and subscribed before me this 19th day of March, 1960.
MAXIE MATHIS,
(Notary Public)

Directors.

(Seal)

Ag Prof, Students Plan Career Talks

Dr. Jarrell D. Gray, professor in the Department of Agricultural Education, along with Arlis Addicks and A. H. Garrett, senior agricultural education majors, are scheduled to speak before San Antonio's East Central High School's career day on March 30. Gray will speak on "Your Future Is What You Make It," pointing out in particular the kind of life the student can expect to find in the future.

Following his address, the high school students will attend group discussions relating to various occupational fields, Gray said. Addicks, heading one discussion group, will discuss "Careers in Agriculture," while Garrett will explain to his group the "Student Life at Texas A&M and the Importance of Getting a College Education."

The Olympia

TYPEWRITERS

Guaranteed As Long As You Are At A&M

OTIS McDONALD'S BRYAN BUSINESS MACHINES

COURT'S

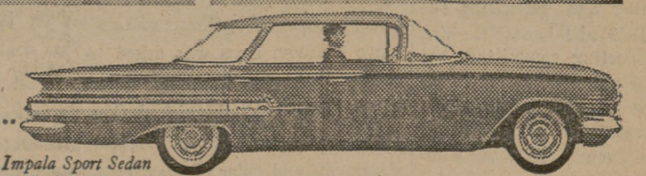
SHOES

SHOE REPAIR

North Gate

See The Bunk Shere Chevy Show in color Sundays, NBC-TV—the Pat Boone Chevy Showroom weekly, ABC-TV.

Air Conditioning—temperatures made to order—for all-weather comfort. Get a demonstration!



Drive it—it's fun-tastic! See your local authorized Chevrolet dealer for economical transportation