

MORE variety in your menu...



Folgers	<b>COFFEE</b>	With \$2.50 Dollar Purchase or More	<b>49c</b>
Folgers Instant	<b>COFFEE</b>	10-Oz. Size	<b>\$1.39</b>
Gladiola	<b>FLOUR</b>	5 Lb. Bag	<b>29c</b>
Gladiola	<b>BISCUITS</b>	Limit 6	<b>5c</b>
Mayfield's Grade "A" Medium	<b>EGGS</b>	3 Doz.	<b>\$1.00</b>
Golden Brown Breaded	<b>SHRIMP</b>	10-Oz. Pkg.	<b>35c</b>
Hills Dale Sliced	<b>PINEAPPLE</b>	Flat Cans	<b>10c</b>
Gerber's Strained Reg.	<b>BABY FOOD</b>	12 Reg. Cans	<b>99c</b>
Carnation Cottage Cheese		Lb. Ctn.	<b>25c</b>
Armour's Vegetole Shortening		3 Lb. Ctn.	<b>49c</b>
Banner Oleo		3 Lbs.	<b>40c</b>
Southern Sun Orange Juice		6-6-Oz. Cans	<b>99c</b>
Banquet Fruit Pies (Apple, Peach, Cherry)		Lg. 8-In.	<b>29c</b>
Rosedale Bartlett Pears		5-303 Cans	<b>99c</b>
Hi-C Orange Drink		4-46-Oz. Cans	<b>99c</b>
Rosedale English Peas		2-303 Cans	<b>25c</b>
Uncle Williams Pork and Beans		3-300 Cans	<b>25c</b>
Rosedale Cream Style Corn		2-303 Cans	<b>25c</b>
Bits of Sea Tuna		5 Flat Cans	<b>99c</b>
Scott Paper Towels		2 Reg. Rolls	<b>35c</b>

Armour Star Fancy	<b>FRYERS</b>	Whole Lb.	<b>28c</b>
Armour's Star Hams		Lb.	<b>45c</b>
Shank Ends		Lb.	<b>39c</b>
Baby Beef Round Steak		Lb.	<b>79c</b>
Baby Beef Rump or Pikes Peak Roast		Lb.	<b>79c</b>
Rath Pure Pork Sausage		3 Lbs.	<b>\$1.00</b>
Hormel All Meat Franks		2 Lbs.	<b>89c</b>
Hormel Dairy Sliced Bacon		2 Lbs.	<b>89c</b>
Range Brand Thick Sliced Bacon		2 Lbs.	<b>69c</b>
Armour's Matchless Bacon		3 Lbs.	<b>\$1.00</b>

**ARMOUR'S GIANT HOOP CHEESE**  
 TRY YOUR LUCK — GUESS THE WEIGHT GET YOUR CHEESE FREE—IF YOU MISS—YOU PAY ONLY **69c**

<b>PRODUCE</b>	Red <b>POTATOES</b>	10 Lb. Bag	<b>28c</b>
	King of Salad <b>AVOCADOS</b>	ea.	<b>5c</b>
	Fresh Jumbo <b>LETTUCE</b>	hd.	<b>10c</b>

**MILLER'S SUPER MARKET**  
 3800 TEXAS AVENUE VI 6-6613

### 14 Students Plan One-Day River Tour

Fourteen wildlife management students, under the direction of Dr. R. J. Baldauf, assistant professor of Wildlife Management, are planning a one-day survey tour of the lower parts of the Trinity River and its estuary.

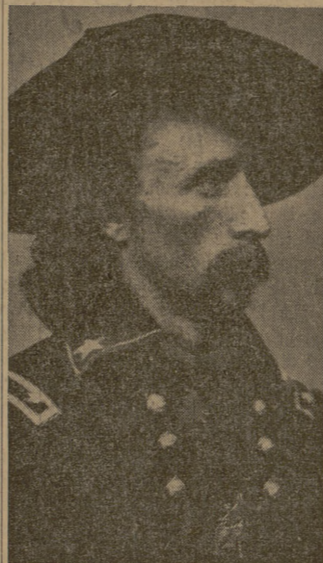
The trip, one of a series to be held in conjunction with the study of fresh water ichthyology, is designed to take a survey of the fishes and other types of aquatic life in the river, Baldauf said.

Working in co-operation with the local game wardens, the class plans to collect fish by seining, take samples of plankton and make representative tests of the river's temperature, salinity, dissolved oxygen content, and pH.

Similarly, the group hopes to catch some of the fish that use the river's estuary as a breeding place, and by comparison with catches of different tours determine growth rates and reproductive methods.

The first of the tours will be held on a Saturday, and will be made as soon as the weather is favorable, Baldauf stated.

The tour is unique in that the lower part of the Trinity has never been studied extensively for this type of information, he noted.



Gen. G. A. Custer ... part of photo display

### Photographs Go On Display Monday Eve

A display of enlarged photographs made from the original Mathew Brady glass plates will be on display at the meeting of the Memorial Student Center Camera Committee from 7:30 to 10:30 Monday night in the MSC.

The pictures, part of a traveling gallery prepared by the Anso Camera Services Department, include portraits of such famous men as Presidents Abraham Lincoln and U. S. Grant and Gen. George A. Custer and Phil Sheridan.

Also on display will be a rare group of Civil War pictures. These on-the-spot scenes, made by Brady and his associates, provide an intimate view of actual war-time conditions in the trenches, on the battlefields and in the camp.

The display will be open to the public.

### Mothers' Clubs Dedicate Yearbook To MSC Director

The Federation of A&M Mothers' Clubs has dedicated its 1959-60 yearbook to J. Wayne Stark, director of the Memorial Student Center.

Mrs. Ellsworth S. Lorns of San Antonio is president of the Federation.

"The Federation of Texas A&M College Mothers' Clubs proudly dedicates this book to J. Wayne Stark, director, Memorial Student Center," the citation reads, "for his untiring efforts to provide the relaxation of the campus living room, the uplift and inspiration of cultural activities and the leaven of wholesome recreation for our sons."

### Bell To Conduct Workshop in March

Dr. R. R. Bell, associate professor in the Department of Veterinary Parasitology, will conduct an in-service educational workshop March 15 for vocational agricultural teachers.

The workshop will be held at Tivy High School in Kerrville for teachers in Area 7.

Discussion emphasis will be on parasites and parasitic diseases of livestock, their prevention and control.

## Colleges Note Preparation Of High School Students

With college enrollment growing by leaps and bounds every year colleges all over the country are beginning to pay more attention to the jobs high schools are doing to prepare their seniors for college careers, according to the Intercollegiate Press.

### Kent State University

A college freshman's greatest weakness, according to Dr. Edgar L. McCormick, chairman of the freshman English program at Kent State University, is his lack of pre-college writing.

"Studies at Kent indicate that marks drop at least one-half a letter in college and that students earning less than a 'B' in high school English do not have skills needed for success in college English," McCormick said.

A five-man committee at Kent plans and administers the freshman English program. In addition it evaluates and follows up results of a test which entering freshmen must take in vocabulary, reading, and spelling. Reports are sent to high schools whose graduates attain superior ratings on these tests as well as to high schools whose graduates have been assigned to remedial classes, he added.

### Iowa State Teachers College

Iowa State Teachers College is tightening its admission requirements as a result of excess applications. President J. W. Maucker said that students in the upper half of their high school graduating class who appear to meet all other qualifications are usually admitted without question.

"Students near the fiftieth percentile and below may be admitted only if their performance on tests and other evidence, such as personal interviews, indicate they have a reasonable chance of success in college in spite of a relatively poor standing in high school," Maucker said.

Maucker said emphasis is placed on rank in class because evidence indicated that rank in class in the best single index of probable success in college.

"However, the problem of predicting success is so complex that we cannot rely on any single index, so we also use other indications of the students' ability. Our chief concern in admission of students is to make sure the prospective student has a reasonable chance for success in college," said Maucker.

### North Carolina State College

A new School of Physical Sciences and Applied Mathematics which will embrace the present departments of physics, mathematics, chemistry and experimental statistics is to be established at North Carolina State College, according to Dr. John T. Caldwell, chancellor of the college.

The new school will be responsible for both instruction and re-

search in these four major scientific fields, Caldwell stated.

"Science has been remarking the world at a constantly accelerating pace. This new science has not only had an impact on man's technology; it has influenced his total way of life, and particularly his mode of thinking. This is particularly true of colleges dedicated to bringing the impacts of science to the daily lives of all people," said Caldwell.

### Barnard College

Two elected undergraduate groups as well as the trustees of Barnard College have adopted a resolution opposing the National Defense Education Act with its loyalty and disclaimer oaths.

The resolution, according to President Millicent O. McIntosh, reflects her own and the faculty's opinion that the affidavit is "designed to control students' beliefs at a time in their lives when they should be encouraged to widen their intellectual horizons."

## Congress Duties Undergo Changes

WASHINGTON, Mar. 3, (AP)—At one time a congressman's principal and almost exclusive function was to pass laws. Rep. Joe Kilgore (D) of McAllen, says things have changed.

"My responsibility to the people I represent does NOT end with the performance of legislative duties," Kilgore said in a report to constituents.

"enormous in size . . ." "Our federal government has become enormous in size and vastly complicated. Too often the individual feels lost and hopeless in his necessary contacts with this huge governmental machine.

"At times a congressman can help to cut the red tape and expedite action on a matter involving an individual citizen and one of the numerous government bureaus or agencies. When I can properly do so, I never hesitate.

"This does NOT involve exerting pressure. It is a matter of 'knowing the ropes'—an awareness of shortcuts that will help to keep one person's problems from being lost in a bureaucratic maze."

"harder to study . . ." Years ago on the House Floor, the late Rep. Luther Patrick of Alabama said: "A Congressman has become an expanded messenger boy, an employment agency, a dog for the under dog, a sympathizer with the upper dog, a corner-stone layer, but it is getting harder every day to properly study legislation—the very business we are primarily here to discharge."

Kilgore, in similar remarks, said: "The people of the 15th District have a right to expect that I, as their Representative in Congress, will study proposed legislation, attend carefully to debate in the House, and be present and

vote when the time comes. That is what I try to do. This is a duty both to my constituents and to the people of the United States as a whole."

Vote as they feel . . . One old timer in the Texas delegation, asked whether a congressman should vote the way he personally feels on an issue even though it may be entirely opposite the known views of the vast majority of his constituents, said:

"Of course, a congressman has the advantage of knowing, or at least being aware of facts in many instances which are NOT generally known to his constituents. He should then vote as he thinks will be in their best interest."

### Lifting Laws

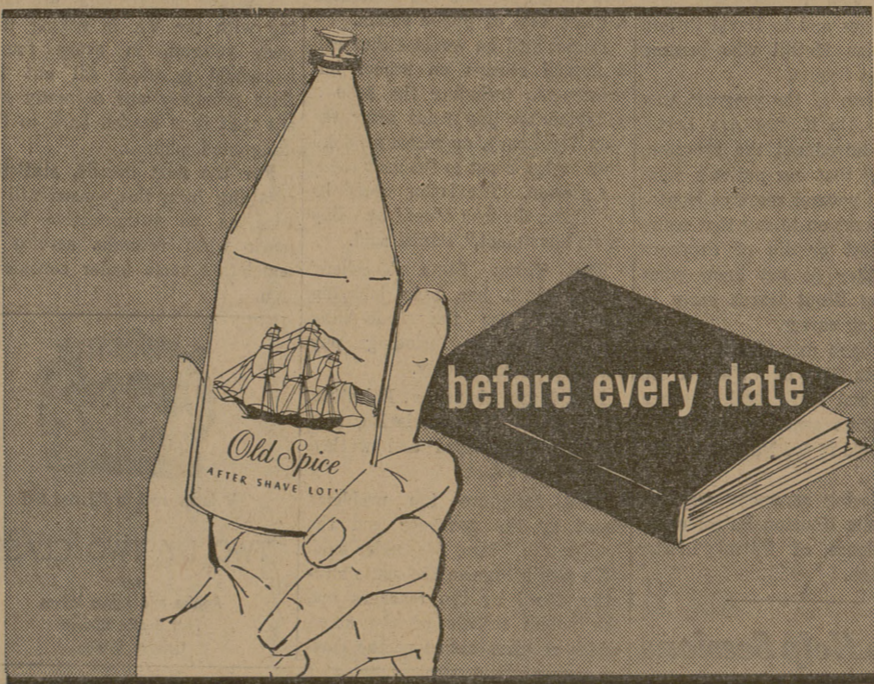
He then cited his vote and that of many others of the Texas delegation in favor of lifting certain neutrality laws prior to World War II, when public sentiment in Texas was against such a vote, because of a more acute awareness here of Hitler's growing menace.

## System Offices To Recognize 'Day of Prayer'

The College and System offices housed on the A&M campus will join with the College Station Council of Church Women in recognizing Friday, March 4, as "World Day of Prayer," President Earl Rudder has announced.

"It is requested that we halt our activities for one minute of silent prayer as we unite with the people throughout this country and around the world in observing World Day of Prayer," Rudder said.

To signal this occasion and also as a reminder, the college whistle will blow at 10 a.m. and again at one minute past 10.



after every shave

Splash on Old Spice After Shave Lotion. Feel your face wake up and live! So good for your skin . . . so good for your ego. Brisk as an ocean breeze, Old Spice makes you feel like a new man. Confident. Assured. Relaxed. You know you're at your best when you top off your shave with Old Spice! 100 plus

**Old Spice**  
 AFTER SHAVE LOTION  
 by SHULTON



Have Your **HOOVER CLEANER** Serviced by Hoover-Trained Experts

Special low-cost **HOOVER 7-POINT SERVICE:**

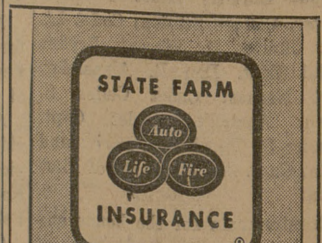
- MOTOR cleaned, lubricated, new carbon brushes.
- AGITATOR or BRUSH ROLL cleaned, lubricated.
- BELT replaced.
- BAG completely renovated.
- CORD, SWITCH, WIRING checked, tested.
- APPEARANCE improved.
- CLEANING EFFICIENCY restored.

WORK GUARANTEED ONE FULL YEAR

fast 48-hour service free pickup and delivery

PHONE

**KRAFT Furniture Co.**



FOR INSURANCE CALL  
 U. M. ALEXANDER, JR., '40  
 215 S. Main  
 Phone TA 3-3616  
 State Farm Mutual Automobile Insurance Co.  
 State Farm Life Insurance Co.  
 State Farm Fire and Casualty Co.  
 HOME OFFICE—BLOOMINGTON, ILLINOIS