

Sigma Gamma Tau Holds Initiation For New Members

The A&M Chapter of Sigma Gamma Tau held its fall initiation ceremony last Thursday night at 7:0 in the Conference Room of the new Engineering Building.

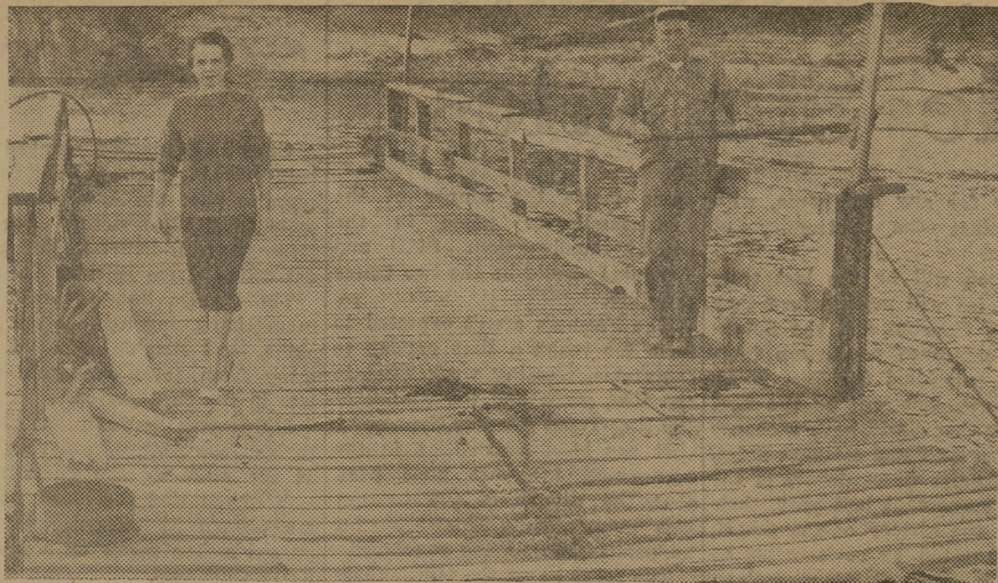
New members initiated into the society were: Marion C. Becker, David R. Frank, Frank H. Frey, James R. Garey, Joe K. Heilhecker, William E. Houchin Jr., David K. Keeler, Larry K. Leighton, Raymond R. Maestri, Louis G. Marlow, Edwin L. M. Mauzy, Ned H. Sandin and James H. Warren.

Sigma Gamma Tau is the national aeronautical engineering society.

Secretaries Slate Christmas Social At Local Ag Club

The Bryan-College Station Chapter of the National Secretaries Assn. will hold a Christmas Party instead of a dinner meeting during the month of December.

Mrs. Beth Burnes, chairman of the social committee, asks that members notify her as soon as possible how many guests they will be bringing.



Ferry Replaced

Mrs. A. C. Singletary of Kirbyville, the former Miss Lillian Sheffield, great granddaughter of Thomas Jefferson Sheffield, stands on ferry he put into operation on the Neches River, 12 miles west of Kirbyville, more than 100 years ago. Fred Jenkins is shown operating the ferry. The ferry has been replaced by a bridge. (AP Wire-photo)

Snow Aiming at Texas

By The Associated Press

The U. S. Weather Bureau renewed heavy snow warnings for large sections of West Texas and local blizzard conditions for the Panhandle and upper South Plains Tuesday.

Snow, freezing rain and thunder-

storms that started Monday night continued into the pre-dawn hours of Tuesday morning.

The Texas Highway Patrol and safety authorities repeated warnings to motorists to stay off ice-coated, snowed-in highways.

Four inches of snow were expected for great areas of the Panhandle, upper South Plains and the upper Pecos Valley Monday. Snowplows worked through the night.

Heavy drifts with high winds buffeted the Panhandle-Plains country. Many roads were closed, including four major arteries. The weather bureau said there was a possibility of the heavy snow and blizzard conditions spreading into North Central Texas.

Shortly before dawn, the Pacific cold front that caused the turbulence and cold was along a line from about 50 miles west of Wichita Falls, just east of San Antonio, to about 50 miles east of Laredo and southward into Mexico.

Thunderstorms crackled over Central Texas for a hundred miles east of the front and 50 miles west of the front. Precipitation was general over the remainder of the state with light rain or drizzle and a few scattered thunderstorms over East Texas and Southwest Texas. Light snow, sleet and freezing rain continued over the Panhandle.

The front apparently dropped temperatures about 20 degrees. El Paso, far to the rear, had 30 degrees at 4:30 a.m. Dallas, in front of the movement, had 50 degrees at the same time. It was 32 in Amarillo where freezing rain was falling and 31 at Dalhart where it was sleeting.

Light to heavy thunderstorms drenched the Dallas-Fort Worth area soon after midnight and continued through the wee hours of Tuesday morning.

By early Monday night, two inches of snow had covered the northern sections of the Texas Panhandle. Snowplows were in operation and biting, cold winds drifted the snow with 45-mile-per-hour gusts.

Westward, just across the New Mexico line, Portales had 6 inches of snow and a section of transcontinental U. S. 66—the old "Grapes of Wrath" route to California—was reported blocked.

Seal Sale Drive Encourage Returns

A&M students will soon be leaving the campus as the Christmas Holidays begin. However, many Christmas Seal letters sent out by the Brazos County Tuberculosis Assn. have not been answered, according to Mrs. I. W. Rupel, Seal Sale chairman.

"We have already collected \$4,247.46," Mrs. Rupel said, "and I am pleased with the returns from the students thus far, but I am hoping those who haven't sent in their dollar will do so before they leave for home."

The following letter addressed to A&M students was received by The-Battalion:

Dear Students of A&M College: Before you leave for the Holidays I want to thank each of you who has sent in a contribution to the Christmas Seal Sale. Many of you have sent in more than the \$1.00 asked. Members of the Board of Directors of the Brazos County TB Association and I are pleased with your generous response.

To those of you who have not sent in a donation—you will before you leave the campus, won't you?

We believe that every serious thinking Aggie realizes the importance of the work of the TB Association to the health of the College Campus and will do his part in helping protect himself and other Aggies from tuberculosis.

Merry Christmas and Happy New Year
Mrs. I. W. Rupel, chairman Seal Sale
Brazos County Tuberculosis Association

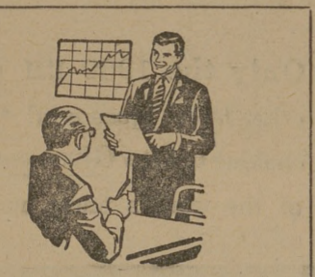
Fellowship Sets Caroling Session

Members of the Citizens Fellowship, a local organization open to people of all races who are interested in furthering brotherhood in this community, will go Christmas Caroling Thursday night.

Rev. L. W. Flowers and Winton Covey, co-chairmen of the group, said the group will meet in the Adult Bible Class room of the A&M Presbyterian Church at 7 p.m. The carolers will sing at hospitals and homes and later return to the church for refreshments and a short business meeting. A nursery will be provided for children too young to go caroling.

International students are invited to attend this meeting.

Diamonds, aside from being a decorative jewels, also cut steel, shape bowling balls and polish dental fillings



Be well groomed for success

That "like new" look we give your clothes is sure to make the right impressions whether you're on the job or on the town.

CAMPUS CLEANERS



We gratefully acknowledge your patronage in the past and hope that all joy possible be yours on this great occasion.

SINCLAIR Service Station
North Gate

15 Atlantic Ministers Meet To Repair Western Unity

PARIS (AP)—Foreign ministers of the 15 Atlantic Allies met today in a bright new headquarters to seek ways of repairing the fraying fabric of Western unity.

It was plain this time the problems, both diplomatic and military, were many and couldn't be ducked. Chief among them was the openly expressed feeling of the United States and other members of the North Atlantic Treaty Organization that France is not doing its share.

After 10 years the alliance seemed to be in for heavy rethinking. Secretary-General Paul-Henri Spaak told newsmen he was "convinced the alliance cannot live unless it adapts itself."

The conference comes at a time when the tide of world diplomacy is flowing fast.

On Saturday French President Charles de Gaulle will be host to President Eisenhower, British Prime Minister Harold Macmillan and West German chancellor Conrad Adenauer.

These top Western leaders will sit down to prepare for the expected Eisenhower - Macmillan - De Gaulle meeting next spring with Soviet Premier Nikita Krushchev.

The date, place and agenda of the East-West summit will be discussed by all the NATO powers. The date to be proposed to Krushchev is expected to fall sometime between April 15 and May 31. Geneva is regarded as the likely place, although the French would prefer Paris.

The agenda is something else again. The big Western leaders will have to sort that out, with Eisenhower possibly serving as the man to bridge the conflicting views.

Of even more immediate importance, the lone hand de Gaulle is playing to revive the glory of France is causing strains in the Western defense system.

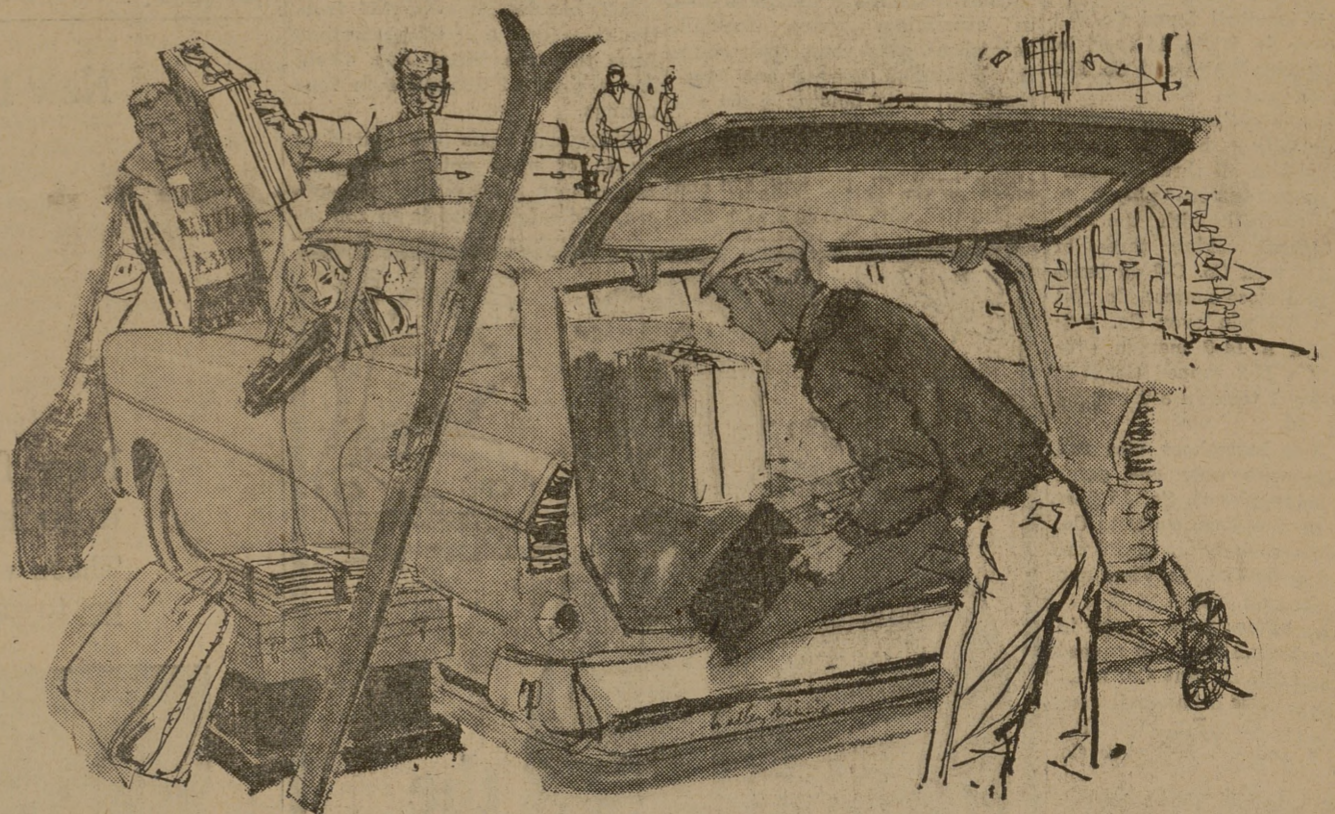
This was pinpointed last week when Gen. Nathan Twining, chair-

man of the U. S. Joint Chiefs of Staff, charged America's partners with not assuming their fair share of the defense effort. He pointed Christian A. Herter that Twining's a finger particularly at France. remarks were of "an excessive and France was stung. At a private dramatic character."

to our Many Friends
The Season's Greetings
WILSON CO.
East Gate

GREETINGS
TO OUR FRIENDS
AGGIELAND BARBER SHOP
North Gate

Best Wishes for a
Happy Holiday Season
Caldwell's Jewelry Store
112 N. Main Bryan TA 2-2435



while you're home on vacation,
invest a few minutes in your future...

SEE IBM!

If you're a Senior or Graduate Student, make this a productive holiday as well as a happy one. Take time to investigate career opportunities at IBM. You'll receive a warm welcome at any of nearly 200 branch offices. Just call the manager and ask for an appointment. He is expecting you. He will tell you what sort of company we are... what the people are like... what we do... how rapidly the data processing industry has been expanding. And he will tell you what we offer qualified college graduates in career training, job satisfactions, prestige, earnings, and opportunities for promotion.

We need men and women for a variety of careers in direct and indirect sales, applied science, business administration, programming, manufacturing, engineering research and product development. We want men and women with imagination, ambition, and unusual ability.

Please call me for the location of the office nearest your home:

Mr. J. E. Russell, Branch Manager
International Business Machines Corporation
2601 So. Main Street, Houston 2, Texas
Telephone: Capital 3-4721

If circumstances prevent you from accepting this invitation, please ask me or your College Placement Officer for the date of the next IBM interview on campus.



have a merry Christmas and a happy new year!

IF YOU ARE AS LATE GETTING YOUR CHRISTMAS GIFTS AS WE WERE GETTING OUR MERCHANDISE LET'S GET TOGETHER.

IF THERE IS A MAN ON YOUR LIST YOU CAN'T FAIL TO FIND SOMETHING SUITABLE IN THE LARGE STOCK OF SHIRTS, SWEATERS AND JACKETS WE HAVE JUST RECEIVED.

GIVE US A CHANCE TO MAKE YOUR CHRISTMAS SHOPPING A PLEASURE INSTEAD OF A CHORE.

FREE GIFT WRAPPING

Loupot's