

Graduate Lecture Docketed Thursday

"Some Observations in Pathology in Man and Animal" will be discussed here Thursday at 8 p.m. in the lecture room of the Biological Sciences Building.

The graduate lecture will be given by Dr. R. H. Rigdon, professor of pathology in University of Texas at Medical Branch in Galveston.

Dr. Rigdon will discuss the pathology of various diseases as involved in humans and in experimental animals. His talk will illustrate some of the animal experiments and some of the problems relating to human beings.

He received his B.S. from Emory University in 1929 and his M.D. in 1931. He served as intern (1931-32), assistant resident (1932-34) and resident (1934-35) at the Duke

University Hospital.

From 1935-39, he taught at Vanderbilt University, and was associate professor of pathology at the University of Tennessee Medical College from 1939-43. In 1944, he became professor of pathology at the University of Arkansas School of Medicine where he remained until becoming associated with the University of Texas Medical Branch, Galveston.

In 1947, Dr. Rigdon became director of the Laboratory of Experimental Medicine and since 1948 has served as professor of pathology at the University of Texas Medical Branch in Galveston.

He is a member of the American Medical Assn., State Medical Assn. of Texas, Texas Society of Pathologists and several other nationally recognized professional and scientific organizations.

His talk is sponsored by the National Institute of Health in cooperation with the University of Texas Medical Branch.

Columbia center Bob McCool rates as the most versatile athlete in the Ivy League. He has won letters in football, rowing, ice hockey, track and baseball at Boston Latin.

AGGIES

We Will Buy For CASH All Second Semester Books

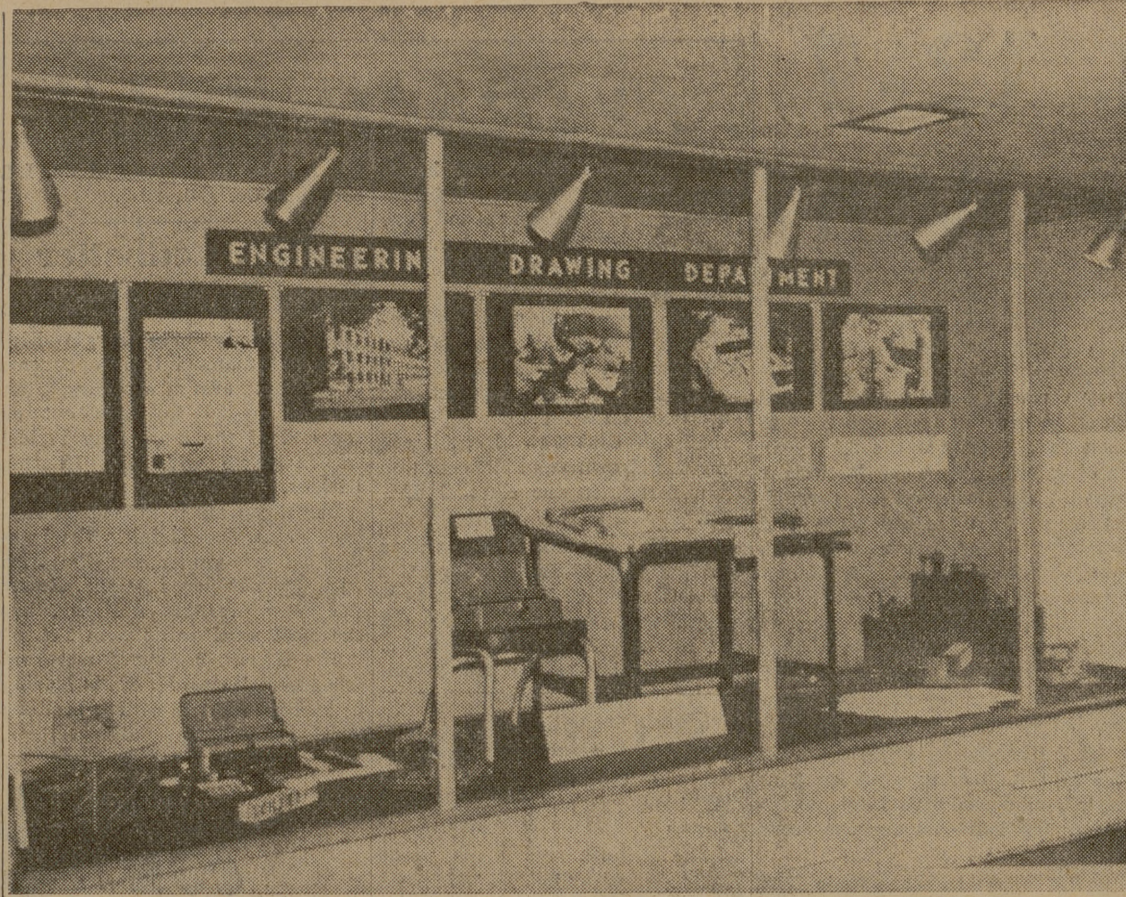
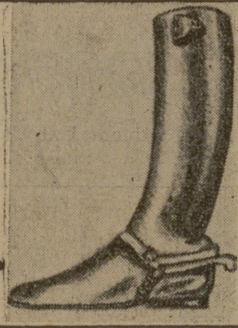
Loupot's

"Bilrite" Boots and Shoes

Made By Economy Shoe Repair and Boot Co.

Large Stock of Handmade Boots Convenient Budget & Lay-Plan \$55.00 a pair Made To Order

Main Office: 509 W. Commerce, San Antonio CA 3-0047



Engineering Drawing Display

The Department of Engineering Drawing had set this display in the Memorial Student Center to advertise their open house from 2-5 p. m. tomorrow on the third floor of the Engineering Building. It shows the equipment used by the department and pictures of classroom scenes.

Over 7,000 Visit A&M Since June

Some 7,853 visitors were on the A&M campus for the months of June, July, August, September and October, P. L. Downs Jr., official greeter of the college, announced today.

From June 1, 1949 to June 1, 1959, there were 592,276 visitors on the campus, Downs reports and the total for 10 years and the past 5 months is 600,129.

The visitors attended short courses, conferences, class reunions and other scheduled meetings.

Engineering Dean Delivers Opening Address to Public Utility Short Course

Fred Benson, dean of engineering, gave the welcome address at the public utility short course for electrical metermen yesterday.

The course, conducted by the college, is being held in the Memorial Student Center with top-ranking men in the utility field throughout the nation in attendance.

At the opening session yesterday R. H. Mighell, General Electric Co., discussed the "Principles of Electricity Film;" Professor H. C. Dillingham of the Department of

Electrical Engineering talked on "Metering Arithmetic" and "The Magnetic Circuit; Reactions Between Electric and Magnetic Circuits" and "Fundamentals of Ohm's Law, Voltage, Current, Power and Energy."

Joint Conference Set for December

Directors of the Texas and Southwestern Cattle Raisers Assn. and the Texas Beef Council will hold a joint conference Dec. 4-5 in the Memorial Student Center.

The program of discussion will include everything from the use of radioactive cobalt as a cattle cancer eye treatment to watching veterinarians operate on an animal via closed circuit television.

Most of the session will be held in the Memorial Student Center. The first day's program starts at 8 a.m., with Dr. R. E. Patterson, vice chancellor for agriculture of

the A&M College System, presiding.

Dr. R. D. Lewis, director of the Texas Agricultural Experiment Station, will discuss research programs now under way, and Dr. B. J. Camp, assistant professor in the Department of Biochemistry and nutrition, will talk on toxic plants.

Forage yields and grazing systems will be explained by Agronomist M. E. Riewe of the Angleton Experiment Station, while M. A. Price, associate professor of entomology, will outline safe control of external parasites of cattle.

That afternoon, Dr. R. D. Turk, head of the Department of Veterinary Parasitology, will preside at a program in the veterinary hospital and discuss large animal disease research.

Conference members also will hear Dr. W. C. Banks, diagnostic laboratory and radiological section chief, explain cobalt 60 therapy for cancer eye treatment. An actual operation on an animal, to be viewed on closed circuit television, will be conducted by Dr. W. M. Romane, head of the large animal clinic.

Other activities the first day include a tour of animal husbandry facilities, the Beef Cattle Research Center and a barbecue on the Harry Moore Plantation near Millican.

Norman Moser, president of the cattle raisers association, will preside at the second day's program. Scheduled are committee meetings, a welcome address by A&M President Earl Rudder, a business session and the beef council's sixth annual beef dinner at noon in the Memorial Student Center.

New Access Road Opened at Junction

The newly completed access road and bridge to the A&M Adjunct at Junction, Tex., was opened officially during ribbon-cutting ceremonies at 10:30 this morning.

Among those in attendance from throughout the state included President Earl Rudder, A&M; Hal Woodward of Coleman, member of the Texas Highway Commission, who delivered the principal address; Callan Graham and Luke Hagood of the Texas Good Roads Assn.; Texas Highway Department engineers, state and U. S. congressmen, Kimble county officials and many others.

GIVES OBJECT LESSON

NORMAN, Okla. (AP)—Jay Belford, 17-year-old swimming instructor, was explaining how not to dive in shallow water. He demonstrated and was taken to a hospital for stitches.

BATTALION CLASSIFIED

FOR RENT

Bedroom, will accommodate two people. Near the campus, VI 6-7576. 2514

Large bedroom, private bath, single beds, share with graduate student. 500 Main St., College Station. VI 6-6544. 241fn

Large modern duplex. Recently painted. 706 A & B Montclair. VI 6-8265. 2412

Two furnished apartments just off A&M Campus, South Gate, nice, very large rooms. Four rooms, bath, and garage \$47.50. Three rooms and bath \$40.00. See at 603 Montclair. VI 6-6026. 211fn

Unusually nice three bedroom house. Large rooms, two porches, garage. \$70.00 See at 601 Montclair in College Park or phone VI 6-5349. 211fn

Save on transportation by moving close to A&M Campus. Nice two bedroom duplex apartment just north of Campus with fenced-in back yard. TA 3-3692 or VI 6-5442. 211fn

Unfurnished two bedroom duplex panel ray heat large back yard washing machine connections rent open 811 Montclair. Apply 809 Montclair. 181fn

Near east gate in College Hills very nicely furnished one bedroom apartment, antique satin draperies, new stove and refrigerator. Adults only. \$30.00 without utilities. VI 6-5031 after 6:00 p. m. 91fn

Apartment two blocks from north gate. Nicely furnished, freezing unit in refrigerator. Several walk in closets. Clean as a pin. 401 Cross St., VI 6-5064. 51fn

Brick duplex apartment. Unfurnished one bedroom. Central heat, tiled bath, carpet, storeroom. North Gate area. Call VI 6-6468. 131fn

Sewing machines. Pruitt Fabric Shop. 921fn

Unfurnished apartment across street from South Side Food Market. 305 Montclair. Stove furnished. Rent \$27.50. Phone VI 6-6544 or VI 6-6630. 1341fn

Two bedroom, unfurnished, brick apartment. 402B Second St. Twin Oaks Apartments. VI 6-6334. 1151fn

Roomy 2 bedroom apartment. Near Crockett School. Available immediately. Phone VI 6-6660 or VI 6-4916. 1371fn

WORK WANTED

Want babysitting at night. TA 3-2516 after 8:00 p. m. 2514

ATTENTION WORKING MOTHERS: All Day Nursery experienced child care supervised play. \$25.00 per month. VI 6-6146. 1361fn

Typing wanted, neat, accurate. Reasonable rates. Mrs. Carlson VI 6-7986. 1221fn

Your reports will be typed quickly and accurately on electric typewriters at the RI-City Secretarial Service, 8408A Texas Avenue. Phone VI 6-8788. 711fn

DAVID E. ROBERTS Monahans, Texas Will be given a free barbecue plate at the BARBECUE PIT Ridgcrest Shopping Center Offer good until 8:30 p. m. Nov 4

RADIO-PHONO-TV Service By SOSOLIK TUBES TESTED FREE BY EXPERTS 718 S. Main TA 2-1941 Bryan

ENGINEERING AND ARCHITECTURAL SUPPLIES BLUE LINE PRINTS BLUE PRINTS PHOTOSTATS SCOTATES INDUSTRIES 603 Old Sulphur Springs Road BRYAN, TEXAS

Hotard's Cafeteria Where the Art of Cooking Is Not Lost

DR. M. W. DEASON OPTOMETRIST Contact Lenses Evenings by Appointment TA 2-3530

OFFICIAL NOTICES

Official notices must be brought, mailed or telephoned so as to arrive in the Office of Student Publications (Ground Floor EMCA, VI 6-6415, hours 8-12, 1-5, daily Monday through Friday) at or before the deadline of 1 p.m. of the day preceding publication — Director of Student Publications.

Any student who normally expects to complete all of the requirements for a degree at the end of the current semester should call by the Registrar's Office NOW and make formal application for a degree. October 31 is the deadline for filing an application for a degree to be conferred at the end of the current semester. This deadline applies to both graduate and undergraduate students. H. L. Henton, Director of Admissions and Registrar

SPECIAL NOTICE

SISTER GLORIA Famous Reader & Adviser Bring your problems to me—We will help you solve them. I guarantee success where all other readers fail. Separate rooms for white & colored. No charge for reading — only donations. Open from 7 A.M. to 10 P.M. 2103 Hwy. 21 West. 24117

Willis flying services. Flight instruction. Charter rental rides. VI 6-6095. 2218

TOM THUMB NURSERY SCHOOL Ages 2½-5 years. Limited number. Story telling, Singing, Drawing, Playing. Operated by Shirley J. Waggoner, former first grade teacher. Close to College. VI 6-6608. Reference when requested. Only one all day opening remains. 1161fn

Cade's Auto Repair Department Trained Mechanics—Work Guaranteed Liberal Terms. 1309 Texas Avenue 1831fn

Electrolux Sales and Service. G. C. Williams. TA 3-6600. 901fn

Good Aggie wants to buy used boy's bicycle. Must be reasonable. Contact Loupot's 181fn

DAY NURSERY by the week, day or hour. Call Mrs. Gregory, 502 Boyett, VI 6-4005. 1201fn

Put your reservations in now for banquets. Accommodate up to 250 people. TA 2-1352. Triangle Restaurant. 121fn

Day nursery, experienced child care, noon meal, pick up and delivery, fenced yard. VI 6-6294. 1261fn

Dear John: I'm sending your saddle home. I have heard that a married woman can expect to be a widow for about 7 years. I might reconsider your proposition if you will talk with Eugene Rush about my adequate life insurance program . . . Mary. 11fn

Early Bird Shoppe, Inc. Curtains — Fabrics — Toys Ridgcrest Village

WHITLEY'S PEST CONTROL GUARANTEED SERVICE TA 2-4285 3706 So. College Ave.

NEW TYPEWRITER CO. ADDING MACHINES CALCULATORS ELECTRIC & MANUALS DISTRIBUTOR FOR ROYAL & VICTOR 909 S. MAIN BRYAN, TEX. TA 2-6000

Engineers!

Scientists!

WE'RE LOOKING FORWARD TO MEETING YOU



Last year we had the pleasure of meeting many engineering and science seniors during our visit to the campus. As a result of our discussions, a gratifying number chose to join our company.

We'll be back on the dates below, and this notice is your invitation to come in and see us.

If you're interested in joining a company that's a leader in fields-with-a-future, you'll be interested in the advantages Boeing can offer you. Boeing is in volume production of Bomarc, the nation's longest range defense missile, and is a prime contractor on Minuteman, an advanced solid-propellant intercontinental ballistic missile system.

Boeing is also the nation's foremost designer and builder of multi-jet aircraft. Production includes eight-jet B-52G missile bombers, KC-135 jet transport-tankers and the famous Boeing 707 jet airliner.

Research projects at Boeing include celestial mechanics, solid state physics, nuclear and plasma physics, advanced propulsion systems, and space flight.

Expanding programs offer exceptional career opportunities to holders of B.S., M.S. and Ph.D. degrees in aeronautical, mechanical, civil (structures), electrical-electronic and welding engineering, and in engineering mechanics, engineering physics as well as in mathematics and physics. At Boeing you'll work in a small group where individual ability and initiative get plenty of visibility. You'll enjoy many other advantages, including an opportunity to take graduate studies at company expense to help you get ahead faster.

We hope you'll arrange an interview through your Placement Office. We're looking forward to meeting you.

THURSDAY and FRIDAY NOVEMBER 5 and 6

BOEING

Seattle • Wichita • Cape Canaveral, Florida