

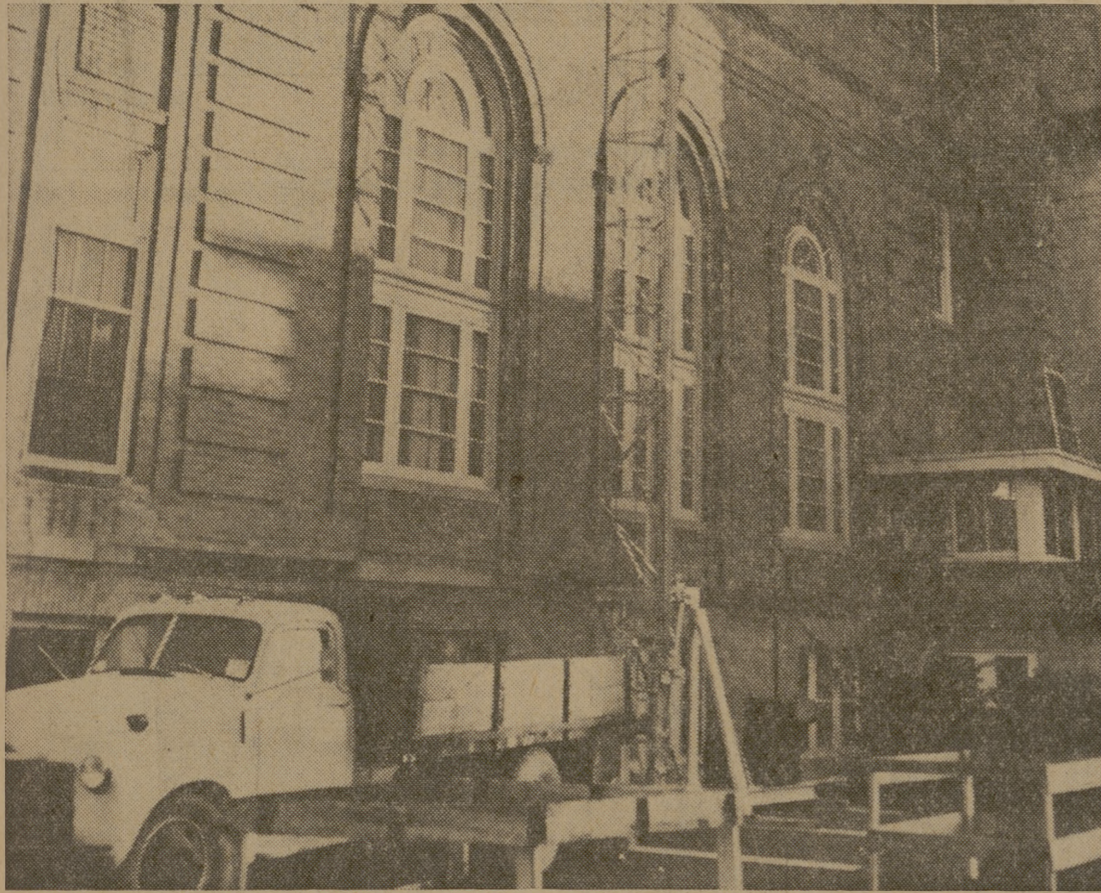


THE BATTALION

Volume 59

COLLEGE STATION, TEXAS THURSDAY, OCTOBER 8, 1959

Number 11



YMCA Remodeling

Remodeling of the third floor of YMCA the building which will eventually house moved into initial stages yesterday with the placement office, the short course of the removing of furniture. Air conditioning will also be installed on the third floor of the building which will eventually house the placement office, the short course of the removing of furniture, the development fund office and the college information office.

MSC Revisions Partially Account for Fee Increase

By JACK HARTSFIELD
Battalion Staff Writer

(Editor's Note: This is the final in a series of articles by the Battalion explaining what the \$17.35 compulsory student services fee is being used for. Included in the fee were funds to the College Hospital, the Memorial Student Center and the Intramurals program.) Consolidation of the former Department of Student Activities with the student program services in the Memorial Student Center and an important and vital MSC budget revisions brought on by policy changes in the Texas Legislature partially accounts for the three-way increase in student services to \$17.35 this year.

Last year, the MSC received \$2 per student from the Memorial Student Center fee paid, as established by vote of the A&M student body and the Texas Legislature four years ago. Due to the revisions carried out this summer, registering students last month paid a \$4 increase specifically designated to the Center. This amount was included in the total student services fee.

The natural question for students who noticed the increase would be "Why was the increase necessary and what is it being used for?"

The MSC is divided into four correlated programs. These include the MSC student programs, and other campus student activities, the facilities department and the business department. Only the first three of these were effected by the budget revision.

Breaking down approximate amounts per student received by the Center show that the campus student activities and recreation groups received \$2.75; the MSC student program received \$2; and the facilities department received \$1.25.

The Texas Legislature's state appropriations previously paid for the support of student activities and recreation. However, this year the state appropriations for this purpose were revised. The rule now stands that the Legislature will not support this program on the basis that it is not a responsibility of the State to appropriate funds for "non-educational" programs.

Since this one program requires funds totaling approximately \$36,700 per year to continue active, the \$2.75 out of the student services fee was set for the support of campus student activities and recreation.

The MSC student program also depends on funds from the stu-

dent services fee. This program includes all student committees responsible to the MSC Council and Directorate. Funds from the increased fee will give \$30,000 per year to maintain support of this program.

Receiving the remaining \$1.25 of the student services fee is the physical facilities department. This money will be used for day-to-day operating expenses of the Center and to replenish existing physical facilities of the MSC, the Music Hall and Guion Hall.

Looking at the overall picture, the MSC calls for approximately \$122,000 for maintaining physical facilities. Of this amount, the state directly appropriates \$41,000 to the Center; \$10,000 each year comes in from MSC rental charges of rooms, banquets and other similar activities; plus the \$20,000 from the student services fee.

This leaves an amount of \$51,000 which must be transferred from businesses of the Center.

The 1959-60 fiscal year calls for an estimated \$55,000 cleared by the business operations to meet the \$122,000 amount needed, leaving a cushion of only \$4,000.

The two-million dollar Memorial Student Center, acclaimed one of the most beautiful Student Unions of the 200 such organizations in the world, is a BIG BUSINESS!

Kyle Seating Sectors Same as Last Year

Mrs. Terry Takes Absence Of MSC Post

Mrs. Emalita Newton Terry, Art advisor and instructor of the Memorial Student Center, is taking a year's leave of absence, according to Wayne Stark, MSC Directorate.

Mrs. Terry came to A&M in 1948 when her husband, Ralph Terry, a World War II veteran, decided to return to school for a master's degree in Rural Sociology.

One of the outstanding artists in the South, Mrs. Terry began the Creative Arts Committee in October, 1949. Three college students asked her to give sketching instructions. Cooler weather came along and the group was allowed the use of a vacant room on the fourth floor of Bizzell Hall, now used as a dormitory. Furnishings in the Bizzell studio were stools and boards placed across Coke cases for tables. Out of this humble beginning grew the present group of artists, sculptors and craftsmen producing award winning works of art, and one of the most active painting groups in the state.

This year Mrs. Terry won the top award for her water soluble painting that she entered in the National Assn. of Women Artists, Inc., in New York. The painting won highest honors out of 300 paintings that were selected to be put on exhibition. The National Assn. of Women Artists, Inc., has a membership of approximately 1,000 (membership is by juried invitation). Only about eight Texans have been invited as members.

Mrs. Terry was born in San Angelo, Tex., and received her Art Degree from Howard Payne College in Brownwood. She had private art study with Will Stevens of New Orleans, La.; Adele Brunet, New York City and Dallas, Tex.; Anthony DeYoung, San Antonio, Tex.; Jose Arpa, San Antonio, Seville, Spain; and Xavier Gonzalez of New York City.

She has exhibited in the National Academy Gallery, New York City, with the Grumbacher Watercolor Technique Show on tour, as well as with Houston Art League, Texas Fine Arts Assn. of Austin, River Art Show of San Antonio, Texas Water Color Society of San Antonio and the Texas General of San Angelo.

Mr. and Mrs. Terry make their home at 401 Day St. in Bryan. Mr. Terry owns and operates the Terry's Art Shop, Texas Ave. in Bryan.

Corps Staff Takes Yell Practice Fables, Jokes Eliminated

The seating plan in effect at Kyle Field will be basically the same as the plan used last year, Larry White, chairman of the Student Senate Life Committee, said yesterday.

One major change will be in effect. Corps Staff will have charge of enforcement of the Corps section of the seats and the Civilian Student Council will be responsible for seating Civilians. Both Corps Staff and the CSC will work with the senate, said White.

Various cadet guard details will act as the representative of Corps Staff in enforcing Corps seating, said White.

A total of 8,282 seats will be available for students and their dates, said White. The seats will stretch from the 50-yard line in the east stands and extend to the halfway mark on the north end zone seats as in years past.

Civilian Group Meets Tonight

A report from the Aggie Sweetheart Selection Committee will headline the discussion at the Civilian Student Council meeting tonight at 7:15 in the Senate Chamber of the Memorial Student Center.

The meeting will be held at 7:15 instead of the usual 7:30 due to the freshman football game tonight. Council members who are interested in the game will, therefore, have the opportunity to attend.

Other old business will consist of a report on the Student Senate meeting, a Registration Committee report and report from the Parking Committee.

New business on tonight's agenda consists of a discussion of the use of the All-Faith Chapel, Civilian Yell Leader, a review of regulation for dormitory social events and party suggestions for civilian dormitories.

Davis Finishes Mammal Script

Dr. W. B. Davis, head of the Department of Wildlife Management here has completed a manuscript on the Mammals of Texas which will be published in book form soon by the Texas Game and Fish Commission. The book will contain accounts of 138 native and introduced mammals and will include distributional maps, photographs, and information on home life, feeding habits, breeding habits and economic values.

Davis is one of the leading contemporary mammalogists of North America. In addition to the Mammals of Texas.

Choir, Band Opens Tiger Assemblies

By RUSSELL BROWN
CHS Correspondent

The initial appearances of the 1959 A Capella choir and the A&M Consolidated Dance Band marked the opening of assemblies at Tigerland Tuesday.

Under the direction of Frank Coulter and the announcing of President Mike Gay, the choir presented three numbers to the entire high school student body. The 30-voice group sang Handel's "Thanks Be to Thee," "The Bells of St. Mary's" and a Negro spiritual "Who'll Be a Witness for My Lord?"

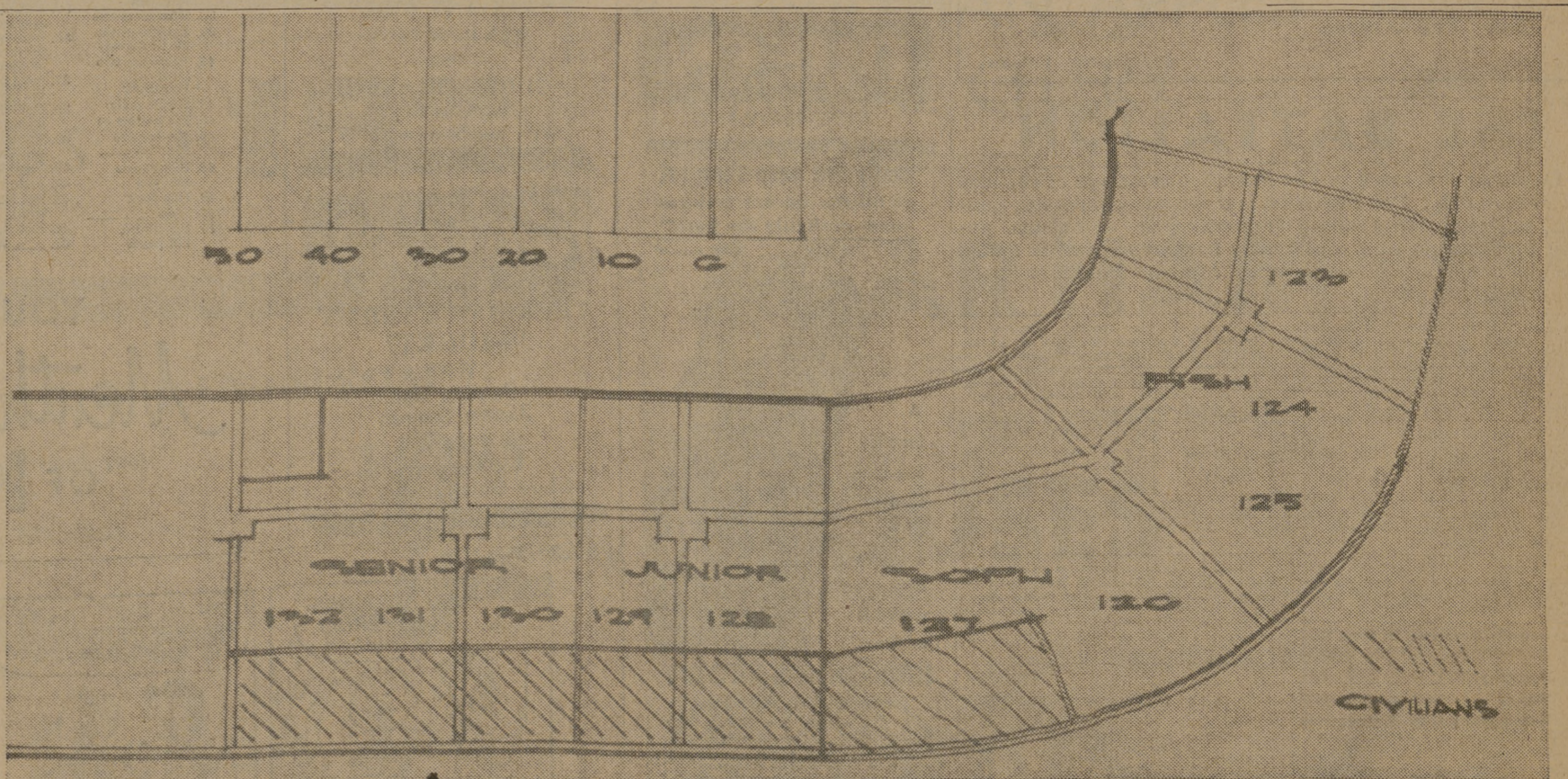
The Dance Band, under the guidance of Band Director Jim Atkins, followed with "Mrs. Pitlack's Regrets," "Mountain Green" and "Blues Progress," a number written and arranged by trumpet player Jay Pruitt.

Following the musical highlight, Mrs. Ermine Worrell, Mrs. A. R. Orr and principal E. P. Ozment presented awards for the Inter-scholastic League District and Re-

gional Literary events of last year. Track Coach Art Bright presented the awards for his tracksters in district, regional and state playoffs before Ozment did likewise for tennis and golf winners.

The final item in the assembly was the presentation of the semi-finalists in the National Merit Award Scholarships from A&M Consolidated. John Calhoun, Howard Mitchell and Bruce Thompson are among the top 10,000 students in the nation from 550,000 participants and 14,500 schools. These three boys will take another exam Dec. 5 to determine the finalists.

Ozment went on to point out the fifteen freshman students of last year that are among the state's top 9 per cent in scholastic average as proven by tests taken last year. David Bailey, Lane Coulter, Carla Denison, Bob Guthrie, Furman Isbell, Shirley Lorenz, Lynn Roy La Motte, Linda McGuire, Ruth McNeil, Richard Rasmussen, Annette Robinson, Jody Rush, Sallie Shephard, Richard Storms and Russell Welch all received certificates from Ozment in recognition.



New Kyle Field Seating Arrangement effective Saturday at University of Houston contest