

The Missouri and Mississippi rivers meet about ten miles north of St. Louis.

Hospitalization & Life Insurance  
**TOM WASSON**  
 Representing  
**Metropolitan Life Insurance Company**  
 TA 2-6232 Office TA 2-6995 Res  
 2016 Texas Avenue

FOR  
**AGGIES & AGGIE WIVES**  
**Two by Two**  
 First Baptist - College

### Purchase Studies by Division Here Show Markets Open to Enterprises

Recent out-of-state purchase studies by the Industrial Economics Research Division of the Texas Engineering Experiment Station have shown the readily available markets open to Texas enterprise in six manufacturing fields.

These are (1) charcoal; (2) kaolin and ball clay; (3) wood and metal furniture and fixtures; (4) insulation products; (5) steel castings; and (6) automotive air conditioning components. Reports on these industries are available.

The charcoal study resulted in the establishment of 14 new charcoal plants in Texas in less than two years. Charcoal production in Texas expanded by 650 per cent as a result of this study.

The industrial economics research staff aids also with community industrial development.

### Wee Aggies

We Aggies like to read about Wee Aggies. When a wee one arrives, call VI 6-4910 and ask for the Wee Aggie Editor.

**A FIGHTING TEXAS AGGIE, DOUGLAS LEE GROVES, WAS BORN TO MR. AND MRS. DON GROVES, '60, ON AUG. 7. THE BABY WEIGHED 6 POUNDS, 11 OUNCES.**

Tammany Hall has been the ruling organization of New York City politics most of the time since 1800.

### HEYE CADET COLONEL

(Continued from Page 1)

Charles Elmer Graf of Rt. 3, Vernon, lieutenant colonel, Headquarters Third Group; John Reems Lister of 1832 Albans Rd., Houston, captain, Squadron 9; Stanley Fred Wied of Burlington, captain, Squadron 10; Charles Allan Benson of Sour Lake, captain, Squadron 11; Robert Allen Reeh of New Braunfels, captain, Squadron 12; Norman Kenneth Dyson of 512 Wilson, Texarkana, lieutenant colonel, Headquarters Fourth Group; Robert Eugene Marshall of Mesquite, captain, Squadron 13; Allen Clarence Ludwig of 207 Walton Ave., San Antonio, captain, Squadron 14; Bobby Lynn Thomas of 1420 Elmwood, Dallas, captain, Squadron 15, and Roy Lee Angermiller of Star Route, Hondo, captain, Squadron 16.

Jon Marshall Pierce of Rt. 1, Pilot Point, captain, Company "F" Second Brigade; Dan Richard Hill of Vernon, captain, Company "G" Second Brigade; William Allison Guynes of Mathis, captain, Company "H" Second Brigade; Charles Homer Vincent of 717 E. 27th, Bryan, lieutenant colonel, Headquarters Fifth Battle Group; George Weber Litton of 1012 S. Dexter, College Station, captain, Company "I" Second Brigade; Hardy Morris Caton of 307 1/2 Haswell Dr., Bryan, captain, Company "K" Second Brigade.

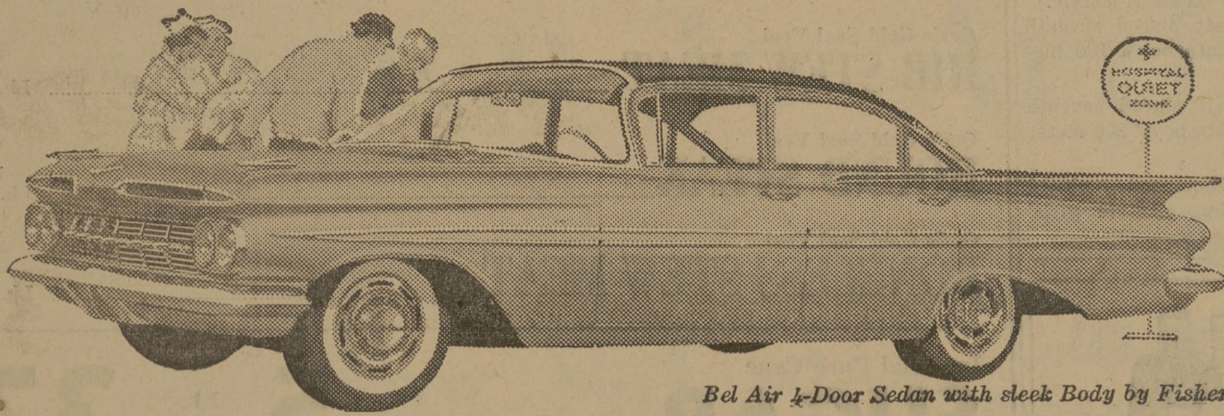
James Franklin Roberts of Rt. 1, Refugio, captain, Company "L" Second Brigade; Howard Bass Payne Jr. of 5527 Truett, Houston, captain, Company "M" Second Brigade; J. C. Burton of 2805 Van Highway, Tyler, colonel, Headquarters First Wing; Ronald Dean Burnett of 5221 Lawndale, Houston, lieutenant colonel, Headquarters First Group; Shelton Rowe Doerkson of Keltys, captain, Squadron 1; Billy John Coley of Waxahachie, captain, Squadron 2; Hubert Oxford III of 4810 Calder Rd., Beaumont, captain, Squadron 3; Russell Dewitt Anthony of 3122 Askew, Houston, captain, Squadron 4; Walter Michael Breen of 124 Thoraine, San Antonio, lieutenant colonel, Headquarters Second Group; Larry Don White of Harlingen, captain, Squadron 5; Edward Leon Winchester of Esterhazy, Sask., Canada, captain, Squadron 6; Charles Austin Thornton of 504 Melton, Texarkana, captain, Squadron 7; Edward Charles Lux Jr. of Rt. 3, Schulenburg, captain, Squadron 8; Percy Duncan Mims of 2111 W. Main, Houston, colonel, Headquarters Second Wing;

### MSC Flick Series Will Close Sunday

The Memorial Student Center free film series, "Operation Flick" will be concluded for the summer season with a program with a musical slant, showing "The Kind of Music You Want" and "Hymn of the Nations" Sunday at 3 p.m. in Rooms 2A-B.

Combining the story of a young organ student with some well-recognized organ music, "The Kind of Music You Want" is a color film. "Hymn of the Nations" features the famous Verdi composition in an award-winning Arturo Toscanini short, with Jan Peerce and the Westminster Choir.

In ancient times in England, no subject could possess a swan without a license from the Crown.



Bel Air 4-Door Sedan with sleek Body by Fisher

# smoothest ride!

One of the 7 big bests Chevrolet gives you over any other car in its field

Anyone who's ever taken a Chevy over a choppy country road can tell you how lightly Chevrolet's Full Coil suspension handles rough going—and coil springs never squeak, never need grease! Try this velvet way of going for yourself. Once you do, you'll find your own way of saying what MOTOR TREND magazine puts this way: "... the smoothest, most quiet, softest riding car in its price class." But the happiest part of it all is that this Full Coil ride is just one of seven big bests—all documented by published opinions of experts and on-the-record facts and figures.

**BEST ROOM**—Official dimensions reported to A.M.A.\* show that Chevrolet sedans offer more front seat head room than all but one of the high-priced cars—more front seat hip room (by up to 5.9 inches) than the "other two" of

the leading low-priced three.

**BEST ENGINE**—Chevrolet engines have long won expert praise from virtually every automobile magazine, and, just recently, Chevrolet received the NASCAR† Outstanding Achievement award for "the creation and continuing development of America's most efficient V-type engines."

**BEST ECONOMY**—A pair of Chevrolet sixes with Powerglide won their class in this year's Mobilgas Economy Run, topping every other full-sized car. And the winning mileage was a whopping 22.38 m.p.g.

**BEST BRAKES**—Chevy's bonded-lining brakes are the biggest in their field, built for up to 66% longer life. In a direct competition conducted by NASCAR, Chevy outstopped both of the other leading

low-priced cars in a test of repeated stops from highway speeds.

**BEST STYLE**—It's the only car of the leading low-priced 3 that's unmistakably modern in every line. "In its price class," says POPULAR SCIENCE magazine, "a new high in daring styling."

**BEST TRADE-IN**—Any N.A.D.A.‡ Guide Book can give you the figures on Chevy's extra value. You'll find that Chevrolet used car prices last year averaged up to \$128 higher than comparable models of the "other two." Your Chevrolet dealer will be happy to tell you about a whole host of other advantages besides these seven. Why not drop by his showroom?

\*Automobile Manufacturers Association.

†National Association for Stock Car Advancement and Research.

‡National Automobile Dealers Association.



Visit your local authorized Chevrolet dealer and see how much more Chevy has to offer!

## The Church ... For a Fuller Life ... For You ...



**Hillier Funeral Home**  
 BRYAN, TEXAS  
 502 West 26th St.  
 PHONE TA 2-1572



**Campus and Circle Theatres**  
 College Station

### CALENDAR OF CHURCH SERVICES

**A&M CHRISTIAN CHURCH**  
 8:30 A.M.—Coffee Time  
 9:45 A.M.—Sunday School  
 11:00 A.M.—Morning Services

**FIRST BAPTIST CHURCH**  
 9:40 A.M.—Church School  
 11:00 A.M.—Worship  
 6:15 P.M.—Training Union  
 7:15 P.M.—Worship

**OUR SAVIOUR'S LUTHERAN CHURCH**  
 9:30 A.M.—Church School  
 8:15 & 10:45 A.M.—Morning Worship

**FAITH CHURCH UNITED CHURCH OF CHRIST**  
 9:15 A.M.—Sunday School  
 10:30 A.M.—Morning Worship  
 7:30 P.M.—Evening Service

**A&M PRESBYTERIAN CHURCH**  
 9:45 A.M.—Church School  
 11:00 A.M.—Worship

**CHRISTIAN SCIENCE SOCIETY**  
 9:30 A.M.—Church School  
 11:00 A.M.—Morning Worship  
 2:00 - 4:00 P.M. Tuesdays—Reading Room

**ST. THOMAS EPISCOPAL CHURCH**  
 8:30 A.M.—Holy Communion  
 9:15 A.M.—Family Service

**ST. MARY'S CATHOLIC CHAPEL**  
 7:30 9:00 A.M. Sunday Masses Confession before Masses

**UNITARIAN FELLOWSHIP**  
 10:00 A.M.—Adult Forum and Church School, YMCA  
 7:45 P.M.—First, third and fifth Sundays, in Y M C A cabinet room

**CHURCH OF JESUS CHRIST OF LATTER DAY SAINTS**  
 26th East and Coulter, Bryan  
 8:45 A.M.—Priesthood Meeting  
 10:00 A.M.—Sunday School  
 7:00 P.M.—Sacrament Meeting

**CHURCH OF THE NAZARENE**  
 10:00 A.M.—Sunday School  
 11:00 A.M.—Morning Worship  
 6:30 P.M.—Young People's Service  
 7:30 P.M.—Preaching Service

**COLLEGE HEIGHTS ASSEMBLY OF GOD**  
 9:45 A.M.—Sunday School  
 11:00 A.M.—Morning Worship  
 6:30 P.M.—Young People's Service  
 7:30 P.M.—Evening Worship

**A&M CHURCH OF CHRIST**  
 9:45 A.M.—Bible Classes  
 10:45 A.M.—Morning Worship  
 6:15 P.M.—Bible Class  
 7:15 P.M.—Evening Service

**BETHEL LUTHERAN CHURCH (Missouri Synod)**  
 8:15 A.M.—Morning Worship  
 9:30 A.M.—Church School  
 10:45 A.M.—Morning Worship

**A&M METHODIST CHURCH**  
 9:45 A.M.—Sunday School  
 10:55 A.M.—Morning Worship  
 4:30 & 6:00 P.M.—M.F. Meetings

College Station's Own Banking Service

**College Station State Bank**

NORTH GATE

**Central Texas Hardware Co.**

BRYAN  
 • HARDWARE  
 • CHINAWARE  
 • CRYSTAL  
 • GIFTS

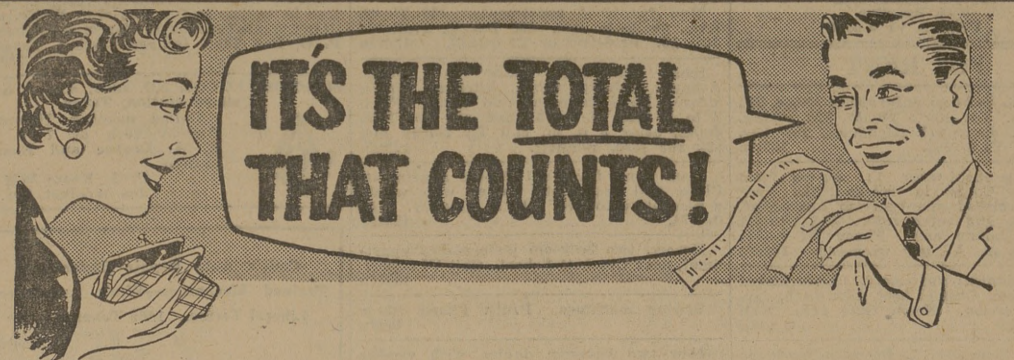
Bryan Communities Since 1909

**First State Bank & Trust Co.**

Member Federal Deposit Insurance Corporation  
 BRYAN

"A Nutritious Food"  
 Lilly Ice Cream Co. Bryan

MELLO CREAM  
  
 BRYAN



### -GROCERIES-

SPRY Shortening ... 3-lb. Can 69c  
 303 Cans—Stokleys  
 Red Pitted Cherries ... 2 Cans 43c  
 2 1/2 Size Cans—O'Sage  
 PEACHES ... 2 Cans 49c  
 No. 2 Cans—Plantation  
 Sliced Pineapple ... 2 Cans 51c  
 6 1/2-Oz. Cans—Star Kist  
 Chunk Style Tuna ... Can 31c  
 Maryland Club  
 Instant Coffee ... 6-Oz. Jar 89c  
 14-Oz. Bottles—Heinz  
 CATSUP ... 2 Bottles 49c  
 5-Oz. Jars—Heinz  
 Strained Baby Food ... 4 For 39c  
 Alcoa  
 Aluminum Foil 1—12"—25' Roll 29c  
 Maryland Club  
 COFFEE ... 1-lb. Can 75c  
 303 Cans—Libbys  
 Sliced Beets ... 2 Cans 31c  
 303 Cans—Libbys  
 Garden Green Peas ... 2 Cans 31c  
 5-lb. Bags—Washburns  
 Pinto Beans ... Bag 55c  
 46-Oz. Cans—Libbys  
 Pineapple Juice ... Can 31c

### -FROZEN FOODS-

Beef Chicken or Turkey  
 Pot Pies ... Each 27c  
 Sliced Peaches Pkg.  
 Sliced Strawberries ... 27c  
 Beef, Chicken or Turkey  
 Complete Dinners ... Each 60c

### -MARKET-

Deckers—Tall Korn  
 Sliced Bacon ... 1-lb. 47c  
 Wisconsin—Medium Aged  
 Cheese ... 1-lb. 55c  
 Swifts Premium  
 Sliced Bacon ... 1-lb. 55c  
 Armour's Star  
 All Meat Franks ... 1-lb. 53c  
 Loin Steak ... 1-lb. 89c  
 Porter House Steak ... 1-lb. 75c  
 Meaty Short Ribs ... 1-lb. 49c

### -PRODUCE-

Lettuce ... 2 Heads 25c  
 Celery ... 2 Stalks 25c  
 White Seedless Grapes ... lb. 15c  
 Illinois Peaches ... 2-lbs. 25c

SPECIALS GOOD THURSDAY AFTERNOON, FRIDAY, AND SATURDAY, AUGUST 20-21-22

**CHARLIE'S FOOD MARKET**  
 NORTH GATE —WE DELIVER— COLLEGE STATION

**The Exchange Store**

"Serving Texas Aggies"

**Bryan Building & Loan Association**

BRYAN

**City National Bank**

Member FEDERAL DEPOSIT INSURANCE CORPORATION

Bryan