



Aggies Play the War Hymn

U. S. Air Force Reserve Officer Training Corps Cadet Capt. Joe Buser, trumpet, formed an impromptu combo to play the "Aggie War Hymn" recently at a tea dance held for the cadets at the Las Vegas, Nev., Convention Center. Others in the photo include Cadets Bo Lee, piano, David Arnold, drums, also from A&M, and A. H. Villarreal, bass, from Southwest Texas State College. Buser graduated from A&M last March. Lee and Arnold, Aggie drum major, will return here in the fall. (Air Force photo)

### Secretaries Hold Monthly Meeting

The monthly meeting of the Bryan-College Station Chapter of the National Secretaries Assn. was held at the Triangle Restaurant Tuesday at 7 p.m. Sixteen members were present. J. Harvey Caddess, guest speaker, associate professor in the Department of Mechanical Engineering, showed slides on the way of life in Dacca, East Pakistan. Caddess recently spent 6½ years as a consultant engineer and professor at Ahsanullah Engineering College. Mrs. J. Harvey Caddess was special guest. At the meeting the date for the annual seminar of the chapter was set for Jan. 9, 1960 in the Memorial Student Center. Mrs. Florence Hall was named chairman of the annual meeting committee of the Texas-Louisiana division of the National Secretaries Assn.

### S. P. Johnson Gets Leave for Research

Dr. Samuel P. Johnson, assistant professor, Department of Plant Physiology and Pathology, has been granted a year's leave of absence to do special work with Boeing Airplane Company's Space Medicine Research unit. Johnson will head a team working on space plant research, and will be a part of the group working on environmental microbiology. The other A&M graduates are also included in the microbiology group; Dr. Arthur J. Pilgrim, head of the section, received his Ph.D. from A&M in 1955 in plant pathology and Dr. Albert Sparks, who holds three degrees from A&M including a Ph.D. in oceanography awarded in 1957. Sparks is presently with the University of Washington. Johnson is a native of Glendale, Calif. He holds a B. S. degree from East Texas State and master's and Ph.D. from A&M. His primary

responsibility as plant physiologist at A&M since 1953 has had to do with research aimed at developing cotton varieties resistant to pink bollworms. He was responsible for the development of L-1, an arsenic acid material, which is widely used as a cotton disiccant. The Boeing scientists are working to develop plant and animal life which will reproduce and can be used as food for man in what is referred to as a closed system. A fish, Tilapia, and various algae are being studied and some progress has been made in producing these foods in purified body wastes. The closed system means that all food, oxygen, liquid and other human needs must be met by production means within the unit. Nothing is wasted and life thus will depend on man's ability to keep the cycle unbroken within the space unit.

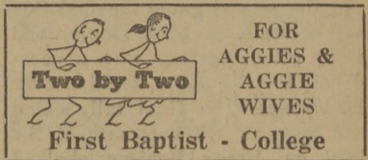
### Dorm 14 Wins Softball League

Dormitory 14 defeated Hart Hall for the Softball Intramural Championship last night. Five teams were entered in the event: Dorm 14, Hart Hall, East Walton, West Walton and a team made up of meteorology students.

R. C. Owen, star pass receiver for the San Francisco 49ers, was sent out while playing for the College of Idaho.

James Cox Brady holds the record for the San Francisco single Monmouth Park season. His horses earned \$84,925 in 1933.

Of the five largest cities in the country, Los Angeles alone showed an increase in marriage in 1957.



### Traffic Engineers, Police Officers Gather For TTI Research Project

Traffic engineers and police officers from the larger cities of Texas gathered on the campus Tuesday afternoon in the interest of a research project of the Texas Transportation Institute. They are members of the Project Advisory Committee for a study involving relationships between traffic accidents and operational and design features of freeways. Charles J. Keese, head of the Highway Design and Traffic Engineering Section of the Texas Transportation Institute, presided at the meeting which was attended by representatives of Beaumont, Houston, Dallas, Austin, Fort Worth, San Antonio and Waco.

Freeways included in the study are as follows: Gulf Freeway and Eastex Freeway, Houston; Central Expressway (north and south), Dallas; East West and North-South Freeways, Fort Worth; North-South Freeway, Austin, and Expressways (north, south and northeast), San Antonio. Research Engineer B. F. K. Mullins is the principal investigator of the project which is aimed at determining the relationship between freeway accidents and the design features of the freeway and to establish improved methods of reporting accidents on freeways. The research project is sponsored by the Automotive Safety Foundation.

### Social Whirl

**Saturday**  
The Aeronautical Engineering Wives Club will hold a family picnic in Hensel Park at 5:30 p.m., Saturday. All aeronautical engineering wives, their husbands and children are invited to attend. Each family should bring their own table service, a fried chicken and one other dish—either a salad, a vegetable dish or a dessert.

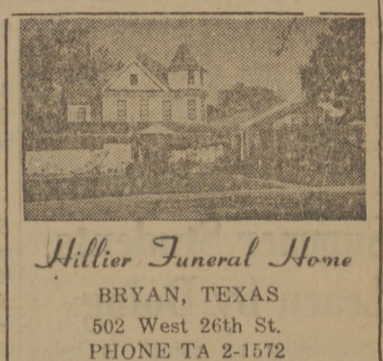
**Monday**  
Mechanical Engineering Wives Club is planning a Social Monday at 7:30 p.m. in the home of Mrs. Allan Alter, 810 S. Mitchell, Bryan.

Bobby Boyd, Chicago middleweight boxer, was first taught boxing by his cousin, Ernest Wilson, a former amateur fighter.

## The Church . . . For a Fuller Life . . . For You . . .

### CALENDAR OF CHURCH SERVICES

- A&M CHRISTIAN CHURCH**  
8:30 A.M.—Coffee Time  
9:45 A.M.—Sunday School  
11:00 A.M.—Morning Services
- FIRST BAPTIST CHURCH**  
9:40 A.M.—Church School  
11:00 A.M.—Worship  
6:15 P.M.—Training Union  
7:15 P.M.—Worship
- BETHEL LUTHERAN CHURCH**  
(Missouri Synod)  
8:15 A.M.—Morning Worship  
9:45 A.M.—Church School  
10:45 A.M.—Morning Worship
- CHURCH OF THE NAZARENE**  
10:00 A.M.—Sunday School  
11:00 A.M.—Morning Worship  
6:30 P.M.—Young People's Service  
7:30 P.M.—Preaching Service
- CHURCH OF JESUS CHRIST OF LATTER DAY SAINTS**  
20th East and Coulter, Bryan  
8:45 A.M.—Priesthood Meeting  
10:00 A.M.—Sunday School  
7:00 P.M.—Sacrament Meeting
- CHRISTIAN SCIENCE SOCIETY**  
9:30 a.m.—Sunday School  
11:00 a.m.—Sunday Service  
2:00-4:00 p. m. Tuesdays—Reading Room
- OUR SAVIOUR'S LUTHERAN CHURCH**  
9:30 A.M.—Church School  
8:15 & 10:45 A.M.—Morning Worship
- A&M METHODIST CHURCH**  
9:45 A.M.—Sunday School  
10:45 A.M.—Morning Worship  
4:30 & 8:00 P.M.—MYF Meetings
- ST. MARY'S CATHOLIC CHAPEL**  
7:30 - 9:00 A.M.—Sunday Masses  
Confessions before Masses
- COLLEGE HEIGHTS ASSEMBLY OF GOD**  
9:45 A.M.—Sunday School  
11:00 A.M.—Morning Worship  
6:30 P.M.—Young People's Service  
7:30 P.M.—Evening Worship
- FAITH CHURCH UNITED CHURCH OF CHRIST**  
9:15 A.M.—Sunday School  
10:30 A.M.—Morning Worship  
7:30 P.M.—Evening Service
- UNITARIAN FELLOWSHIP**  
10:00 A.M.—Adult Forum and Church School, YMCA  
7:45 P.M.—First, third and fifth Sundays, in YMCA Chancel room
- A&M CHURCH OF CHRIST**  
9:45 A.M.—Bible Classes  
10:45 A.M.—Morning Worship  
6:15 P.M.—Bible Class  
7:15 P.M.—Evening Service
- ST. THOMAS EPISCOPAL CHURCH**  
8:00 A.M.—Holy Communion  
9:15 A.M.—Family Service
- A&M PRESBYTERIAN CHURCH**  
9:45 A.M.—Church School  
11:00 A.M.—Worship



*Hillier Funeral Home*  
BRYAN, TEXAS  
502 West 26th St.  
PHONE TA 2-1572



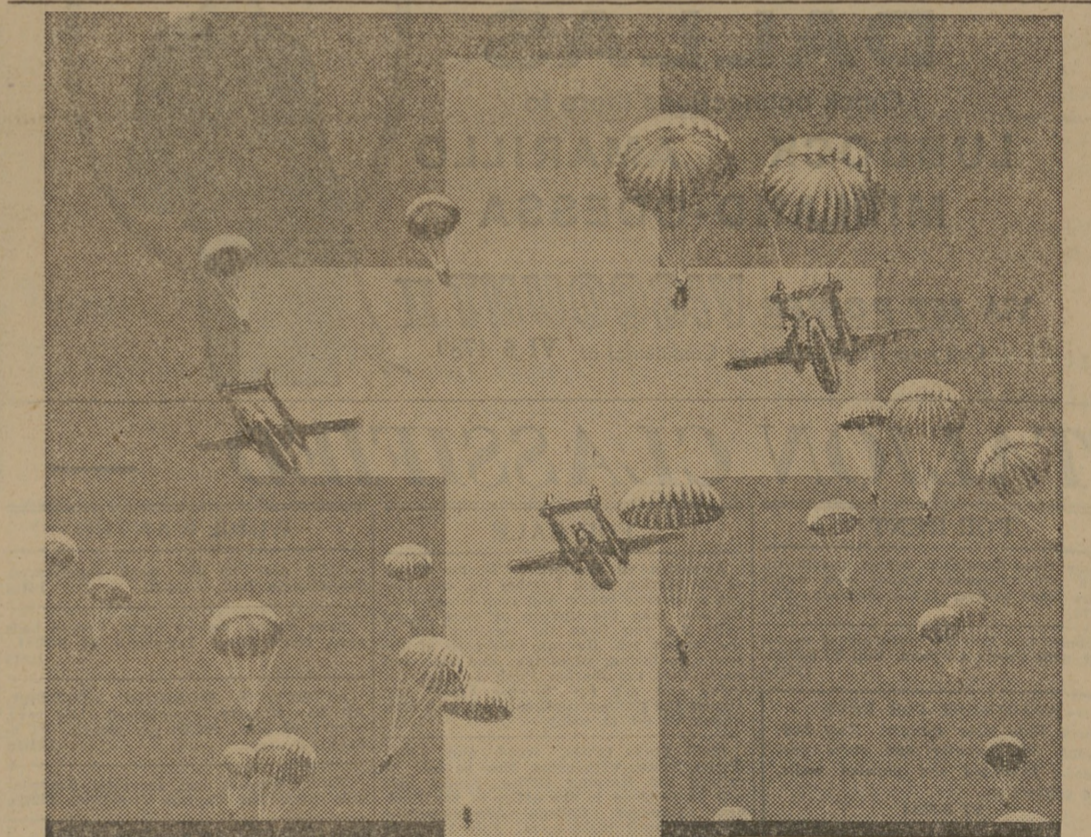
*Extra Good Dairy Products*  
Milk-Ice Cream  
TA 2-3763

**Campus and Circle Theatres**  
College Station

College Station's Own Banking Service  
**College Station State Bank**  
NORTH GATE

**Central Texas Hardware Co.**  
BRYAN  
• HARDWARE  
• CHINAWARE  
• CRYSTAL  
• GIFTS

Bryan Communities Since 1909  
**First State Bank & Trust Co.**  
Member Federal Deposit Insurance Corporation  
BRYAN



**the leap of FAITH**

THE CHURCH FOR ALL . . . ALL FOR THE CHURCH

The Church is the greatest factor and good citizenship. It is a storehouse of spiritual values. Without a strong Church, neither democracy nor civilization can survive. There are four sound reasons why every person should attend services regularly and support the Church. They are: (1) For his own sake. (2) For his children's sake. (3) For the sake of his community and nation. (4) For the sake of the Church itself, which needs his moral and material support. Plan to go to church regularly and read your Bible daily.

Day	Book	Chapter	Verses
Sunday	Romans	5	1-5
Monday	Hebrews	10	10-23
Tuesday	Psalms	118	6-9
Wednesday	I Corinthians	13	1-13
Thursday	Psalms	18	28-32
Friday	Isaiah	12	2-4
Saturday	I Timothy	4	8-12

The motorist has faith in his "chute." The motorist has faith in his brakes. The chopper has faith in the brand-name she buys. All of us exercise our faith a hundred times a day.

Religious faith is like its every-day cousin. It is the same implicit reliance . . . the same daring confidence.

Religious faith comes when we seek it. But there is always the leap. Man has to step from his worldly floor into the spiritual space where God reveals his power and love. He must decide to believe what he cannot prove!

Like the leap of the paratrooper, the leap of faith begins months earlier in careful training.

The day a family starts to attend Church regularly . . . the training begins.

Copyright 1959, Keister Adv. Service, Strasburg, Va.

stock up during our summer **FOOD FESTIVAL**

**-GROCERIES-**

- Maryland Club COFFEE . . . . . 1 lb. Can 75c
- No. 2 Cans Libbys Tomato Juice . . . . . 2 cans 27c
- 46-Oz. Cans—Libbys Tomato Juice . . . . . can 31c
- 46-Oz. Cans—Libbys Pineapple Juice . . . . . can 33c
- 303-Cans—Libbys SPINACH . . . . . 2 cans 27c
- 303 Cans—Libbys Garden Sweet GREEN PEAS . . . . . 2 cans 33c
- 303 Cans Libbys Golden Cream Style Corn . . . . . 2 cans 35c
- 303 Cans—Libbys SLICED BEETS . . . . . 2 cans 35c
- Maryland Club Instant Coffee . . . . . 6 oz jar 89c
- CRISCO . . . . . 3 lb can 89c
- 7½ Oz. Cans Star Kist Chunk Style TUNA . . . . . can 33c
- 300 Size Cans Alma Brand Fresh Blackeye Peas . . . 2 cans 25c
- Fresh Cream Peas . . . . . 2 cans 27c
- No. 1 Cans Nelda Brand TOMATOES . . . . . 3 cans 26c

**-FROZEN FOODS-**

- Pic-sweet Orange Juice . . . . . 2 6 oz. cans 49c
- Sunkist LEMONADE . . . . . 2 6 oz. cans 29c
- Welches—2-6 Oz. Cans GRAPE JUICE . . . . . 41c
- BORDENS MILK—
- 2—½-Gallon Cartons . . . . . 89c
- Gallon Jug . . . . . 85c

**-MARKET-**

- Deckers Tall Korn Sliced BACON . . . . . 1 lb. 49c
- Wisconsin Medium Aged Cheddar CHEESE . . . . . 1 lb. 59c
- Armours Star All Meat FRANKS . . . . . 1 lb. 53c
- Good Hope OLEOMARGARINE . . . . . 2 lbs 35c
- Meaty SHORT RIBS . . . . . 1 lb. 45c
- LOIN STEAK . . . . . 1 lb. 89c

**-PRODUCE-**

- CANTALOPE . . . . . lb. 15c
- CUCUMBERS . . . . . 2 lbs. 15c
- TOMATOES . . . . . 2 lbs. 15c

SPECIALS FOR THUR. AFTERNOON, FRI. & SAT.—JULY 16-17-18

**CHARLIE'S FOOD MARKET**  
NORTH GATE —WE DELIVER— COLLEGE STATION

**The Exchange Store**  
"Serving Texas Aggies"

**Bryan Building & Loan Association**  
BRYAN

**City National Bank**  
Member FEDERAL DEPOSIT INSURANCE CORPORATION  
Bryan

**Lilly**  
ICE CREAM  
"A Nutritious Food"