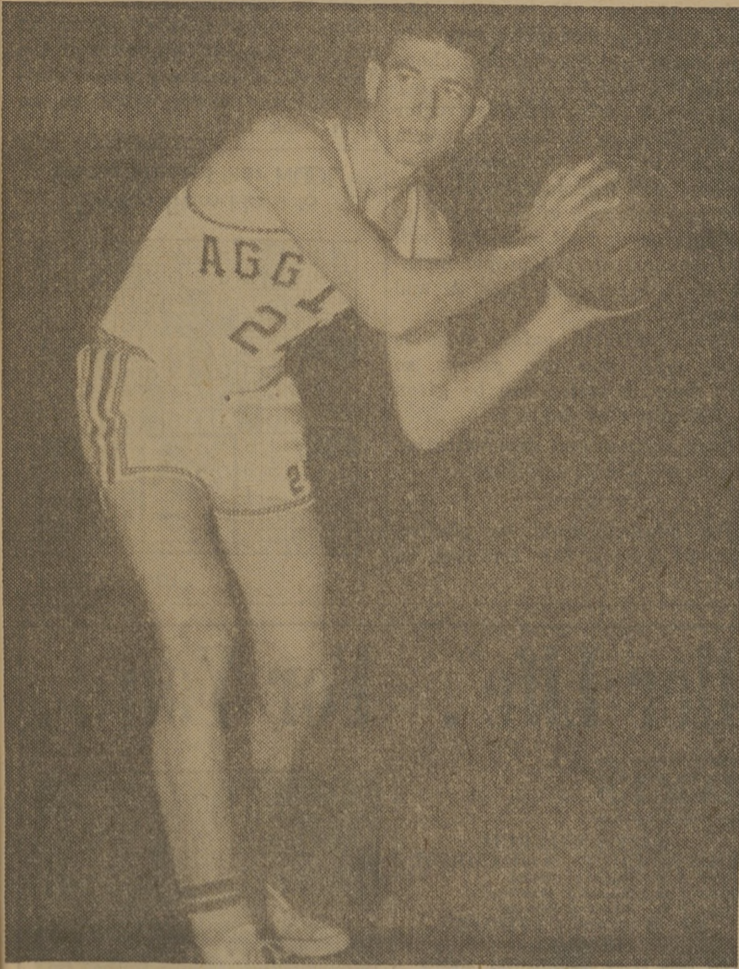


# Aggies Try Rice Saturday in Houston



Wilmer Cox

Cox, a junior college transfer from Kilgore, has fit into Coach Bob Rogers' basketball scheme pretty well. A starter all season long, Cox has scored 124 points in conference play.

## TCU Boasts 68.2 Mark

By The Associated Press  
The proper balance for a Southwest Conference champion in basketball appears to be an average of 68.2 points per game on offense while giving up 62.4 on defense.

That's the season record of Texas Christian, which last week clinched the championship.

In conference play, the Horned Frogs averaged 69.7 and allowed 61.3.

The best defense was Southern Methodist's which allowed only 59.7, but the Mustangs were 6.3 points per game behind TCU on offense.

Statistics for the season show that H. E. Kirchner, the giant Texas Christian center, leads in scoring with 19 points per game in season play and 19.3 in conference warfare. He also leads in rebounds with 278 in 22 games and 161 in 12 conference affairs.

Wayne Clark of Texas has the best field goal average with .500.

## Martindale Leads

### Ag Golf Qualifiers

Sophomore Bill Martindale leads the varsity golf team in nine qualifying rounds with a 641. Par for 162 holes is 630.

The top six varsity qualifiers are Monroe Mitchell, 657; Ed Triplett, 664; Tom Fonseca, 670; James Toland, 672; Al Jones, 682 and Martindale.

These six men will probably form the squad that will meet the University of Houston Cougars here Saturday in a dual meet.

Jim Fetters leads the freshman squad through 144 holes of qualifying with a 560, which is par for this many holes.

The top six frosh golfers who will race the Houston freshmen are Dick Duple, 585; Johnny Johnson, 598; John Lively, 604; Dick Bellmares, 612; Kerman Stroman, 622 and Fetters.

Qualification for both squads will continue all year.

Rice's rampaging Owls try to stay on the comeback trail tomorrow night in Houston when they face Coach Bob Rogers' hot-and-cold-running Aggies.

The Owls have won two straight games, against Baylor and Texas Tech—and hope to make it three as they face the Aggies for the third time this season. A&M came out on top in the first outing in the Southwest Conference Tournament, but Rice charged back strong in their

second meeting to down the Cadets, 70-65.

A&M will be placing their 6-6 conference mark up against a 4-8 record compiled by the Owls. Rice has the conference's seventh leading scorer in lofty Tom Robitaille, who is averaging better than 14 points per game.

Robitaille's 6-9 frame will present something of a problem to the Aggies, who can't match his height but can make up the difference in the scoring department.

## Frosh Close Season Saturday with Owlets

The five freshmen will try to regain their winning touch in the Saturday opener at Houston when they tackle the Rice Owlets, the team that dropped the University of Texas Shorthorns for their lone loss of the season.

Two of the freshmen's four defeats this year have come at the hands of the Shorthorns. Balancing up the ledger, the fish downed the Owlets earlier this year by a 64-51 score.

Leading the Ags will be Carroll Broussard who paces the squad in field goals and free throw shooting. The 6-5 frosh averages 18.6 points per game and is hitting the bucket at a .497 clip. He is second in rebounding with 104.

Another starter for the young Aggies will be the towering Don Riggan. Riggan, at 6-10, is the tallest Cadet in A&M basketball history. Probably one of the most improved cagers on the team, Riggan has pulled down 85 rebounds and scored 90 points.

Leading rebounder for the Farmers is John Keller. Keller has 119

Archie Carroll, the 6-6 senior from Redlands, averages 16 points per game for A&M while Neil Swisher is just a step behind with a 15.5 average. Robitaille has a lead in rebounding with 120 in conference play, good enough for fourth in the SWC while the Aggies can't place one in the top 10.

Other leaders for the Rice five are seniors Gary Griffin and Jay

Mellvain. Griffin is No. 2 in the field goal percentage leaders with a .481 average followed by Mellvain with a .476. One other Owl, David Craig, is tied with Carroll for fifth in shooting accuracy with a .467 average.

Comparing the two teams as a whole Rice has averaged 61.5 points per game while the Cadets have been a little stronger at 62.2. The Aggie defense has limited their opponents to little more than 60 points per game while Rice has seen their opponents 62.4 points per game.

There is one other Rice player who deserves more than just a passing mention. Dale Ball, the blond flash from Lubbock, has been a knife in the side of A&M all season with his lightning-like breaks under the basket. The 6-0 Ball is called the fastest player in the conference—something the A&M team can't come close to matching.

As far as conference standings go, a Farmer win or loss won't have much effect. If the Cadets win this game and the Texas Tech Red Raiders lose their Saturday at Waco it will throw the two teams into a tie for third with a 7-6 conference mark.

TCU has already sacked up the championship, but they could throw a crimp into SMU's sail if they down the Mustangs in their Saturday battle.

If they do A&M will battle it out Tuesday night with the Ponies in White Coliseum to see who will wind up the season in the second place spot—that is, if Tech already isn't there.

## Bowman's Club Invite Ag Members

Knox Walker and Ted Davich, heads of the Brazos Bowman Club, have invited anyone interested in the archery to join the club here at A&M.

The organization will be two years old in June and presently has 12 members. In the club's two years of existence, it has acquired membership in the Texas Field Archery Assn. and the National Field Archery Assn.

In the past, the club has entered various tournaments throughout the state. They plan to sponsor several tournaments to be held here in the spring.

Fourteen targets have been set up near Easterwood Field. The targets are actual decoys with hay background. The group holds practice sessions on weekends.

No waiting . . .  
**HOTARD'S**  
Cafeteria

JOIN *Loupot's*  
**Silver \$ Club**  
YOU CAN WIN . . . \$17.50

## JEFFERSON STANDARD LIFE . . .

Helping Americans  
From Coast To Coast Toward  
A Better Way Of Life

Sales and Service offices in 29 states,  
the District of Columbia and Puerto Rico.

Jefferson Standard in 1958 paid \$25,951,727, more than ever before, in benefits to policyholders and beneficiaries . . . bringing security, contentment and hope to the lives of these Americans from coast to coast. These benefit dollars helped pay for college educations, cared for widows and children, provided carefree retirement days for older people and blessed families with ready cash when it was needed most.

Premiums on new life insurance sales provided millions of additional dollars for sound investments in industrial sites, in mortgage loans and in government bonds . . . creating a stronger economy and a higher standard of living for all Americans.

Investment earnings again enabled Jefferson Standard to maintain its position of leadership in paying 4% interest on dividend accumulations and policy proceeds left on deposit with the Company to provide income. Now guaranteeing 2 1/4% interest, Jefferson Standard has never paid less than

4% interest since the Company was founded in 1907 . . . the highest rate paid by any major life insurance company in the United States.

### HIGHLIGHTS OF OPERATIONS FOR 1958:

- Payments to Policyholders And Beneficiaries amounted to \$25,951,727
- Total Payments since 1907: \$347,873,023
- Sales of New Life Insurance were \$217,696,195, bringing total Insurance in Force to a new high of \$1,803,871,538 as of December 31, 1958
- Net Rate of Interest Earned On Investments: 5.09%
- Increase in Assets: \$43,968,524

### JEFFERSON STANDARD'S CONDENSED 52nd ANNUAL STATEMENT DECEMBER 31, 1958

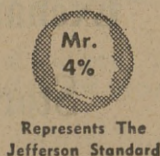
ASSETS		LIABILITIES	
Cash	\$ 5,649,011	Policy Reserves	\$361,767,041
Bonds	161,352,798	Reserve for Policy Claims	1,449,532
Stocks	48,563,792	Policy Proceeds Left with Company	51,191,424
Mortgage Loans	245,165,867	Dividends for Policyholders	5,330,248
Investment Real Estate	23,540,281	Policy Revocation & Mortality	
Other Real Estate including Home Office Building	5,618,264	Fluctuation Reserve	6,628,471
Loans to Policyholders	35,141,329	Investment Fluctuation Reserve	22,328,700
All other Assets	15,742,523	Other Liabilities and Reserves	12,578,449
<b>TOTAL ASSETS</b>	<b>\$540,773,865</b>	<b>TOTAL LIABILITIES</b>	<b>\$461,273,865</b>
		Contingency Reserve	6,000,000
		Capital and Surplus	73,500,000
		<b>TOTAL</b>	<b>\$540,773,865</b>

JUDSON C. WOMBLE, DISTRICT MANAGER

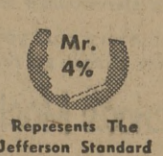
Albert W. Seiter, Jr. and Jack Werner, Representatives

2601 Texas Avenue, Bryan, Texas

Phone TA 2-0018



**Jefferson Standard**  
LIFE INSURANCE COMPANY  
Home Office: Greensboro, N.C.



in the spirit of **SPRING**

**Sport Shirts**  
Pep-up your sport shirt wardrobe with your choice of these winning numbers, featuring all the newest, smartest ideas for spring.

Wide choice of colors, patterns

**Loupot's**

IT PAYS TO TRADE WITH LOU

Get **WILDROOT CREAM-OIL Charlie!**

N. BONAPARTE, French G. I., says: "Wildroot conquers dry, unruly hair!"

Just a little bit of Wildroot and...WOW!