

Aerial Minded Cadets Face Hog Land Attack

Texas A&M, featuring the Southwest's top "home-run" threat in Charley Milstead, takes on winless but improving Arkansas Saturday night on Kyle Field. Kick-off is at 8 p.m.

The game will mark the final home appearance for the Aggies, who wind up on the road against SMU, Rice and Texas.

Milstead led the Aggies over Baylor last week in a 33-27 thriller that saw the blond Tyler bombshell run 74 yards on the first A&M play from scrimmage and toss a 63-yard touchdown pass in the final minutes. In between, he ran and passed for 234 yards to increase his offensive lead in the conference to almost 200 yards over his nearest competitor. His favorite target was end John Tracey who is the loop leader in receptions with 20 for 254 yards. End

Travis Nevill and fullback Luther Hall also caught some key passes. The win over Baylor gave the Aggies a 3-3 season mark and 1-1 in loop play. Although the Razorbacks are winless in six starts, they played the nation's fifth-ranked club, Ole' Miss, to a 12-14 game and have been improving each week.

Frank Broyles has fast backs capable of exploding for scores any place at any time, and a small, quick line. In fullback Donnie Stone, Arkansas has a runner comparable to Baylor's fine Larry Hickman.

Stone and halfbacks Jim Mooty and Freddie Akers led the Porker running attack while Jim Mooty is the top passer.

The Aggies may have the top pair of quarterbacks at the school since Marion Pugh and Cotton Price led the 1939 Aggies to a national championship. Sharing honors with Milstead is Ed Dudley of Pampa who sparked the second team to the two rallying scores against Baylor in the final quarter and paved the way for Milstead's 63-yard pay-off pitch to Hall.

The work of Milstead and Dudley has earned them full restitution for their earlier "sins" on the gridiron. Following his fumbles against TCU Milstead carried a football to class with him an entire week and Dudley was moved out of the new A&M athletic dorm, Henderson Hall.

For their play against Baylor the pair, like Hercules, have completed their labors and are back in Coach Jim Myers' good grace.

In spite of Milstead's great run against the Bears, the Aggies basically must move the ball by air.

"Regardless of what people may think of our running game, it's not going to be good," Myers said, "because of the lack of physical strength and speed in the line." Injuries, too, have kept the Aggies from having much needed contact in practice.

MYERS HAS SHOWN THAT AN ACCURATELY THROWN AND SKILLFULLY CAUGHT FOOTBALL (EVEN WITH ONLY ONE WING) CAN BE A POTENT WEAPON.....

THE BATTLE - SCARRED PORKERS MAY BE LOOKING FOR A LITTLE BLOOD AT AGGIELAND....

BUT IF OLD SARGE DOESN'T SIT BACK ON HIS LAURELS HE MAY HAVE A GOOD CHANCE TO WIND UP SITTING ON THE HOGS....

CELLAR DOOR

A&M-Baylor Tilt Sets New Records

By The Associated Press
The Texas A&M-Baylor game last week set a flock of season highs in the Southwest Conference football race with Baylor's Larry Hickman and A&M's Charley Milstead and John Tracey in the limelight.

When Hickman carried the ball 24 times for 114 yards he set a season record for rushing and his three touchdowns also were a season high. Milstead's 74-yard run for a touchdown was the longest from scrimmage in the league this year.

Tracey took 7 passes for 102 yards, which was the most yardage in a single game and tied the record for the number. Charley Barnes of Arkansas caught 7 for 84 yards against Tulsa Sept. 27.

Jim Mooty of Arkansas hung up a record when he gained 120 yards rushing against Mississippi.

Clair Branch of Texas had the longest pass interception return when he took one back 90 yards against Rice.

A & M Sports in Brief

Two outstanding young coaches who met as rookies in another league last year will meet again Saturday night on Kyle Field when Texas A&M hosts Arkansas.

Frank Broyles of Arkansas and Jim Myers of the Aggies, both of whom learned their football from two of the game's top masters, met in 1957 in the Big Eight conference when Broyles was at Missouri and Myers at Iowa State.

Last fall Broyles' Missouri team beat Iowa State, 35-13, but game odds slightly favor Myers in this year's meeting.

Broyles played and coached under Bobby Dodd at Georgia Tech while Myers played under John Barnhill, now Arkansas athletic

director, and Gen. Bob Neyland at Tennessee. The Aggie coach then served for nine years as top assistant to Red Sanders at Vanderbilt and UCLA.

★★★
Texas Aggie runners will enter the Texas Invitational Cross-Country meet at Austin Saturday morning.

Coach Charley Thomas' harriers dropped a 23-33 decision to Oklahoma State here Saturday with A&M's Freddie Dulock of Axtell

finishing second with a time of 4:57, his best ever. It was Dulock's first time under 15 minutes.

Other finish spots for the Aggies had Richard Hickman of College Station fifth, Jimmie King of Monahans sixth and Jack Heald of Dalhart ninth.

A&M will join teams from Oklahoma, Texas, Houston, Howard Payne, Brooke Army Medics and others at Austin this week. The Aggie frosh also will enter.

Two Aggies High In National Stats

A&M may not be one of the top 20 teams in the nation, but two members of the squad are doing fine in national statistics.

Tailback Charley Milstead is the nation's No. 3 man in total offense, trailing the leader by only 33 yards, and ranks 12th in passing.

Veteran end John Tracey, Milstead's favorite target in the single-wing passing attack, is sixth among the nation's pass receivers.

Guion
THEATRE
THURSDAY & FRIDAY
BOMBERS
B-52
WARNER COLOR STARRING
NATALIE WOOD
KARL MALDEN
MARGA HUNT-FREEMAN ZIMBALIST

CIRCLE
THURSDAY & FRIDAY
Suspense and Terror!
JAMES STEWART
KIM NOVAK
IN ALFRED HITCHCOCK'S
VERTIGO
Plus
Walt Disney's
"CINDERELLA"

SKYWAY
THURSDAY
Fess Parker in
"LIGHT IN THE FOREST"
Plus
baby doll
FROM WARNER BROS. STARRING
KARL MALDEN - CARROLL BAKER
ELI WALLACH
The management does not recommend children under 14 to see "Baby Doll"

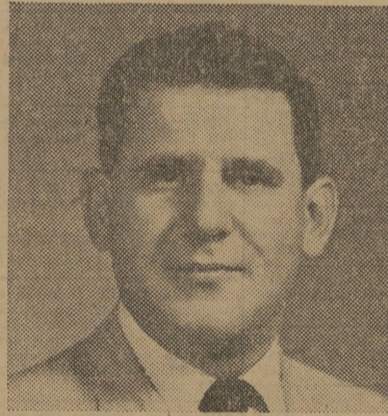
Visit the
CHARCOAL ROOM
at the
TRIANGLE
3606 S. College TA 2-1352
• Choose your steak—watch it cook
• Steaks starting at \$1.50

Job facts from Du Pont

DU PONT PLANTS AND LABORATORIES IN 26 STATES OFFER VARIED JOB LOCATIONS TO TECHNICAL STUDENTS

BENEFIT PROGRAM MEANS ADDED INCOME

by E. H. Cox
Du Pont personnel representative



Don't forget the "extras" of an employee benefit program when you compare the job offers and salaries of different companies. At Du Pont, these extras mean added income that doesn't always meet the eye. They include life insurance, group hospitalization and surgical coverage, accident and health insurance, pension plan and paid vacation.

In addition, the Company sponsors a thrift plan. After two years of service, for every dollar you invest in U. S. Savings Bonds the Company sets aside 25 cents for the purchase of common stock in your name. Roughly, 60,000 of our employees are now participating in this plan.

If you have specific questions on Du Pont benefits, just send them to me. I'll be happy to try to answer them. E. I. du Pont de Nemours & Co. (Inc.), Room 12421 Nemours Building, Wilmington 98, Delaware.

EXPANSION PROGRAM OPENS UP MANY NEW CAREER OPPORTUNITIES

The location of your first assignment with Du Pont depends on your qualifications and on the openings in your field, but every effort is made to match the job and the location with your preference. The chances for a successful match are good.

Today there are men and women carving out careers with Du Pont at more than 75 plants and nearly 100 laboratories spread throughout 26 states. Last year the Company spent \$220 million for new plants and for increased capacities at existing installations. This year new plants have already been put into operation in Virginia and Michigan. Six more are under construction. Others are planned for the near future.

Most Du Pont units, it is true, are located east of the Mississippi. Company headquarters, for example, along with many labs and plants, are located in and around Wilmington, Delaware, which is a pleasant residential area within easy reach of Washington, Philadelphia and New York. But there are also plants and laboratories in California, Iowa, Kansas and Texas, and plants in Colorado, Missouri and Washington.

Wherever you're assigned, you'll be proud of the Du Pont Company both on and off the job. You'll find the people you work with friendly, stimulating, and active in the life of the community.

MECHANICAL ENGINEERING MOVIE AVAILABLE FOR A.S.M.E. MEETINGS

There's a great demand for mechanical engineers at Du Pont. In fact, the ratio of mechanical to chemical engineers is just under 1:2. Whether your chosen field is research, development, plant engineering, production supervision or sales engineering, you'll find a good future at Du Pont.

If you would like to learn in detail what mechanical engineers do in the chemical industry, arrange to see the Du Pont film, *Mechanical Engineering at Du Pont*. It is available at no cost for A.S.M.E. chapter meetings, fraternity house and dormitory showings. Write to Room 12421 Nemours Building, E. I. du Pont de Nemours & Co. (Inc.), Wilmington 98, Delaware.

SEND FOR INFORMATION BOOKLET

Informational booklets about Du Pont are yours for the asking. Subjects include: mechanical, civil, metallurgical, chemical, electrical and industrial engineers at Du Pont; technical sales, research and development. Just name the subject that interests you and send your name and school address to E. I. du Pont de Nemours & Co. (Inc.), Room 12421 Nemours Building, Wilmington 98, Delaware.



THE DU PONT REPRESENTATIVE WILL VISIT THE CAMPUS NOVEMBER 10-11
SIGN UP TODAY AT YOUR PLACEMENT OFFICE FOR AN INTERVIEW

HAPPY HAUNTING GROUNDS FOR FOOD BARGAINS

-GROCERIES-		-FROZEN FOODS-	
CRISCO	3 lb. can 89c	Beef, Chicken or Turkey POT PIES	each 26c
300 Size Cans Kimbells PORK & BEANS	3 cans 29c	Beef, Chicken or Turkey COMPLETE DINNERS	each 69c
300 Size Cans Kimbells Fresh BLACKEYE PEAS	2 cans 25c	Sliced STRAWBERRIES	each 25c
Niblets Whole Kernel GOLDEN CORN	2 cans 35c	-MARKET-	
303 Cans Libbys Small Whole BEETS	2 cans 37c	Deckers Tall Korn Sliced BACON	pound 53c
14 Oz. Bottles Libbys CATSUP	2 bottles 37c	Armours Star, All Meat WEINERS	pound 55c
Folgers COFFEE	1 lb. can 83c	Wisconsin Daisey CHEESE	pound 59c
200 Size Cans Hunts Solid Pack TOMATOES	2 cans 31c	Meaty SHORT RIBS	pound 49c
46 Oz. Cans Libbys GRAPEFRUIT JUICE	can 31c	Square Cut SHOULDER ROAST	pound 59c
No. 2 1/2 Cans Libbys PEACH HALVES	can 33c	Seven Bone STEAK	pound 79c
6 Oz. Jars Folgers INSTANT COFFEE	jar \$1.09	VEAL CHOPS	pound 79c
Bath Size Cashmere Bouquet TOILET SOAP	4 cakes 39c	Porter House STEAK	pound 69c
No. 2 1/2 Cans Prattlow Whole Spiced PEACHES	can 29c	LOIN STEAK	pound 89c
13 Oz. Tall Cans Libbys Crushed PINEAPPLE	2 cans 37c	-PRODUCE-	

Specials For Thur. Afternoon, and Fri. — Oct. 30-31 and Sat. Nov 1

CHARLIE'S FOOD MARKET
NORTH GATE — WE DELIVER — COLLEGE STATION