

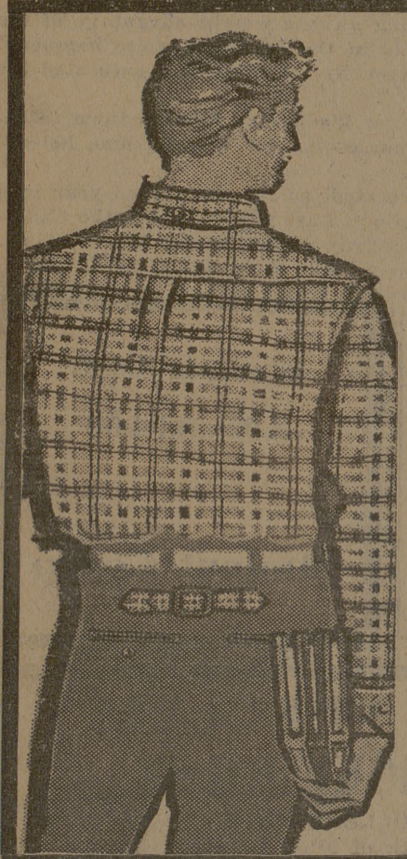
Local Church Women To Gather For World Community Program

Local women will gather in Our Saviour's Lutheran Church next Friday, Nov. 1, to pray for peace, to make offerings of money to help the people of East Pakistan, the Near East and Africa, and to present their "Parcels for Peace."

Occasion for the special service—at 9:30 a.m.—will be World Community Day, sponsored annually by the United Church Women of the National Council of Churches.

The local program is being planned by the College Station Council of Church Women, with Mrs. Ed Svendsen serving as program leader.

"Parcels for Peace" will contain blankets, household linens, warm clothing, and cloth for additional garments. They will be shipped to the needy overseas from Church Service Centers in New York, Missouri, Indiana and California.



Army, Let's Dress Up This Weekend
It's Ivy League All The Way
Get Your IVY LEAGUE PANTS And SHIRTS From
The Beautiful Selection of TULANE and CAMPUS Sportswear
Now At
LOUPOT'S

BATTALION CLASSIFIED

WANT AD RATES
One day 2¢ per word
2¢ per word each additional day
Minimum charge—40¢
DEADLINES
6 p.m. day before publication
Classified Display
30¢ per column inch each insertion
PHONE VI 6-6415

FOR SALE
One English bicycle. Phone VI 6-4367 or see at 811 Fairview. 35t4
IF YOU GOTTA GO, WHY NOT GO FIRST CLASS? An insurance policy for any size halo... Eugene Rush, North Gate. 28tfn

FOR RENT
Two bedroom furnished garage apartment. One mile south A&M, Highway 6. Golden Rule Poultry Farm, VI 6-4669. 38tfn
Four room furnished apartment, water and gas furnished. See at 2108 Cavitt Drive, Bryan. 32tfn
Four room apartment, furnished, in Bryan. Call VI 6-5638. 276tfn

HELP WANTED
Waitress wanted. Must be over 18. Experience not necessary. Apply in person between 10 and 5. Triangle Drive In. 284tfn
Car hops wanted. Must be over 18. Apply in person between 10 and 5. Triangle Drive In. 284tfn

Frank Robinson of the Cincinnati Redlegs led National Leaguers in scoring runs in 1956 with 122. Thirty-eight came on home runs.

Dr. Carlton R. Lee
OPTOMETRIST
303A East 26th
Call TA 2-1662 for Appointment
(Across from Court House)

RADIO & TV SERVICE
BY
SOSOLIK
713 S. MAIN
Across from Railroad Tower
Our Policy—You must be Satisfied
TA 2-1941 — BRYAN

See
JOE FAULK
for —
● Furniture ● Auto Parts
● Hotpoint Appliances
● Dixie Range
● Mathes Air Conditioners
● Dearborn Heaters
● GE Small Appliances
214 N. Bryan
Cavitt at Coulter
JOE FAULK '32 — Owne

CLEARANCE SALE
1957 PLYMOUTH 2 DR HARDTOP
and
1957 DODGE 2 DR HARDTOP
(Demonstrator)
ONLY TWO '57 MODELS LEFT
—BARGAIN PRICED—
SEE US TODAY!
HALSELL MOTOR CO., INC.
1411 Texas Ave. TA 2-3784

Where the Art of
Hotard's Cafeteria Cooking Is Not Lost

Weekend Worship Programs Announced By Churches

WESTMINSTER STUDENT FELLOWSHIP

Richard Warmker will lead group study and discussion on the subject, "Why Foreign Missions When America's Back and Front Yards Need the Gospel?", when the Fellowship meets at 7 p. m. Sunday at the A&M Presbyterian Church. Johnny Williams will lead the worship.

ST. MARY'S CATHOLIC CHAPEL

Because of the football weekend, an additional Mass—at 11:30 a. m.—will be celebrated Sunday. The regular Masses are at 7, 8:30 and 10 a. m.

OUR SAVIOUR'S LUTHERAN CHURCH

Pastor Edwin A. Svendsen will address his congregation on the topic, "The Unfinished Reformation" at the two Sunday morning services. Sunday school and Aggie Bible class meet at 9:30 a. m.

All members of the congregation and friends are invited to hear the proposal of 1958 budget Monday.

A&M CHURCH OF CHRIST

Mont Whitson, minister, will preach on "Salvation in the Church" at the morning service and on "Similitude of the Kingdom" at evening worship.

BETHEL LUTHERAN CHURCH

The Rev. William C. Petersen has selected as his Sunday morning sermon topic, "How to Keep the Love Command of Jesus." Couples Club will meet at 7:30 p. m. Sunday.

CHRISTIAN SCIENCE SOCIETY

"Man's responsibility for spiritual growth and progress" will be emphasized in the lesson-sermon entitled "Probation after Death" at services Sunday.

FAITH UNITED CHURCH OF CHRIST

"The Call That Comes From God" will be the subject for the Rev. R. F. Buck's Sunday morning sermon. His weekly radio broadcast will be heard at 7:30 a. m.

The Rev. Buck will also preach at the 8:30 morning worship service at the Zion United Church of Christ in Kurten. Sunday school classes will be held immediately following the worship service. Youth Fellowship meets at 5 p. m., followed by Family League at 5:30.

A&M CHRISTIAN CHURCH

Sunday's schedule: coffee hour, 9:30 a. m.; Sunday school, 9:45; worship hours, 11 a. m., with "Some Thoughts on Sputnik" by the Rev. Clarence Ketch; 5:30 p. m., DSF supper and worship program.

UNITARIAN FELLOWSHIP OF BRAZOS COUNTY

Adult forum meets at 10 a. m. Sunday at the YMCA.

ST. THOMAS EPISCOPAL CHURCH

The Rev. Roger Cilley will deliver the sermon at the two morning prayer services. Coffee will

Social Whirl

Industrial Engineering Wives will meet at 7:30 p. m. Monday in the industrial engineering lounge for business and a game night. Everyone is asked to bring a white elephant gift. Ruth Erwin and Kathleen Volz will be hostesses.

Architect Wives and their families will gather for a covered dish supper at 6:30 p. m. Monday in Hensel Park.

New officers for the current year were elected by the Band Wives Club at its Tuesday night meeting at the home of Rowene Miller.

They are Marlene Bryan, president; Margaret Fallin, vice president; Betty Jones, secretary-treasurer; Gail Boykin, parliamentarian; Audrey Cole, reporter.

be served in the parish hall between the 9:15 and 11 o'clock services. Adult church school meets at 10 a. m., and the Inquirers class at 8 p. m.

12th MAN FOR CHRIST EVANGELISTIC SERVICES FEATURING:

- AGGIE SPEAKERS
 - Bob Barr
 - Max Barnett
 - Tom R. Harris
 - Tom McDougald
- TESTIMONIES BY
 - Bill Anderson
Baylor End
 - Darrell Brown
Aggie Guard
 - Roddy Osborne
Aggie Quarterback
 - Henry Pearson
Aggie End
- MUSIC BY
 - Baylor Religious Hour Choir
Saturday, 7:15 p. m.

Friday and Saturday services at 7:15 p. m.
Sunday services at 11:00 a. m. and 7:15 p. m.
First Baptist Church, College Station

The Church... For a Fuller Life... For You...

Hillier Funeral Home
BRYAN, TEXAS
502 West 26th St.
PHONE TA 2-1572

Extra Good Dairy Products Milk-Ice Cream
TA 2-3763
Sanitary FARM DAIRIES

Texas Central Life Insurance Company
Bryan, Texas

The Exchange Store
"Serving Texas Aggies"

CALENDAR OF CHURCH SERVICES

A&M CHRISTIAN CHURCH
8:30 A.M.—Coffee Time
9:45 A.M.—Sunday School
11:00 A.M.—Morning Services

FIRST BAPTIST CHURCH
8:40 A.M.—Church School
10:50 A.M.—Worship
6:15 P.M.—Training Union
7:15 P.M.—Worship

BETHEL LUTHERAN CHURCH (Missouri Synod)
8:00 A.M.—Morning Worship
9:30 A.M.—Church School
10:45 A.M.—Morning Worship

CHURCH OF THE NAZARENE
10:00 A.M.—Sunday School
11:00 A.M.—Morning Worship
6:30 P.M.—Young People's Service
7:30 P.M.—Fellowship Service

A&M PRESBYTERIAN CHURCH
8:45 & 11 A.M.—Worship
9:45 A.M.—Church School

CHRISTIAN SCIENCE SOCIETY
9:30 A.M.—Church School
10:45 A.M.—Morning Worship

OUR SAVIOUR'S LUTHERAN CHURCH
9:30 A.M.—Church School
8:15 & 10:45 A.M.—Morning Worship

A&M METHODIST CHURCH
9:45 A.M.—Sunday School
10:55 A.M.—Morning Worship
4:30 & 6:00 P.M.—MYF Meetings

UNITARIAN FELLOWSHIP
10:00 A.M.—Adult Forum and Church School, YMCA
7:45 P.M.—First, third and fifth Sundays, in Y M C A cabinet room.

SEVENTH DAY ADVENTIST
Legion Hall, Highway 21 East
9:30 A.M.—Sabbath School
11:00 A.M.—Morning Worship

CHURCH OF JESUS CHRIST OF LATTER DAY SAINTS
26th East and Coulter, Bryan
8:45 A.M.—Priesthood Meeting
10:00 A.M.—Sunday School
7:00 P.M.—Sacrament Meeting

FAITH CHURCH UNITED CHURCH OF CHRIST
9:15 A.M.—Sunday School
10:30 A.M.—Morning Worship
7:30 P.M.—Evening Service

COLLEGE HEIGHTS ASSEMBLY OF GOD
9:45 A.M.—Sunday School
11:00 A.M.—Morning Worship
6:30 P.M.—Young People's Service
7:30 P.M.—Evening Worship

A&M CHURCH OF CHRIST
9:45 A.M.—Bible Classes
10:45 A.M.—Morning Worship
6:15 P.M.—Bible Class
7:15 P.M.—Evening Service

ST. THOMAS EPISCOPAL CHURCH
8:00 A.M.—Holy Communion
9:15 A.M.—Church School
9:15 & 11 A.M.—Morning prayer and sermon

REORGANIZED CHURCH OF JESUS CHRIST OF LATTER DAY SAINTS
9-9:45 A.M.—YMCA (Class)
6-7:30 P.M.—111 Nagle (Linhona and League Fellowship Service)

ST. MARY'S CATHOLIC CHAPEL
7:00 A.M.—Mass
8:30 A.M.—Mass
10:00 A.M.—Mass

College Station's Own Banking Service

College Station State Bank
NORTH GATE

Central Texas Hardware Co.
BRYAN
● HARDWARE
● CHINAWARE
● CRYSTAL
● GIFTS

Bryan Communities Since 1909
First State Bank & Trust Co.
Member Federal Deposit Insurance Corporation
BRYAN

Lilly
"A Nutritious Food"
Lilly Ice Cream Co. Bryan
MELLO CREAM

DYERS-FUR STORAGE HATTERS
American LAUNDRY DRY CLEANERS
ROLAND DANSBY '31
For Your Convenience—Pick Up Station
AT TAYLOR'S VARIETY STORE

LIBRARY
FE
Nun
F
C
C
Co
Planni
drawn
future
A
presen
dents,
measu
set up
of the
Al
problem
city pr
with th
County
which
One
the com
an, Coll
and Bra
streets
lege Sta
gether.
ning fo
cities co
combine
reach 10
Colleg
the tota
plete pla
year per
gins. C
Associat
named t
amount
tion may
citizen p
firm will
experte
the pay
In dist
need

A do-
ly bough
ment an
two wee
and tub
car.
After
wiring a
the Ag
settled
that soo
But to
was non
Well,
nounce
ex EE
and in
the set
"Room
What di
would b
"Turned
reply.
After
Saturday
found pa
MSC fo
the camp
of look
blocked
the Y.
Seems
sporting
in this s
happy a
fuming
finally
soon wa
khaki cl
Now th
lation as
with th
was just
was yell
Maybe
should
beat the