

SPORTS PLANT

By GARY ROLLINS
Battalion Sports Editor

Famine and drought pierced the once-glorious camp of the Maryland Terrapins last year. The pride of the East Coast took what everyone had to offer "right on the chin."

Their victories, both of them, came few and far between and rivals wreaked revenge on the Terps for past misdeeds. But that was last year, and minutes after the North Carolina game ended last fall, the entire Maryland squad took up a famous battle-cry, "Wait till next year!"

"Next year" arrives this Saturday, and if there ever was a team convinced they could win, it is the 1957 version of Coach Tommy Mont's Maryland Terrapins.

This will be the first game they have ever played against Texas A&M.

They'll be going against two All-Americans and the finest starting eleven in collegiate football.

If Maryland doesn't want to play rough football with plenty of gang-tackling, they'd better stay home in College Park, Md.

Down by Kyle Field, deep in the Brazos Valley, football is played as it should be; a hard-contact, clean type of contest that separates men from boys.

Those Terps have never heard of the Twelfth Man, or of that dread Fourth Quarter. Aggie lightning

struck three times in four minutes at Rice Stadium once upon a time, and dreams of grandeur were shattered.

Maryland has hopes of rebuilding their football tower that was once tallest in the nation, but unless they want this game more than the Aggies want the Cotton Bowl, they'd better look elsewhere for a happy beginning to their project.

The Terps have been hungry, but we've known hunger longer than anyone. Once Aggie grid-ders feel the soft, green grass in the Cotton Bowl, they'll want to return next January, for the first time since 1942.

Probable Starting Lineups

A&M	Maryland
LE—Marks—88	LE—Steppe—83
LT—Krueger—78	LT—Schwarz—76
LG—Stanley—60	LG—Tonetti—68
C—Gilbert—54	C—Alderton—51
RG—Brown—67	RG—R. Athey—61
RT—Beck—72	RT—Cole—75
RE—Tracy—80	RE—Scotti—82
QB—Osborne—12	QB—Lewis—12
LH—Crow—44	LH—Dare—21
FB—Gay—30	FB—Hatter—44
RH—Taylor—45	RH—Hamilton—40

Tigers Seek Second Win

Coach Dick Gardemal's CHS Tigers, seeking their second victory of the season, engage the twice-defeated Rockdale Tigers at 8 p.m. in Rockdale.

CHS has lost one game but their victory was in district competition and places them in the first position in District 23-AA.

Rockdale's losses, however, have been at the hands of AAA opponents. One defeat was 7-0 to Giddings and the other a 32-6 pasting by powerful Cameron.

Rockdale is the favorite on the basis of team speed with the two

clubs being about equal in other departments.

The Tigers' starting line will be composed of Don Avera, left end; Pete Rodriguez, left tackle; Benjie Jackson, left guard; Steadman Davis, center; David McNeely, right guard; Lyndon Harper, right tackle and Kirby Jackson, right end.

The starting backfield for CHS will find Edgar Feldman at quarterback; Dee Smith, left halfback; Alton Arnold, right halfback and Billy Kavanaugh, fullback. Kavanaugh is the largest man on the starting eleven at 170 pounds.

'Aggie' Murals Best Games Begin Monday

A&M's outstanding Intramural Athletic Program is once more underway under the direction of Barney Welch after an organizational meeting Wednesday in the YMCA.

Intramural captains met with Welch who outlined the program and explained the rules.

The A&M intramural program, one of the most outstanding in the country, involves a little better than 80% participation among members of the Corps with the percentage falling slightly for Civilians.

It is expected that about 250 games per team sport will be played this fall with a total of all games played to exceed 1500.

All entries in Class A, B, and C swimming are due in Monday with competition beginning on Monday, Sept. 30. Other entries with a Monday deadline are in Class B horseshoes, ping pong and football, and Class A basketball, tennis and bowling.

Team sports are to start on Monday, Oct. 7.

Students interested in officiating

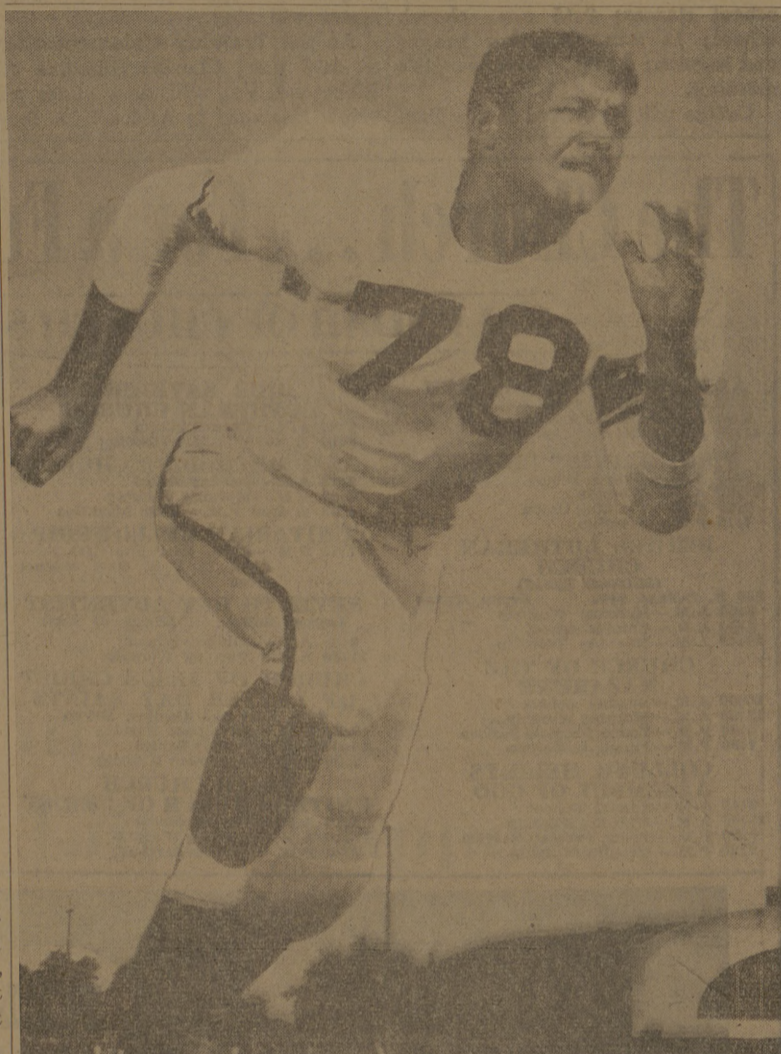
football and basketball games are urged to report to Welch as soon as possible. There is a dire need for officials. The pay is \$1 a game which amounts to about \$1 an hour.

Welch estimates that 110 teams will enter the swimming meet and entries will total over 1300. He also expects to have over 600 men compete in intramural cross country this fall.

For all interested in swimming, the Downs Natatorium will be open for intramural practice from 4-6 p.m. daily and 3-5 p.m. on weekends. Swimmers must have a rubber cap.

All athletic facilities are open to members of the student body and equipment such as basketballs, horseshoes, volley balls, etc., may be checked out at the Intramural Office in DeWare Field House and in White Coliseum.

Weightlifting facilities are available in White Coliseum along with three basketball courts on the second floor. The basketball court in DeWare is open when classes are not in progress. There are outdoor courts in the Grove which may be used. Handball courts are located behind DeWare.



Caldwell's All-American

Charley Krueger, 6-4, 220 pounds, an all-American as a junior, will start at left tackle for the Aggies against Maryland Saturday. Krueger is considered by Coach Carney Laslie as the best tackle since Bob Gain, Kentucky's all-America of 1950.

A&M Bowlers Club to Meet

The A&M Bowling Club will hold its first meeting of the year in the MSC Bowling Center at 7 p.m. Monday.

The purpose of the meeting is to explain the operation of the club to new members and to acquaint former members with plans for this year's activities. Interested freshmen will be interviewed during this period.

A school-wide tournament, open to all students, whether members of the club or not, will begin immediately following the meeting.

A&M MENS SHOP
103 MAIN — NORTH GATE
AGGIE OWNED

Details of the tourney will be explained at the meeting.

In the past, members of the club have done very well in various state and national tournaments. Last year at the national tournament at Fort Worth one of A&M's teams placed third in their division.

See **JOE FAULK** for —
● Furniture ● Auto Parts
● Hotpoint Appliances
● Dixie Range
● Mathes Air Conditioners
● Dearborn Heaters
● GE Small Appliances
214 N. Bryan
Cavitt at Coulter
JOE FAULK '32 — Owner

Ideal Laundry and Dry Cleaners

2613 Texas Avenue — Bryan

**SUB STATION—NORTH GATE
NEXT TO SHAFFER'S**

Phone TA 2-4434 or VI 6-6726

— One day service on request —

BATTALION CLASSIFIED

WANT AD RATES
One day 2¢ per word each additional day
Minimum charge—10¢
DEADLINES
5 p.m. day before publication
Classified Display
80¢ per column inch each insertion
PHONE VI 6-6415

FOR SALE

Suit, summer serge, boot pants, green shirt, pants. Call VI 6-6262 after 5 p.m. 1813

For TV's, furniture and appliances, contact Bill Wheeler, C-18-W College View, VI 6-5202. 1618

1957 Chevrolet 4-door hardtop. Low mileage, like new. Two tone green. TA 2-3368. 1813

Good used cornet. Call after 5 p.m. VI 6-5354. 1613

Harley Davidson 74, 1952. Excellent condition. Loaded with accessories. See at D-1-Z College View. 1514

Graflex, 4x5, \$60. Enlarger, Eastman 2 1/4 x 2 1/4, \$20. Will trade. VI 6-5270. 1514

By owner 3-bedroom home. 1570 square feet comfortable living area. Large lot, fenced backyard. Detached garage. College Hills location. Buy my equity \$1,604 and assume 4 per cent loan of \$7945. Total monthly payments \$61.00. 1015 Milner Dr. VI 6-5659. 1514

B-flat clarinet—silver plated. In good condition, with case and music lyre, \$30. VI 6-7203. 1514

Universal typewriter. See at State Motel, or call VI 6-5410. 1111n

BARGAINS

Screen Doors . . . Each	\$5.45
Masonite . per sheet	
4x8-1/2" Masonite . . .	2.24
Per Sheet	
4x8-1/2" Plywood	3.39
Per Sheet	
4x8-3/4" Plywood	4.48
Per Sheet	
4x8-1/2" Plywood	5.85
Per Sheet	
4x8-3/4" Plywood	6.72
Per Sheet	
Sherwin-Williams Paints	7.68
Super Kem-Tone & Kem Glo.	
10% DISCOUNT	

Cox Lumber Company
2705 South College Avenue

1951 Chevrolet sedan. R&H. Very clean, mechanically good. Car finance. VI 6-5409, C-14-X C.V. 1411n

PETS

German Shepherd puppies for sale. 1016 Walton Drive, College Station. 1411n

Dr. Carlton R. Lee

OPTOMETRIST
303A East 26th
Call TA 2-1662 for Appointment
(Across from Court House)

PROMPT RADIO SERVICE

Call —
SOSOLIK'S RADIO AND TV SERVICE
712 S. Main St.
(Across from Railroad Tower)
PHONE TA 2-1941 BRYAN

ENGINEERING AND ARCHITECTURAL SUPPLIES

● BLUE LINE PRINTS
● BLUE PRINTS ● PHOTOSTATS
SCOATES INDUSTRIES
603 Old Sulphur Springs Road
BRYAN, TEXAS

HELP WANTED

Experienced butcher for Saturday work, Food Town, 516 N. Main, Bryan, TA 3-8785, Mr. Oden. 1613

Hamburger cook at McLennan's Dairy Maid, 619 Highway 6 East, VI 6-6629. 763

Waitress wanted. Must be over 18. Experience not necessary. Apply in person between 10 and 5. Triangle Drive In. 2841n

Car hops wanted. Must be over 18. Apply in person between 10 and 5. Triangle Drive In. 2841n

Experienced child care; mother of two to care for one child in home. C-9-B C.V., Dorothy Basham. 1712

Experienced Aggie wife wants to keep child for working mother. 1500 S. College, Bryan. 1613

Child care in my home. Planned recreation. Hot noon meal. Second year of operations. References given. \$30 a month. Mrs. Coleman Dugat, C-3-D College View, phone VI 6-7454. 1514

Will keep children in my home—ages 2 1/2 or up. Mrs. W. R. Robertson, VI 6-4447. 1411n

Will babysit in my own home. Have experience and will give good care. Both husband and I love children. \$30 a month. Mrs. Amy Harmon, C-5-X College View. 1316

Will keep children in my home part or full time. Will be here for two years. Mrs. Clifford Mayben, Apt. B-9-C College View. 1011n

Neat, accurate typist desires typing to do in my home. Own electric typewriter. Call VI 6-5805.

Day nursery for working mothers. Call Mrs. Redding, VI 6-4892. 2711n

Accurate typist desires work at home. Thesis experience. VI 6-7265. 2551n

Kitchen remodeling, cupboard work, interior painting. VI 6-7285. 2581n

Experienced middle-aged woman teacher wants adult beginner piano students. Very reasonable rates. TA 2-1909. 1415

TOTS Kindergarten at 1102 Park Place now open for enrollment. Experienced and qualified teachers, individual attention stressed, enrollment limited. VI 6-5838. 1411n

Attention Aggie parents! Here is the nursery for your child. Good care, nice playground and reasonable rates. Come by and see us. You'll be glad you did. Weaver's Kiddieland Nursery, 225 Lynn Dr., Bryan, TA 2-6076. 911n

Supervised recreation, hot meals, fenced playground. 25¢ an hour. Tiny Tot Nursery, 2600 S. College, TA 2-8341. 611n

OFFICIAL NOTICES

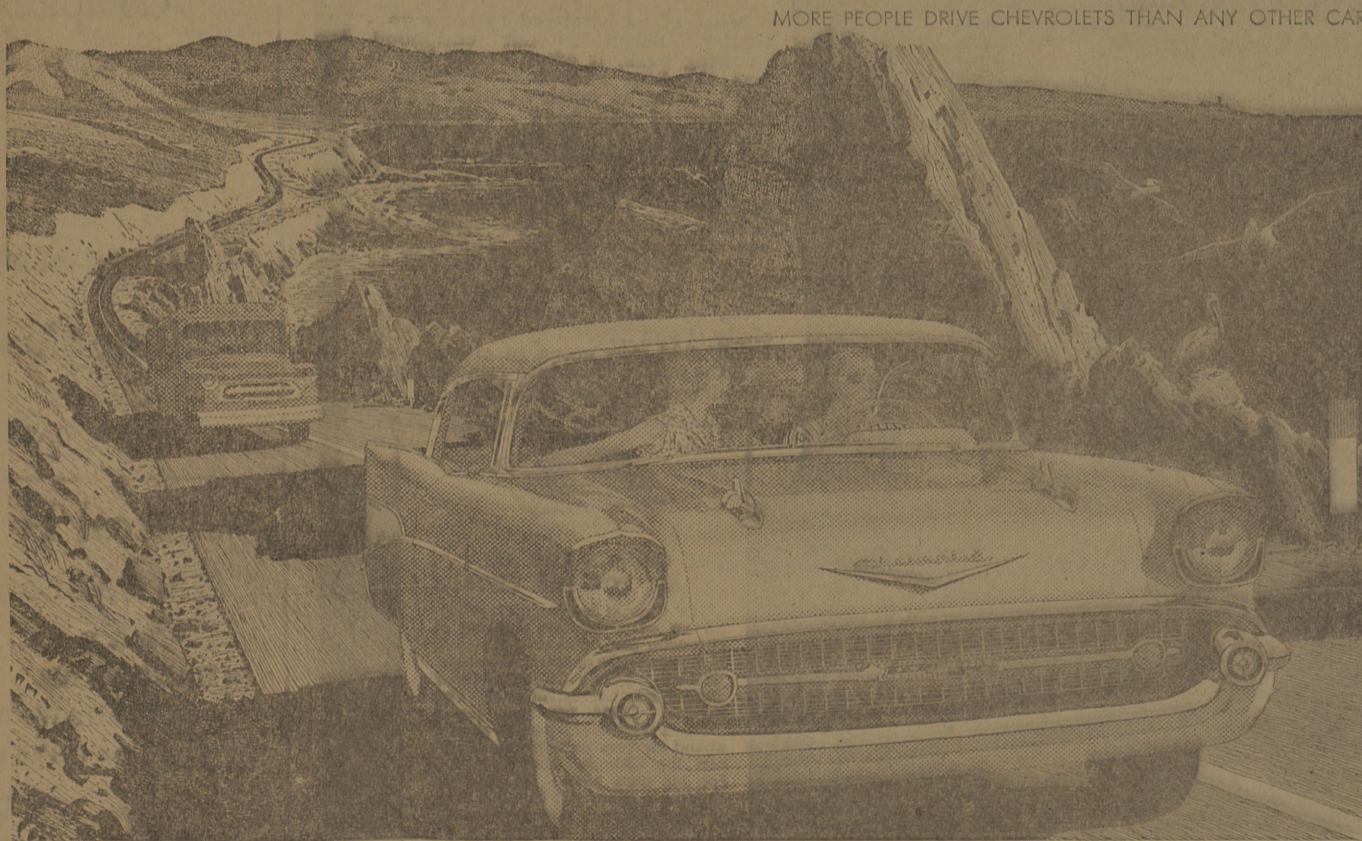
Official notices must be brought, mailed, or telephoned so as to arrive in the Office of Student Publications (Ground Floor YMCA, VI 6-6415, hours 8-12, 1-5, daily Monday through Friday) at or before the deadline of 1 p.m. of the day preceding publication — Director of Student Publications.

Changes in Registration
Changes in the list of courses for which any student is currently registered may be made only on the written recommendation of the head of each department concerned and with the approval of the dean of the student's school. A student may not add a course after Saturday, Sept. 21, 1957. Any course dropped after Saturday, Sept. 25, shall normally carry a grade of "F".
H. L. Heaton, Director of Admissions and Registrar

"THE OPEN DOOR TO HEALING"
WTAW (1150 kc.)
Tuesday 9:45 a.m.

EARLY BIRD SHOPPE
TOGS — GIFTS AND TOYS
for Girls and Boys
FABRICS — SHOES
Ridgecrest Village 3601 Texas Ave.

For Prompt Efficient Service
Dial TA 2-3840
1301 S. College
Gilmore Electric TV SERVICE



New Chevrolet Bel Air Sport Coupe with spunk to spare!

Great to have—and only Chevy's got 'em!

Chevrolet's the only leading low-priced car with any of these advances—the only car at any price with all of them!

BODY BY FISHER. You get more to be proud of in Chevrolet. No other low-priced car is quite so beautifully or substantially built down to the last detail.

SHORTEST STROKE V8. This helps explain Chevrolet's smooth and lively V8 ways. Short-stroke design also means less piston travel, longer engine life. Here's

super-efficient power with plenty of vim and vigor!

STANDARD BALL-RACE STEERING. Chevy's Ball-Race steering gear mechanism is virtually friction-free! That means easier parking, surer control, more relaxed driving.

POSITRACTION REAR AXLE. When one rear wheel slips in mud, snow or ice, the wheel with the traction grips for sure going!

TRIPLE-TURBINE TURBO-GLIDE. The silkiest automatic drive anywhere! You move from

standstill to top cruising speed in one gentle stream of motion. Special "Grade Retarder" position saves braking on hills.

P.S. Chevy's got the big "details," too! See all the exclusives at your Chevrolet dealer's!

*Optional at extra cost



GET A WINNING DEAL ON A NEW CHEVY—THE GETTING'S EXTRA GOOD!

Only franchised Chevrolet dealers **CHEVROLET** display this famous trademark

See Your Local Authorized Chevrolet Dealer