

er Larry Gayle Myers,  
ant and Squad Leader  
ader McWilliams, Staff

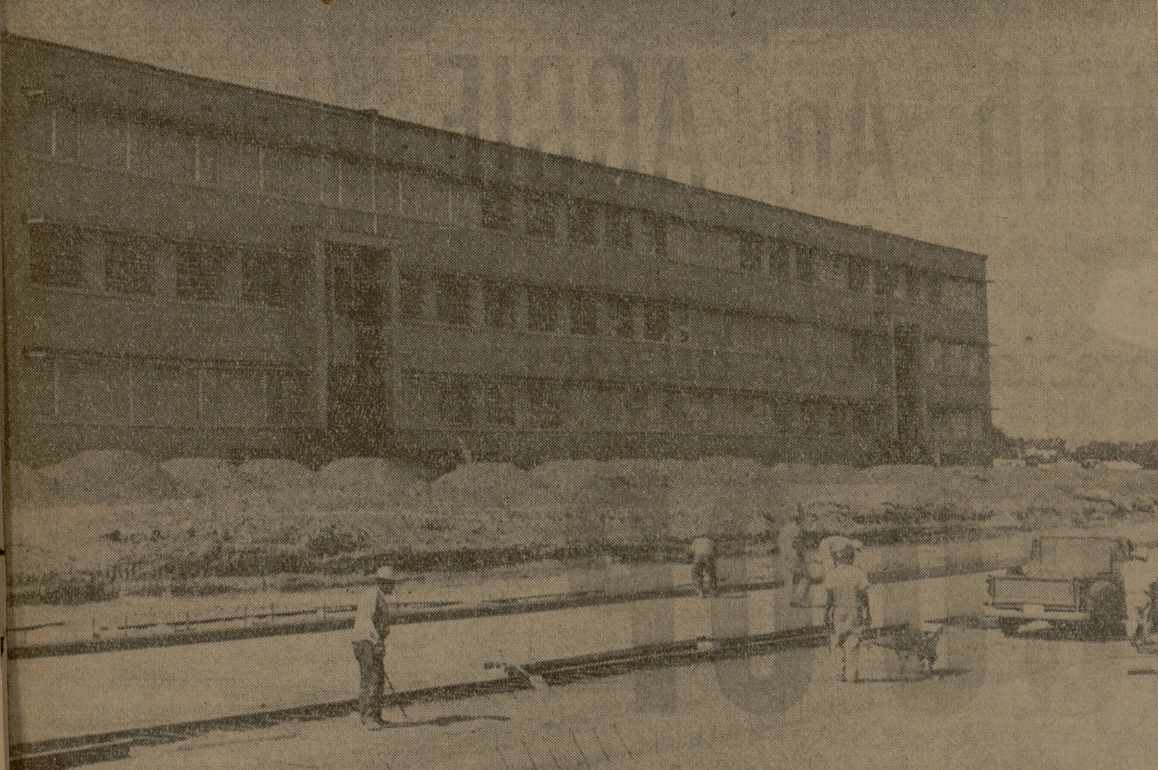
Squadron 15  
ing Officer Billy Rex  
tain; Executive Officer  
aniel Templin, 1st  
Scholastic Officer Jer-  
Gray, 1st Lieutenant;  
er Bobby Jack Melson,  
ant and First Sergeant  
Stewart, 1st Sergeant.  
arters Sixth Group  
Second Wing  
ing Officer Theron  
ep, Lieutenant Colonel;  
Officer Blanton Lee  
Major; S-1 (Adjutant)  
on Cunningham, Major;  
Scholastic) Thomas Nor-  
r, Major; S-4 (Supply)  
alvin Todd, Captain;  
ryce Sergeant James  
p, Technical Sergeant;  
Sergeant James Ward  
Technical Sergeant; Sup-  
tant Thomas Oliver  
chnical Sergeant and In-  
Sergeant John Olin  
chnical Sergeant.

Squadron 16  
ing Office William  
McCallum, Captain; Exe-  
cutive Shelby Louis Guidry,  
ant; Flight Commander  
rill, 1st Lieutenant;  
mmander Joe Raymond  
Lieutenant; Assistant  
mmander John Rodney  
Lieutenant; Scholastic  
William Robert Thurman,  
ant and First Sergeant  
p Dorsett, 1st Sergeant.

Squadron 17  
ing Officer Robert W.  
Captain; Executive Officer  
nk Hlavinka, 1st Lieuten-  
ant; Commander Charles  
inacht, 1st Lieutenant;  
mmander Darrell Clyde  
1st Lieutenant; Assistant  
mmander Dan Charles  
2nd Lieutenant and  
Sergeant David Lee Petty,  
nt.

Squadron 18  
ing Officer Baxter El-  
que, Captain; Executive  
Edmund Andrew Me-  
st Lieutenant; Flight  
r Bobby Raymond Pipes,  
ant; Flight Commander  
andolph Griffith, 1st  
; Scholastic Officer Jack  
Leach, 1st Lieutenant;  
Sergeant Richard John  
Sergeant and Flight  
Sergeant David Black,  
Sergeant.

arters Seventh Group,  
Second Wing  
ing Officer Arlen Don  
Lieutenant Colonel; Exe-  
cutive William Anton  
Major; S-1 (Adjutant)  
Francis Dowse, Major; S-2  
Scholastic) Raleigh Edwards  
Major; S-3 (Operations  
OFFICERS, Page 7)



A&M'S NEWEST BUILDING will house the office of the dean of Agriculture, the Biochemistry and Nutrition Department and the Creamery. A new street is being constructed to run in front of the building.

### OFFICERS

(Continued from Page 6)

& Safety) Robert Harry Stiteler,  
Major; Operations Sergeant James  
Austin Brady, Technical Sergeant  
and Supply Sergeant John Richard  
Johnson, Technical Sergeant.

#### Squadron 19

Commanding Officer Jimmie Roy  
Porter, Captain; Executive Officer  
Douglas Lee Campbell, 1st Lieuten-  
ant; Flight Commander Ira Her-  
man Oertling, 1st Lieutenant; Ath-  
letic Officer Harry Clifton Hamby,  
1st Lieutenant; Scholastic Officer  
Elmer Rex Isham, 1st Lieutenant;  
First Sergeant James Edward  
Freytag, 1st Sergeant; Flight  
Sergeant Donald Bullock Brown-  
ing, Technical Sergeant; Athletic  
Sergeant Albert Preston Payne,  
Staff Sergeant; Scholastic Serge-  
ant Milton Curtis Contella, Staff  
Sergeant; Assistant Squad  
Leader Allen Clarence Ludwig,  
Corporal and Assistant Squad  
Leader Terry Lee Thomas, Cor-  
poral.

#### Squadron 20

Commanding Officer Milton  
David Kingcaid, Captain; Executive  
Officer John Battiste Ferrara Jr.,  
1st Lieutenant; Flight Commander  
James Carrol Starr, 1st Lieutenant;  
Flight Commander Donald Upton

Oakes, 1st Lieutenant; Scholastic  
Officer George Claus Reoh, 1st  
Lieutenant; First Sergeant Robert  
Randall Carey, 1st Sergeant; Flight  
Sergeant Hubert Clarence Vykukal,  
Technical Sergeant; Supply Serge-  
ant Frank Wade Jordan, Technical  
Sergeant; Guide William Hotchkiss  
Peacock, Staff sergeant; Guidon  
Bearer William David Bunting Jr.,  
Corporal and Squadron Clerk John  
Ray Boyle, Corporal.

#### Squadron 21

Commanding Officer Stephen  
Bradley Cox, Captain; Executive  
Officer Charles Ray Cook, 1st  
Lieutenant; Flight Commander  
Floyd King Buckner, 1st Lieuten-  
ant; Flight Commander Paul Larry  
Harrington, 1st Lieutenant; Supply  
Officer Richard Andrew Chapman,  
1st Lieutenant; First Sergeant  
Bass Redd, 1st Sergeant; Guidon  
Bearer Hilry Leon Ranson, Cor-  
poral; Assistant Squad Leader Bob-  
by Lynn Thomas, Corporal; As-  
sistant Squad Leader William Eris  
Houchin, Corporal; Assistant Squad  
Leader Michael Erle Rawlings,  
Corporal; Assistant Squad Leader  
Arthur Donald Chase, Corporal;  
Assistant Squad Leader William  
Ansel Prewitt, Corporal; Assistant  
Squad Leader Barry Del Cum-  
mings, Corporal and Squadron  
Clerk Lonnie Benard Colvin, Cor-  
poral.

#### Squadron 22

Commanding Officer Carl R.  
Osborne, Captain; First Sergeant  
John A. Polk, 1st Sergeant; Flight  
Sergeant Allen G. Goehring, Tech-  
nical Sergeant; Flight Sergeant  
Leo Edward Wotipka, Technical  
Sergeant; Supply Sergeant John R.  
Steadman, Technical Sergeant;  
Athletic Sergeant Otie Carl Luna,  
Staff Sergeant; Scholastic Serge-  
ant Richard Gay, Staff Sergeant;  
Public Information Sergeant Thom-  
as V. Howard, Staff Sergeant;  
Squad Leader James J. McNichol,  
Staff Sergeant; Squad Leader Neil  
D. Swisher, Staff Sergeant; Squad  
Leader Luther Hall, Staff Serge-  
ant; Guidon Bearer Harold D. King,  
Corporal; Assistant Squad Leader  
Robert D. Yeates, Corporal; As-  
sistant Squad Leader Howard B.  
Payne, Corporal; Assistant Squad  
Leader Charles F. Milstead, Cor-  
poral; Assistant Squad Leader  
Bryon C. Caruthers, Corporal; As-  
sistant Squad Leader W. B. Darwin,  
Corporal; Assistant Squad Leader  
Albert F. Taylor, Corporal and  
Squadron Clerk Edward Thurman  
Neill, Corporal.

### Campus Has 798 Visitors In July

A total of 798 visitors were on  
the campus in August. For the  
months of June, July and August  
the total was 6,178, according to  
P. L. Downs Jr., official greeter  
for the college. The visitors attend-  
ed short courses, conferences, class  
reunions and other scheduled meet-  
ings.

PORT ALBERNI, B. C. (AP)—A  
sea turtle the size of a young heifer  
was trapped in a gillnet by fisher-  
man Pete Banman in Useless Inlet.  
It weighed 653 pounds and measur-  
ed 71 inches by 34 inches.

# Students Make Campus Safe

A&M has a safe campus, ac-  
cording to Fred Hickman, chief  
of Campus Security. This is made pos-  
sible not through our police force,  
but by combined efforts of both  
students and the Campus Security  
forces.

"Students are welcome to bring  
their cars to the campus but cer-  
tain procedures have to be observ-  
ed and certain regulations abided  
by", Hickman added.

College regulations provide stu-  
dents must register their vehicles  
(including motor scooters, etc.) at  
the Campus Security Office, locat-  
ed in the basement of the YMCA  
not later than 48 hours after ar-  
rival.

This pertains only to a car you  
plan to keep here with you. Reg-  
istration fee is \$2 per semester  
and registration will take place in  
September. You will be given a  
decals that should be placed on the  
right hand side of the car wind-  
shield.

#### Parking Decals

This decal will have a particu-  
lar color, depending on which area  
of the campus you live, and this  
color will indicate the parking lot

area in which you are to park your  
vehicle.

The different colors of the de-  
cals indicate the following park-  
ing areas: blue — day students'  
parking areas, red — dorms 1-12,  
brown — dorms 14-17 and Walton  
Hall, green—Law, Puryear, Mitch-  
ell and Leggett Halls, black—Hart,  
Bizzell and Milner Halls.

During business hours campus  
streets are adequate only for hand-  
ling of traffic necessary to col-  
lege business. These hours are 8  
a.m. to 5 p.m. Students' cars must  
be parked in their proper parking  
area by 2 a.m. Thus, between 5  
p.m. and 2 a.m., Monday through  
Saturday mornings, students can  
park their cars in areas usually re-  
served for business. Twelve noon  
Saturday until 2 a.m. Monday are  
also free parking periods. Stu-  
dents cannot drive cars to classes.  
They may use them for off-campus  
trips during classroom hours pro-  
vided no stops are made on the  
campus.

Texas laws governing traffic  
are effective at A&M. Speed lim-  
its are 20 and 30 mph, and are  
posted. PEDESTRIANS SHALL  
AT ALL TIMES HAVE THE  
RIGHT OF WAY, and at intervals  
between classes vehicular traffic is  
expected to stop for a sufficient  
period of time to allow pedestrians  
to cross drives and streets.

#### PORTABLE HOSPITALS

NEW YORK (AP)—The Federal  
Civil Defense Administration plans  
stockpiling fully-equipped portable  
hospitals.

By 1962, a total of 6,000 such  
units may be available to provide  
emergency aid to as many as 2.5  
million victims in the event of a  
major natural disaster or an enemy  
air attack.

These van-transported emerg-  
ency hospitals, equipped to handle  
200 bed patients at a time, are  
being distributed throughout the  
U.S.

Steelways, official publication of  
American Iron and Steel Institute,  
said that the portable facilities and  
supplies can turn a pre-selected  
empty school or church into a  
hospital within four hours, com-  
plete with its own water, power  
and light, three operating rooms,  
an X-ray room, a sterilizing room,  
a reception and sorting room,  
laboratory, a pharmacy and medical  
needs sufficient to last 36 to 48  
hours.

hours to redeem the driving per-  
mit without an additional fine be-  
ing added.

At the bottom of every ticket  
issued will be instructions on how  
you may go about getting your  
car reinstated and the procedure  
and place to go. If the driver  
thinks the ticket is unwarranted  
he should report to the Campus  
Security Office where notice of ap-  
peal may be prepared.

#### Appeal Court

The court appeal is to be open  
from 4 to 6 p.m. in the Student  
Loan Office, with Col. E. F. Sauer,  
student labor and loans director,  
as appeal authority. Sauer's de-  
cisions on appeal cases will be  
based on the circumstances under  
which violations occurred.

Should a student lose his appeal  
or if he does not appeal, he must  
pay the fee to get his driving  
right restored. If he wins his case,  
his ticket will be torn up.

The fee is technically not a fine,  
for the student does not have to  
pay it unless he wants his driving  
privileges on the campus restored.  
A larger fee will be assessed if a  
student drives his car on the  
campus without first getting his

permit back, either by paying the  
violations fee or by winning his  
appeal to the traffic officer. Fur-  
ther violations may cause the case  
to become a matter for disciplin-  
ary action.

#### Money Question

The question every student  
wants to know is, "Where does  
the money go that is taken in as  
reinstatement fees?"

The answer is very simple and  
important. According to Hickman,  
every cent taken in under this pro-  
gram is used to improve and make  
available more adequate parking  
lots for the students. This is the  
reason for the hike in registration  
and reinstatement fees.

When you register your car,  
you will be given a pamphlet of  
the traffic rules. BE SURE TO  
READ EVERY LINE. You can  
help yourself and the college at the  
same time.

**A&M MENS SHOP**  
103 MAIN — NORTH GATE  
**AGGIE OWNED**

**HOWDY PARTNER  
WELCOME BACK**  
From All the Gang at  
**HALSELL MOTOR CO., INC.**  
1411 Texas Ave. TA 2-3784  
VISIT OUR NEW MODERN SHOWROOM  
AND SERVICE DEPARTMENT  
See the  
**"SWEPT-WING" DODGE**  
and  
**THE "1960 NEW" PLYMOUTH**  
COME IN SOON!

## Shop Center

See our nice  
selection of  
League

- SLACKS
- SPORT COATS
- SPORT SHIRTS

es and colors...  
and  
ed Right Too!

s Welcomed

## Shop

North Gate

### IMPROVE YOUR GRADES

We have a limited quantity (2000) of the miniature  
edition of "BEST METHODS OF STUDY". This is an  
exact miniature replica of College Outline Series No. 28  
which retails for \$1.00.

A copy is yours for the asking so long as they last.

### THE EXCHANGE STORE

"In Its 50th Year of Serving Texas Aggies"

## Welcome Neighbor

You'll find what you want at Caldwell's . . . the finest in  
watches, silverware and other finery . . . at prices you can  
afford. There will be special days ahead . . . we have just  
the thing for Mom, Pop, brother or sister. Or if you're think-  
ing of your best girl, you'll find the beautiful and economical  
. . . at Caldwell's.

Diamonds - Watches - Silverware

Expert Watch and Jewelry Repair

## Caldwell's JEWELRY STORE

112 North Main Bryan  
Phone TA 2-2435

# YOU GOTTA BUY



OMETHING  
OME PLACE  
OME TIME  
OME HOW  
EE OLE LOU

BEFORE YOU DO!!

# LOUPOT'S

For Your Convenience, We Will Be Open After Church On Sunday