

Texas Reclamation Project Proposed

WASHINGTON, (AP)—The administration yesterday recommended that Congress authorize federal construction of the proposed \$32,220,000 San Angelo Reclamation Project in Texas.

Asst. Secretary of the interior Fred G. Aandahl made his report to the House, where a bill is pending similar to one already passed by the Senate.

Aandahl also submitted a Reclamation Bureau report which says the project is feasible. That report has been reviewed by interested state and federal agencies. Reclamation commissioner W. A. Dexheimer said the proposed development, in the upper reaches of the Colorado River basin in Texas, would provide an important new water supply for urban and industrial expansion near San Angelo. It also would support irrigation of 10,000 acres of agricultural land on the Lipan Flat east of the city, he said, and would "make a major contribution to recreation, fish and wildlife, and flood control."

Dexheimer said the San Angelo area is in need of additional water supplies because of increased demands, general rainfall deficiency, and periods of extreme drought. San Angelo was the first stop made by President Eisenhower on his January drought tour of the Southwest.

The commissioner said rains are sporadic but heavy and constitute a continuing flood menace to the city and other areas downstream from the proposed development.

Range Club Schedules Barbecue

"Range Olympics" will highlight this year's annual Range and Forestry barbecue to be held Saturday at 2 p.m. in the Easterwood Airport picnic area, according to Don Huss, Range and Forestry Club sponsor.

The "Olympics" will be made up of two teams. One made up of freshmen and sophomore and the other graduates, seniors and juniors. The two teams will fight it out in such events as baseball, volleyball, horseshoes, cracker-chewing and tug-of-war contests and three legged and potato sack races.

Points will be given for each contest and the team which gets the greatest number of total points will win the contest trophy.

"We hope to make the 'Olympics' an annual event," Huss said.

At the conclusion of the matches, a goat barbecue will be served. Wives and dates of club members are invited to attend the outing, he said.

LEE RIDERS

100% GUARANTEED AGAINST SHRINKAGE

LOUPOT'S

At Your Leisure Best!

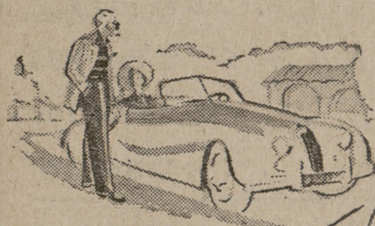
NO MATTER WHERE YOU GO... YOUR

TRIEST Slacks

ARE IN GOOD TASTE!

TAILORED BY Lissner

Time was when a man wore slacks only "pour le sport." Now, the superb tailoring, luxury fabrics, exciting colors of fine Quality Slacks by Lissner, make them acceptable anywhere, anytime. Mix or match them with your favorite jackets or smart shirts. \$10.95



The Exchange Store

"Serving Texas Aggies"

SPECIALS FOR THUR.-FRI.-SAT. APRIL 11-12-13



"ORR'S GOLD SEAL VEAL SALE"

SHOULDER STEAK	Gold Seal Veal	lb.	43c
RIB STEW MEAT	Gold Seal Veal	lb.	25c
RIB CHOPS	Orr's Gold Seal Veal	lb.	55c
HAMBURGER	Always Fresh	lb. 29c 3 lbs.	85c
TURKEYS	Armour's Star (8 to 14 Lb. Size)	lb.	49c
BACON	Swift Premium	lb.	59c
CORNED BEEF	Swift Premium	lb.	59c
Lamb Shoulder Roast	Swift Premium	lb.	49c
CHEESE	Wisconsin State	lb.	49c
OYSTERS	Fresh Selects	pt.	89c

SUGAR

Imperial Pure Cane

5 lb. bag 35c

Lilly—Trim—Square Cartons—½ Gal.	MELLORINE	49c	Giant Size—Colgate TOOTH PASTE	39c
24-Oz. Pkg.—Jeans Frozen CLOVERLEAF ROLLS	35c	Best Maid SALAD DRESSING	qt.	39c
8-Oz. Pkg.—Birdseye Frozen FISH BITES	29c	303 Cans—Del Monte FRUIT COCKTAIL	2 cans	45c
10-Oz. Pkg.—Gulfstream Frozen BREADED SHRIMP	55c	303 Cans—Del Monte GREEN LIMAS	2 cans	49c
11-Oz. Pkgs.—Birdseye Frozen LEAF SPINACH	2 pkgs.	35c	Long Grain ADOLPHUS RICE	2 lb. box 29c

GOLDEN AGE BEVERAGE

Quart Plus Deposit

10c

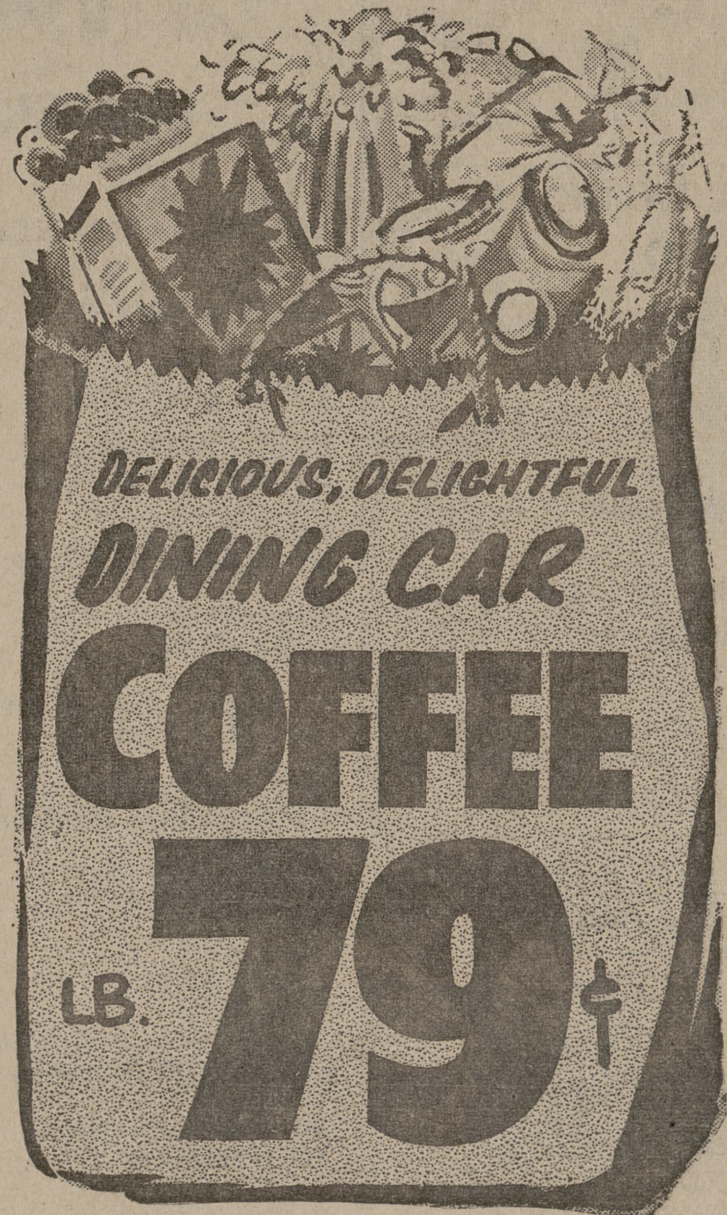
REGISTER FOR FREE PRIZES

- TELEVISION
- BICYCLE
- WATCH

SEE DETAILS INSIDE ORR'S STORES

PASCO ORANGE JUICE

Fresh Frozen 2 6-oz. cans 25c



SWINDLER'S Grade A Lge.

EGGS

Doz. 45c

Home Permanents
 LILT or TONI
 Your Choice EACH \$1.69

California White

Potatoes 10 Pound Bag 33c

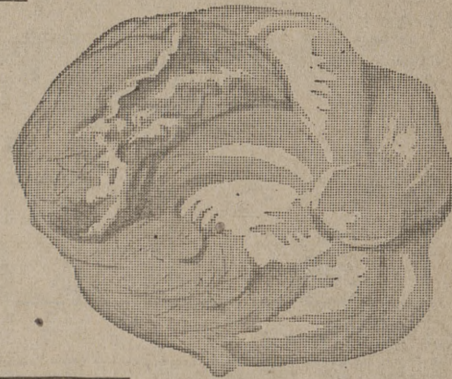


ORANGES Sweet Florida 5 Lbs. Bulk 39c

CELERY Fresh Large Stalk 10c

FRESH CRISP

LETTUCE Big Head 9c



★ TWO CONVENIENT LOCATIONS ★

SUPER ORR'S MARKETS

BEST IN BRYAN

200 E. 24TH ST.

3516 TEXAS AVE.