

Okamoto Wins 1500 As Texas Takes Lead

A&M's brilliant Tetsuo Okamoto captured his second consecutive 1500-meter freestyle in the opening event of the 1957 Southwest Conference swimming meet last night in Houston.

Okamoto, the Sao Paulo, Brazil, junior, finished just ahead of the

University of Texas' Eddie Johnson in the comparatively slow time of 19:40.0. Okamoto holds the conference record, 19:21.6, set in 1956.

Texas, with three men placing behind Okamoto, took the team lead for one event.

Today's schedule calls for preliminaries in the 200-yard butterfly, 50-yard freestyle, 200-yard backstroke, 220-yard freestyle, 100-yard breaststroke, low diving and the 200-yard individual medley at 2 p. m. with the finals slated to get underway at 8. The only final in the afternoon will be the 400-yard freestyle relay.

On tap for tomorrow's wind-up sessions are the 100-yard butterfly, 100-yard freestyle, 200-yard breaststroke, 100-yard backstroke, 440-yard freestyle, high diving and 400-yard medley relay.

Krebs Battles Chamberlain In NCAA Regional Tonite

DALLAS.—The Western Regional, with more top ranking teams than any of the sectional NCAA basketball play-offs, goes on here tonight with interest pinpointed on the clash of mighty Kansas and Southern Methodist.

At 9:30 p. m. Kansas, ranked No. 2, and Southern Methodist, No. 4, get together. This will project the outstanding individual duel in the nation in the meeting of Wilt (The Stilt) Chamberlain, the 7-foot wizard of Kansas, and Jim Krebs, the 6-foot-8 center of Southern Methodist, who is regarded as the finest player the Southwest Conference has produced.

Lured to the SMU Coliseum by SMU's great team, that has rolled up a season record of 21-3, and to

see the mighty Chamberlain, a man who is terrific on offense but does more damage to the opposition with his treetop reach on defense, sell-out crowds of 7,600 will be on hand.

It will be Southern Methodist's third straight try for the NCAA championship. The Mustangs failed in 1955 but got to the national semi-finals last year.

Southern Methodist has played Kansas 11 times over the years, winning only twice. But the last time was in 1956 when the Methodists tripped the Jayhawks on the SMU home court 81-61. But that was the little bandbox gym that gave away this year to SMU's magnificent coliseum. It was because of this fine court that SMU was awarded the NCAA regional.

All Confusion As 20-Second Rule Enforced

ST. PETERSBURG, Fla.—(AP)—Baseball's new 20-second rule was introduced here Thursday—and all was confusion.

The umpire lost the count, pitcher Herman Wehmeier of the St. Louis Cardinals lost his temper, and the Cardinals lost the game.

The rule was put into effect this year in an effort to speed up the game. It provides specifically that a pitcher must not use up more than 20 seconds from the time he receives the ball from the catcher until the moment he delivers the ball back to the catcher.

Wehmeier was pitching to Gus Zernial of the Kansas City Athletics. The count was two balls and a strike. Wehmeier was about to make the next pitch. Zernial stepped out of the batter's box to wipe his forehead.

The umpire, behind the plate, called "ball" enforcing the rule.

Wehmeier's red face turned even redder. Cardinal Manager Fred Hutchinson failed to hear the umpire's call but, sensing something was wrong, he asked Dixon what the count was. Two balls and a strike, Dixon replied.

Catcher Hal Smith and others agreed later the count was two-and-one before Dixon enforced the rule. The umpire said he had thought it was one-and-one. Thus Hutchinson still wasn't aware the rule had been enforced as the game proceeded.



WAITING FOR COURTS — are (left to right) Don Schultze, Glenn Eubank and Warren McCoy trying to get in a game of handball on one of A&M's five courts.

Ag Nine Meets Bulldogs

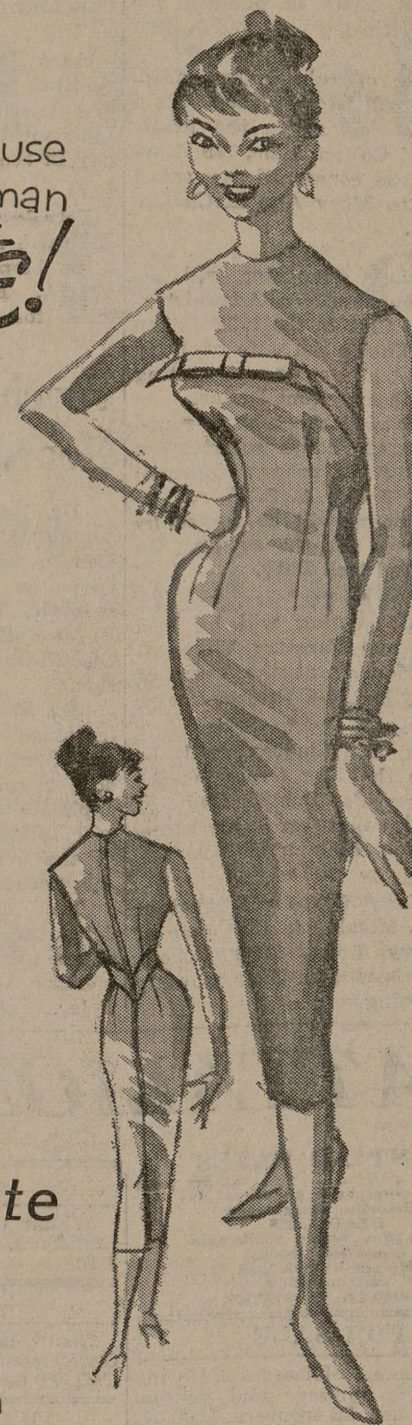
Hoping to even their 1957 season record at 2-2, A&M's baseballers move to Seguin tomorrow to battle the Texas Lutheran Bulldogs at 2 p. m.

The Aggies of Coach Beau Bell split a doubleheader with these

same Lutherans Wednesday on Kyle Field, losing the opener in 10 innings, 6-4, and taking a 4½-frame nightcap, 4-3.

Coach Bell will probably start Captain Dick Munday, Bryan's ace righthander on the mound.

because you're a woman with taste!



Choose this completely washable, linen weave rayon sleeveless sheath. Banding above the empire bustline is accented with a tailored bow.

PASTEL COLORS.

\$8.95

Collegiate Shop

113 N. Main

TYPEWRITERS

"All Styles of Type in Stock"

Sales, Service, Rentals, Terms
All Brand Portables

featuring

Olympia

BRYAN BUSINESS MACHINE CO.

429 So. Main
Bryan

Ask about our RENTAL PURCHASE PLAN

(Up to 3 mo. rent payable on new typewriter.)

THIS COUPON WORTH \$10.00

on any NEW STANDARD TYPEWRITER

NOW... for the Finest Quality Glasses and Complete Optometric Service
Visit TSO in BRYAN...

CENTRALLY LOCATED TO SERVE YOU

ROOM No. 501

VARISCO BUILDING
(Directly over J. C. Penney's)

Finest Quality \$20 Value SINGLE VISION GLASSES \$13.85 WEAR WHILE YOU PAY \$1 WEEKLY Satisfaction guaranteed

PRECISION VISION SINCE 1935
Texas State OPTICAL

At Texas State Optical You Get These Guaranteed Services

- A thorough, scientific eye examination from an experienced Doctor of Optometry
- Precision lenses ground to individual requirements
- Largest and latest selection of frame styles and colors
- Easiest credit terms if desired

Directed by Dr. S. J. Rogers, Dr. N. Jay Rogers, Optometrists
ROOM No. 501
VARISCO BUILDING
IN BRYAN

See "The Tracer" Wednesday, 7:30-8 p. m., KWTX-TV, Channel 10

CHOICE SETTING FOR A DATE!



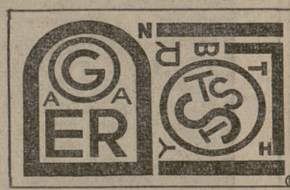
Whatever the occasion, we're on your side with the Best of Food.

WEHRMAN'S CAFE

1009 W. 25th

Bryan

HERE IS THE FINAL TIE BREAKER IN OLD GOLD'S



TIE-BREAKING PUZZLE NO. 8

CLUE: This Nebraska coeducational college of liberal arts is affiliated with the Presbyterian Church. It was chartered and opened in 1882.

CLUE: Conducted by the Jesuit Fathers, this midwestern coeducational university was opened in 1877. It bears the name of the city in which it is located.

CLUE: This coeducational university was chartered in 1845 under the Republic of Texas. It is a Baptist school.

ANSWER 1. _____
ANSWER 2. _____
ANSWER 3. _____

Name _____
Address _____
City _____ State _____
College _____

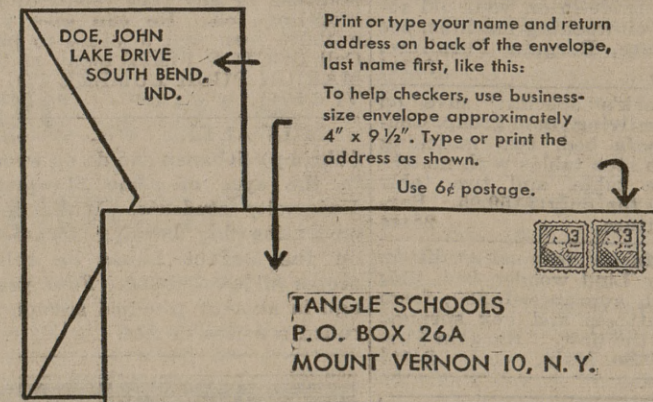
NOTE THAT THE ABOVE PUZZLE CONTAINS THE NAMES OF THREE SCHOOLS FOR WHICH THREE SEPARATE CLUES ARE GIVEN.

Players may now mail their completed sets of 8 Tie-Breakers. Before mailing your puzzles, keep an accurate record of your answers. The 8 Tie-Breakers must be answered, neatly trimmed, and enclosed in an envelope, flat and not rolled and addressed to: Tangle Schools, P. O. Box 26A, Mount Vernon 10, N. Y., and bearing a postmark not later than April 5, 1957. Do not decorate or embellish the puzzles in any way. Do not include anything in the envelope but the puzzles.

If, after solutions have been submitted to this set of Tie-Breakers, a tie or ties still remain, those tied will be required to solve another tie-breaking puzzle, in accordance with the official Tangle Schools rules. These tie-breaking puzzles, if necessary, will be mailed to each contestant.

TANGLE SCHOOLS PUZZLES

FOLLOW THESE MAILING INSTRUCTIONS CAREFULLY!



- Use business-size envelope 4" x 9½" ... sometimes referred to as a No. 10 envelope.
- Each of the puzzles must be neatly trimmed, separately, and placed in numerical order.
- No decorations please! Address envelope as shown.
- Your name and address MUST be on the BACK of the envelope ACROSS THE END and in the position shown in the illustration. Please print or type in CAPITAL LETTERS—LAST NAME FIRST. If mailed according to instructions, 6¢ postage should be enough.
- In the event of further ties, contestants will be mailed an additional tie-breaking puzzle form.

REMEMBER—ENTRIES MUST BE POSTMARKED NO LATER THAN FRIDAY, APRIL 5, 1957.

FIRST PRIZE—A TOUR OF THE WORLD FOR TWO—OR \$5,000 CASH! EIGHTY-FIVE OTHER VALUABLE PRIZES!



Cop. 1957 Harry H. Hollister