

# ies, Gym

most unbeatable on Texas conquered SMU Mustangs conference loss early in Gregory, then ding champions in

ounced the Steers, in White Collect a somewhat row night. Coach crew are 6-16 on 2-8 in conference Texas five stand ar and one notch as in the league 3-6 mark.

EM's George Me-great Ray Downs scored 23 points victory here, but ad 464 points so ehaffey's 300.

ine sophomores—rnie Turner and have been doing ring in the past haffey was injur- as contest and has efficiency since. against SMU in

# ittens ge Pair

ed Junior High ends of a double-Navasota Fangs games of the in Tiger Gym.

l of the regula- the Kitten "A" bounced the visi- a their younger d the Fang "B"

, who paced the with 16 points, p shots and Joe he scoring with while the Fangs ee throw in the

rebounced the 40. At one time, period, the CHS but the visitors the end of the

# Depth, Middle Strength Major Grid Concern As Aggs Open Practice

By JIM CARRELL

"Depth at every position and strength down the middle" says Coach Paul "Bear" Bryant, "are weaknesses that must be remedied", when the 1956 Southwest Conference football champion Texas Aggies open Spring practice Monday.

Greatest losses to the Aggies are in the middle of the line, at center and guard and the fullback slot in the backfield.

Graduation of guards Dee Powell and Dennis Goehring and center Lloyd Hale weakened the Cadet forward wall with losses of All-American fullback Jack Pardee and George Gillar, tabbed by Bryant at the end of the season as "the finest ball-carrier in the conference", hampering an otherwise experienced backfield.

Candidates for the 1957 varsity will come from 19 lettermen off last year's squad and a "so-so" freshman squad that won one and lost four.

Abundance of quarterbacks resolves a major problem of a year ago with the return of capable man-unders in all-conference Roddy Osborne, Jimmy Wright and Bobby Conrad, who doubles as a halfback.

Loss of the top men up front in the line, according to Bryant, will necessitate that the quarterbacking be "much more sound and consistent".

To replace the formidable Pardee and Gillar at fullback only letterman Richard Gay returns. But by many "Little Richard" is regarded as "more than able" to rtp into the slot left vacant by his distinguished predecessors. Gay, a 5-11, 190-pounder from Shreveport, La., impresses with excellent defensive credentials, and is a fine ball-carrier and blocker to boot.

All-American candidate John Crow of Spring Hill, La., and Loyd Taylor of Roswell, N. Mex., two-year lettermen at their respective left and right halfback positions leave little to be desired either on offense or defense, except suitable

replacements. Other than the three quarterbacks only halfback Carlos Esquivel of Edinburg is a returning letterman.

Left tackle Charles Kreuger, 220-pound all-American from Caldwell; left end Bobby Marks, 190-pounder from New Orleans and right end John Tracey, 215-pounder of Philadelphia are returning starters from the forward wall which led Texas A&M to its first conference championship since 1941 and first undefeated season since 1939.

Other returning lettermen in the line include guard Murry Trimble, Hanceville, Ala.; guard Jim Langston, Texas City; guard Tommy Howard, Galveston; tackle Jim Stanley, Lynch, Ky.; tackle Ken Beck, Minden, La.; center John Gilbert, Russellville, Ark.; guard Harold Price, Comanche; tackle A. L. Simmons, San Antonio and end Don Smith, Phillips.

"Our freshmen will have to help us", Bryant stated. "They were not impressive last fall in contact and speed. They'll have to bow their necks this spring," he added.

Coach Bryant lists as most impressive among the freshman, quarterback Charles Milstead of Tyler, halfback Henry Colwell, a 5-10, 170-pounder from Abilene, end Ed Neill, a 6-3, 182-pounder of Port Lavaca and guard Albert Taylor, a 5-10, 210-pounder of Harlingen.

Milstead, 6-2 and 185 pounds, an all stater in high school and freshman quarterback last fall is a top-rated prospect at that position. Milstead runs the option play with finesse, is a fine passer and punter and plays a sound defensive game at linebacker.

Colwell, a halfback from the 1955 state champion Abilene team, commands attention on the basis of his performance on defense and is a gifted ball-carrier. Taylor was regarded as one of the quickest and most aggressive linemen on the 1956 freshman squad.

Other strong contenders expected from the freshman team are

Gordon LeBeouf, halfback from Port Neches; Gale Oliver, tackle from Refugio and Larry Ward, end at Nederland high school, switched to center as a freshman.

Three new Aggie assistant coaches will be on hand for the spring training. They are Carney Laslie, assistant head coach and recent line coach under Earl Blaik at West Point; J. T. King, former line coach at Texas, and A. O. "Bum" Phillips, former head coach at Nederland high school.

They will join the holdover assistants: Phil Cutchin, Elmer Smith, Pat James, Sam Bailey and Willie Zapalac.



ACE PORT-SIDE HURLER—Galveston's Toby Newton, all-Southwest Conference pitcher in 1956 as a sophomore. Newton had a 3-4 record, but struck out 76 batters in 64 2/3 innings with a 3.0 ERA. —Photo by Chuck McCain.

# Ken Hall at Houston U; Declines Owens' Bid

Kenneth Hall, who dropped out of A&M suddenly last fall after the Baylor game, has enrolled in the University of Houston for the Spring semester.

Contacted by THE BATTALION at his home in Sugarland last night by phone, Hall said he definitely would not play any football at the Houston school, but "might run track next year. I haven't talked to anyone about that yet."

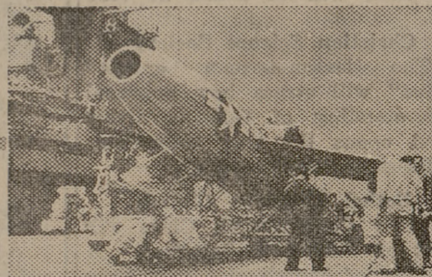
Hall, a 6-2, 210-pound fullback and one of the nation's most highly-sought athletes upon his graduation from Sugarland High School in the Spring of 1954, revealed that ex-Aggie assistant coach Jim Owens, now head man at the University of Washington, approached Kenneth and wanted to take him to the coast. Hall declined when he discovered that he would be eligible only one season

in the Pacific Coast Conference. A high school star who broke all existing Texas scoring records in his four-year career, Hall was a standout on the '54 Fish team that captured the Southwest Conference Frosh title and was a second-string fullback on the 1955 Squad before dropping out for A&M's 19-16 victory over TCU.

**Want to help a Buddy?**  
**HERE'S HOW . . .**  
Some Aggies need this book now!  
**ME 327**  
(Going out of print)  
**LOUPOT'S TRADING POST**



Flight Test Engineer



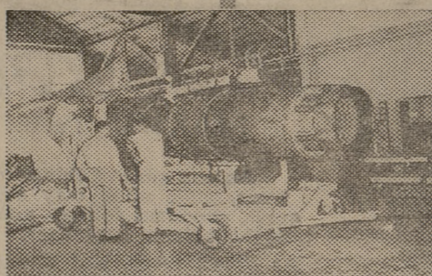
Project Engineer, Missiles



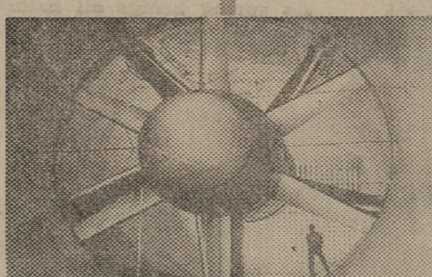
Project Engineer, Fighters



Electronics Engineer

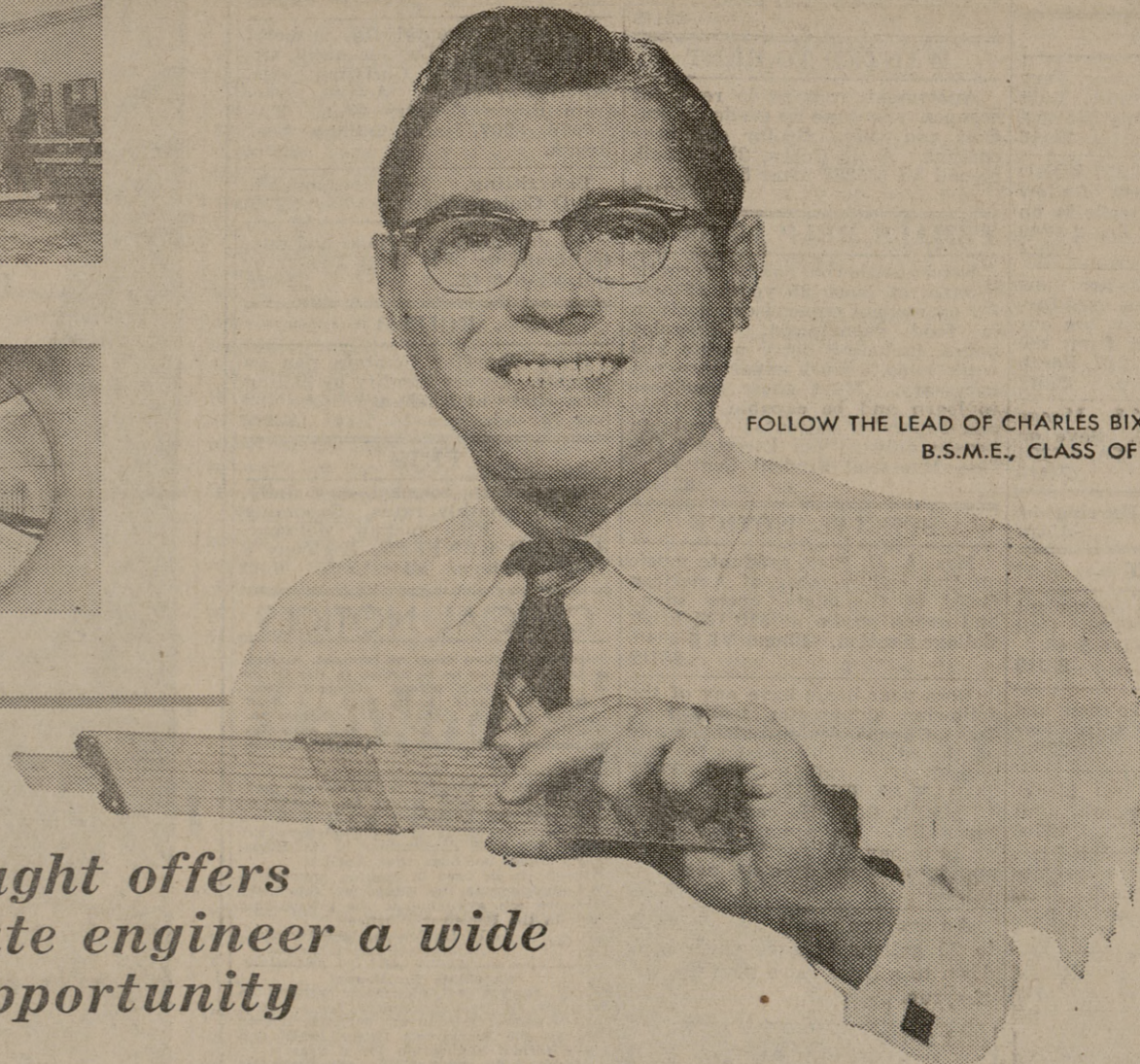


Propulsion Engineer



Aerodynamics Engineer

*In which one of these fields of Engineering would you do your best work?*



FOLLOW THE LEAD OF CHARLES BIXLER  
B.S.M.E., CLASS OF '51

**Chance Vought offers the graduate engineer a wide range of opportunity**

CHUCK BIXLER knows how *variety* helps the young engineer find a career field that suits him best. In Chance Vought's missile and fighter activities, he discovered every specialty he'd considered in school. He found others he hadn't known existed. Vought measured him for all these fields, and together they selected a perfect fit: structures and preliminary design work, where Chuck has advanced to lead engineer in about five years time. The same variety can be found at Vought by graduates from every field of academic training. Electrical, civil, mechanical and aeronautical engineers alike find a rich selection of avenues for growth. Moreover, they find the guidance they need to make a wise choice. Chuck, for example, was selected for Chance Vought's nine-month program of job rotation. After working in six different groups he gained a backlog of experience

that has since proved invaluable. Frank counseling, a versatile, growing company—everything that helped Chuck can help you. As a starter, ask our campus representative to point out the specialties you're qualified to enter. (You'll be surprised at the length of the list.) Your Placement Office can arrange your appointment. Or you may write for immediate information to Mr. C. A. Besio, Supervisor, Engineering Personnel Dept. CN-3, Chance Vought Aircraft, Incorporated, Dallas, Texas.

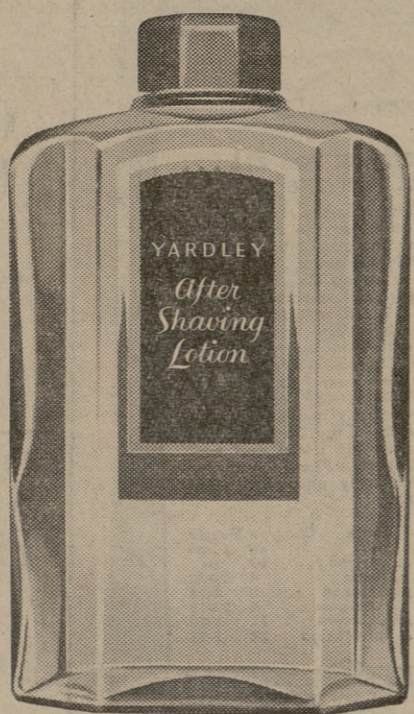
Our representative will be in your Placement Office Monday and Tuesday, February 25 and 26, to describe the Chance Vought's program for young engineers. Reserve time for your own interview by making your appointment today.

**CHANCE VUGHT AIRCRAFT**  
INCORPORATED • DALLAS, TEXAS

By appointment purveyors of soap to the late King George VI, Yardley & Co., Ltd., London

**THIS AFTER SHAVE LOTION  
CONDITIONS YOUR FACE, TOO**

Invigorates and softens the skin; soothes razor burn after any shave, electric or lather . . . \$1.10, plus tax.



**YARDLEY OF LONDON, INC.**

Yardley products for America are created in England and finished in the U.S.A. from the original English formulae, combining imported and domestic ingredients. 620 Fifth Ave., N.Y.C.

YARDLEY PRODUCTS MAY BE SECURED AT  
**ELLISON PHARMACY**  
YOUR REXALL STORE  
College Station and Bryan