

Letters to the Editor

Editor,
 The Battalion:
 If possible will you please answer the following questions in Wednesday's Battalion?

1. The college medical fee amounts to \$130,000 to \$140,000 per year (\$10 per student per semester). If a student slips on the stairs in the Academic Building and breaks a leg, will the college hospital absorb the medical cost from the medical fees or will the cost be paid by the insurance company? If the cost is paid by the insurance company, why the \$10 medical fee? Just how will the college hospital benefit from this policy?

2. If the rate is raised after the two year policy expires, will the policy still be compulsory or will there be another student vote?

3. It has been stated that the policy will pay regardless of another policy. True, but will other policies held by students pay regardless of the school policy?

4. Some specific situations:
 a. Does the policy cover students during bonfire week who are working away from the campus?
 b. Will the policy cover students of College View and Bryan while at home and enroute to and from college?
 c. Does the policy cover students participating in intramurals?
 Don H. Davis '56
 Ronald G. Gardner '56
 (Ed. Note: Definite answers cannot be given since the actual policy has not been drafted.)

INSURANCE

(Continued From Page 1)
 don't file claim with the student's other policy".

Dr. Robert M. Stevenson, of the Business administration department says there are three types of accidental insurance policies, Sen. Ross said.

The three are:
 1. The type that pays regardless if another company pays.
 2. The type that pays in proportion to the relative value of the two policies.
 3. The type that will not pay if claim is filed with another policy.
 So it is entirely dependent on the type of policy a person has as to whether a person will be paying for insurance that will not benefit him.

Four Additional RE Week Dorm Group Leaders Named

By JOE BUSER

A&M's 15th annual Religious Emphasis Week, which begins Feb. 18, will have 18 ministers living on the campus conducting forums and discussion groups for dormitory students and faculty.



Rev. Warren W. Beale

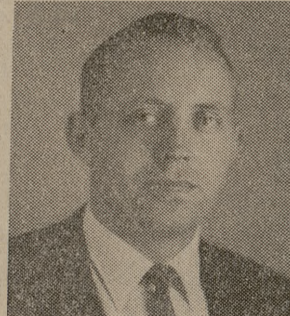
Leading the meetings in the lounge of Dormitory 9 will be Rev. Warren W. Beale, pastor, First Presbyterian Church, Eagle Lake, Texas. Beale was born in Atlanta, Ga. and attended the University of Georgia in 1940. He received his B. D. at Columbia Theological Seminary in Decatur in 1950. Rev. Beale has held the position of Director of Student Work at the University of Houston and at Rice. At present he is working on his Th. M. Degree in Pastoral Counseling at Columbia Seminary.

from Perkins School of Theology. He is a member of the Texas Conference of the Methodist Church and the former pastor and organizer of the Wesley Methodist Church in Tyler.

Forums for Dorms 1 and 3 will be led by Rev. Russell Ware, Baptist Student Director, East Texas State Teachers College, Commerce.

Rev. Ware is the author of articles published in the Baptist Standard, The Baptist Training Union Magazine and The Baptist Student Magazine. He has served as Secretary of Training Union and Student Work for the Southern Baptist General Convention of Cal. and as Superintendent of Missions, Austin Baptist Assoc. Austin. Ware received his B. A. from Baylor in 1942 and his B. D. from Southwestern Baptist Theological Seminary in 1951.

Williams was born in Waco and in 1947, received one of the first Jesse Jones Scholarships to A&M. He completed his freshman year and, deciding to go into the ministry, transferred to Abilene Christian College. Here he received an athletic scholarship and lettered three years in football and track. He has worked with Boies Orphans Home in Quinlan, Tex. and served for one year as minister of the Southside Church of Christ in Brownwood.



R. H. Williams



Rev. Russell Ware

R. H. Williams, minister, Northside Church of Christ, Austin, will conduct the meetings in the lounge of Dorm 15 for Dorm 15 and the top two floors of 17.



Rev. James Lee Riley

Rev. James Lee Riley, First Methodist Church, Gilmer, will live in Dorm 2 and conduct group discussions in the lounge of the Music Hall for Dorms 2 and 4.

Riley was born in Leggett, Tex. and attended Lon Morris College in Jacksonville. He received his B. A. from S.M.U. and his B. D.

CATERING FOR SPECIAL OCCASIONS
 Leave the Details to me.
LUNCHEONS BANQUETS WEDDING PARTIES
 Let Us Do the Work—You Be A Guest At Your Own Party
 Maggie Parker Dining Hall
 W. 26th & Bryan TA 2-5069

SKYWAY DRIVE-IN THEATRE
 WED. — THURS. & FRIDAY
"THE BURNING HILLS"
 with TAB HUNTER
 —Plus—
"ALCATRAZ ISLAND"
 with ANN SHERIDAN

GUYTON HALL THEATRE
 WEDNESDAY
"PROBABLY THE CLEVEREST AND MOST HILARIOUS FRENCH COMEDY SINCE THE WAR!"
 Crowther, N. Y. Times
FERNANDEZ
 in a delightful "tour de force"
"THE SHEEP HAS 5 LEGS"
 Directed by HENRI VERNEUIL

PEANUTS
 SNOW! I'M SICK AN' TRED OF SNOW! I THINK IF I SEE ONE MORE SNOWFLAKE, I'LL LOSE MY MIND!

L'L ABNER
 THIS QUIET PLACE YOU WANTED TO STOP AT, BABY—AIN'T WE NEAR IT YET?
 WAL, YO GOTTA LEAVE THIS MAIN ROAD—BOUNCE OVER THET DRY CRICK—
 THEN, AH'LL HELP YO' LIFT TH' CAR OVER TH' GULCH—
 AN-NOW—RELEASE TH' BRAKES!! HOLD TIGHT!!—AN' LET HER ROLL!!
 —AN' HERE WE IS—DOGPATCH!!
 ("I DREAMED O' SOMETHIN' LIKE THIS!!—TH' POIFECT HIDEOUT WITH TH' POIFECT DOLL!!")

Read Battalion Classifieds Daily

DINE OUT

A Sure Way to Your Family's Heart

(The Wife You Save May Be Your Own)

WEDNESDAY—DINNER MENU
 SOUTHERN FRIED CHICKEN
 (Served Family Style)

\$1.35
 PER PERSON

MEMORIAL STUDENT CENTER DINING ROOM

SERVING

LUNCH — 11:30 A.M. - 2:00 P.M., 7 DAYS A WEEK
 DINNER — 6:00 P.M. - 8:00 P.M., Mon. thru Fri.

A Campus-to-Career Case History



Manager Joseph S. Manning discusses a customer service request with Office Supervisor Catherine Hazleton.

"Like having your own \$3,000,000 business"

Joseph S. Manning graduated in 1950 from Wesleyan University with a B.A. degree and a major in Bio-Chemistry. But chemistry, he decided, was not to be his career. He became intrigued, instead, by the opportunities in the telephone business, and joined New York Telephone Company in 1951.

Today Joe Manning is Business Office Manager in Parkchester, Bronx, New York. In this position he is responsible for about 27,000 telephone accounts which bill some \$250,000 a month. 35 people work under him.

"It's like having your own \$3,000,000 business," Joe says. "And it's pretty much

an independent operation, which I enjoy. I'm in charge of all business office functions, and of personnel training and development. I also spend a lot of time out with my customers, making sure that they have the telephone service they want and need. It's an absorbing job.

"The phenomenal growth of the business is one of the reasons why advancement opportunities are so good in the telephone company. Since 1943, for example, the number of telephones in our area has almost tripled. Growth such as this, going on all over the country, makes the telephone business especially attractive to anyone seeking a career with a future."

Bell Telephone Companies offer many interesting career opportunities, as do Bell Telephone Laboratories, Western Electric and Sandia Corporation. Your placement officer has more information about all Bell System Companies.



SENIORS AND GRADUATE STUDENTS IN ENGINEERING, PHYSICS AND MATHEMATICS
 The Douglas Aircraft Company invites you to
ON CAMPUS INTERVIEWS
FEBRUARY 18, 19

Find out about the interesting positions, assistance in furthering your education and outstanding promotion opportunities with the world's largest manufacturer of aircraft and missiles. Get facts on living conditions, research facilities and opportunities to advance professionally at the various Douglas locations.

Reserve your career decision until you have talked with the Douglas representative. It may be the most important interview of your life.

SEE YOUR DIRECTOR OF PLACEMENT FOR YOUR INTERVIEW APPOINTMENT

The Battalion

The Editorial Policy of The Battalion Represents the Views of the Student Editors

The Battalion, daily newspaper of the Agricultural and Mechanical College of Texas and the City of College Station, is published by students in the Office of Student Publications as a non-profit educational service. The Director of Student Publications is Ross Strader. The governing body of all student publications of the A&M College of Texas is the Student Publications Board. Faculty members are Dr. Carroll D. Laverty, Chairman; Prof. Donald D. Burchard, Prof. Tom Leland and Mr. Bennie Zinn. Student members are John W. Gossett, Murray Milner, Jr., and Leighton B. Sheppard, Jr. Ex-officio members are Mr. Charles Roeber, and Ross Strader, Secretary. The Battalion is published four times a week during the regular school year and once a week during the summer and vacation and examination periods. Days of publication are Tuesday through Friday for the regular school year and on Thursday during the summer terms and during examination and vacation periods. The Battalion is not published on the Wednesday immediately preceding Easter or Thanksgiving. Subscription rates are \$3.50 per semester, \$6.00 per school year, \$6.50 per full year, or \$1.00 per month. Advertising rates furnished on request.

Entered as second-class matter at Post Office at College Station, Texas, under the Act of Congress of March 3, 1879.

Member of:
 The Associated Press
 Texas Press Association

Represented nationally by National Advertising Services, Inc., at New York City, Chicago, Los Angeles, and San Francisco.

The Associated Press is entitled exclusively to the use for republication of all news dispatches credited to it or not otherwise credited in the paper and local news of spontaneous origin published herein. Rights of republication of all other matter herein are also reserved.

News contributions may be made by telephone (VI 6-6618 or VI 6-4910) or at the editorial office room, on the ground floor of the YMCA. Classified ads may be placed by telephone (VI 6-6415) or at the Student Publications Office, ground floor of the YMCA.

JIM BOWER Editor
Dave McReynolds Managing Editor
Barry Hart Sports Editor
Welton Jones City Editor
Joy Roper Society Editor
Leland Boyd, Jim Neighbors, Joe Tindel News Editors
Jim Carrell Assistant Sports Editor
D. G. McNutt, Val Polk, Fred Meurer, Joe Buser Reporters
John West, C. R. McCain Staff Photographers
Don Collins Staff Cartoonist
George Wise Circulation Manager
Maurice Olian CHS Sports Correspondent

PALACE
 Bryan 2-8879
 NOW SHOWING
"ROCK & ROLL"

IT'S GOT THE HEAT AND THE BEAT!
 20th Century-Fox
TOM EWELL
JAYNE MANSFIELD
EDMOND O'BRIEN
THE GIRL CAN'T HELP IT
 CINEMASCOPE
 Plus 15 Rock 'n' Roll Stars
JULIE LONDON
RAY ANTHONY
 Produced by FRANK TASHLIN
 Directed by FRANK TASHLIN and HERBERT BAKER

QUEEN
 LAST DAY
 Even funnier than the Pulitzer Prize play!
Marlon BRANDO
Glenn FORD
Machiko KYO
"The Teahouse OF THE August Moon"
 CINEMASCOPE & METROCOLOR
 co-starring Eddie ALBERT

By cartoonist-of-the-year Charles M. Schulz

By Al Capp

Ag
 Do
 TI
 BAS
 "V
 TH
 T
 SMO
 the Smoot
 SUPE
 through 20
 SMOKE
 SMO
 VICEP
 © 1957, Brown