

## Dial TA 2-6667 For Correct Time

A touch of modernized "Old Country" service to luxury minded folks is now available to residents within the Bryan-College Station telephone exchange.

**A&M MENS SHOP**  
103 MAIN — NORTH GATE  
**AGGIE OWNED**

It is the newly hooked-up time telling service which went into effect yesterday. Bryan's Mayor Harry Dishman was the first to sample the first time teller in this part of Texas.

Though having a European flavor, the set-up is Americanized and commercialized by being jointly sponsored by Parker-Astin Hardware and Southwestern States Telephone.

To get the service a seeker dials TA 2-6667 and hears a short commercial. And then a soft feminine voice says, "At the tone, the time will be. . . ." what ever the time of day or night

## From Holland To U.S.

# College Station Welcomes Family

By DAVE McREYNOLDS

An idea adopted in a meeting of men of the A&M Presbyterian Church last year reached its goal yesterday morning when a family of six, the Jake van Luik's moved into College Station.

The extraordinary part of the newcomers' coming here is this family traveled all the way from Holland to a new home here.

The man, his wife and four children have been provided a way to make their own way in the world, out of the crowded conditions of Europe and away from the strife of their native country.

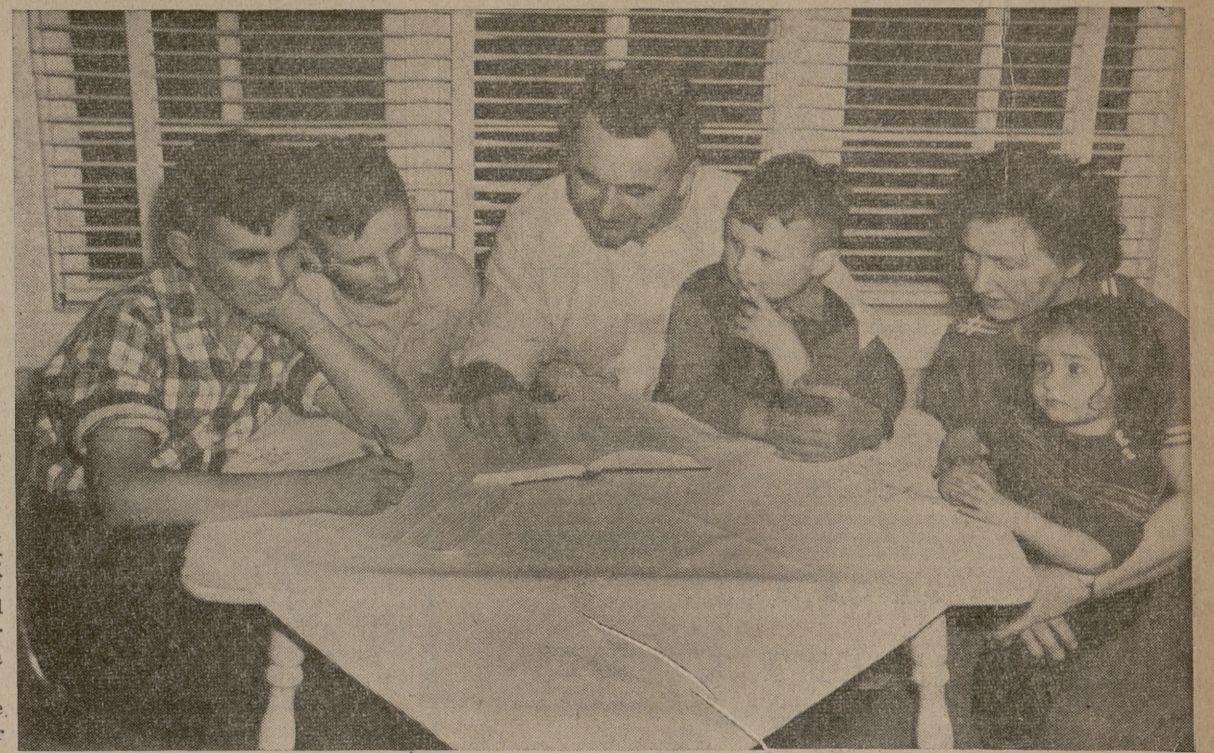
Coming to this country, unlike many of our own forebearers, the van Luiks, came by a modern mode of transportation—the airplane. They left Holland Monday morning aboard a trans-Atlantic clipper of KLM, Royal Dutch Airlines, and arrived in College Station four days later. Quite a jump for a family of four.

The van Luiks, composed of the father, Jake; his wife, Jane; their three sons, Jake Jr., 15, Abraham 12, and Alex 5, and small daughter, Connie, 1½, have moved into their home at 203A Fairview in Southside, College Station.

Their trip to the United States and a chance for citizenship was arranged by the members of the local Presbyterian Church through the Church World Service. This organization serves all Protestant churches except the Lutheran.

After the initial movement got underway last August the entire church got behind the work to help a deserving family come here, said Rev. Charles Workman, youth leader for A&M Presbyterian Church.

Yesterday before the van Luiks arrived members of the church



MEET THE VAN LUIK FAMILY—(l to r) Jake Jr., 15; Abraham, 12; Jake, Sr.; Alex, 5; Mrs. Jane van Luik and Connie, 1½.

were on hand contributing to help get the family started in the United States.

The newcomers sold all their belongings before coming over, except essential personals since express charges were so prohibitive, Workman pointed out.

Members of the church have contributed, sheets, china, and all the essentials for beginning a household from scratch Workman says.

After deciding to try and locate a family in this area the church group located a job sponsor, who would guarantee a means of livelihood for the prospective immigrants. In this case Marion Pugh, of Pugh Lumber Co., filled the need.

The church then sent a request to the CWS for a cabinetmaker but it was January of this year before a family was found. The original plan called for either a single person or just a man and wife. When a family was found, the van Luiks, it was found they had four children.

A telegram was sent to the church asking if they would accept the family in question.

They wired back they would, so the cross-continent trek of the van Luiks got into "the last stages."

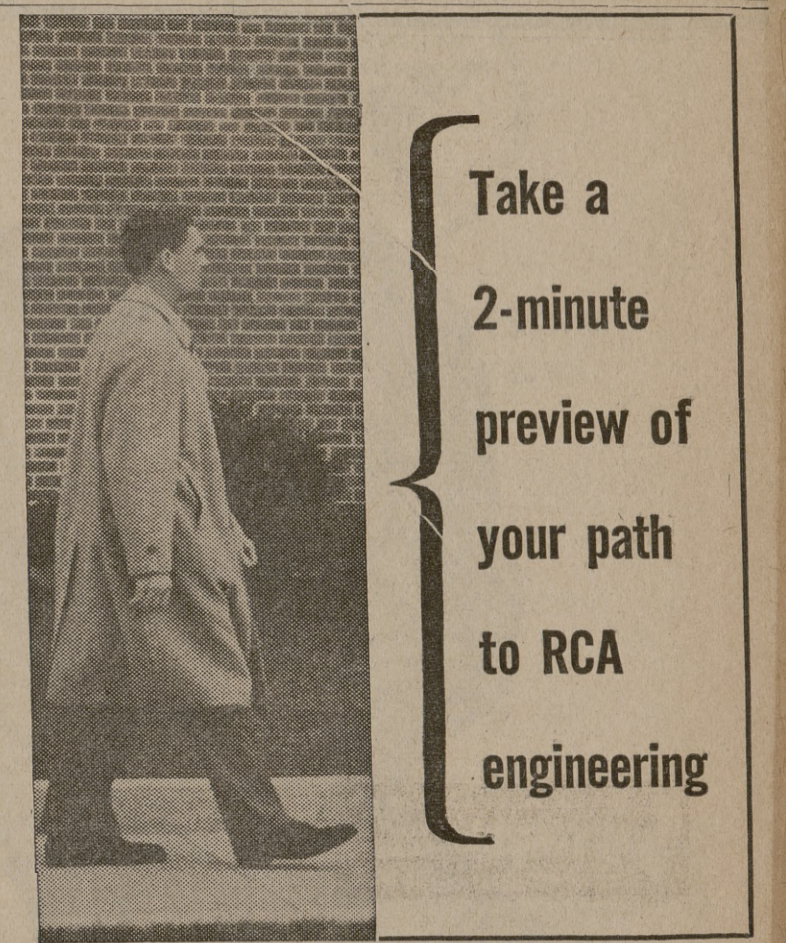
Conditions in Holland have been getting progressively tougher since the end of World War II when most of the available housing was destroyed. Jobs were at a premium and floods of 1953 destroyed more homes and industry. Then the independence of Indonesia sent more Hollanders back to the "old country" and a place to begin life anew.

Officers of the Men of the Presbyterian Church which made this possible are W. L. Penberthy, president; W. L. (Red) Cashion, vice-president; Luther Jones, chairman of finding place for the family to live and work.

### Confession

WICHITA, Kan. (AP)—Detective Kenneth Briggs had on trouble solving a couple of burglaries. The telephone rang at police headquarters and a boy told Briggs he could get "information for you about the guy who broke into two places." The informer promised to call back. On the second call, the tipster said he had the information. "Okay," said Briggs. "Who broke into the places?" "Me." A squad car brought the juvenile in.

**CATERING FOR SPECIAL OCCASIONS**  
Leave the Details to me.  
**LUNCHEONS BANQUETS WEDDING PARTIES**  
Let Us Do the Work—You Be A Guest At Your Own Party  
Maggie Parker Dining Hall  
W. 26th & Bryan TA 2-5069



Take a  
2-minute  
preview of  
your path  
to RCA  
engineering

### Specialized training program

Earn a regular professional engineering salary as you work on carefully rotated assignments giving you a comprehensive view of RCA engineering. Your individual interests are considered and you have every chance for permanent assignment in the area you prefer. Your work gets careful review under RCA's advancement plan and you benefit from guidance of experienced engineers and interested management. Following training, you will enter development and design engineering in such fields as Radar, Airborne Electronics, Computers, Missile Electronics. For manufacturing engineers, there are positions in quality material or production control, test equipment design methods. You may also enter development, design or manufacture of electron tubes, semiconductor components or television.

### Direct hire

If you are qualified by experience or advanced education, your interests may point to a direct assignment. The RCA management representative will be glad to help you. Many fields are open . . . from research, systems, design and development to manufacturing engineering . . . in aviation and missile electronics, as well as radar, electron tubes, computers, and many other challenging fields.

### . . . and you advance

Small engineering groups mean recognition for initiative and ability, leading on to advancement that's professional as well as financial. RCA further helps your development through reimbursement for graduate study under a liberal tuition refund plan.

### Now . . . for a longer look at RCA

See your placement director about an appointment with an RCA engineering management representative who will be on campus . . .

MONDAY, FEBRUARY 18, 1957

Talk to your placement officer today . . . ask for literature about your RCA engineering future! If you are unable to see RCA's representative, send your resume to:

Mr. Robert Haklisch, Manager  
College Relations, Dept. CR-6102  
Radio Corporation of America  
Camden 2, New Jersey

**RCA RADIO CORPORATION of AMERICA**

Member — Florists Telegraph Delivery Association.



U. S. Senator Paul H. Douglas

Sen. Paul H. Douglas, Dem., of Illinois, is a former economics professor, ex-Marine, and an internationally known author and teacher.

## HEAR THIS FAMOUS AMERICAN DISCUSS:

# "OUR TROUBLE SPOTS"

FRIDAY, FEBRUARY 8  
8:00 P.M.

MSC BALLROOM

GREAT ISSUES TICKETS

WILL BE HONORED

REGULAR ADMISSION \$1.00

Presented By

THE GREAT ISSUES COMMITTEE  
OF THE MEMORIAL STUDENT CENTER



# Your Future with Humble

To carry on its dynamic program of exploration, development and growth, Humble Oil & Refining Company needs:

- \* men whose specialty is the geological and geophysical study of the earth's subsurface
- \* men to drill exploratory and development wells
- \* men to make the intricate calculations on which oil production is based
- \* men for its refining and petrochemical manufacturing
- \* men to staff its research laboratories

If your specialty is engineering, geology, geophysics, chemistry, mathematics or oceanography, there is a bright future ahead for you with Humble.

You will have opportunities for professional progress. You will also have assurance of job security and insurance and retirement benefits that are second to none. And your pay will be good.

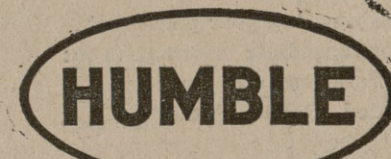
In addition, you will have the satisfaction which comes from doing important and challenging work. The petroleum industry supplies 60 per cent of the nation's energy requirement; and the continued discovery and development of oil reserves in the nation is vital to our welfare.

Humble interviewing teams will be on the campus on February 12, 1957. Be sure to check with your Placement Bureau for the exact time and place so you can discuss job opportunities; or write directly to:

Head of Personnel  
Humble Oil & Refining Company  
P. O. Box 2180  
Houston 1, Texas

### QUICK FACTS ABOUT THE HUMBLE COMPANY

Humble leads in production of crude oil in the U. S. Humble's Baytown Refinery is one of the largest in the world. Humble's Research Centers at Houston and Baytown are known for their contributions to the discovery and production of crude oil and to the development of petroleum products. Humble Pipe Line Company operates one of the largest pipe-line systems in the U. S.



HUMBLE OIL & REFINING COMPANY

SAY . . .

# "I LOVE YOU"

TO THAT OUT-OF-TOWN SWEETHEART ON VALENTINE DAY — WITH FLOWERS BY WIRE

NORTH GATE

AGGIELAND FLOWER SHOP

PHONE VI 6-5825

