

BACK OF THE WEEK—A&M's 150-pound Don Watson, who was named Back of the Week by the Dallas Morning News after his tremendous game against TCU last week. Watson intercepted a pass in the end zone to shut the door in the Froggies' face, slashed 37 yards to the Horned Frog 20 in the Aggies' scoring drive, then passed for the touchdown to John Crow to win, 7-6.

Named Back of Week

Watson Wins Title Of Game-breaker

By **JOE DAN BOYD**
 Don Watson's Saturday heyday against TCU's fourth-ranked Frogs is a familiar story with the wirey Aggie backfielder, dating back to his senior year at Franklin High School.

Not only has the shifty halfback broken up two straight tussles with the terrific Frogs, paving victory paths for underdog A&M, but on both occasions the "Watson magic" came in the final period with the Ags trailing and twice won for him "Back-of-the-Week" distinction.

In Saturday's showdown battle, Watson halted the heralded Froggie offense with a dramatic pass interception and blazed 37 yards in the following Aggie scoring drive to the TCU 20. The 150-pound dynamite charge climaxed A&M's scamper, passing to John Crow for the payoff touchdown.

It was history repeating itself, as 42,000 fans recalled last year's similar exhibition by the Aggie's tiny mite which again more than equalized the two great gridiron

teams. "It makes me think of my senior year in high school," Watson said, "when we came from behind in the fourth quarter to defeat a favored Hearne eleven by one point for the District championship."

Watson thinks the TCU team which performed Saturday on Kyle Field was every bit as good as last year's SWC Champs and scorns attempts to credit the weather with any part in the victory.

"We didn't really try any harder against TCU than against any other team," the crafty halfback added. "We try hard in every game, the amount just depends on the quality of our opposition. For instance, on several occasions our defense rose to meet serious situations and seemed to perform best when the chips were down."

"I guess we were ready for them though," admitted the flashy "Back of the Week." "It seems like our workouts went along smoother all week and everyone played together Saturday, especially in the fourth quarter."

Sqd. 6 Blasts 'A' TC 36-26 in Basketball

By **DON BISETT**
 Class A basketball was in the limelight today on the intramural sports scene. Floyd Thompson and Bob Coscia, with 13 points, each led Squadron 6 to a 36 to 26 victory over ATC. Bob Hardee with seven, Don Weber with six, and John Oeterbeck with five led the ATC squad in their futile attempt.

Wes Henderson and Larry Carter with 10 points each were the big guns in A Engineer's attack as they won a thriller from Squadron 4, 28-26. Paul Creel of the defeated air force team was high point man of the game with 12 points.

In the only walk-away of the afternoon Squadron 7 blasted Squadron 7, 18 to 3. Sam Marlow

with six and John Stewart with five led their team in the slaughter.

Roy Stewart with 11 points and over half of his team's total of 20 led them, Squadron 15, to victory over Squadron 5.

Five games were played in class B, football yesterday. The results of these games are as follows: A Armor lost to Squadron 5 by the score of 13-0, Squadron 4 beat D Infantry on a safety 2-0, and C Infantry defeated Squadron 3 by a score of 6-0. B Infantry beat Squadron 2 by the bare margin of one 20 yard line penetration in an otherwise scoreless game, and Squadron 1 beat A Infantry 19-0 in a game which was the most thrilling from a scoring standpoint.

Kittens Journey to Navasota

A&M Consolidated's Kittens tangle with the Navasota Fangs tonight on enemy territory. The Kittens stand at 1-3 in District competition and 2-3 for season activity.

Fullback Condy Pugh currently leads the Kittens in rushing with 335 yards and a 7.0 average.

Pugh's punting average also tops the list at 25.5 yards.

In the first meeting of the two teams earlier this year, the Kittens scored a 25-0 shutout over the Fangs.

Starting for A&M Consolidated will be Left End Bobby Adams; Left Tackle Alex Quisenberry;

Left Guard Bob White; Center Dar-ryl Bailey; Right Guard George Outlaw; Right Tackle Larry Maddox; Right End Jack Armistead; Quarterback Russell Welch; Left Half Ronnie Rea; Right Half Johnny Williams; and Fullback Condy Pugh.



FANCY CENTRAL AMERICAN, RIPE

BANANAS

U. S. No. 1 Luscious, Beautiful Golden Yellow Bananas. Scientifically Ripened in Weingarten's Banana Locker Rooms! Try Banana Pudding Tonight! Per Pound

8c

Red Roman Beauty

APPLES

Fresh Texas

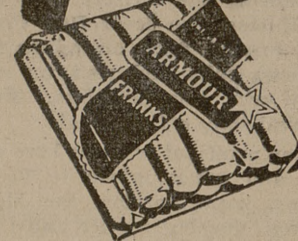
U. S. No. 1 Per Pound 9c

PUMPKINS

U. S. No. 1 Per Pound 5c

ARMOUR STAR

FRANKS



Thin-Skinned, Lean Tender Meat 1-Lb. Cello Pkg.

35c

Hot Dog Buns Pkg. of 8 for 20c

Wisconsin Aged

Cheddar Cheese lb. 59c

MARYLAND CLUB

The Favorite of Coffee Drinkers! Fine, Zesty Flavor and So-o-o Fresh! lb. can 85c

TUNA CHUNKS Food Club No. 1/2 Can 19c

VEAL SQUARE CUT SHOULDER OR CROWN ROAST

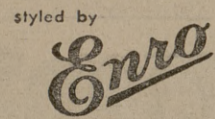
Finest in Flavor, Table Trimmed, Very Young and Extra Tender lb. 28c

SIRLOIN STEAKS lb. 59c

Bayer Aspirin Bottle of 100 Tablets 39c

HALLOWEEN CANDY
 A Complete Assortment of "Trick or Treat" Goodies! Individually Wrapped and Other Choices!!

Exclusive, Original Patterns in Sport Shirts



Different and exclusive designs and styling are the keynote of these sportshirts. The talents of creative fabric designers, original stylists and master craftsmen have been combined to give your sportshirt wardrobe a distinctive appearance.



The New, shorter collar on this sportshirt gives it a neater, trimmer effect. The fabric is rayon challis with the pattern worked in black, blue, brown or red on a white ground, also available in just the reverse.

The New Continental Collar on this sportshirt has flexitized stays so you can give it just the roll that suits you best. The fabric is a blend of fine cotton and pure silk. A black stripe accents the background of either blue, tan or gray.

\$5.95 to \$8.95

The Exchange Store

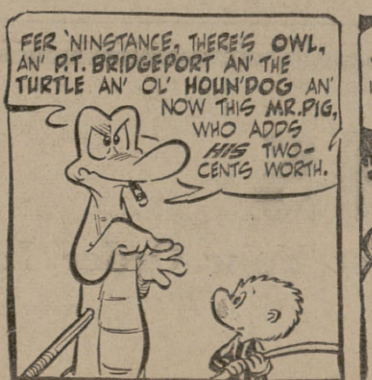
"Serving Texas Aggies"

L'L ABNER



By **Al Capp**

POGO



By **Walt Kelly**