



A&M's STARTING FISH BACKFIELD—(left to right) right half back Henry Colwell, fullback Bob Yeates and left half back Gordon LeBeouf with quarterback Charles Milstead kneeling. The 1956 version of the Fish open tonight against UH's greatest first-year team on Kyle Field at 7:30 p.m.

## Fish Meet UH's Finest Here Tonight at 7:30

By JOE BOYD  
 Assistant Sports Editor  
 A&M's Fish gridders open the 1956 season tonight at 7:30 against the best team ever fielded by the University of Houston's Kittens. A "battle of giants" is forecast with several all-staters dotting the list of both teams.

The Aggie Fish pit their highly-touted backfield against a ponderous Kitten line, with high school all-American Charles Milstead spearheading the action. All-state Larry Ward is expected to turn in a creditable performance at right end.

Gordon LeBeouf, flashy all-State halfback, pits hard hitting speed and 190 pounds of power against such Kitten Linemen as 202-pound tackle Charles McKenzie. McKenzie is an all-State choice from Grand Prairie. Joe Glass, another all-stater from Baytown, highlights the Kitten guard position.

Abundance of high school stars isn't the only similarity between the two freshmen teams. Neither team can claim a definite weight advantage. Overall average for the Kittens is 198 pounds while the Fish round off at 195. Hous-

ton posts a 178 pound backfield and A&M's speedsters average 181. Bill Darwin, starting center for the Fish, lettered only one year in high school, but promises great things. The 215-pounder towers 6-4.

Starting Lineups

F	K
195 Caruthers...LE.....	Nettles 180
210 Rochelle...LT...McKenzie	202
210 Taylor...LG.....	Glass 190
215 Darwin...C.....	Boykin 194
190 Payne...RG.....	Long 190
200 Oliver...RT.....	Colvin 212
200 Ward...RE...Cleveland	215
185 Milstead...QB...Stephens	160
190 LeBeouf...LHB.....	Bice 175
170 Colewell...RHB.....	King 170
180 Yeates...FB.....	Slonac 205

### Kittens Face Colts Tonite

A&M Consolidated's Kittens unfold a 1-1 district record tonight at 7:30 on Tiger Field hosting Madisonville's Colts at 7:30. The "virus" has sidelined some Kitten regulars forcing changes in the starting roster.

The Kittens are needing a win to shove their district series on the debit side. Fullback Condy Pugh will spearhead the Kitten's rushing attack.

**Guns - Shells - Hunting Licenses**  
 EVERYTHING FOR THE HUNTER  
 AT THE  
**STUDENT CO-OP**

HERE IS THE ORIGINAL CLOTHES DRYER KNOWN AND LOVED BY MILLIONS OF HOUSEWIVES THROUGHOUT THE NATION

No Clothes Hanging Problem **HAMILTON** No Stolen Clothes

- Get all 6 HAMILTON dryer features!
- Carrier-Current Drying
  - Fabri-Dial Temperature
  - 130 Minute Timer
  - Sun-E-Day Lamp
  - Double Pass Lint Control
  - Fluff Dry Drying Extra
- SALES - RENTALS - SERVICE - LIBERAL TERMS  
 Call today for free home demonstration  
**Bryan Sewing Machine & Appliance Co.**  
 Ridgcrest Shopping Center VI 6-6723



### Triple threat in any league

Any way you look at it, this Arrow University shirt is an eye-catcher. Collar buttons down trimly at three separate points, front and center back. And the back sports a full box pleat. Comes in subtle colors galore... 6 plus white in oxford and 5 crisp broadcloth checks. Team it up with this smart, all-silk repp tie.

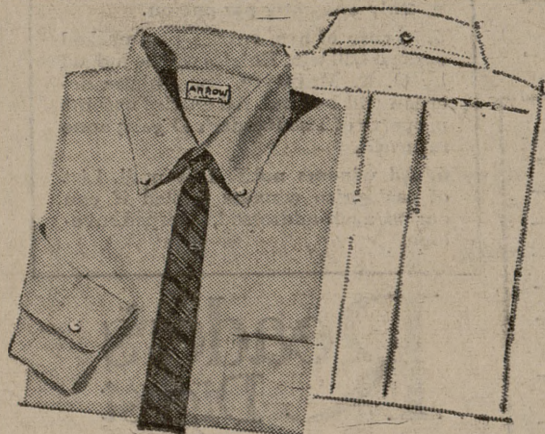
Shirt, \$5.00; tie, \$2.50.

**ARROW**

—first in fashion  
 SHIRTS · TIES

Want to get in a high-scoring habit?

Add up all the points of this Arrow University shirt, and you can't help scoring on campus and off. Button-down collar, front and center back. Full action box pleat for comfort. And we have them in a wide range of favorite patterns and colors. Can we get you in one soon? Shirt, \$5.00; all-silk repp tie, \$2.50.



**W. S. D.**

CLOTHIERS

108 N. MAIN N. BRYAN



...are yours when you food shop here!

YOU **DON'T** NEED GLASSES to spot VALUE at **MILLER'S!**  
 More and More People... Every Day... Are Saving More Money On Foods At Our Friendly Store

### Groceries

GLADIOLA  
**Biscuits**  
 2 cans 15c

**Chili**  
 WOLF  
 No. 2 Can  
 39c

MAYFIELD'S  
 High Quality

**Eggs**  
 Grade "A" Economy  
 doz. 33c

Grade "AA" Medium  
 doz. 43c

NEW BLUE  
**Rinso**  
 Giant Box  
 55c

CREAMY CRUSTENE  
**Shortening**  
 3 Lb. Carton  
 59c

LILLY or SANITARY  
**Mellorine**  
 1/2 Gal.  
 49c

OSCAR MAYER  
**Lunch Meat**  
 12 Oz. Can  
 29c

CAMPBELL'S  
**Tomato Soup**  
 can 10c

LIBBY'S  
 Sliced or Halves  
**Peaches**  
 303 Can  
 19c

### Market

Heart of Texas Fancy—Cut-up (No Feet)  
**FRYERS** . . . . . lb. 29c

Lean Tender Veal  
**ROUND STEAK** . . lb. 69c

Fresh  
**GROUND MEAT** . 3 lbs. 85c

Lean Meaty  
**PORK RIBS** . . . . . lb. 39c

Armour's Sliced  
**COLUMBIA BACON** . lb. 39c

**Armour's Star Smoked Hams**  
 Shank End . . . lb. 45c  
 Whole . . . . . lb. 49c  
 Center Slice . . lb. 89c

### Produce

Red Ripe  
**TOMATOES** . . . . . etn. 9c

Fresh Snowball  
**CAULIFLOWER** . . . . lb. 10c

California Wonders  
**PEPPERS** . . . . . lb. 10c

Fresh Tokay  
**GRAPES** . . . . . lb. 10c

### Frozen Foods

Libby's—Frozen-Fresh—10 Oz. Pkg.  
**STRAWBERRIES** . . pkg. 19c

Libby's—Frozen-Fresh—6 Oz. Cans  
**ORANGE JUICE** . 2 cans 25c

### Drugs

Pint Bottle  
**RUBBING ALCOHOL** . . 10c

Colgate's—29c Tubes  
**TOOTH PASTE** . . 2 tubes 39c

### Groceries

WHITE or COLORED  
**Kleenex**  
 200 Count

2 pkgs. 25c

LIBBY'S  
**Pineapple**

**Juice**  
 46 Oz. Can  
 25c

LIBBY'S  
**Cut Beets**  
 303 Cans

2 cans 23c

IMPERIAL CANE  
**Sugar**

5 lbs. 45c

NABISCO PREMIUM  
**Saltines**

1 box 25c

BAMA PEACH  
**Preserves**  
 12 Oz. Tumbler

19c

WASHBURN'S  
**Pinto Beans**  
 2 Lb. Bag

19c

HERSHEY'S  
**CHOCOLATE**

**Syrup**  
 16 Oz. Can

19c

BETTY CROCKER  
**Cake Mixes**  
 White, Yellow, Devils  
 Food, Spice

pkg. 29c

## MILLER'S SUPER MARKET

Sunday 8 a.m. to 8 p.m., Monday, Tuesday, Wednesday, 7 a.m. to 8 p.m.  
 Thursday, Friday and Saturday — 7 a.m. to 9 p.m.

SPECIALS FOR THURSDAY — FRIDAY — SATURDAY — OCTOBER 4TH — 5TH — 6TH