

Aggies 11th in AP Poll; "Look Better" -- Bryant

Loeffler Asks Basketballers To Shape Up

Head Basketball Coach Ken Loeffler appeared anxious Tuesday to have October and the basketball season roll around.

Stu Heller and Neil Swisher are expected to bolster the 1956 A&M team, according to Loeffler. They are up this year from last year's freshman squad and bring some much needed height to help George Mehaffey and Fritzie Connally.

Although Coach Loeffler realizes that fall training is three weeks away, he does encourage his ball players and others interested to make use of the gym.

Despite last Saturday's victory over Villanova, A&M dropped out of the first 10 in the Associated Press' first weekly football poll.

The Aggies fell from their pre-season pick, ninth, to the number 11 rung in the grid ladder after their poor showing against the up-coming Wildcats.

"We're looking a little better this week than we have so far," confirmed Coach Paul (Bear) Bryant Tuesday after putting the Aggies through a 40-minute full-speed scrimmage. "But we sure haven't looked like a football team yet."

The Cadets, after going through the motions to subdue the Villanova Wildcats, 19-0, last Saturday, move into the swamps of Louisiana this weekend to meet the fired-up Tigers of LSU.

With almost a full month of practice behind them, the powerful Bengals will be pointing for the Aggies. In 1955 A&M crushed LSU, 28-0, but the Louisiana lads don't expect any such score this year as they open their season on the home front.

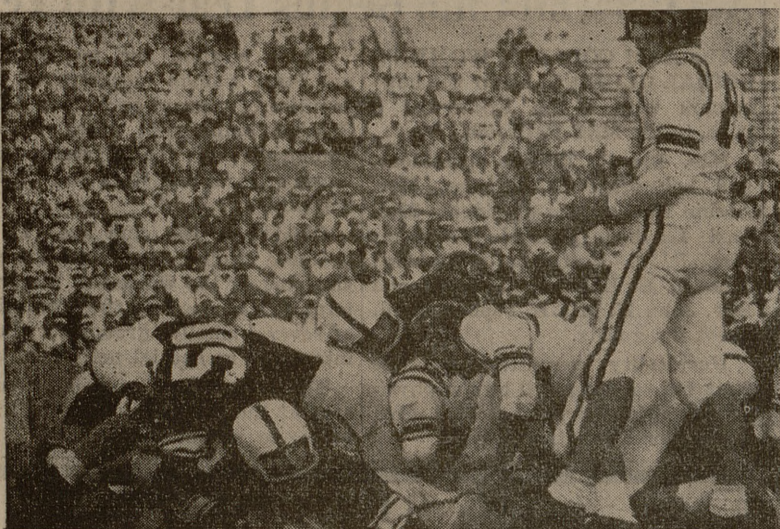
"In all probability LSU will beat us if we don't perk up,"

said Coach Bryant. "They haven't had much spirit or enthusiasm, yet, but I have hopes we'll get a little life in them."

Jack Pardee and Dennis Goehring both watched Tuesday's practice proceedings from the sidelines with injuries contracted in Saturday's contest. Other than that pair, the Aggies are in better physical shape than at this time last week.

"We hope Pardee will play some Saturday," commented Bryant. Goehring will probably be able to suit up today.

"Our first group did fairly well today," stated Bryant. "They looked pretty good, but we've got a long way to go."



GET OFF MY BACK—seems to be what Aggie Quarterback Roddy Osborne is saying after picking up some real estate in last Saturday's 19-0 victory over Villanova.

Eyes Examined Glasses Fitted

DR. E. LUEDEMANN
 DR. G. A. SMITH

Optometrists

BRYAN OPTICAL CLINIC
 105 N. Main Bryan, Texas
 (Next to Lewis Shoe Store)

HANDBALL GLOVES and
 HANDBALLS
 STUDENT CO-OP

Maglie's No-Hitter Downs Phils, 5-0

BROOKLYN —(AP)—Sal Maglie, the old pappy guy, turned his already great comeback into an epic last night with a no-hit, no-run performance over Philadelphia that gave Brooklyn a 5-0 victory and kept the Dodgers within a half game of first place Milwaukee in the National League pennant race.

The 39-year-old righthander, previously junked by the New York Giants and Cleveland Indians, claimed his 12th victory with the clutch job in which only three Phillies reached base, two on walks and one when hit by a pitch.

The Dodgers, held to just four hits, stayed even in the lost column with the Braves, who all but dropped Cincinnati out of the race 7-1

in an afternoon game. Milwaukee, with three games left, now is 91-60, good for a three percentage point edge over the Dodgers, who are 90-60 with four games remaining.

In the ninth, Maglie retired pinch-hitter Frank Baumholtz on a foul pop, struck out pinch-hitter Harvey Haddix, hit Richie Ashburn on the foot with a 1-2 pitch, and then wrapped it up by getting Marv Blaylock on a bounce to second baseman Junior Gilliam—setting off a mob scene that left Sal mowed under by his mates and fans who flooded the field.

WEDNESDAY
 "THREE STRIPES IN THE SUN"
 With Aldo Ray
 PLUS
 "WOMEN'S PRISON"
 With Ida Lupino

Gutten hall THEATRE
 WEDNESDAY
 JOSE FERRER - ALLYSON
 ALL THE INTIMACY OF THE PULITZER PRIZE PLAY!
 THE Strike with JOY PAGE

CIRCLE
 LAST DAY
 "HILDA CRANE"
 Jean Simmons
 ALSO
 "Houston Story"
 Lee J. Cobb

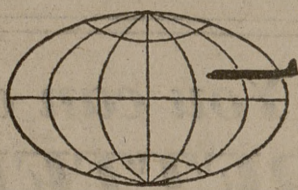
CAMPUS
 Thru THURSDAY
 Away All Boats!
 Color by TECHNICOLOR
 Jeff CHANDLER - George NADER - Julie ADAMS
 A UNIVERSAL-INTERNATIONAL PICTURE

TCU, Mustangs In AP Top 10

Before they have even played a game, Oklahoma's Sooners have lost two of their leading challengers for the No. 1 spot in college football.

As a result, the first weekly poll after the season's play began again listed Oklahoma on top, but Notre Dame had dropped to 14th place after a 19-13 setback by Southern Methodist and Maryland was clear out of sight after a 26-12 beating by Syracuse. It took just one week to give the pre-season selections a thorough shuffling.

The rest of the first 10 lined up this way: Georgia Tech, Michigan State, Texas Christian, Southern Methodist, Southern California, Syracuse, Ohio State, Mississippi and Pittsburgh.



Here's How to Play TANGLE SCHOOLS

OLD GOLD'S GREAT NEW GAME

A total of 24 puzzles will appear before the Christmas holiday. Get started now in Old Gold's exciting new game for college students only.

Here are the Official Tangle Schools Rules! SAVE THEM!

1. PRIZES (a) P. Lorillard Company, the makers of OLD GOLD CIGARETTES, will award a total of 86 prizes, valued at more than \$15,000—to college students in the United States in accordance with the following Official Rules. (See complete list of prizes.) (b) This game will consist of twenty-four (24) monogrammed puzzle drawings to be published in this and other college newspapers; three puzzles each week for eight weeks, and a series of tie-breaking puzzles, if needed, as outlined in rule 2. (c) Contestants must arrange the scrambled letters from each of the 24 monogrammed drawings so that they correctly spell the name of a certain American college or university. In the scrambled drawings there are no superfluous letters, no distortion of letters, and no letters are left out to confuse or mislead entrants. A clue will be furnished with each drawing to help identify the correct answer to the puzzle.

2. (a) The person complying with all the rules of the game and solving the highest number of puzzles correctly will be declared the winner of the first prize, a 40-day tour of the world for two persons—the winner and another person of his choosing or, at the option of the winner, the first prize shall consist of \$5,000 to be paid to the winner. The person complying with all the rules of the game and solving the second highest number of puzzles correctly will be declared the winner of the second prize. In like manner, the winners of the remaining 84 prizes will be determined. (b) In case more than one person solves correctly the same number of puzzles, the prize tied for, and as many subsequent prizes as there are persons tied, will be reserved and those so tying will be required to solve a set of tie-breaking puzzles, to determine the order in which the reserved prizes will be awarded. Each of the tie-breaking puzzles will be comprised of scrambled letters forming the names of either one, two or three American colleges or universities. Clues with each puzzle drawing will indicate whether the puzzle contains one, two or three schools to be identified. If, after solutions have been submitted to this second set of puzzles, a tie or ties still remain, those tied will be required to solve another tie-breaking puzzle. Accompanying this tie-breaker will be an official list of American colleges and universities. From these, contestants will make up a list of schools and colleges in accordance with instructions to be given at that time. The contestant earning the highest score in so doing will be awarded the highest of the prizes tied for. The next highest prize will be awarded the contestant earning the second highest score and so on down through the reserved prizes that have been tied for. These tie-breaking puzzles, if necessary, will be mailed to each contestant.

P. Lorillard Company reserves the right (only in the event of further tie or ties) to require contestants to solve as many tie-breaking puzzles under supervision, and without assistance, as are necessary to determine a single winner for each prize.

3. NOTE (a) When entrants have completed solutions to the complete set of 24 initial puzzles, which are to be published three per week in this paper, the solutions are to be printed and addressed to—Tangle Schools, P. O. Box 26A, Mount Vernon 10, N. Y., and mailed bearing a postmark not later than December 19, 1956. Decorated, pasted or embellished puzzles are not permitted. Each set of 24 puzzles must be accompanied by a wrapper from any type OLD GOLD CIGARETTE package—(REGULAR, KING-SIZE OR FILTER KINGS) or a reasonable facsimile thereof. (b) More detailed instructions on the mailing of completed sets of puzzles will be published later. No Solutions are to be sent in separately. Save the puzzles and your solutions so that they may be submitted as a complete set at the end of the game. Entrants are not limited as to the number of complete sets of Solutions. However, each set must be submitted individually, and only one prize will be awarded to any one entrant. (c) After the deadline for mailing solutions, the correct answers to all 24 puzzles will be published in a single issue of this paper. Each contestant must keep an accurate record of all solutions and check his answers with the published correct answers.

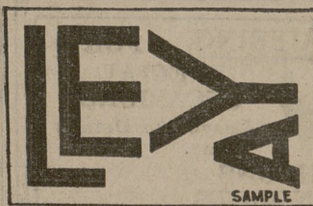
4. WHO MAY ENTER: (a) This game is open to all bona fide college students in the United States; that is, persons who, at the time of entering, are duly registered in an accredited college or university within the continental boundaries of the United States, except that the game is not open to students whose immediate families are employed by P. Lorillard Company or its advertising agencies. Contest is subject to all State and Federal regulations. (b) Contestants may, if they prefer, make copies of the puzzles by hand. Copies of the puzzles and of OLD GOLD package wrappers reproduced by a multiple process such as carbon paper or mimeograph are not acceptable. Entrants who want back puzzles and copy of Official Rules may obtain them by addressing their request to Tangle Schools Back Puzzles, P. O. Box 9, Grand Central Annex, New York 17, N. Y., enclosing 5¢ in payment for each puzzle desired and/or rules, together with a STAMPED

SELF-ADDRESSED envelope. (c) Prior to receiving a prize each winner may be required to sign an affidavit certifying that he or she is eligible to compete in accordance with rule 4-a; that he or she has not bought, sold or exchanged the puzzle solutions and is not acting for, either by proxy or in collaboration with, any person who is not qualified to participate under the rules.

5. METHOD OF JUDGING: Decision of the judges is final and contestants do not agree upon entering the game. Solutions to the puzzles will be judged on correctness, including the spelling of the names. All entries become the property of P. Lorillard Company. None will be returned. P. Lorillard Company cannot be responsible for any solutions unduly delayed or lost in the mails; this also applies to mail from the P. Lorillard Company to any contestant. On entering the game, each contestant accepts the foregoing rules as binding. P. Lorillard Company reserves the right to disqualify any entrants not conforming. Evidence indicating collusion by or ineligibility of contestants will automatically disqualify such contestants. P. Lorillard Company reserves the right to correct any typographical errors or other errors which may appear in any published matter in connection with this game. P. Lorillard Co., insofar as publication of puzzles is concerned, is responsible only for submitting material for publication to newspapers involved.

Copyright 1956, Harry H. Hollister

SAMPLE PUZZLE



CLUE: The third oldest institution of higher education in the United States, this university was chartered in 1701, and later named for a native of Boston. Walter Camp was a great football coach here.
 ANSWER: YALE

Save this alphabet. Letters shown in all puzzles will have the same characteristics. Notice the M's have straight sides; the W's are slanted. Note the difference between the N's and the Z's.

ABCDEFGHIJKLM
 NOPQRSTUVWXYZ

START NOW! Start smoking those great Old Gold cigarettes... start playing the great new game, "Tangle Schools"! Win a free tour of the world for two!

PUZZLE NO. 1

CLUE: Situated in an attractive New England town, this college for women opened in 1875. A training school for women naval officers was held here during World War II.

ANSWER _____
 Name _____
 Address _____
 City _____ State _____
 College _____

PUZZLE NO. 2

CLUE: This university is located in the Midwest, and is known for its large engineering schools. It was first opened to students in 1874.

ANSWER _____
 Name _____
 Address _____
 City _____ State _____
 College _____

PUZZLE NO. 3

CLUE: Founded in 1834, this university acquired its present name 50 years later—in 1884. Originally medical college, it issued the first degree in medicine conferred in the Southwest.

ANSWER _____
 Name _____
 Address _____
 City _____ State _____
 College _____

PALACE

TODAY THRU TUESDAY

MOBY DICK

Features Start
 1:28
 3:58
 6:28
 8:58

With GREGORY PECK

SPECIAL ATTRACTION — TRACK HISTORY BEING MADE BY THE 4 MINUTE MILE RUNNERS.

QUEEN

— LAST DAY —
 ERROLL FLYNN
 —in—
 "LET'S MAKE UP"

THURSDAY thru SATURDAY
 — Double Feature —
 "FIGHTING FOOLS"
 With The Bowery Boys
 and "CROSS CHANNELS"