

Tonite at 7:30

Kittens Open In Huntsville

By MAURICE OLIAN
CHS Correspondent

Defending Junior High champs, A&M Consolidated, opens 1956 district play tonight in Huntsville against the Hornets, last year's runners-up. Co-captains for the "Kittens" tonight will be Fullback Condy Pugh and Left Guard Bob White.

Coach Edsel Jones listed the probable starting offensive lineup as: Left End Bobby Adams, 109;

Left Tackle Alex Quisenberry, 158; Left Guard Bob White, 109; Center Charles Roebler, 112; Right Guard George Outlaw, 117; Right Tackle Fred Wright, 136; and Right End Jack Armistead, 117.

Quarterback Russell Welch, 104; Left Halfback Ronnie Rea, 125; Right Halfback Johnny Williams, 95; and Fullback Condy Pugh, 135.

Joe Olian will replace Welch at quarterback on the defensive team. Others scheduled to see action

are Left Tackle Bobby Guthrie, Linebacker P. D. Gondy, Left Guard Byron Bostick, Left Guard Mike Krenitsky, Right Tackle John Pedigo, and Left End Larry Randolph.

The Kittens nudged the Hornets 13-6 in last year's first encounter and tied 19-19 in the second tilt. Huntsville's 22 returning eighth graders pose considerable threat to the Kittens who have 12 eighth graders back.



DON BISETT QUIZZES BARNEY WELCH—at the first meeting of the 1956 Intramural Officers Wednesday afternoon. Left to right are an unidentified officer, Bobby Alexander, Bisett, Welch and John Rouse.

Campbell Breaks Record

CONISTON, England — (AP) — Donald Campbell Wednesday roared in his lobster-like hydroplane, Bluebird, to a new world water speed record of 225.63 miles an hour in a death-defying burst over the waters of Lake Coniston.

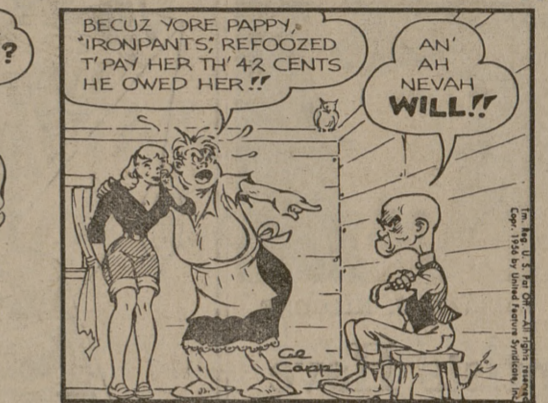
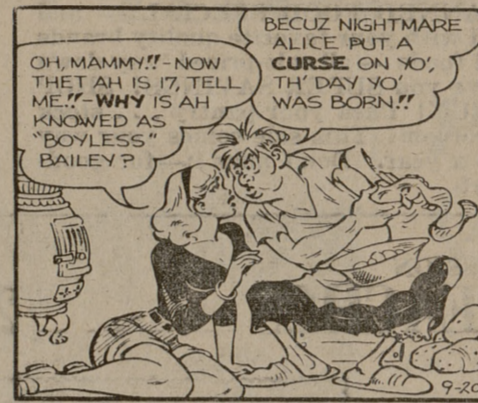
The 36-year-old Briton broke

his own record of 216.02 m.p.h. set in his jet-propelled Bluebird on Lake Mead, Nevada, last Nov. 16. He screamed through the flying spray at a speed of 286 m.p.h. on his first run over the measured kilometer and came back at just over 164 m.p.h.

The Battalion — College Station (Brazos County), Texas
Thursday, September 20, 1956
PAGE 5

TENNIS
RACKETS
BALLS
RESTRINGING
PRESSES
STUDENT CO-OP

L'L ABNER

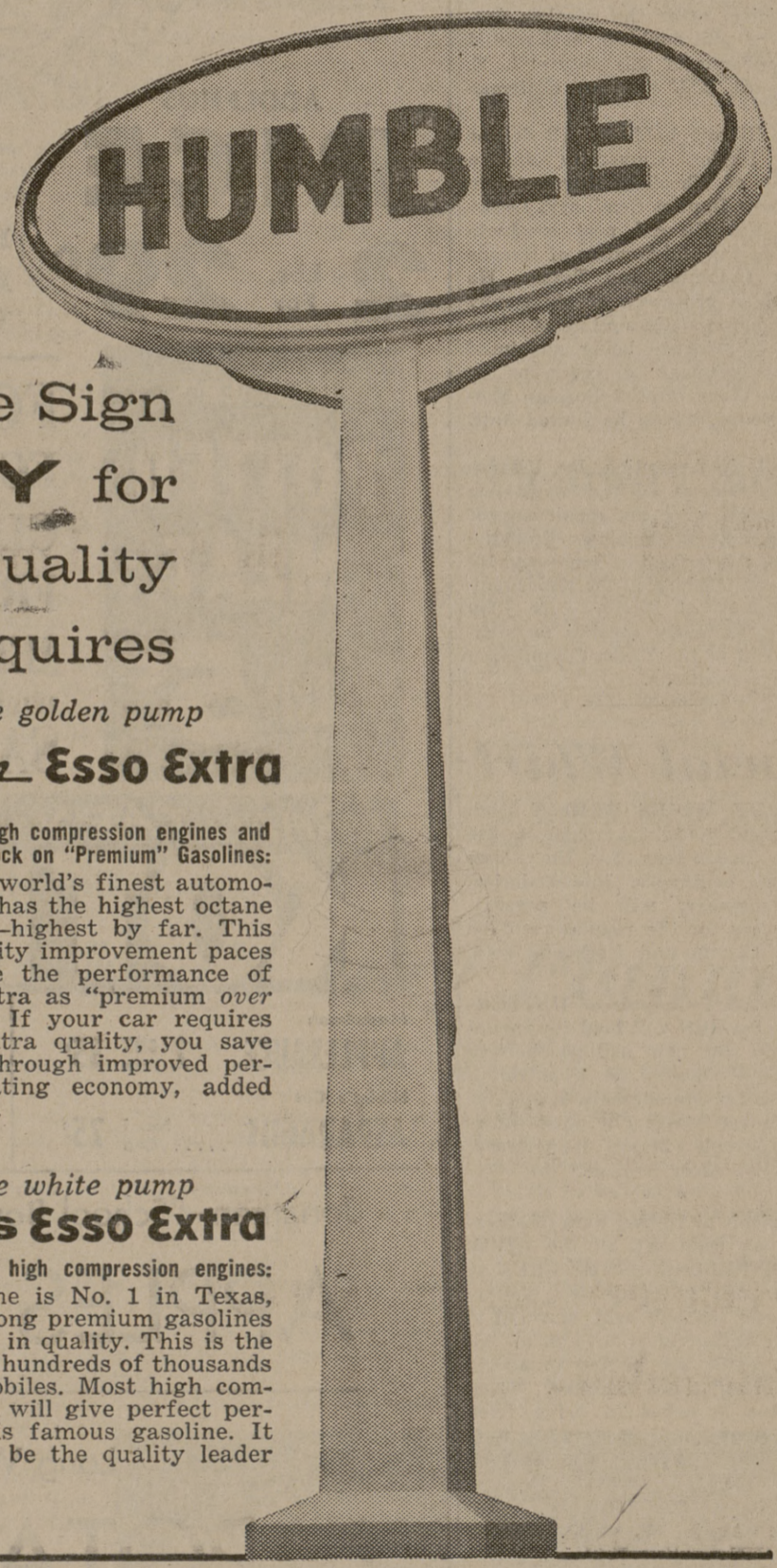


By Al Capp

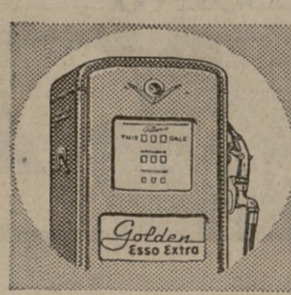
POGO



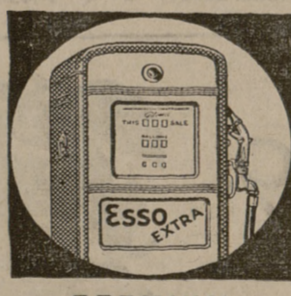
By Walt Kelly



Under the Humble Sign
You Pay **ONLY** for
the Gasoline Quality
Your Car Requires



PREMIUM
OVER
PREMIUM



PREMIUM



REGULAR

From the golden pump
Golden Esso Extra

For cars with very high compression engines and cars that tend to knock on "Premium" Gasolines:
This is the world's finest automotive gasoline. It has the highest octane rating in town—highest by far. This outstanding quality improvement paces others that rate the performance of Golden Esso Extra as "premium over premium..." If your car requires Golden Esso Extra quality, you save the extra cost through improved performance, operating economy, added gasoline mileage.

From the white pump
FAMOUS Esso Extra

For most cars with high compression engines:
This gasoline is No. 1 in Texas, first in sales among premium gasolines because it's first in quality. This is the best gasoline for hundreds of thousands of Texas automobiles. Most high compression engines will give perfect performance on this famous gasoline. It will continue to be the quality leader in its field.

From the red pump
HUMBLE Motor Fuel

For cars that perform well on Regular Gasoline:
This gasoline sets the pace for performance and mileage among the "regulars." It is the only regular gasoline in Texas that contains a patented solvent oil to keep your engine clean.

Use the gasoline
your car requires—
you'll find it
under the Humble sign!

HUMBLE OIL & REFINING COMPANY



GROCERIES		GROCERIES	
303 Cans—KIMBELL'S SMALL GREEN LIMAS . . . 2 cans	35c	303 Cans—LIBBY'S GOLDEN CREAM CORN . . . 2 cans	35c
300 Size Cans—KIMBELL'S FRESH CREAM PEAS . . . 2 cans	29c	303 Cans—LIBBY'S FRUIT COCKTAIL . . . 2 cans	49c
303 Cans—DIAMOND BRAND CUT GREEN BEANS . . . 2 cans	25c	No. 2 1/2 Cans—LIBBY'S PEACH HALVES . . . can	30c
303 Cans—GREEN GIANT BIG TENDER PEAS . . . 2 cans	41c	46-oz. Cans—LIBBY'S PINEAPPLE JUICE . . . can	29c
No. 1 Cans—NELDA BRAND TOMATOES . . . 3 cans	25c	3-pound Can CRISCO	89c
No. 2 Cans—VAN CAMP'S PORK & BEANS . . . 2 cans	35c	48 Count Pkg.—LIPTON'S TEA BAGS	pkg. 63c
MARYLAND CLUB COFFEE 1-lb. can	99c	BUTTER SCOTCH, DEVIL'S FOOD WHITE or YELLOW SWANS DOWN CAKE MIXES	pkg. 27c
PICTSWEET FROZEN FOOD		MARKET	
CUT CORN, GREEN PEAS MIXED VEGETABLES, PEAS and CARROTS . . . pkg.	19c	ARMOUR'S STAR FRYERS	lb. 39c
LEMONADE, LIMEADE . . . 2 cans	35c	WISCONSIN DAISEY CHEESE	lb. 59c
PRODUCE		DECKER'S TALL KORN SLICED BACON	lb. 49c
BANANAS 2 lbs.	25c	HORMEL'S DAIRY BRAND WEINERS	lb. 45c
JUMBO CELERY . . . 2 stalks	25c	ROUND STEAK	lb. 65c
RED TOKAY GRAPES . . 2 lbs.	25c	LOIN STEAK	lb. 65c
CALIFORNIA BELL PEPPERS . . . 2 lbs.	25c	PORTER HOUSE STEAK . . lb.	45c
SPECIALS FOR THUR. AFTERNOON, FRI. & SAT. — SEPT. 20-21-22		SQUARE CUT SHOULDER ROAST . . lb.	39c
CHARLIE'S		SHORT RIBS	lb. 29c
FOOD MARKET		FRESH GROUND MEAT . . lb.	33c
NORTH GATE — WE DELIVER — COLLEGE STATION			

BOOKS • USED and NEW • STUDENT CO-OP