



Rev. Edwin A. Svendsen Lutheran Pastor Takes Over Duties

Edwin A. Svendsen has recently arrived at College Station as the new pastor of Our Saviour's Lutheran Church and campus pastor at A&M. He is succeeding the Reverend Thomas H. Swygert.

gon where Rev. Svendsen served the Lutheran Churches of the National Lutheran Council as campus pastor at the University of Oregon.

Rev. Hall Named To Wesleyan Staff

The Wesley Foundation at A&M announces the addition of Rev. Charles E. Hall to their staff. Rev. Hall will serve as the assistant director of the Foundation working primarily with freshmen students and the general student program.

He was graduated from the University of Minnesota and had his Theological training at Trinity Seminary in Nebraska and his graduate work at the Lutheran Theological Seminary of Chicago. His twelve year ministry includes a parish ministry on an Island community in Wisconsin, chaplaincy in the Navy Corps and with the Marines, a period of service in an Oklahoma Cherokee Indian Mission and a four year directorship of the Lutheran Student Foundation of Oregon while also serving as campus pastor at Oregon State College, Corvallis.



Rev. Charles E. Hall

Reverend Svendsen is called by Our Saviour's Lutheran Church and also by the Lutheran Student Foundation of A&M College, which is a State-wide Foundation representing all the churches of the National Lutheran Council. The congregation which Pastor Svendsen will serve is by its very nature inclusive of all of Lutheranism of the National Lutheran Council. The pastor comes to this congregation from another affiliation indicating the free and open relationships which exist among Lutherans on the American scene.

Reverend Svendsen is happy about the recently completed new church building of the congregation and makes this statement: "the striking beauty of the new church and the complete break through of all that which is traditional in church architecture is deserving commendation to the designers, the builders and to the congregation. It certainly will serve as a ready tool as the church ministers to the community at large and to the campus community."

Junior Garden Club Organized; Senior Club Outlines Plans

Theme for the 1956-57 Garden Club, which held its initial meeting Monday, will be "Through the Ages". Subjects discussed on a panel moderated by Mrs. E. L. Angell, were pertinent to fall gardening. Panel members and their topics were Mrs. J. E. Roberts, "Soil Preparation"; Mrs. Carl Williams, "Perennials to Plant Now"; Mrs. C. B. Campbell, "Bulbs of All Kinds"; and Mrs. C. C. Doak, "Pests".

Mrs. W. W. Armistead, in her report "Tips for the Toiler", offered a list of annuals and vegetables which should thrive if planted at this time. The arrangements for the day, taken from the Flower Show schedule, were "Garden of Eden" and "The Stone Age". Mrs. Timm and Mrs. Nelson were in charge of these. Mrs. R. R. Lyle was winner of the door prize.

Mrs. T. R. Timm outlined plans for the establishment of a Junior Garden Club under the leadership of Mrs. Ed. Garner and herself. The organization will be open to boys and girls through the eighth grade. The program has been planned to stress the growing and arranging of plant material. First meeting will be held Saturday, Sept. 29, in the YMCA.

EXECUTIVE BOARD MEETING
The Executive Board of the Canterbury Association will meet tonight at 7:30 in the Parish Hall at St. Thomas Chapel.

Also at this first meeting of the Garden Club Mrs. W. L. Penberthy, chairman of services, announced that Mrs. C. W. Pewthers would name the committee to judge Christmas decorations and Mrs. Marion Pugh would be in charge of assembling flowers on Mother's Day. Named to the Hospital Service Committee were Mesdames E. D. Parmell, chairman, R. L. Brown, P. W. Burns, W. C. Freeman, Ed. Garner, Geo. Huebner, T. W. Leland, R. E. Patterson, and George Potter.

Social Whirl

AGRONOMY WIVES CLUB will meet tonight at 8 in the Cabinet Room, YMCA, to make plans for the year's activities. A special meeting will be held in two weeks to welcome new members, Margaret Gilmore, president, announced.

Margaret Gilmore will serve as president of the Agronomy Wives Club for the fall semester. Other officers are Esther Ellis, vice-president; Mary Lyles, secretary; Pat Stone, treasurer; Nine Johnson, reporter, and Rilene Heffner, social chairman.

The presiding officer for the Architect Wives Club this fall will be Barbara Jones. Lillian Powers will serve as vice-president; Sue Cox is secretary; and Ann McMinn

THE PRIZE IS YOURS! MAN... YOU'RE IN!

NOW, THERE'S A PRIZE I'D LOVE TO WIN!

SMELLS GRAND!
PACKS RIGHT!
SMOKES SWEET!
CAN'T BITE!

A PIPE SMOKER, TOO? mmmm! YOU'RE FOR ME!

IT'S SIR WALTER RALEIGH - NATURALLY!

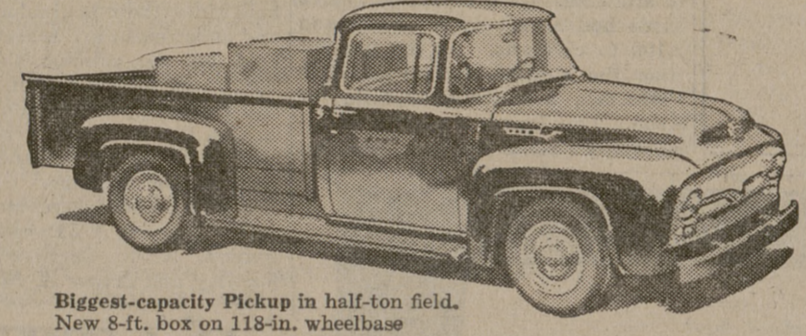
SIR WALTER RALEIGH'S BLEND OF CHOICE KENTUCKY BURLEYS IS EXTRA-AGED TO GUARD AGAINST TONGUE BITE.

FREE! 24-PAGE BOOKLET ON PIPE CARE. JUST WRITE TO: SIR WALTER RALEIGH, DEPT 781-I, LOUISVILLE, KY.

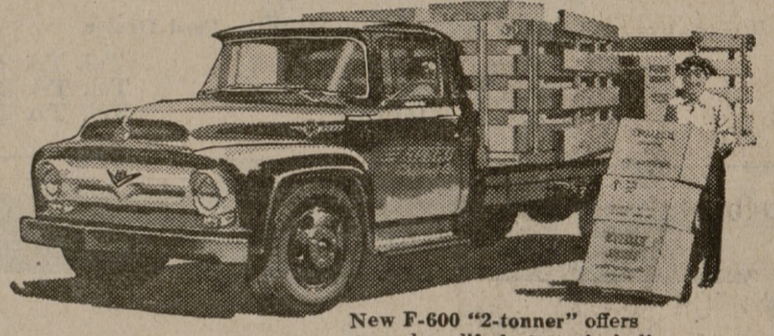
THE SPORTSMAN'S CENTER

- RIFLES & SHOTGUNS
- HAND GUNS
- AMMUNITION
- SCOPES & MOUNTS
- BOATS & MOTORS
- FISHING TACKLE

Located in the Plantation Shopping Center



Biggest-capacity Pickup in half-ton field. New 8-ft. box on 118-in. wheelbase at low extra cost.



New F-600 "2-tonner" offers many long-life features including sodium-cooled exhaust valves.



Courier Custom Delivery. Styled like the new Ford cars. Fordomatic Drive available.



Ford C-900 with 212-h.p. V-8 has 4-barrel carburetor and dual exhausts to give you power when you need it.

BEFORE YOU BUY any truck... check Ford for price, for dependable performance, for low upkeep and remember...



P-350 Parcel Delivery handles bodies up to 450 cu. ft. capacity. Fordomatic Drive, power brakes available.



Factory-built tandem-axle T-800, 42,000 lbs. GVW, 65,000 lbs. GCW. Choice of two V-8's with up to 212 h.p.

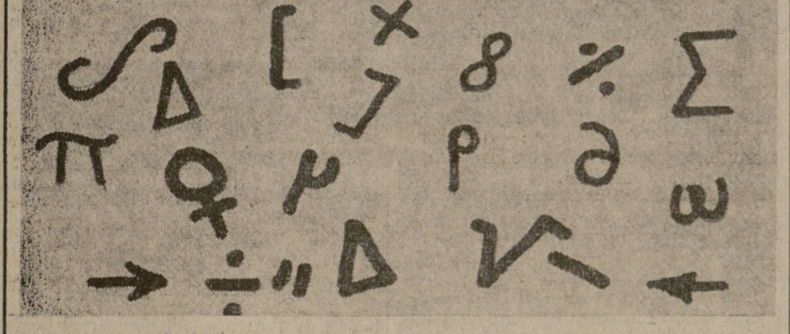
Ford has the lowest-priced truck line. A comparison of factory-suggested list prices shows that Ford has more models priced under competition than any other line. But low initial cost is only one of the reasons why Fords cost less. Take resale value. Any used-truck dealer will tell you there's always a good market for a Ford. That means a higher trade-in allowance.

FORD TRUCKS COST LESS!

Operating costs? Only Ford gives you the oil and gas economy of a modern Short Stroke engine in every truck, V-8 or Six. And Ford Trucks cost less to maintain because they're built stronger to last longer. Using latest data, life insurance experts prove Ford Trucks last longer! See for yourself why Ford Trucks cost less—yet give you far more for your money.

Phone TA 2-1333 Cade Motor Co. Bryan, Texas

YOU GET THE BEST DEAL AT YOUR AUTHORIZED FORD DEALER'S



LOOK STUDENTS!

We have hundreds of combinations of special type for your Olympia Portable! (the finest precision made portable). Also featuring the extra slip on type!

BRYAN BUSINESS MACHINE CO.
429 SOUTH MAIN STREET
BRYAN — TA 2-1328

