

building was
d boasts some
s and periodi-

Library is locat-
Building west
is across the
alized library
terinary Medi-

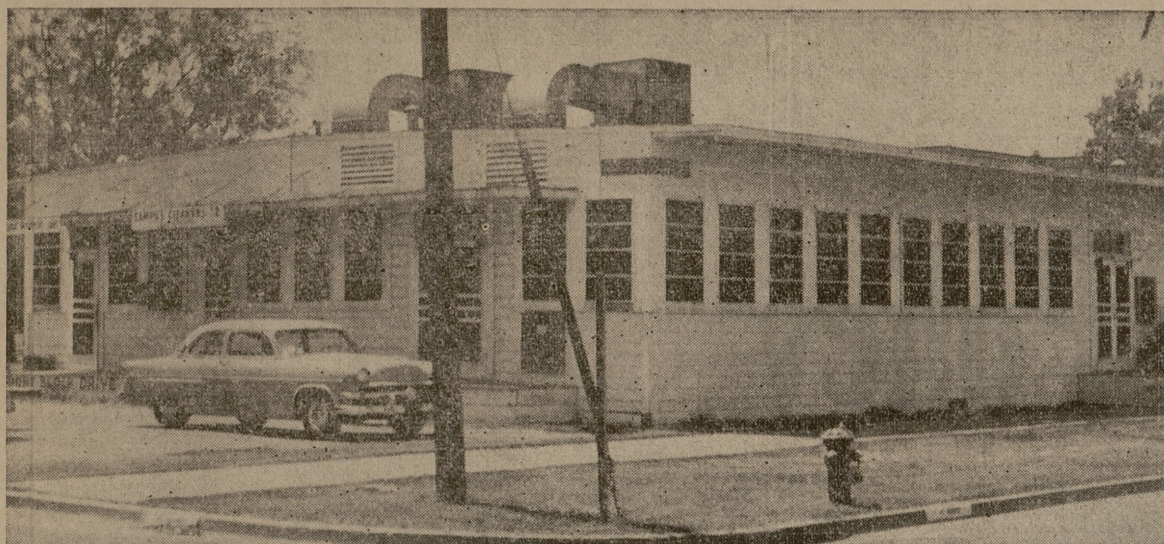
Library is
h floor of the
Another speci-
used primarily
he Division of

us Emphasis
a series of
Both married
dents attend
a are led by
experienced in

eland
re

J.
dition of our
s back to the
efore last the
e reported one
led to a 2-2
wing Thurs-
ame out in a
pened before

is playing on
22-13 victory
As you pro-
observed this
deration what
ne Kyle Field
ne Longhorns



PLACEMENT OFFICE—Home of Student Employment and Loans and the Placement Office located on the corner of Lubbock and Coke Streets across from Music Hall. W. R. Horsley directs Placement Office programs and Col. E. F. Sauer directs Student Employment and Loan operations.

Student Publications Include Newspaper, Four Magazines

As a first semester freshman your daily life will be one of many different activities, but for those who enjoy working on newspapers, magazines or your school annual you will be interested to know that A&M has five student publications.

Included among the student-written "epistles" the **THE BATTALION** the daily paper serving both the campus and the city of College Station. **THE AGGIELAND** is our annual and four magazines are published which include **THE AGRICULTURIST**, **THE COMMENTATOR**, **THE ENGINEER** and **THE SOUTHWESTERN VETERINARIAN**.

THE BATTALION is published four times a week during the fall and spring semesters and once a week during summer classes. It has a circulation of 7,500 during long semesters and its staff is made up entirely of students who work on the paper of their own free will. You do not have to be a journalism major to work on **THE BATT** as it is known as on the campus or any of the other publications. All you have to do is make it known to the student

editors you want to work and drop by the office.

THE BATTALION is a member of the Associated Press and Texas Press Association. In addition to the regular papers each week several special editions are published during the year, this edition is one of those. During the fall a Safety Edition is published and this issue has never failed to win less than third place in a national contest.

In addition to national news, campus, local and state coverage is given and **L'I Abner** and **Pogo** are regular cartoon strips. Student cartoonists draw for the paper also.

THE AGGIELAND is published once per school year and is delivered soon after the fall semester begins. This year delivery will be sometime in September. Work on the annual begins in the fall and continues until school is out in June.

Each school of the college sponsors one of the magazines. **THE AGRICULTURIST** is sponsored by the School of Agriculture and devotes its pages to a semi-technical work on agriculture. It is published

four times during the school year.

THE COMMENTATOR is sponsored by the School of Arts and Sciences and it contains articles, both humorous and serious, written by students in that field. It is published four times a year.

THE ENGINEER is a monthly publication sponsored by the School of Engineering. It contains technical writing on various subjects written by students in the field.

THE SOUTHWESTERN VETERINARIAN, sponsored by the School of Veterinary Medicine, is published quarterly and its articles are technical dealing with research and problems of medicine.

All staffs of the publications are students and you are invited to make yourself known to the persons in charge of each publication if you want to work on a publication.

Offices for all publications are on the ground floor of the YMCA. Subscriptions to all publications are included in the student activity fee and the student who pays this fee receives **THE BATTALION**, **THE AGGIELAND** and the magazine of your school.

Jobs, Money Available for Students Thru Service of Loan, Labor Office

A&M is known throughout the Southwest Conference as the "poor boys school." This is a title that a college should be proud of instead of trying to hide. It is true that it costs less to get an education here than most of our "sister" schools in Texas, and many of the students find it necessary to work at one time or another to pay either for their schooling or to cover the expenses of a Corps Trip or a date for one of the big weekends.

To make it easier for students to get jobs when they need them the college operates the Office of Student Employment and Loans, which is a part of the Placement Office and is under the direction of Col. Edward F. Sauer.

If you are interested in working while at A&M write the Office now for information. The address is: Office of Student Employment-Texas A&M College-College Station, Texas.

Get your application in fast for the jobs go quickly when the fall semester begins.

College counselors will warn you of one important fact - Don't try to work too much during your first semester at college! The adjustment to the college routine is hard enough without trying to work eight hours a day on top of it.

College officials also suggest you do not plan on earning more than half your money while in school. Getting a college education in itself is more than a full-time job for most persons.

To hold a student job, you must be in good scholastic standing and due to shortage of jobs ordinarily only those students who actually need help in getting through school are considered for positions.

Student Loans
The other half of the Student

Labor and Loans office is devoted to handling student loans.

The office does not try to help you borrow enough money to pay your way through school, but rather this loan service is designed to help students through those "tight days" when you find yourself in need of a few dollars in case of emergency. These are strictly "honor" loans and no collateral is required-you simply walk in and tell Col Sauer how much you need, and if you wish-what for and if the money is available you will get it.

The maximum amount that can be loaned is \$20 for a maximum time of 30 days. Payment must be made in cash and while no interest rate is charged a small contribution

is expected to offset losses and operating expenses of the office.

The Loan Office has an operating capital of \$9,500. During 1955-56 5,800 loans were made to students averaging \$10 to \$20. Thus, some \$90,000 passed through the accounts.

These loans are made available by contributions from former students, A&M Mothers' Clubs and memorial funds.

The Placement Office is operated in the same building with the Loan and Labor Office. This office operates primarily to help graduating seniors in finding jobs.

Last year 1,304 employers contacted graduating seniors through this office with job calls. Over 350 individual and ground interviews were set up to handle this load.

Clothing, Laundry No Problem at A&M

Entering freshmen will be interested to know that the clothing and laundry problem at A&M is a relatively simple one.

The student who is going to be in the Corps of Cadets will have most of his clothing issued to him. However, it is usually necessary that he buys another pair of shoes, some socks, and a pair of serge trousers.

The non-reg or civilian student should bring along the same type of clothing that he wears at home. He should have some sport shirts and pants, a suit for church and special occasions, and a pair of bluejeans that he can loaf around in.

One the whole, the winter at A&M is mild, yet, there are a few bitterly cold days. The civilian student should bring along at least a few articles of winter wear.

During fish week, the entering freshman must go to the college laundry, where he will be assigned a laundry mark and told when and where to deposit his soiled clothing.

All students are able to have 23 pieces of clothing cleaned each week for 75 cents.

SERVING BRYAN and COLLEGE STATION

SAM HOUSTON ZEPHYR
Lv. N. Zulch 10:08 a.m.
Ar. Dallas . . 12:47 p.m.
Lv. N. Zulch . 7:28 p.m.
Ar. Houston . 9:15 p.m.

Rock Island N. L. CRYAR Agent Phone 15 NORTH ZULCH **Burlington Route**

READING TIME 45 SECONDS

PORTABLE TYPEWRITERS

OLYMPIA—Remington Office Writer—Royal—Smith-Corona and Underwood

As long as you are in A & M, bring your portable in. We will blow the dust and lint out with compressed air, lubricate and install a new ribbon, and only charge you for the ribbon.

ENGINEERING STUDENTS

The Olympia Portable Typewriter has a standard keyboard, plus two extra keys (+ over =), (! over %) also HALF SPACING for writing EXPONENTS, SUBSCRIPTS, and FORMULAS. Furnished in 9 1/2" and 13" carriage. We carry a complete line of special characters which is installed here in our shop while you wait.

Use our Rental Purchase Plan \$6.00 per month, rent applies on purchase of machine, also late model standard TYPEWRITERS AND ADDING MACHINES FOR RENT.

The OLYMPIA Standard Typewriter is catching on fast.
L. H. ADAMS

Bryan Business Machine Co.

SALES — SERVICE — RENTALS — TERMS
429 South Main Street — Bryan, Texas
FREE PARKING AIR CONDITIONED

FRESHMAN---WELCOME

ZUBIK'S—The One Stop Service Center For Uniform Requirements Welcomes You

Khaki Slacks \$5.95

(Including Alterations)

Khaki Shirts \$4.00-\$4.75-\$5.95

(We Form Fit Shirts and Sew On Patches at Small Additional Cost)

- WE HAVE -

REGULATION CAPS, SOCKS, BELTS, TIES, SHOULDER PATCHES, ALL BRASS INSIGNIAS

FRESHMAN GREEN SLACKS . . \$23.00

Tailor Made To Your Individual Measurements Right Here In Our Own Shops At College Station — One Week Delivery Required Only — You Try Them On And See How They Fit Before You Buy — GUARANTEED TO FIT

CIVILIAN DEPARTMENT

*Latest Styles and Patterns in Dress Slacks and Sport Coats
Western Hats by "Davis"

ALTERATION DEPARTMENT

We Maintain an Experienced Alteration Department for Everything We Sell or On Your Own Personal Clothing — Bring Us Your Issue Uniform for Alterations and Patch Sewing

ZUBIK'S UNIFORM TAILORS

Second Generation of Tailors

105 N. Main — North Gate