

MISSION WORK—Four local residents traveled 1,200 miles to Old Mexico to help with repair and construction work of the Agriculture and Industrial Education Mission. The local persons who journeyed were the Rev. and Mrs. Charles Workman and Mr. and Mrs. Emanuel Mack. Above another team member carefully surveys the agricultural improvements.

Local Residents Travel 1200 Miles to Assist Mission

By BARBARA PAIGE
Battalion Woman's Editor
Four College Station residents have returned from a 1200 mile trip to old Mexico where they spent six week teaching everything from Bible lessons to proper sanitation processes at the Agricultural and Industrial Education Mission.

Making the trip to Teloloapan, Guerrero, Mexico were Rev. and Mrs. Charles Workman and Mr. and Mrs. Emanuel Mack.

Rev. Workman, who is college chaplain at the A&M Presbyterian Church and Mack, who is an industrial education teacher at Lincoln High School, were part of a 13 man crew that worked on improvements at the Mission and surrounding farms and villages.

Gerald Nash, sophomore I. Ed. student here, and Jack Rowe, June architect graduate of A&M, accompanied the Workman's and Macks on the trip.

"Although we completed a lot

of work projects that were needed at the Mission," says Rev. Workman, "we feel that we accomplished more by helping them to help themselves. We showed them how to use the resources they had on hand."

They refilled a wash-out road which was the only car route to the Mission, rebuilt wash-out flood control and water conservation dams, installed window panes, repaired mobile power generator for Mission, modernized plumbing for bible school class, among many other projects.

Since the villages surrounding the Mission had no plumbing of any type, sanitation was a great problem. Rev. Workman and his group assisted in the proper procedure for these villages to use in maintaining more healthful conditions.

Mack, who is an accomplished basketball player, instructed the youth of the towns in basketball while Rev. Workman instructed in tennis.

Family Favorites

by Mrs. Melvin C. Schroeder

Betty Jo is the wife of Dr. Schroeder who has been with the Geology department for two years. They live at 404 Jane Street in College Station with their son, Robin, and daughter, Carol Anne. The Schroeder's hail from Washington State.

CARAMEL CAKE

2 cups brown sugar
2 cups sifted flour
½ cup margarine or butter (¼ pound)
1 cup sour milk or cream
1 t. soda
½ cup nuts
cinnamon

Pinch brown sugar, flour and margarine with fingers until crumbled good. Put half in bottom of greased 8 x 8 or 9 x 7 inch greased pan. Then add sour milk or cream to soda. Add rest of crumbs to sour milk mixture and pour on top of crumbs in pan. Pour nuts and cinnamon over top. Bake in 350 degrees oven about 40 minutes. Do not open oven for first 30 minutes.

EVERYDAY MEAT LOAF

¾ cup dry bread crumbs
1 cup milk
1½ lb. ground beef
2 slightly beaten eggs
¾ cup grated onion
1 t. salt
½ t. pepper
½ t. sage

Soak bread crumbs in milk; add meat, eggs, onion, and seasonings; mix well. Form in individual loaves and place in greased muffin pans. Cover meat loaves with Piquant Sauce (recipe given below). Bake in moderate oven (350 degrees) for 45 minutes. Serves 8. Or form in single loaf in 4 ¾ by 8 ¾ inch loaf pan. Spread sauce on top and bake 1 hour.

PIQUANT SAUCE

3 T. brown sugar
¼ cup catsup
¼ t. nutmeg
1 t. dry mustard

Combine all ingredients for sauce.

DATE PINWHEELS

2¼ cups chopped dates
1 cup sugar
1 cup water
1 cup chopped nutmeats
½ t. soda
1 cup shortening
2 cups brown sugar
3 eggs, well beaten
4 cups sifted flour
½ t. salt

Combine dates, granulated sugar and water in saucepan and cook over low heat until thick. Add nutmeats and cool. Meanwhile cream shortening; add brown sugar. Add beaten eggs and beat well. Add remaining ingredients sifted together and mixwell. Divide mixture into two parts and roll each out separately into a rectangle about ¼ inch thick. Spread with date filling and roll up into two long rolls. Chill over night. Slice. Bake. Makes about 100 cookies.

APPLESAUCE CAKE

2 cups sugar
¾ cup shortening
2 - 3 eggs, beaten
3 cups applesauce
3 cups sifted flour
2 level t. soda
½ t. cinnamon
½ t. nutmeg
cloves
1 cup raisings
1 cup nuts.

Thoroughly cream shortening and sugar. Add eggs and beat well. Add applesauce then sifted dry ingredients. Beat smooth and fold in raisings. Bake in waxed-paper-lined pan in moderate (350 degrees) 45 to 60 minutes.

FRUIT SHERBET

1 banana
¾ cup sugar
juice of 1 lemon
juice of 1 orange
1 cup top cream
1 cup milk

Crush banana with sugar. Add juice of lemon and orange. Combine with top cream and milk. Freeze, stirring about every hour until frozen.

SPECIALS FOR THURSDAY, FRIDAY AND SATURDAY, AUGUST 9, 10, 11



MORE MEAT for the MONEY

U. S. GOOD
VEAL SALE

U. S. GOOD

POT ROAST

VEAL
LB.

23c

U. S. GOOD

SHOULDER STEAK LB. 29c

U. S. GOOD

VEAL CHOPS LB. 35c

U. S. GOOD

RIB STEW MEAT LB. 15c

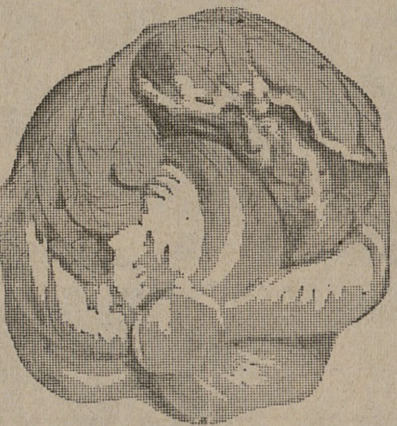
FRESH GROUND

HAMBURGER LB. 23c OR 3 LBS. 65c

BACON BLACKHAWK LB. 49c SUNVALE LB. 35c

BOLOGNA JUMBO SLICED—LB. 29c

Helene Curtis
SPRAY NET
1.25 size for 99c



SKYWAY STRAWBERRY BIG
PRESERVES 20 oz. DECORATED TUMBLER 35c

LETTUCE FRESH HARD HEADS EACH 10c

CALIF. POTATOES ALL PURPOSE 10 LB. BAG 48c

SUNKIST LEMONS JUMBO SIZE 12 FOR 37c

Lilly Mellorine

½ Gal. Round Ctn. 59c

½ Gal. Square Ctn. 49c

VITALIS

Hair Tonic
2 29c Bottles For 39c

Start Now Collecting Our Beautiful "SERENADE"

DINNERWARE

SPECIAL THIS WEEK—With Each \$5.00 Purchase
SALAD PLATE 55c Value Special 19c

FROZEN FOOD

Morton's Fresh Frozen
Chicken, Beef or Turkey
Pot Pies, 3 8-oz. for 79c

Homo Breaded
Shrimp 10-oz. pkg. 49c

Pasco—6-Oz. Cans
Orange Juice, 2 cans 29c

Frozen Delaware
Punch, 2 6-oz. cans 27c

SWINDLER'S WHITE

EGGS

LARGE DOZ. 49c

Renown Whole

GREEN BEANS, No. 303 can 23c

Welch's

GRAPE JUICE, 24-oz. bottle 35c

Del Monte Early Garden

PEAS No. 303 Can 15c

★ TWO CONVENIENT LOCATIONS ★

SUPER ORR'S MARKETS

BEST IN BRYAN

200 E. 24TH ST.

3516 TEXAS AVE.

Number 1



VISITING
Texas Co.
Medicine;
officer, Au
office, Au

Bud

Visi

Members of
Budget Board
of the legisla
on the campu
day involving
the A&M Sys
years.

Examining
West, memb
budget board
Evengra, me
budget board
executive di
Commission f
and Johnny
aminer for T
Higher Educa
Together v

Kiwa

For

A stirring
financial" hel
lege Station
Tuesday meet

J. O. Alex
bourne appea
of the club f
taking to see
Clinic built in
Bryan area.

Speaking fr
ander told K
he and Chad
children and
about 15 mi
around a chi
to wring you

Outlining a
Alexander to
clinic his gro
placed here
dren with al
diseases inste
ualize. The
free to those
to pay."

When asked
doctors in th

Keep C

B

By JO
Battalion

Rabies cou
large numbers
recently in
Bryan area
urged to keep
from sick or

Dr. E. S. Fre
Health Unit
John P. De
partment of
ogy, has disc
length with R
State Public
ing these di
found this inc
time bats hav
in the same r

"One Texas
enced the sam
ing only has
said, "At that
terminated to b

Delaplane a
has observed
have not bee
they seem to
of orientation
When asked