

## Purveyear Leading Walton One Game In Softball Race

One Army Lou's Purveyear nine remained undefeated after another week of softball activity with Walton running a close second only one game behind.

Wednesday, June 13, Walton defeated Law, 6-5. "Chick" Dvorchek pitched a brilliant game and added two hits to help his own cause. Matt Coyle turned in some fancy fielding at third base for the Law softballers. Thursday College View "A" beat Law, 7-3, and Walton romped over College View "B", 13-0. Monday's games were cancelled because of rain.

Dvorchek pitched Walton to a 10-0 win over Dorm 16 and Purveyear turned in a 8-0 win over the Law nine. J. B. McLeRoy pitched a no hit, no run game against Law, facing only 13 batters as the game was called after four innings. Morris "Snuffy" Rogers handled seven chances without a bobble and hit a bases loaded tripple in the fourth inning. Dick Crews played flawless

ball afield and added a double to start the third inning for the Purveyear boys. Jerry Cobb and Bill Fuller followed with two doubles to put the game on ice.

Walton romped over College View "A", 11-2, in the first game Wednesday night. In the late game, Purveyear mauled College View "B", 20-0. Ted Reymann collected two hits for the losers. Cobb and Crews each picked up two hits for Purveyear. Harold Fritts pitched good ball, striking out four men in his three inning stint for Lou's boys. Steve Long homered in the last inning for the winners.

The league standings are as follows:  
Purveyear 4 wins and no losses.  
Walton 4 wins and 1 loss.  
Law 2 wins and 2 losses.  
College View "A" 1 win and 3 losses.  
College View "B" 1 win and 3 losses.  
Dorm 16 no wins and 3 losses.

## Nat'l Records Set At Jamiaca

A&M set three new national records as they downed Jamiaca, 58-38, in a dual meet on June 7, 8, and 9.

The new records were set by Dick Hunkler and Jerry Mount in the freestyle relay, by Rippy Woodard in the Butterfly event, and by the medley relay team which consisted of Norman Ufer, Dick Weick, Woodard, and Hunkler. The A&M team dominated all the swimming events except the two 1-1 lengths freestyle. Weick placed second behind Woodard in the Butterfly event.

The Aggies didn't fare quite so well in the water polo games, losing two out of three to the Jamiaca team. A&M won the first game, 7-6, then dropped the next two, 7-5 and 7-4. Team members were Bruce Martin, Henry Goff, Charles Maynard, Don Pever, Ufer, Hunkler, Woodard, Mount, Spike, and Weick.

## Little League Statistics

By MAURICE OLIAN  
Battalion CHS Sports  
Correspondent

Danny Feldman, of the Marion Pugh Lumber Co. White Sox, continues to dominate the batting statistics of the College Station Little League. He leads, or shares the lead, in seven different batting departments.

His average of .667 paces the loop's hitters, with the Black Pharmacy Senators' Joe Olian second at .588. Others batting over the .400 mark are Larry Randolph, of the Student Co-op Orioles, .450; the Senators' Harry Lewis, .444; Jody Rush, of the Senators, .438. The Orioles' Jackie Ross, .381; Eldon Hagler, of the V. F. W. Red Sox, .333; the Orioles' Bill Berry and George Outlaw, both at .316; and the Senators' Sidney Coufal, .278, round out the list of the league's top ten batters.

Feldman tops the loop in stolen bases, 5, total bases, 17, runs, 10, and shares the lead in base hits with Olian, 10, and in home runs with Berry, each having hit two out of the park. Olian, Berry, and the Senators' Jimbo Carroll have each stolen a total of four bases. Randolph has 15 total bases and Berry ranks next with 13 total bases. A close second in runs are Randolph and the White Sox' Harold Cooner, both having scored nine.

Pacing the group in runs-batted-in is Outlaw, with 10, and in doubles it is Randolph, with 6 to his credit. Randolph has 9 R. B. I. to place second in that department, while a quartet of players of have two doubles apiece—Coufal, Ross, the Red Sox' Jack Fugate, and Larry Lewis, of the Senators.

In slugging percentage, Feldman's tremendous 1.133 is easily the best mark. Trailing him, in order, are Randolph, .750; Berry, .684; Olian, .588; Rush and Harry Lewis, each slugging .500.

Several pitchers won fine earned-run-averages, the Senators Johnny Williams has the best, a terrific 0.94. Behind him come Olian, 1.000; the White Sox' Ozzie Burke, 1.50; Larry Godfrey, of the Senators, 1.86; the Red Sox' Eldon Hagler

and the White Sox' John Stark, both possessing marks of 2.00.

A trio of White Sox hurlers—Feldman, Burke, and Stark—have perfect 2-0 records to lead the loop percentage-wise. The Senators' Godfrey has a 1-0 slate for a 1.000 percentage, but he has not won as many games as the White Sox' pitchers.

Burke, Feldman, Hagler, Ricky Howard, of the Red Sox Olian, and Stark have pitched two complete games apiece to pace the league in that department. Pitching the most innings have been Burke, Hagler, Olian, Ross, and Stark, all of them having hurled twelve innings apiece. In a hot three-man battle for the league strike-out leadership are Feldman and Randolph, each having fanned a total of 19, and Olian, who has whiffed 16 batters.

## Cattle Lab

(Continued from Page 1)

scientific positions; NOT close to an industrial, metropolitan strategic area.

3. Accessibility — near major railroad and airline connections on a site adjacent to permanent hard-surfaced roads.

4. Land—200 to 400 acres will be needed.

5. Construction costs—high cost areas will be avoided.

6. Utilities — a. Water—250,000 to 300,000 gallons potable water per day required.

8. Sewage—Provision for disposition of 150,000 to 200,000 gallons of sterile and treated effluent per day required.

c. Electricity — 4,000 to 4,500 kilowatts per hour connected load required.

7. Availability per year of 1,000 each locally produced cattle, swine, sheep.

After hearing all proposals the committee will select from three to five locations for on-the-ground consideration. These locations will be visited then the committee will present their recommendations to the secretary of Agriculture.

## Locals Attend Lufkin Tourney

Five local tennis players, sponsored by the College Station Recreational Council, will be among the eighty entries in the fifth annual Lufkin Invitational Tennis Tournament today through Saturday.

Tennis instructor Horace Schaffer left at 5 a.m. today with the following College Station netters: Don Averá, Susan Dowell, Margaret Manthei, Betty Mead, and Pam Sperry. All of them will compete in singles, with Miss Mead and Miss Manthei pairing up in doubles and Miss Sperry and Miss Dowell doing likewise. Averá will choose his partner when he gets to Lufkin.

This is the first tournament of the summer for the local netters, but several others are presently scheduled.

## The Grove Schedule

The following movies are scheduled at The Grove next week:

Thursday  
I REMEMBER MAMA with Irene Dunn and Barbara Bel Geddes.

Friday  
No show.

Saturday  
LURE OF THE WILDERNESS in Technicolor with Walter Brennan and Jean Peters.

Sunday  
BOWERY BOYS MEET THE MONSTER with Leo Gorcey and Huntz Hall.

Wednesday  
SNOWS OF KILIMANJARO with Gregory Peck, Ava Gardner and Susan Hayward.

AVEOS... (the GREEKS had a word for it)

the word is

### COMFORT

yours when you fly  
CONTINENTAL AIR LINES



DALLAS 1 hr. 40 mins.

LUBBOCK 4 hrs. 8 mins.

NEW YORK\* 8 hrs. 21 mins.

\*Via connecting airline  
Call Continental at VI 6-4789.

Continental AIR LINES

# STOP LOOK SAVE

## LOW FOOD PRICES!

### ★ GROCERIES ★

1 Pound Can  
MARYLAND CLUB COFFEE .98c  
Libby's—303 Can  
PEACH HALVES . . . . can 25c  
Libby's—No. 1 Flat Cans—SLICED  
PINEAPPLE . . . . 2 cans 33c  
Armour's Star—12 Oz. Can  
CHOPPED HAM . . . . 51c  
Diamond Brand  
SOUR PICKLES . . . quart 25c  
Texsun—46 Oz. Can  
GRAPEFRUIT JUICE . . . . 25c  
Green Giant—303 Cans  
BIG TENDER PEAS . . . 2 cans 43c

### ★ FROZEN FOODS ★

— PICTSWEET —  
Cut Golden Corn, Green Peas  
Peas & Carrots, Chopped  
Spinach, Mixed Vegetables . . . . 19c  
BABY LIMAS . . . . Pkg.  
FORD HOOK . . . . 28c  
LIMAS . . . .

### ★ PRODUCE ★

Home Grown  
CUCUMBERS . . . . 2 lbs. 15c  
Home Grown  
TOMATOES . . . . lb. 17c  
New Hampshire—Midget  
WATERMELONS . . . . each 15c  
Texas Grown  
PEACHES . . . . lb. 15c

### ★ GROCERIES ★

Libby's—303 Cans—SMALL  
WHOLE BEETS . . . . 2 cans 33c  
Texsun—No. 2 Cans  
GRAPEFRUIT JUICE . . . 2 cans 25c  
3 Pound Can  
CRISCO . . . . .89c  
Kimbell's—303 Cans—WHOLE  
GREEN BEANS . . . . 2 cans 41c  
Rose Dale—303 CANS—GARDEN SWEET  
PEAS . . . . .2 cans 29c  
1 Pound Package  
LIPTON'S TEA . . . . \$1.19  
Libby's—303 Cans—GOLDEN CREAM STYLE  
CORN . . . . .2 cans 35c

### ★ MARKET ★

LOIN STEAK . . . . lb. 69c  
T-BONE STEAK . . . . lb. 69c  
VEAL CHOPS . . . . lb. 59c  
PORTER HOUSE STEAK . lb. 43c  
SHORT RIBS . . . . lb. 29c  
Square Cut  
SHOULDER ROAST . . . lb. 39c  
CALVES LIVER . . . . lb. 49c  
Wisconsin Mild Cured  
CHEESE . . . . .lb. 59c  
LARGE BOLOGNA . . . lb. 39c  
Armour's Spiced  
LUNCHEON MEAT . . . lb. 39c

# CHARLIE'S FOOD MARKET

NORTH GATE — WE DELIVER — COLLEGE STATION  
SPECIALS FOR THUR. AFTERNOON, FRI. & SAT.—JUNE 21 - 22 - 23

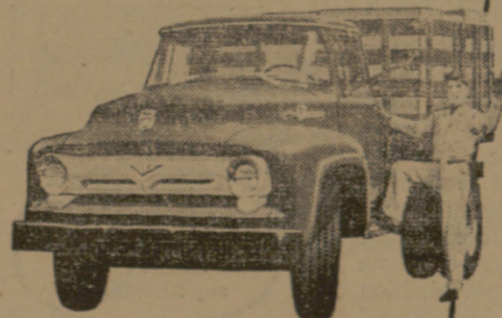
# Ford Trucks Cost Less!

When you take everything into consideration, you'll agree it costs less to own a Ford Truck. Ford costs start low—Ford costs stay low!

You probably know that the factory-suggested list prices of Ford Trucks are scaled down with the lowest. What you may not know is that Ford Truck models are below all competitive makes.

And Ford Truck costs are cut by resale value. It stays high—thanks to the big demand for used Ford Trucks.

Operating costs? Only Ford gives the oil and gas economy of a modern Short Stroke engine in every truck, V-8 or Six. Maintenance costs? Fords are built stronger for proven longer life!



Widest range of Short Stroke power in the 2-ton field! New Ford F-600 gives choice of Short Stroke Six and three Short Stroke V-8's, to 168 h.p. Max. GVW 19,500 lbs.

No other truck at any price gives you all these Ford features!

- Only Ford gives you modern Short Stroke power in every engine in the line, V-8 or Six.
- Ford F-100 Pickup, shown, gives you the widest standard rear window of any truck cab.
- No other pickup gives you Ford's centrifugal-design clutch . . . for stronger engagement, longer life.
- The Ford Pickup's axles are engineered for heavier loads than any other half-tonner. Up to 400 lbs. more combined capacity!
- In heavy-duty models, Ford offers

you a combination of long-life engine features found in no other line of trucks . . . such as stress-relieved cylinder heads, and sodium-cooled exhaust valves faced with tungsten-cobalt that run cooler, last up to five times longer.

• Only Ford Trucks give you the Drierized Cab for tops in comfort. Custom Cab has five inches of foam rubber in the seat, plus three inches in the seat back.

• Only Ford gives you Lifeguard steering wheel and safety door latches standard in all cabs.

## Ford Trucks Last Longer!

Using latest registration data on 10,502,351 trucks, life insurance experts prove Ford Trucks last longer.

BIG FLEET OWNERS BUY MORE FORD TRUCKS THAN ANY OTHER MAKE!

Phone TA 2-1333

Cade Motor Company

Bryan, Texas