

Churches Change Schedule

Wesley Foundation
 Vespers will be held tonight, Monday and Tuesday from 7 to 7:15 p. m. in the sanctuary of the A&M Methodist Church. Aggie Sunday School class will meet at 9:45 a. m. with Dr. Bob Shrode, professor of genetics at the college, serving as instructor. Wednesday a swimming party will be held in Navasota with students meeting at the Methodist Student Center at North Gate.

St. Mary's Catholic Chapel
 Mass is held every weekday at 6 a. m. and confessions are heard from 6:30 to 7:30 p. m. Saturday and preceding Sunday mass. The summer schedule for Sunday mass will be 7 and 9 a. m. Father Charles Elmer will conduct mass.

St. Thomas Episcopal Chapel
 Rev. Robert Darwall will deliver the sermon "The Divine Search" Sunday at 9:30 morning prayer and sermon. Holy Communion will be held at 8 a. m. and Church School will begin at 9:30. Ice tea will be served in the Parish Hall following the 9:30 service.

Church of Jesus Christ of Latter Day Saints

Services will be held at 10: a. m. Sunday in the YMCA Chapel.

Christian Science Society
 "Is the Universe, including man, evolved by atomic force?" is the sermon topic for the 11 a. m. services Sunday. Church School will begin at 9:30 a. m.

Church of Nazarene
 Sunday School will begin at 10 a. m. followed by morning worship services at 11. Nazarene Young People's Society will start at 7 p. m. with Evangelistic services at 7:45.

Our Saviour's Lutheran Church
 The Rev. R. F. Brehmen of Texas Lutheran College will conduct the 10:45 a. m. worship services Sunday. Church School will start at 9:30.

A&M Presbyterian Church
 Rev. Norman Anderson, pastor, will deliver the 8:45 a. m. worship service on "Is the trend toward Christianizing Society or Secularizing the Church?" Church School will be held at 9:45.

Faith Evangelical and Reformed Church

Raymond Buck, Jr. will conduct the worship services at 10:30 a. m. Sunday. "The Perfect Squelch" is the sermon topic. Church School will be held at 9:15 and evening services will be held at 7:30 with

K&B DRIVING RANGE

— Is Now Open —
 Mon. thru Fri. — 4 P.M. till?
 Sat. & Sun. — 10 A.M. till?
 Fin Feather Rd. Bryan

"The Wicked Husbandmen" as the sermon.

First Baptist Church
 Rev. Robert D. Longshore will conduct the 11 a. m. worship services Sunday following the 9:40 Church School Training Union will begin at 7 a. m. with evening worship scheduled for 8. Wednesday the Teacher's meeting will precede the 7:30 prayer meeting.

A&M Methodist Church
 Rev. Nolan Vance will have as his sermon topic "With Father at Home" for the 10:55 a. m. services Sunday. Sunday School will begin at 9:45. Senior MYF will meet at 6:30 p. m.

A&M Christian Church
 "Fatherly Qualities" is the topic for the Father's day sermon to be delivered at 11 a. m. services Sunday by Dr. W. C. Jones, pastor in the absence of Rev. Clarence Ketch. Coffee will be served preceding Sunday School at 9:45.

College Heights Assembly of God

Sunday School will begin at 9:45 a. m. followed by worship services at 11. Christ Ambassadors will start at 6:30 p. m. preceding the evening services at 7:30.

Bethel Lutheran Church (Missouri Synod)

The Rev. Paul Schroeder will be in the pulpit for the next four Sundays in the absence of Rev. William C. Peterson, pastor, who will be attending a conference in St. Paul, Minn. Sunday School will start at 9:30 a. m. followed by morning worship services at 10:45. There will be no Wednesday night vespers during the pastor's absence.

Church of Christ

"The Woman's Work in the Church" is the sermon topic for 10:45 a. m. services Sunday. Church School will begin at 9:45. Young People's Class will meet at 6:15 p. m. followed by evening service at 7:15 which will feature "Studies from the Book of James." Sunday's series in the studies will be entitled "Trials from Without." Wednesday mid-week services will begin at 7:15 p. m.

Marie Francklow Has Served As Secretary Since 1925

By BARBARA PAIGE
 Battalion Woman's Editor

On Nov. 1, 1925 Marie Francklow began working for the Agricultural Experiment Station as secretary for J. M. Jones not knowing that the next 31 years would find her working as secretary to eight other heads of various departments.

The daughter of a North Dakota minister, Mrs. Francklow attended 14 grade schools while her father traveled through the state. She received her degree in liberal arts from Fairmount College in Wichita, Kan. which is now known as Wichita University.

"I had been in Dallas a short while looking for a job when I was introduced to Louise Hillyer, then Registrar for A&M," said the quiet speaking lady, "She talked me into coming to College Station and I've been here ever since."

"In 1925 all the secretaries used to meet during the noon hour, in the lobby of the YMCA and sit in front of the fireplace sewing, knitting, crocheting and talking. That was before the solariums were built," she said.

"Since you couldn't buy food anywhere on the campus, we used to have a luncheon club on the third floor of the 'Y' with about 25 or 30 secretaries. We had regular club dues, menu committees, and a negro woman who would cook for us," she said.

Unfortunately, when asked what became of the club, they had disbanded . . . ptomaine poisoning.

Following her secretarial work for Mr. Jones, she became the secretary of H. H. Williamson of the Extension Service, then D. W. Williams, vice-chancellor for Agriculture, who at that time was head of the Animal Husbandry Department.

"I was secretary to E. R. Alexander, head of Agriculture Education Department until 1941 when I went to the Student Publications and Activities Department," she said.

In 1944 she assisted J. W. Rollins for a year as they mapped out the new Student Affairs Department. When W. L. Penberthy was made the first Dean of Men, Mrs. Francklow became the first secre-

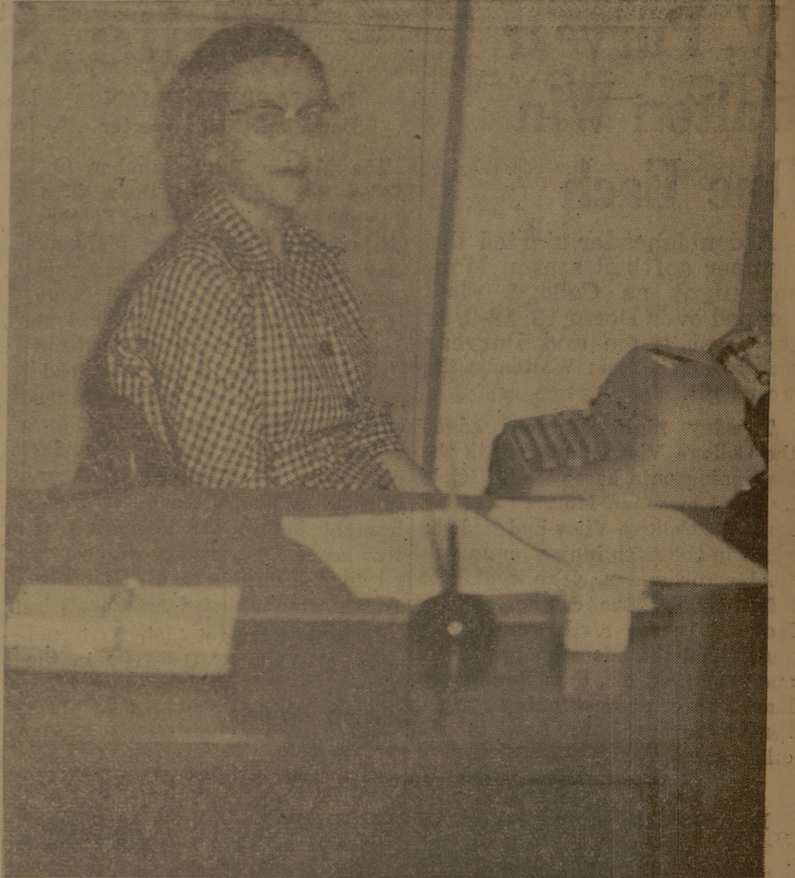
tary to the Dean of Men. Penberthy was appointed Head of Student Activities in 1954 and the traveling secretary assisted Bennie Zinn, who was acting Dean of Men at that time.

Then as the months start passing by Robert B. Kamm was appointed Dean of Basic Division and Student Personnel Services and once again Mrs. Francklow has a "first" down on her list as she becomes secretary to the first Dean of the combined Basic Division and Student Personnel Services.

Thinking back on the past Mrs. Francklow remembered the old inter-urban train that ran between College Station and Bryan.

"It was a crazy little thing," she laughingly told us, "you never knew how long it would take you to get to your destination . . . when it was running it would leap and lurch, and then lurch to fast, and off the tracks it would go."

The secretary married Kelly Francklow, who was employed at the Experiment Station when Marie first started working there. They have a daughter and three grandchildren now, some 31 years after they met and married.



MARIE FRANCKLOW—Mrs. Francklow, secretary to the Dean of Basic Division and Student Personnel Services Robert B. Kamm, has served with nine departments since her first position in November, 1925.

ENGINEERING AND ARCHITECTURAL SUPPLIES
 BLUE LINE PRINTS
 BLUE PRINTS • PHOTOSTATS
SCOATES INDUSTRIES
 603 Old Sulphur Springs Road
 BRYAN, TEXAS

PROMPT RADIO SERVICE
 — Call —
SOSOLIK'S RADIO AND TV SERVICE
 713 S. Main St.
 (Across from Railroad Tower)
 PHONE TA 2-1941 BRYAN

OPEN FOR ALL BANQUETS, DINNERS
 RECEPTIONS, WEDDINGS AND LUNCHEONS
MAGGIE PARKER DINING HALL
 TA 2-5089
 "The Oaks" — TA 3-4375
 BRYAN

"Good food that's all"

Kelley's Restaurant

PAY LESS SAVE MORE HERE

<p>★ GROCERIES ★</p> <p>303 Can—Monarch Desert—In Syrup RED CHERRIES can 27c</p> <p>Libby's—No. 2½ Can PEACH HALVES 33c</p> <p>Niblets MEXI-CORN 2 cans 33c</p> <p>Duncan's—1 Lb. Bag ADMIRATION COFFEE . . . 89c</p> <p>Nabisco Sugared—1 Lb. Bag DONUT COOKIES 45c</p> <p>46 Oz. Can—Libby's TOMATO JUICE 29c</p> <p>Libby's—Asparagus Style GREEN BEANS can 35c</p>	<p>★ GROCERIES ★</p> <p>Armour's Star — 12 Oz. Can CORNER BEEF can 49c</p> <p>Armour's Star — 12 Oz. Can TRETT can 39c</p> <p>Armour's STAR VIENNA SAUSAGE . . 3 cans 49c</p> <p>3 Pound Can CRISCO 89c</p> <p>Nelda Brand—303 Cans TOMATOES 2 cans 25c</p> <p>Van Camp's—No. 2 Cans PORK & BEANS 2 cans 35c</p> <p>Delsey—In Package of Four BATH ROOM TISSUE . . pkg. 49c</p>
<p>★ FROZEN FOODS ★</p> <p>— PICTSWEET —</p> <p>LEMONADE, LIMEADE 6 oz. cans</p> <p>ORANGE JUICE 2 cans 35c</p> <p>SLICED PEACHES Pkg.</p> <p>SLICED STRAWBERRIES . . 28c</p>	<p>★ MARKET ★</p> <p>Decker's—Tall Korn SLICED BACON lb. 43c</p> <p>Armour's Star WIENERS lb. 49c</p> <p>LOIN STEAK lb. 69c</p> <p>T-BONE STEAK lb. 69c</p> <p>PORTER HOUSE STEAK . lb. 43c</p> <p>Square Cut SHOULDER ROAST . . . lb. 39c</p> <p>Armour's Star FRYERS lb. 45c</p>

CHARLIE'S

FOOD MARKET

NORTH GATE — WE DELIVER — COLLEGE STATION

SPECIALS FOR THUR. AFTERNOON, FRI. & SAT.—JUNE 14 - 15 - 16

Every Dad Likes To Relax In Sport Clothes From W.S.D.

A Happy Gift-Hunch For Father's Day, June 17th

Give Dad's casual wardrobe a welcome lift with one or more pairs of these handsome slacks to mix or match with his favorite sport or leisure jackets.

● Jackets

● Slacks

● Sport Shirts

W. S. D.