

A&M To Play TCU Tonight

Barring unexpected rain at Travis Park in Bryan tonight, A&M will take on TCU in an important Southwest Conference clash. Game time is 8.

Another clash with the Froggies

Car-Wash Planned To Earn Expenses

A group of nine Explorer Scouts, with their eyes on a canoeing trip to Canada this summer, plan to wash cars each Saturday morning until the school term ends.

The trip is planned for the last two weeks of July, with the cost figured at about \$75 per boy. The scouts must make at least a half of the expense money.

Cost of the carwash, which will begin at 8:30, will be \$1 per car. To make appointment for a wash, the number to call is VI 6-7243. Boys doing the work are George Spurger, Morris Stone, David McGuire, Stanley Caywood, Jerry McCannon, Matt Gaddis, John Wayne Todd, Jud Rodgers and George Somerville.

is scheduled for tomorrow afternoon at 2 on Kyle Field.

Taking the mound tonight, if the game is played, will be righthander Dick Munday, junior from Bryan. Munday won his last start, against the Corpus Christi Clippers last Friday night, pitching a neat six-hitter.

Joe Boring, Aggie captain and shortstop, will lead the way in hitting with a lustrous .382 average. Other sluggers for A&M are the outfield trio, John Stockton, Phil Newport and Behn Hubbard.

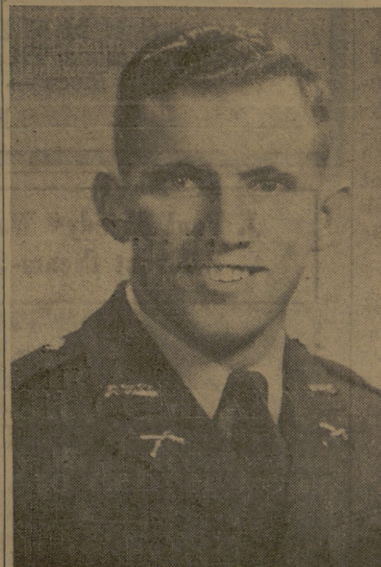
Tickets to tonight's game are 75 cents for general admission and 50 cents for high school students. Box seats at \$1.50 will be good for tonight's game plus the April 13 and 14 games with Baylor and the May 4 game with Rice. Faculty season book covers and student athletic activity cards also will be honored at the four night Aggie games in

Bob Pettit, high scorer for the 1955-56 National Basketball Assn. campaign, also led the league in most rebounds with 1164, breaking the record of 1098 made two seasons previous by Harry Gallatin of the New York Knickerbockers.

Travis Park this season.

Scheduled pitcher for the Aggies tomorrow afternoon is ace lefthander Toby Newton, who sports a 1-0 victory over the SMU Mustangs. Newton was knocked out of the box last week against Corpus Christi.

A&M's conference record is 1-0, leaving them atop the heap; the season record is 6-3.



Dwayne S. Bailey

D. S. Bailey Re-Elected BSU President

Dwayne S. (Dub) Bailey, junior business major from Port Arthur, has been elected president of the Baptist Student Union for the second successive year. Not since 1948 has a student been elected by the Baptist students to serve two successive terms in this place of leadership for the BSU Executive Council which coordinates the activities for the entire Baptist Student Union.

Other officers elected are Morris Johnston and Ronald Easley, enlistment vice presidents; Jim Brady, social vice-president; Gene Buie, devotional vice-president; Tommy R. Harris, secretary; L. E. Sheppard, program director; Jim Manley, promotional director; Skipper Connor, missions director and Frank Barnett, editor of The Link, a monthly publication distributed to all Baptists.

Bailey will spearhead this organization charged with directing the religious activities for 1,750 Baptist students this semester. He is also the vice-president of the Arts & Sciences Council, secretary of the Accounting Society, and a member of the A&M Wrestling Club. He is also much in demand as a songleader for revival meetings and as director of fellowships for youth groups. This week he is leading the music at a revival meeting each night at the First Baptist Church in Somerville.

Installation of the officers will be held in one of the local Baptist churches later this semester.

Top Agricultural Officials To Visit Here April 10-13

Top agricultural officials from 13 southern states and Puerto Rico will take a look at agriculture and plan for its future when directors of agricultural extension services and experiment stations meet here April 10-13.

The group will hear such outstanding agricultural leaders as Assistant Secretary of Agriculture E. L. Peterson of Washington, D. C., said Dr. R. D. Lewis, director of the Texas Agricultural experiment station and chairman of the research group. The theme of the meeting will be "Realizing on the Investments in Research and Extension".

Chairman of the extension directors will be Clay Lyle, director of Mississippi State College agricultural extension service.

In addition to business sessions the group will visit A&M agricultural facilities and be guests of the Brenham Chamber of Com-

merce at a barbecue supper at Independence, April 12. After a visit to Prairie View A&M April 13 enroute to Houston the group will be guests of the Houston Farm and Ranch Club for a water tour of Houston's shipping, oil and chemical industries, and a visit to and supper at the San Jacinto Battleground which will end the conference.

Film Society

Memorial Student Center Film Society will show the movie "Hondo," starring John Wayne, tonight at 7:30 in the MSC Ballroom. Admission is by season ticket or is 25 cents for non-season ticket holders.

U - PAK - M
REMEMBER . . . for Eats
Nick-Nacks, Cold Beverages
OPEN 7 A.M. to 11 P.M.
3890 So. College Gus Ellis, '57

TRIANGLE BANQUET ROOM

Open for all:
BANQUETS — DINNERS — LUNCHEONS
RECEPTIONS and WEDDINGS
(By Reservation Only)
For Information Call: Mr. J. A. Ferreri — TA 2-8508
(Between 9 a.m. & 5 p.m.)



Check with us for better car care

- Expert Service
- Washing
- Greasing

AGGIES! Make Hall's your Humble Headquarters.

HALL'S Humble Service
Across from USDA Bldg.—North Gate

McCALL'S Humble Service Station

"Where Service Is First"

East Gate VI 6-4922
Hy 6

SUMMER VACATION . . . ?

Learn to speak SPANISH, fulfill language requirement, increase your EARNING power, in AIR-CONDITIONED comfort. 11 weeks course \$435.00. Folder free: Latin-American Institute Station A, Hattiesburg, Miss.

COTTON SHIRTS
Short Sleeves and Western
\$2.25 to \$3.95

Trade With LOU — He's Right With You!

NEVER BEFORE SUCH VALUE!

1/2 CARAT TOTAL WEIGHT DIAMOND SET

ONLY \$210.00
\$3.00 per wk. on easy credit

"Star of Africa" INTERLOCKING DIAMOND RINGS

Our greatest diamond value in interlocking rings. More brilliance . . . more beauty . . . more diamond fire.

McCarty Jewelers
North Gate

The Church . . . For a Fuller Life . . . For You . . .

CALENDAR OF CHURCH SERVICES

A&M CHURCH OF CHRIST 9:45 A.M.—Bible Classes 10:45 A.M.—Morning Worship 7:15 P.M.—Evening Service	FIRST BAPTIST CHURCH 9:40 a.m.—Church School 11:00 a.m.—Worship 8:30 p.m.—Training Union 7:30 p.m.—Worship	FAITH EVANGELICAL AND REFORMED CHURCH 9:15 A.M.—Sunday School 10:30 A.M.—Morning Worship 7:30 P.M.—Evening Service
OUR SAVIOUR'S LUTHERAN CHURCH 9:30 A.M.—Church School 10:45 A.M.—Morning Worship	A&M CHRISTIAN CHURCH 9:30 a.m.—Coffee Time 9:45 a.m.—Sunday School 11:00 a.m.—Morning Service 3:30 p.m.—Children's Fellowship 5:00 p.m.—Christian Youth Fellowship and Disciples Student Fellowship	CHURCH OF THE NAZARENE 10:00 A.M.—Sunday School 11:00 A.M.—Morning Worship 7:00 P.M.—Young People's Service 7:45 P.M.—Preaching Service
A&M METHODIST CHURCH 9:45 A.M.—Sunday School 10:55 A.M.—Morning Worship 6:00 & 6:45 P.M.—MYF Meeting	CHURCH OF JESUS CHRIST OF LATTER DAY SAINTS 10:00 A.M.—Morning Worship	COLLEGE HEIGHTS ASSEMBLY OF GOD 9:45 A.M.—Sunday School 11:00 A.M.—Morning Worship 6:30 P.M.—Young People's Service 7:30 P.M.—Evening Worship
CHRISTIAN SCIENCE SOCIETY 9:30 A.M.—Sunday School 11:00 A.M.—Morning Worship	A&M PRESBYTERIAN CHURCH 8:45 a.m.—Worship 9:45 a.m.—Church School 11:00 a.m.—Worship	BETHEL LUTHERAN CHURCH (Missouri Synod) 800 S. College Ave. Bryan, Texas 9:30 A.M.—Church School 9:45 A.M.—Morning Worship
ST. MARY'S CATHOLIC CHAPEL 7:00 a.m.—Mass 8:30 a.m.—Mass 10:00 a.m.—Mass	ST. THOMAS EPISCOPAL CHAPEL 8:00 a.m.—Holy Communion 9:30 a.m.—Sunday School 9:30 a.m.—Morning prayer and sermon 11:00 a.m.—Morning prayer and sermon	

Hillier Funeral Home

BRYAN, TEXAS
502 West 26th St.
PHONE TA 2-1572

Extra Good Dairy Products
Milk—Ice Cream
TA 2-3763

Sanitary FARM DAIRIES

GOING HOME

You've heard of heredity and environment. You know that the latter usually exercises the stronger influence upon the development of a child.

Then you are face to face with the dilemma of the Church.

The Church can give to every child who comes within its influence the heritage of the Christian faith. It can teach him the truth about God; it can show him the Christian way of life.

But what happens when a child goes home? Will the lesson "stay learned?" Or will it be destroyed by language, attitude and example contrary to all the Church has taught?

It isn't enough to send your child to church school. Become a church-going family! Let Christian truth mold the life of your home and it will mold the life of your child.

THE CHURCH FOR ALL . . . ALL FOR THE CHURCH

The Church is the greatest factor on earth for the building of character and good citizenship. It is a storehouse of spiritual values. Without a strong Church, neither democracy nor civilization can survive. There are four sound reasons why every person should attend services regularly and support the Church. They are: (1) For his own sake. (2) For his children's sake. (3) For the sake of his community and nation. (4) For the sake of the Church itself, which needs his moral and material support. Plan to go to church regularly and read your Bible daily.

Day	Book	Chapter	Verses
Sunday	Leviticus	19	11-18
Monday	Numbers	6	22-27
Tuesday	Deuteronomy	6	3-9
Wednesday	Joshua	1	5-9
Thursday	Ruth	1	11-18
Friday	Ecclesiastes	12	1-14
Saturday	Luke	15	11-32

Copyright 1956, Keister Adv. Service, Strasburg, Va.

Student Publications

★

College Station's Own Banking Service

College Station State Bank

NORTH GATE

Central Texas Hardware Co.

BRYAN

- HARDWARE
- CHINAWARE
- CRYSTAL
- GIFTS

Bryan Communities Since 1909

First State Bank & Trust Co.

Member Federal Deposit Insurance Corporation

BRYAN

Graduating Seniors . . .

CADE MOTOR COMPANY is now ready to deliver your **NEW 1956 FORD** at your special prices!

SMALL DOWN PAYMENTS

Cash or Trade-In with finance terms tailored to fit your Budget

CADE MOTOR COMPANY

— SEE US TODAY —

415 N. Main St. Your Friendly Ford Dealer TA 2-1333

Corner of Texas Ave. Burnett St. TA 2-5229

The Exchange Store

"Serving Texas Aggies"

Bryan Building & Loan Association

BRYAN

City National Bank

Member FEDERAL DEPOSIT INSURANCE CORPORATION

Bryan

Lilly

Lilly Ice Cream Co. Bryan

MELLO CREAM

"A Nutritious Food"