

Girl Scouts Will Hostess U.N. Club Meeting Friday

The United Nations Club will meet at 7:30 p.m. Friday in the YMCA with Girl Scout Troop 36 of Consolidated School serving as hostesses.

The U.N. club will present a panel discussion led by Dr. C. C. Doak on "America's Own Revolution" as the first part of the program. A film will also be shown to highlight the subject.

The Girl Scouts will present folk dances from three different countries. Dancing will be directed by

Mrs. Henry Thigpen and music provided by Mrs. Phillip Goode.

Members of Troop 36 are Kay Andrews, Nancy Beamer, Susan Briles, Carla Denison, Janet Durst, Eileen Floeck, Marcy Goode, Robin James.

Barbara Kackley, Virginia McAfee, Mary McNeely, Judy Mills, Susan Minor, Allyn Roth, Jeanette Sperry, Joy Thigpen, and Kathy Walker.

Troop leaders, Mrs. J. G. McNeely and Mrs. W. E. Briles, would like to invite anyone interested to attend the program.

Family Favorites

By Mrs. J. Gordon Gay

Emma R. Gay, reared in Bay Springs, Miss., received her B.A. degree from Mississippi Womens College. The wife of J. Gordon Gay, secretary of the YMCA, the couple have been with the College since 1928. Mrs. Gay's hobbies include metal work, rug making and working with house plants. The Gay's, who are Methodist, have four sons.

ICE BOX ROLLS

2 cups milk
1/2 cup sugar
1/2 cup shortening
1 yeast cake
1/2 t. soda
1/2 t. baking powder
1 t. salt
5 1/2 cups flour

Boil together, milk, sugar and shortening, then cool to luke warm. Crumble yeast cake in warm water to cover and let set while milk mixture cools. Then add to mixture and stir. Add soda, baking powder, salt and about 3 1/2 cups of the flour for soft batter.

Let rise until double in bulk. Add remaining flour and let rise again until double in bulk. You may use a little more or less flour but use as little as possible. Grease hands and make out rolls by pinching off small portions, shaping into parkerhouse or clover leaf rolls. Grease thoroughly with melted butter. Let rise until very light and bake at 350 degrees about 15 min. (do not pre-heat oven). Grease left over dough and cover tightly in refrigerator. They are really better the second day.

ONIONS AND LIVER CASSEROLE

This is a favorite with my family since it does away with the strong liver taste that most liver recipes have.

2 cups sliced onions
1 lb. calf liver
Salt, pepper
Bacon grease

Cook sliced onions slowly in bacon grease until soft (not brown) and place in casserole. Remove skin from liver and cut into 1 1/2 or 2 inch cubes. Dredge in flour and brown in bacon grease in which onions were cooked. . . . sprinkle with salt and pepper. Place lightly browned liver over onions in casserole, cover tightly and bake at 300 degrees about one hour.

BANANA NUT BREAD

1/2 cup butter
2 cups flour
1 cup sugar
1 t. soda
2 eggs
1/4 cup nuts
3 bananas

First crush bananas and whip until light. Cream butter and sugar, add eggs, flour, soda and nuts. Add bananas—turn into bread pan lined with wax paper. Bake at 350 degrees for 1 hour. This makes one loaf.

CABBAGE AND PINEAPPLE SALAD

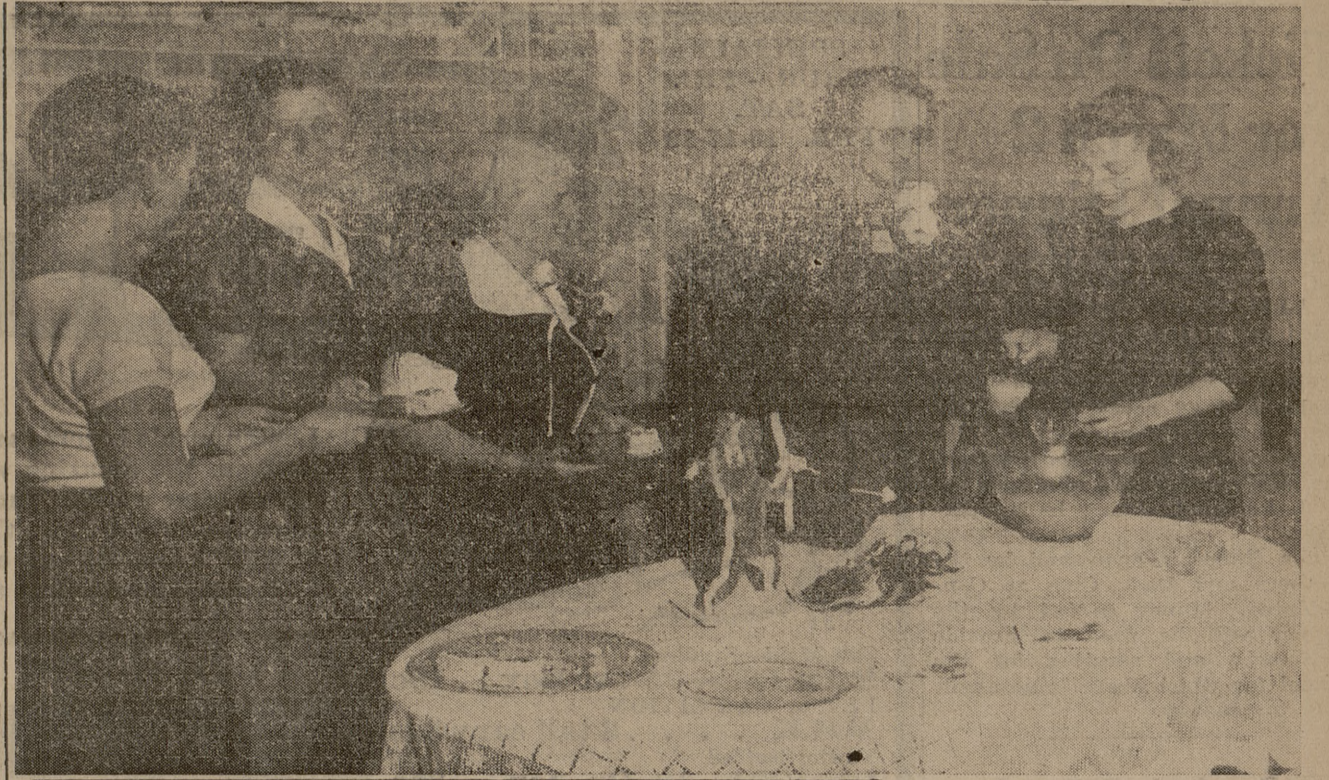
2 cups finely shredded raw cabbage
1/2 No. 2 can crushed pineapple, well drained
1/3 cup chopped marshmallows
Juice of 1 lemon
Dash of salt
1/4 cup mayonnaise
2 T. sugar

Toss lightly together. This is very popular with men and boys. I serve it often to students.

COCOANUT CRUNCH PIE

Combine:
3 egg yolks, well beaten
1 1/4 cups sugar
1 t. salt—mix well
Add:
1/2 cup milk
2 T. soft oleo
1/2 t. Almond extract
1/4 t. lemon extract

After the two above lists of ingredients have been combined, beat then fold in 1 cup chopped cocoonut; beat 3 egg whites until stiff (not dry), fold into egg yolk mixture. Pour into unbaked pastry shell. Bake at 350 degrees about 40 minutes or until inserted knife comes out clear.



Council of Church Women Plans Services Friday

The Council of Church Women of College Station will hold services at 10 a.m. Friday at A&M Presbyterian Church in unison with the World Day of Prayer. All denominations are invited to this program.

Music will be provided by Harmony Choral Club under the direction of Mrs. Grace Krug. Mrs. C. W. Simmons will accompany the choral group while Mrs. Charles Moore, church organist will also play.

Nelson To Talk

Dr. Ellis Nelson, Professor of Christian Education at Austin Presbyterian Seminary, will be the third preacher at the First Methodist Church in Bryan for their series entitled "The Great Preachers of Texas."

Dr. Nelson is one of the leading preachers and teachers of the Presbyterian church and will also lead the Faculty Forums at A&M College during Religious Emphasis week which begins Sunday.

The program has been planned by Mrs. C. J. Keese with assistance from Mesdames J. B. Baty, Harvey Oakes, Harlin Smith, Clarence Ketch and M. L. Tashion. "All persons—particularly the women of the area—are invited to attend the program," stated Mrs. Smith.

VALENTINE TEA—Chemical Engineering Wives club recently honored the faculty wives of that department with a social in the YMCA, with approximately 33 persons present. Chatting around the punchbowl are, left, Barbara Mullins, Mrs. W. D. Harris, Mrs. J. D. Lidsay, Mrs. T. W. Bishop and Shirley Arnette. Mesdames Mullins and Arnette are club members.



Well, Mr. Smarty, who knows a good way to clean clothes with gasoline. . . . Maybe next time you'll send them to —

CAMPUS CLEANERS

Jobs

(Continued from Page 4)

ture.

BUREAU OF AERONAUTICS—DEPARTMENT OF THE NAVY, Washington, D.C. Opportunities in research, design and development are open for majors in mechanical, civil and aeronautical engineering.

TEXAS EASTMAN COMPANY will interview for openings with Tennessee Eastman and Eastman Kodak Company in New York. Majors in the following fields are invited to attend: chemistry, physics, mechanical, chemical, electrical and industrial engineers.

TEXAS GAS CORPORATION will interview mechanical and chemical engineers for various opportunities with the main field of operation in the Beaumont area.

"Roy Henry's clearing his used car lot all the way from the latest to the oldest models. Here's a chance for you to pick up a good clean used car, with plenty of miles left in it at a very low cost. Look at this:

- 1949 FORD TUDOR—excellent condition, paint in perfect condition **\$425**
- 1951 PONTIAC CATALINA—beautiful interior, fully equipped, just like a new one **\$795**
- 1953 PONTIAC 4 DOOR SEDAN—unbelievably clean, one car owner, extra low mileage **\$1250**
- 1950 CHEVROLET 4 DOOR SEDAN—many good miles left in it **\$295**

Roy Henry Pontiac Co.

Hearne, Texas

All the pleasure comes thru...
THE TASTE IS GREAT!



THE ACTIVATED
CHARCOAL FILTER



Here you have the best in filtered smoking—Filter Tip Tareyton, the filter cigarette that smokes milder, smokes smoother, draws easier . . . the only one that gives you Activated Charcoal filtration. All the pleasure comes thru...the taste is great!

THE BEST IN
FILTERED SMOKING

FILTER TIP TAREYTON

PRODUCT OF The American Tobacco Company AMERICA'S LEADING MANUFACTURER OF CIGARETTES

top food
VALUES
for early-in-the-week shoppers

- ★ **GROCERIES** ★
- Duncan's Admiration—1 Pound Bag **COFFEE 87c**
- Nabisco Ritz—8 Oz. Pkg. **CRACKERS 20c**
- Tea Garden Seedless—20 Oz. Jar **BLACKBERRY PRESERVES, 39c**
- Armour's Star—16 Oz. Can **CHILI WITH BEANS 25c**
- Armour's Star—16 Oz. Can **TAMALES 18c**
- Libby's—46 Oz. Can **TOMATO JUICE can 29c**
- Stockton—12 Oz. Bottles—Tomato **CATSUP 2 bottles 31c**
- ★ **FROZEN FOODS** ★
- PICTSWEET —
- 6 Oz. Cans **ORANGE JUICE 2 cans 33c**
- PEAS Pkg. 20c**
- PEAS & CARROTS Pkg. 20c**
- MIXED VEGETABLES 18c**
- CUT CORN Pkg. 18c**
- CHOPPED SPINACH**
- TURNIP GREENS 18c**
- ★ **PRODUCE** ★
- 146 Size Florida **ORANGES doz. 35c**
- Size 4 **LETTUCE 2 heads 19c**
- Green **CABBAGE 3 lbs. 10c**
- BANANAS 2 lbs. 25c**

- ★ **GROCERIES** ★
- Kimbell's Pitted—303 Cans **PIE CHERRIES 2 cans 49c**
- Kimbell's Whole—303 Cans **GREEN BEANS 2 cans 41c**
- 3 Pound Can **CRISCO 87c**
- Libby's Sliced—No. 2 Can **PINEAPPLE 29c**
- Nelda Brand—303 Cans **TOMATOES 2 cans 25c**
- Niblets Whole Kernel **GOLDEN CORN 2 cans 33c**
- Woodbury's Bath Size **TOILET SOAP 4 cakes 39c**
- ★ **MARKET** ★
- PEN FED BABY BEEF CUTS —
- LOIN STEAK lb. 69c**
- T-BONE STEAK lb. 69c**
- PORTER HOUSE STEAK . lb. 49c**
- 7-BONE STEAK lb. 59c**
- SHORT RIBS lb. 33c**
- Square Cut **SHOULDER ROAST lb. 39c**
- Decker's Tall Korn **SLICED BACON lb. 37c**
- Armour's Star **WIENERS lb. 45c**
- Armour's **LARGE BOLOGNA lb. 39c**

CHARLIE'S FOOD MARKET

NORTH GATE — WE DELIVER — COLLEGE STATION
SPECIALS FOR THUR. AFTERNOON, FRI. & SAT. — FEB. 16 - 17 - 18