

We Highly Recommend To You
SPRED SATIN—100% Latex Paint



SPRED SATIN is the most beautiful, most washable, easiest-to-use paint we've ever seen. Do it Yourself and get beautiful results on walls and woodwork.

5.69 gal.
 1.79 qt.

CHAPMAN'S PAINT & WALLPAPER CO.
 Next to Post Office

BASEBALL EQUIPMENT
 Now In Stock!

Gloves Bats Masks
Shoes Balls Mitts

STUDENT CO-OP

BATTALION CLASSIFIED

For Sale
 Bicycle—top condition; greens and OD's (31 by 31); green over-seas cap, 71/8. Call VI 6-4206 after 5 p.m. 85t4
 1950 Buick Special with heater. Priced low for quick sale. VI 6-6658. 79t4
 1954 For Custom fordor sedan, low mileage. Will take trade-in. John Shanks, Hart C-7. 68t4

Lost
 Ladie's gold LeCoultre wrist watch at Rollie Coliseum February 7. Finder please call Mrs. McCulough at TA 2-1470. \$10.00 Reward. 83t3

Wanted to Rent
 Please call if you will vacate unfurnished house by June 15, rent up to \$50.00 month plus utilities. Mrs. Warren Tombe, Day VI 6-4221, night, VI 6-4367. 83t8

For Rent
 Upstairs apartment, North Gate. Unfurnished or with stove and refrigerator. 400 Boyett Street. VI 6-5444. 85t88
 Trailer space, 307 Glade Street, College Station. Within walking distance campus. VI 6-7076. 84t4
 Three room furnished apartment, large screen porch and garage. Near Southside Shopping Center. VI 6-4452 after 5. 84t4
 Large bedroom with walk-in closet or will share home with working couple. VI 6-5953. 81t4

Room For Rent
 Southeast upstairs bedroom, private bath. Meals. Mrs. Maggie Parker. 75t4

Work Wanted
 Will care for children. Weekly \$7.50. Call VI 6-7175. 85t4
 Typing work wanted. Call Ruth Wiggins, VI 6-7139. 84t8
 Will care for working mother's children and will baby sit any night. Call TA 2-4036. 83t2
 Neat, accurate typist would like to type for you in my home near campus. VI 6-4644. 83t7
 Guaranteed radio and appliance repair. C-13-D College View. 81t4
 Typing wanted to do in my home. Mrs. C. E. Carlson, Jr. Phone TA 2-3532 after 5 p.m. 100t4

PROMPT RADIO SERVICE
 Call
SOSOLIK'S RADIO AND TV SERVICE
 713 S. Main St.
 (Across from Railroad Tower)
 PHONE TA 2-1941 BRYAN

Dr. Carlton R. Lee
 OPTOMETRIST
 803A East 26th
 Call TA 2-1662 for Appointment
 (Across from Court House)

WELCOME AGGIES
The Finest In Italian Foods

SPAGHETTI & MEAT BALLS OR SAUSAGE
 PIZZA PIES (all kinds) — POOR BOY SANDWICHES
 SIRLOIN STEAKS, A LA ITALIANA
 COMPLETE ITALIAN MENU
 SAUSAGE PLATES MEAT BALL DINNERS
 — Luncheon Daily — — Open 8 A.M. to 1 A.M. —

we specialize in orders to go
VIC'S SPAGHETTI HOUSE
 1501 W. 25th Bryan

Hogs Slip Past Aggies, Football Drills Set Grab Second In SWC

A&M basked in the light of victory for 10 minutes of the second half here last night, but determined Arkansas came from behind to record a 61-52 win and grab undisputed possession of second place in the Southwest Conference basketball race.

Ken Hutto, leading point maker for the Aggies, brought 3,000 White Coliseum fans to their feet by calmly dropping in two free throws to give A&M a 29-27 lead. Hutto's charity shots came only two minutes deep in the second period and were followed one minute later by Bill Brophy's two free throws that gave the Aggies a four point lead.

The loss was A&M's first at home in SWC play, and enabled Arkansas to jump a half game in front of the Rice Owls, now in third place. The Cadets, despite the loss, maintained their hold on fourth place in SWC standings, and now have a 3-5 loop mark.

Hutto, who had a perfect night at the free throw line sinking eight out of eight, dropped in two free tosses with 13:01 remaining to give A&M a seven point lead, their biggest of the evening. His 12 points paced Aggie scorers.

Manuel Whitley, Arkansas' leading candidate for all-SWC honors, swished a 25-foot set shot at 8:19 to give the Razorbacks a lead they held for the remainder of the game. Whitley was the game's high point man with 25.

The Cadets fought the Hogs on even terms throughout the first half. Arkansas' biggest lead in the opening period was seven points, and they held that only

A&M Baseballers

A&M's defending Southwest Conference baseball champs open practice for the 1956 season tomorrow with 11 lettermen among the diamond candidates.

Back for another crack at the title are pitchers Dick Munday and Wendell Baker, first-baseman John Hoyle, second-baseman Charlie Puls, third-baseman Joe Boring, shortstop Dick Bleckner, centerfielder John Stockton and rightfielder Behn Hubbard, a 1954 letterman who didn't play last season.

Also returning are reserve lettermen Louis Nelson, catcher, and pitchers Doug Mullins and Lynn Monical, with squadman Clyde Stinson, outfielder, Elo Zatopek, pitcher and Billy Frank Ross, outfielder.

OPEN FOR ALL BANQUETS, DINNERS
 RECEPTIONS, WEDDINGS AND LUNCHEONS

MAGGIE PARKER DINING HALL
 TA 2-5089
 "The Oaks" — TA 3-4375
 BRYAN

HELP LOU HELP YOU

Students are still needing these books and our stock is low

History 106 M.E. 212, 213, 338
B.A. 305 C.E. 202
Geology 305 Feeds and Feeding

We will pay premium prices for these titles until our customers are supplied

Hurry over while "the trading's hot".

LOUPOT'S TRADING POST
 North Gate

YOU ARE SURE
 When You Choose

Keepsake
 DIAMOND RINGS



CINDERELLA \$150.00
 Wedding Ring 75.00

A GUARANTEED PERFECT diamond is yours in every Keepsake engagement ring . . . The most wanted gift of all.

Sankey Park
 JEWELER
 101 N. Main Bryan

"MURALS"

B-Armor and C-Infantry won their way into freshman tennis finals with 2-1 victories. B-Armor had little trouble with powerful Sqd. 10, but a stubborn Sqd. 12 made it considerably tougher for C-Infantry.

Buddy Emery and Jack Smith quickly disposed of Sqd. 10's Karl Sinclair and Myles Jones, 6-1. George Fleck and Charles Schuring dealt another lethal blow to the airmen's Truman Hearne and David Krause, 6-2. Al Smith and Harold Oxspring took the only B-Armor loss from Jim Clary and Gene Birdwell in a 7-5 decision.

Loyd Neal and Johnny Dennis of C-Infantry defeated Sqd. 12's Norman Smith and Keith Cecil, 6-3. Bill Martin and Don Stringer handed a similar defeat to Donald Hawley and Johnny Euler. Sqd. 12's Carlos Salinas and Johnny Serur rebounded with a sound 6-1 thumping of Jim Vrba and David Aldridge.

Legal Notice

ORDINANCE NO. 218
 AN ORDINANCE REZONING CERTAIN AREAS WITHIN THE CITY LIMITS, FIXING TIME OF PUBLICATION AND PUBLIC HEARING.

BE IT ORDAINED by the City Council of College Station, Texas:

Section 1. Upon recommendation of the City Zoning Commission, the following described area is hereby changed from District 3 (Apartment House District) to District 4 (Business District) as defined in Ordinance No. 35:

Beginning at a stake in the south corner of P. L. Gettys Estate property, this being in the northeast line of Highway No. 6 a distance of 371.3 feet to a corner stake; said corner stake being the common property line between Nat. C. Worman and L. W. Brittain; thence in a northeasterly direction along the common property line between Nat. C. Worman and L. W. Brittain for a distance of 125 feet; thence in a southeasterly direction and parallel to State Highway No. 6 a distance of 371.3 feet to a corner stake; thence in a southwesterly direction and parallel to the common property line between Nat. C. Worman and L. W. Brittain a distance of 125 feet to the point of beginning; be rezoned to District 4. First Business District.

Section 2. That a public hearing shall be held in the City Hall at 7:00 p.m. February 27, 1955.

Section 3. That a notice of said hearing shall be published in the official city newspaper at least fifteen (15) days prior to said date of said public hearing.

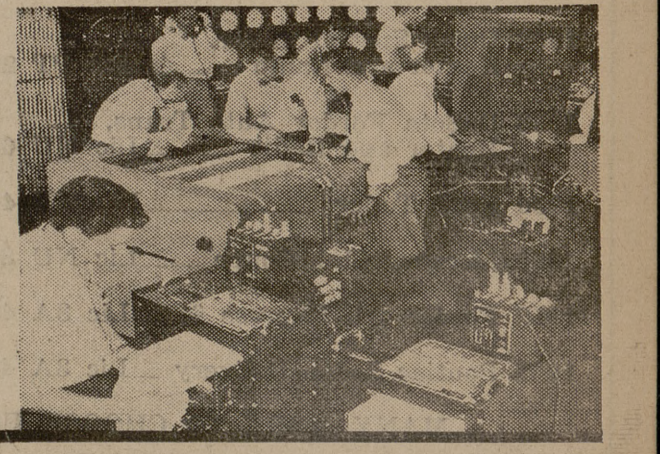
Passed and approved this 16th day of January, 1955 A. D.

APPROVED:
 S/J. A. Orr
 Mayor Pro-Tem

ATTEST:
 S/N. M. McGinnis
 City Secretary 85t2

What's doing at Pratt & Whitney Aircraft

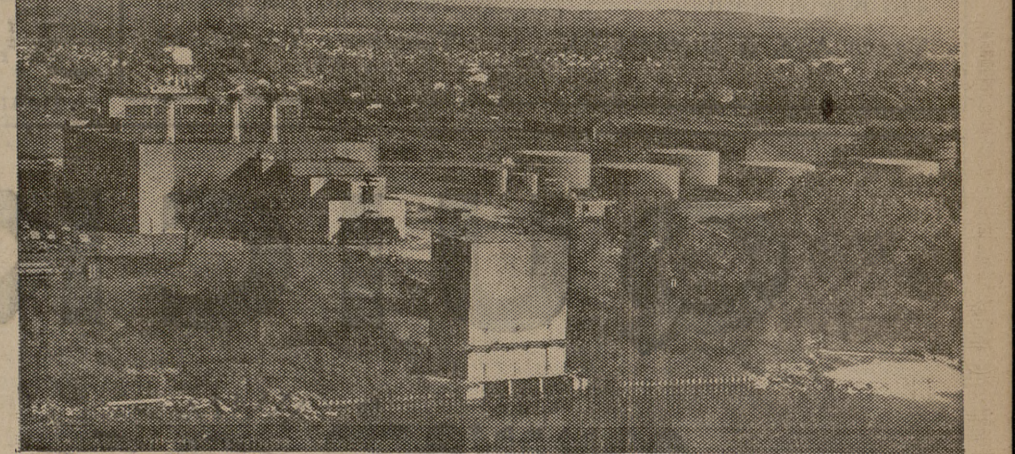
Jet Engines Tested in World's Most Complete Privately Owned Turbine Laboratory



Engineers in control room of one of eleven test cells at Willgoos Laboratory record important characteristics of gas turbine engines in operation.

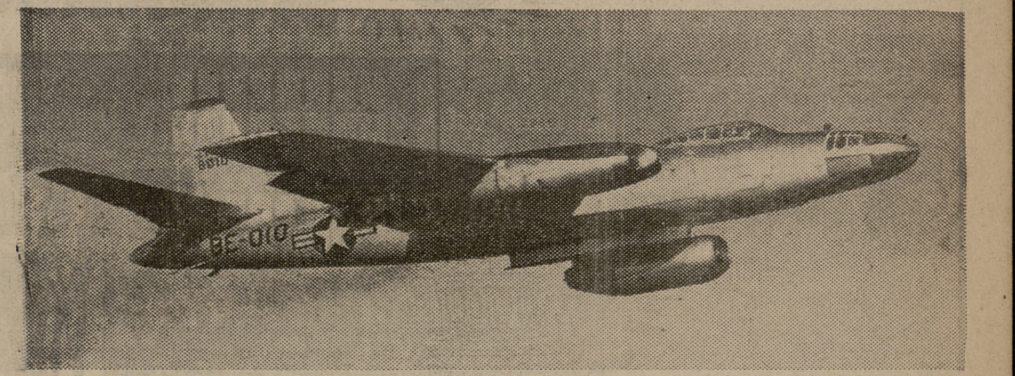
Located on the bank of the Connecticut River at East Hartford is a singular development facility—the Andrew Willgoos Turbine Laboratory. Here, behind windowless, thick concrete walls, many types of engines find a never-ending challenge in the development and testing of advanced aircraft engines.

Test methods used by Pratt & Whitney Aircraft in their unique laboratory are highly complex. Tests are conducted on full-scale experimental engines at simulated altitudes up to 76,000 feet. Extremely high speed airflow, with pressure and temperature accurately controlled, duplicates speeds as high as Mach 2.75. To reproduce such prodigious flight conditions, extraordinary equipment had to be devised. For example, a 21,500-hp driving dynamometer supplies the enormous power needed to test jet engine compressors over a range of speeds from 800 rpm to 16,000 rpm.

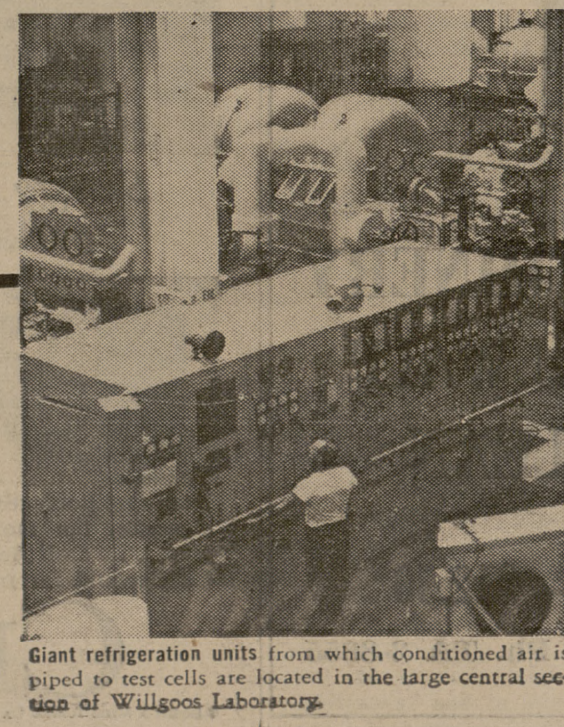


Andrew Willgoos Turbine Laboratory where jet engines and their components are explored. Cooling water from the Connecticut River can be pumped through a maze of conduits at the rate of 160,000 gallons per minute — 3 1/2 times the consumption of a city of half a million people.

The time lapse between development and production of new engines is reduced considerably by the advanced facilities of the Willgoos Laboratory. An outstanding example of results achieved through concentrated engineering effort and complete research support is the Pratt & Whitney Aircraft J-57 turbojet. Today the unchallenged leader in its field, the J-57 is merely the forerunner of greater aircraft engines that will power the preeminent military and commercial aircraft of the future.



B-45 flying test-bed is shown here with an experimental jet engine suspended directly beneath the bomb bay. Its regular engines are idled while in-flight performance of the turbojet is observed and recorded. The perfect complement to the complex ground-testing facilities of the Willgoos Laboratory, the flying test-bed is another vital factor in reducing engine development time.



Giant refrigeration units from which conditioned air is piped to test cells are located in the large central section of Willgoos Laboratory.

 World's foremost designer and builder of aircraft engines

PRATT & WHITNEY AIRCRAFT
 DIVISION OF UNITED AIRCRAFT CORPORATION
 EAST HARTFORD 8, CONNECTICUT