

Jones of AH Dept Kept Very Busy

J. H. Jones of the Animal Husbandry Department visited six cities during mid-January, attending meetings on rations for cattle.

The cities visited were Angleton, Conroe, Houston, Liberty, Beaumont and Lufkin. The meetings, sponsored by the Texas Agricultural Extension Service dealt with Stilbesterol and Aureomycin in cattle rations.

Jones also visited several sub-stations of the Texas Agricultural Experiment Station to confer with personnel there.

TEES Improves Sewage Process

Two-stage treatment of settled sewage by trickling filters without intermediate sedimentation has been found to be an effective process by sanitary engineering researchers at the Texas Engineering Experiment Station.

The finding was made by J. H. Sorrells and P. J. A. Zeller who

investigated the degree of purification accomplished by a trickling filter at excessive loadings without recirculation in comparison with that afforded by filters in series.

The research was conducted in the interest of aiding municipalities with their ever present problem of increasing facilities under difficult budget conditions.

Four experimental filters were dosed with settled sewage by means of orifices in a constant head tank. The effluent from each of these primary filters passed directly to a corresponding secondary filter without intermediate sedimentation. Each secondary filter was four feet square, three feet deep, and had a motor driven spinner to assure good distribution.

Within the loading range of 1000-4000 pounds of 5-day biochemical oxygen demand per acre-foot per day applied to primary filters several results were observed. The biochemical oxygen demand removal increased from 63.6 to 142.6 pounds per acre-foot per day at 3000 pounds loading, but dropped to 118.0 pounds at 4000 pounds loading.

The percentage removal decreased consistently from 63.6 to 28.7 resulting in a poorer quality effluent ranging from 59 to 116 parts per million biochemical oxygen demand.

Suspended solids removal increased from 532 to 1348 pounds per acre-foot per day at loadings ranging from 814 to 3207 pounds per acre-foot per day. It also was learned that roughing filters do not produce a satisfactory effluent for discharge.

Health Report

Diarrhea was the leading disease reported in the College Station area with 10 cases. Influenza was next with nine cases reported in College Station and 15 in Bryan. Seven cases of gonorrhea were reported in Bryan.

CS Churches Plan Services

Our Saviour's Lutheran Church
Church School will begin at 9:30 a.m. Sunday followed by worship services at 10:45. Holy Communion will be observed.

St. Thomas Episcopal Chapel
Holy Communion will begin at 8 a.m. Sunday. Morning prayer and sermon will start at 9:30 and Holy Communion and sermon will be observed at 11. Church School is held at 9:30. Coffee hour will be held in the parish hall between the two morning services from 10:30 to 11. "There's No Discouragement" is the sermon-topic.

The Thomas Bittle Chapter of the Women's Auxiliary will meet at 3 p.m. Monday in the Church School Building. Mrs. John A. Teamer will present the program. Monday at 8 p.m. the Erlene Helvey Chapter of the Auxiliary will meet in the Parish Hall.

Christian Science Society
Divine healing will be a topic dealt with at 11 a.m. services Sunday in the lesson-sermon entitled "Spirit". Sunday School starts at 9:30.

Church of Jesus Christ of Latter Day Saints
Services will be held at 10 a.m. Sunday in YMCA Chapel.

Wesley Foundation
College Class will begin at 9:45 a.m. Wesley Foundation Fellowship will start at 6:15 p.m.

St. Mary's Catholic Chapel
Mass is said at 7, 8:30 and 10 a.m. Sunday. Confessions are heard from 6:30 to 7:30 Saturday

Supper Planned At St. Mary's

An Italian spaghetti supper will be held Wednesday from 6 to 8 p.m. at St. Mary's Student Center.

The supper will be sponsored by the Newman Club, Altar Society, and the Knights of Columbus—all of College Station.

The price of the supper will be \$1 for adults and 50 cents for children and will include spaghetti and meatballs, a green salad, bread and butter, coffee and cake.

night and before Sunday mass. Coffee and donuts are served following 8:30 mass.

A&M Methodist Church
Church School will start at 9:45 a.m. Sunday. "Seeking the Lord" will be the Communion meditation topic for the 10:55 a.m. services with the observance of Holy Communion. Intermediate and Senior MYF will meet at 5:45 and 6:30 p.m. respectively.

The evening worship at 7:30 Sunday will be sponsored by the Youth of the church.

A&M Christian Church
Coffee Hour will be held at 9:30 a.m. Sunday School will follow at 9:45. Morning service will begin at 11. Children's Fellowship will start at 3:00 p.m. with both Christian Fellowship and Disciples Student Fellowship at 5 p.m.

Church of the Nazarene
Sunday School at 10 a.m. is followed by worship services at 11. Nazarene Young People's Society will start at 7 p.m. with evangelistic services at 7:45.

College Heights Assembly of God
The Rev. James Anderson will continue in revival services at the

church with sermons at the 11 a.m. worship service and 7:30 evening service. Sunday School starts at 9:45 a.m. and Christ Ambassadors begin at 6:30 p.m.

Church of Christ
Sunday School will start at 9:45 a.m. and worship services begin at 10:45. Young People's Class will begin at 6:15 p.m. and evening service will start at 7:15.

A&M Presbyterian Church
Morning Worship will be conducted at 8:45 and 11 Sunday with Church School starting at 9:45. Presbyterian Student League will meet at 6:30 p.m. "The Life That Now Is" is the sermon.

Faith Evangelical and Reformed Church
Sunday School will start at 9:15 a.m. with worship services at 10:40. Evening service will be conducted at 7:30.

First Baptist Church
Church School will start at 9:40 a.m. Sunday. Worship services will be conducted at 8:30 and 11 a.m. Worship services will be conducted at 8:30 and 11 a.m. Training Union will meet at 6:30 p.m. followed by worship services at 7:30.

McCALL'S Humble Service Station

"Where Service Is First"

East Gate VI 6-4922 Hy 6

"Roy Henry's clearing his used car lot all the way from the latest to the oldest models. Here's a chance for you to pick up a good clean used car, with plenty of miles left in it at a very low cost. Look at this:

- 1949 FORD TUDOR—excellent condition, paint in perfect condition \$425
- 1951 PONTIAC CATALINA—beautiful interior, fully equipped, just like a new one \$795
- 1953 PONTIAC 4 DOOR SEDAN—unbelievably clean, one car owner, extra low mileage \$1250
- 1950 CHEVROLET 4 DOOR SEDAN—many good miles left in it \$295

Roy Henry Pontiac Co.

Hearne, Texas

You Don't Need Cash At . . . LOU'S

Your \$6.00 2nd Term Book and 95c

Will Buy

ANY \$6.00 BOOK YOU NEED

INVESTIGATE!!

LOUPOT'S TRADING POST

North Gate

THE DOW CHEMICAL COMPANY

REPRESENTATIVES WILL INTERVIEW

SCIENCE MAJORS
ENGINEERS
TECHNICAL SALES
(2 YRS. SCIENCE OR ENGINEERING)

ON THIS CAMPUS
Feb. 22, 23
and 24

SEE YOUR PLACEMENT
OFFICE FOR AN
APPOINTMENT

STARTING LOCATIONS:
Midland, Michigan and
Freeport, Texas

DOW
THE DOW CHEMICAL COMPANY



GROCERIES

- Lucky Leaf—303 Cans
APPLE SAUCE . . . 2 cans 31c
- Lucky Leaf—No. 2 Cans
SLICED APPLES . . . 2 cans 45c
- Lucky Leaf—Quart Bottle
APPLE JUICE 25c
- CRISCO 3 lb. can 85c
- Kimbell's—300 Cans
PORK & BEANS . . . 3 cans 26c
- Nabisco—1 Lb. Pkg.
SALTINE CRACKERS . . . 25c
- Lipton's
TEA — 1 lb. pkg. \$1.19

FROZEN FOODS

- Pictsweet
BEEF, CHICKEN or TURKEY
POT PIES Each 27c
- CUTCORN, CHOPPED SPINACH
TURNIP GREENS . . pkg. 18c

PRODUCE

- Ruby Red
GRAPEFRUIT each 5c
- Red Tokay
GRAPES lb. 10c
- Size 4—California
LETTUCE head 9c
- Firm Green
CABBAGE 3 lb. 10c

GROCERIES

- Rotel—No. 1 Cans—(With Green Chilies)
TOMATOES 2 cans 25c
- Green Giant—Big Tender—303 Cans
SWEET PEAS 2 cans 43c
- Folger's
COFFEE 1 lb. can 87c
- Libby's Golden Cream Style—303 Cans
CORN 2 cans 31c
- Libby's Whole Spiced—No. 2 1/2 Can
PEACHES can 41c
- Nu-Zest Unsweetened—46 Oz. Can
FLORIDA ORANGE JUICE . . 32c
- Stockton—12 Oz. Bottles
TOMATO CATSUP . 2 bottles 31c

MARKET

- Armour's Star
ALL MEAT FRANKS . . lb. 45c
- Armour's Star
SLICED BACON lb. 45c
- Armour's Star
FRYERS lb. 45c
- Armour's
LUNCHEON MEAT . . . lb. 39c
- PEN FED BABY BEEF CUTS —
- Square Cut
SHOULDER ROAST . . lb. 39c
- RIB CHOPS lb. 59c
- PORTER HOUSE STEAK . lb. 49c
- ROUND STEAK lb. 69c
- MEATY SHORT RIBS . . lb. 31c

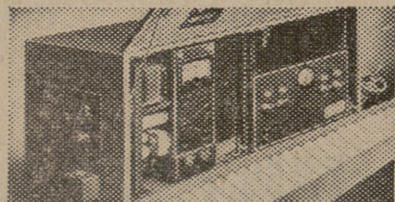
CHARLIE'S FOOD MARKET

NORTH GATE — WE DELIVER — COLLEGE STATION
SPECIALS FOR THUR. AFTERNOON, FRI. & SAT. — FEB. 2 - 3 - 4

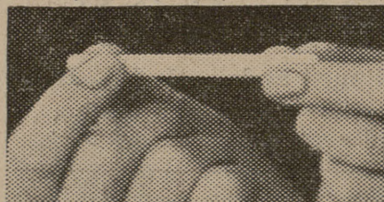
PACKS MORE PLEASURE because it's More Perfectly Packed!



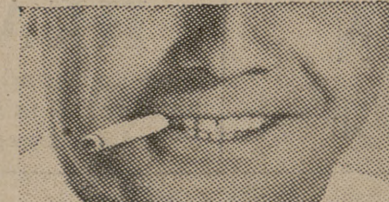
Satisfy Yourself with a Milder, Better-Tasting smoke—packed for more pleasure by exclusive Accu-Ray



The more perfectly packed your cigarette, the more pleasure it gives . . . and Accu-Ray packs Chesterfield far more perfectly.



To the touch . . . to the taste, an Accu-Ray Chesterfield satisfies the most . . . burns more evenly, smokes much smoother.



Firm and pleasing to the lips . . . mild yet deeply satisfying to the taste—Chesterfield alone is pleasure-packed by Accu-Ray.



CHESTERFIELD

MILD, YET THEY Satisfy!

© LIGGETT & MYERS TOBACCO CO.