

City Churches Plan Services

St. Joseph's Catholic Church
Mass will be said at 7, 8:30 and 10 a.m. Sunday. Confessions will be held Saturday evening.

A&M Christian Church
Coffee time will begin at 9:30 Sunday morning followed by Sunday School at 9:45. Morning services will be conducted by the Rev. Mr. Clarence Ketch, pastor.

Children's Fellowship will meet at 3:30 p.m. and the Christian Youth Fellowship will meet at 5 p.m. Sunday.

College Heights Assembly of God
Evening services were held last night at 7:30 at the church. Sunday School will begin at 9:45 a.m. followed by worship service at 11. Evening services will meet Sunday at 7:30.

Church of the Nazarene
Sunday School will meet at 10 a.m. and morning worship services will start at 11. Evangelistic services will be conducted Sunday night at 7:45.

First Baptist Church
Prayer meeting was held at 7:30 p.m. yesterday at the church. Church school will begin at 9:40 a.m. Sunday with worship services at 8:30 and 11 a.m. Evening worship services will be conducted at 7:30. Men's prayer service was held at 7 this morning.

A&M Methodist Church
Sunday School will meet at 9:45 a.m. with worship services following at 10:55.

Faith Evangelical and Reformed Church
Sunday School will start at 9:15 a.m. with morning worship beginning at 10:30. Evening services will be held at 7:30.

A&M Presbyterian Church
Church School will be held at 9:45 a.m. Sunday and morning worship will be conducted at 11.

St. Thomas Episcopal Chapel
Holy Communion will be observed at 8 a.m. Sunday and Sunday School will start at 9:30 a.m.

Church of Christ
Mid-week services were held last night at 7:15 in the church. Sunday School will begin at 9:45 a.m. and morning service will start at 10:45.

Evening services will be conducted at 7:15 Sunday.

Bethel Lutheran Church (Missouri Synod)
Worship services will be conducted at 10:45 following Sunday School at 9:30.

Christian Science Society
Evening services were held last night at 8 p.m. at the church, located at Patricia and Boyette St. Sunday School will begin at 9:30 a.m. followed by church services at 11.

Church of Jesus Christ of Latter Day Saints
Services will be held at 10 a.m. Sunday in the YMCA Chapel.

Our Saviour's Lutheran Church
Church School will start at 9:30 a.m. Sunday and morning worship will begin at 10:45. Holy Communion will be observed.

Going To Irving Fowler To Leave Church of Christ

James F. Fowler, pastor of the A&M Church of Christ, will leave College Station Jan. 1 to serve the Deleware and Irving Church of Christ in Irving. Fowler came to the A&M church in 1946, succeeding R. B. Sweet who had served as the church's pastor since its founding in 1935.

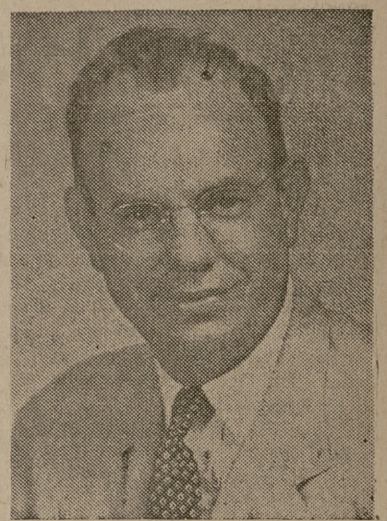
During his ministry here the church has made a steady growth in every department of its work. Among the physical improvements were two classroom buildings, air-conditioning, a nursery and a \$53,000 extension to the auditorium. Annual contributions have increased during the last decade from \$4,000 to more than \$19,000, and the 1956 budget exceeds \$21,000.

In addition to the regular preaching work Fowler taught Bible courses in the college's Religious Education curricula.

Robert E. Davidson, associate minister who works with the 340 Aggies who attend the church, will finish Fowler's teaching obligations as well as serving as interim minister until a successor for Fowler can be found.

"We find it very difficult to resign and leave the wonderful people at College Station," Fowler said. "However, we go to our new work with enthusiasm and with the faith that it is for the best. In addition to a very challenging work, the move will afford us special medical facilities in Dallas which are needed by one of our little girls."

Mr. and Mrs. Fowler have four children, three of who have been attending A&M Consolidated. He and his wife are graduates of Abilene Christian College. Fowler earned his Masters degree from Southern Methodist University while serving the Shamrock Shores Church in Dallas in 1946—just prior to his move to College Station.



James F. Fowler Leaving College Station

CHS Students Try For Award

Examinations were held at A & M Consolidated High School recently in connection with the 15th Annual Science Talent Search, according to J. J. Skrivanek Jr., principal, who administered the tests to three students.

Taking the science aptitude test were Dick McCannon, Dick Hickman and Michael McGuire.

Forty boys and girls who lead in the preliminary examinations will be given all-expense-paid trips to Washington to attend the Science Talent Institute for five days early next spring and take the final examinations for the scholarships. One contestant will receive a Westinghouse Grand Science Scholarship of \$2,800 (\$700 per year for four years).

One other contestant will receive a scholarship for \$2,000 and eight more will receive scholarships of \$400. \$3,000 additional in scholarships will be awarded.

As part of the preliminary examinations, each contestant must submit a report of about 1,000 words on the subject "My Scientific Project."

Miller Elected VP In Chicago Meeting

Dr. J. C. Miller, head of the Animal Husbandry Department, was elected vice-president of the American Society of Animal Producers during the annual meeting in Chicago, and will serve the society in this capacity for one year.

One thousand members, representing every state and two Canadian provinces, attended the program this year which consisted of 17 program sections. In these programs over 200 research papers were presented about breeding and genetics, nutrition, physiology, meats, teaching, extension, pastures and forages.

Twelve faculty and staff members of Texas A&M were on the program. Those from A&M presenting papers were Dr. H. O. Kunkel, J. L. Fletcher, Dr. Tom C. Cartwright, Leonard Packet, G. T. King and L. A. Maddox.

Others on the program from A&M were Dr. R. R. Shrode, Dr. A. M. Sorenson, Mrs. Duane Kraemer, Dr. R. E. Patterson, W. T. Berry and Sid Crawford.

'War & Peace' Named Choice Of 150 Writers

According to a list compiled by Broadcast Music, Inc., from some 150 authors, book critics, editors and other literary figures who have contributed to BMI's "The Book Parade," Leo Tolstoy's great novel "War and Peace" is the number one choice.

To choose the books the following question was asked: "If you were shipwrecked on, exiled to, or upon the advice of your psychiatrist, spending the remainder of your life on a desert island, which five books would you take along?"

The top ten were, besides "War and Peace," "Abraham Lincoln" by Carl Sandburg (the only living writer to make the top 20), "The Oxford Book of English Verse," "Huckleberry Finn and Tom Sawyer" by Mark Twain, "The Decline and Fall of the Roman Empire" by Edward Gibbon, "Walden" by Henry David Thoreau, "Don Quixote" by Miguel Cervantes, "The Divine Comedy" by Dante Alighieri, "Sherlock Holmes" by Sir Arthur Conan Doyle, and "The Golden Bough" by Jas. Gordon Frazer.

The contributors to the survey, among whom were eight Pulitzer Prize winners and several best-selling novelists, showed a marked preference for fiction, with 152 of the 356 books chosen falling into that category. Next came history and biography, with 69 books; poetry, 45; philosophy and theology, 38.

Scripture, Shakespeare, encyclopedias and "how-to-do-it" books were ruled out for this compilation, the contributors being told to assume the island to be well-stocked with them.

The Church ... For a Fuller Life ... For You ...

CALENDAR OF CHURCH SERVICES		
A&M CHURCH OF CHRIST 9:45 A.M.—Bible Classes 10:45 A.M.—Morning Worship 7:15 P.M.—Evening Service	FIRST BAPTIST CHURCH 9:40 a.m.—Church School 11:00 a.m.—Worship 6:30 p.m.—Training Union 7:30 p.m.—Worship	FAITH EVANGELICAL AND REFORMED CHURCH 9:15 A.M.—Sunday School 10:30 A.M.—Morning Worship 7:30 P.M.—Evening Service
OUR SAVIOUR'S LUTHERAN CHURCH 9:30 A.M.—Church School 10:45 A.M.—Morning Worship	A&M CHRISTIAN CHURCH 9:30 a.m.—Coffee Time 9:45 a.m.—Sunday School 11:00 a.m.—Morning Service 3:30 p.m.—Children's Fellowship 6:00 p.m.—Christian Youth Fellowship and Disciples Student Fellowship	CHURCH OF THE NAZARENE 10:00 A.M.—Sunday School 11:00 A.M.—Morning Worship 7:00 P.M.—Young People's Service 7:45 P.M.—Preaching Service
A&M METHODIST CHURCH 9:45 A.M.—Sunday School 10:55 A.M.—Morning Worship 6:00 & 6:45 P.M.—MYF Meeting	CHURCH OF JESUS CHRIST OF LATTER DAY SAINTS 10:00 A.M.—Morning Worship	COLLEGE HEIGHTS ASSEMBLY OF GOD 9:45 A.M.—Sunday School 11:00 A.M.—Morning Worship 6:30 P.M.—Young People's Service 7:30 P.M.—Evening Worship
CHRISTIAN SCIENCE SOCIETY 9:30 A.M.—Sunday School 11:00 A.M.—Morning Worship	A&M PRESBYTERIAN CHURCH 8:45 a.m.—Worship 9:30 a.m.—Church School 11:00 a.m.—Worship	BETHEL LUTHERAN CHURCH (Missouri Synod) 800 S. College Ave. Bryan, Texas 9:30 A.M.—Church School 9:45 A.M.—Morning Worship
ST. MARY'S CATHOLIC CHAPEL 7:00 a.m.—Mass 8:30 a.m.—Mass 10:00 a.m.—Mass	ST. THOMAS EPISCOPAL CHAPEL 8:00 a.m.—Holy Communion 9:30 a.m.—Sunday School 9:30 a.m.—Morning prayer and sermon 11:00 a.m.—Morning prayer and sermon	

THE SANDS OF TIME

Remember that old song which says, "the sands of time are sinking fast"? Whether we like the idea or not, it is most certainly true, and there is nothing we can do about it.

Nothing? That depends on what we mean. Assuredly we can do nothing to stop the sands of time from running through the hour glass of life, but we can do much to make those hours worthwhile, and the Church stands ever ready to help us.

The Church is made up of people like us, working together to spread the message of the gospel. The Church brings comfort to those who sorrow, gives strength to those who are weak. The Church needs us to help carry on its work. When we are busy in the Church helping others, we do not worry over the ceaseless flow of the sands of time.

Are you doing your part in the Church? Do you need its help? Its doors are open, its welcome unchanging. "The sands of time are sinking fast"—how are you spending the days and hours?

THE CHURCH FOR ALL... ALL FOR THE CHURCH

The Church is the greatest factor on earth for the building of character and good citizenship. It is a storehouse of spiritual values. Without a strong Church, neither democracy nor civilization can survive. There are four sound reasons why every person should attend services regularly and support the Church. They are: (1) For his own sake. (2) For his children's sake. (3) For the sake of his community and nation. (4) For the sake of the Church itself, which needs his moral and material support. Plan to go to church regularly and read your Bible daily.

Day	Book	Chapter	Verses
Sunday	Psalms	1	1-6
Monday	Psalms	139	1-24
Tuesday	Matthew	3	1-17
Wednesday	Matthew	4	1-22
Thursday	Matthew	5	1-16
Friday	Matthew	7	1-14
Saturday	Matthew	7	15-29

Battalion Classifieds

WANT AD RATES
One day 2¢ per word
1¢ per word each additional day
Minimum charge—40¢
DEADLINES
5 p.m. day before publication
Classified Display
80¢ per column inch
each insertion
PHONE 4-5324

Pets
Students: Board your dogs at special low monthly rates. The Bayard Kennels, on Highway 6 south of College. 6-4121. 75tf

Wanted
Deer Hunters Wanted, deer hunting by the day in heart of deer territory—one mile north of Norman Lake—\$4 per day. For further information call 3-4436. 66tf

PROMPT RADIO SERVICE
— Call —
SOSOLIK'S RADIO AND TV SERVICE
513 S. Main St.
(Across from Railroad Tower)
PHONE 2-1941 BRYAN

• ENGINEERING AND ARCHITECTURAL SUPPLIES
• BLUE LINE PRINTS
• BLUE PRINTS • PHOTOSTATS
SCOATES INDUSTRIES
603 Old Sulphur Springs Road
BRYAN, TEXAS

SPECIAL CHRISTMAS OFFER
An all expense paid week-end for two (2) at the Shamrock Hilton with each new 1956 Pontiac Strato-Streak purchase during the month of December.
ROY HENRY PONTIAC CO.
Hearne, Texas

For Sale
Chrome dinette, good condition—telephone 6-1122. 66tf

Work Wanted
Typing wanted to do in my home. Mrs. C. E. Carlson, Jr. Phone 3532, after 5 p.m. 100tf

Wanted to Rent
Two or three bedroom, unfurnished house, convenient to A&M. Permanent. Call 6-1654. 61tf

Special Notice
DOGS BOARDED: Clean comfortable quarters. Caucasian Boarding Kennels. Special rate to "Aggies".
49tf

OFFICIAL NOTICES
Official notices must be brought, mailed, or telephoned so as to arrive in the Office of Student Publications (207 Goodwin, 4-5324, hours 8-12, 1-5, daily Monday through Friday) at or before the deadline of 1 p.m. of the day preceding publication.—Director.

ALL DEPARTMENTS: The Official directory of offices, staff and students are ready for distribution now at 75¢ each. You may get your copy now at the Office of Student Publications, 207 Goodwin Hall, 347f

Dr. Carlton R. Lee
OPTOMETRIST
803A East 26th
Call 2-1662 for Appointment
(Across from Court House)

Folklore Contest Open To Students

The Texas Folklore Society is sponsoring a contest for the best paper on Texas folklore written by a college student.

The prize winning paper will entitle the winner to the first prize of \$25 plus being asked to read his, or her, paper at the 40th Annual Meeting of the Society on the A&M campus next spring.

The subject can be on any phase of folk tales, legends, ballads, superstitions and sayings. Examples may be found in the annual publication of the Texas Folklore Society.

The length should not exceed eight or nine double-spaced, typed pages which may be read orally in 15 minutes.

Entries must be submitted not later than February 1, 1956 to Hermes Nye, Program Chairman Texas Folklore Society 3309 Hood Street Dallas 19, Texas

Hoffman Diamond Cutting Co.

A LOW OVERHEAD OFFICE OPERATION

Save You Up To 40%

On Engagement Sets and Fine Diamond Jewelry

Hoffman
DIAMOND CUTTING CO.

3rd Floor Banker's Mortgage Building
"Next to the Gulf Building"
708 Main Street Houston

The Exchange Store
"Serving Texas Aggies"

Bryan Building & Loan Association
BRYAN

City National Bank
Member
FEDERAL DEPOSIT INSURANCE CORPORATION
Bryan

Lilly
Lilly Ice Cream Co. Bryan
MELLO CREAM
"A Nutritious Food"

Hillier Funeral Home
502 West 26th St. Ph. 2-1572
BRYAN, TEXAS

Extra Good Dairy Products
Milk—Ice Cream
3763
Sanitary FARM DAIRIES

Student Publications

★

College Station's Own Banking Service

College Station State Bank
NORTH GATE

Central Texas Hardware Co.
BRYAN
• HARDWARE
• CHINAWARE
• CRYSTAL
• GIFTS

Bryan Communities Since 1909

First State Bank & Trust Co.
Member Federal Deposit Insurance Corporation
BRYAN

Number
H
Dimes
Squar
Set Ja
The ann
Station M
square dan
DeWare Fi
Every
square danc
Dimes is in
being spons
ers Club of
talent and re
donated.
The follow
been appoint
rangements f
R. Lyle is Co
Joe Mogford
Mr. and Mi
in charge of
man, Sam F
Nance and
charge of fi
H. A. Luther
Potter, Mrs.
members of
are in charg
Mrs. L.
Palmer Bark
smith Jr., re
Boswell, R. R.
reational Cl
Richard Dow
ald Burchard
Brown, arra
the committe
"In addition
all attending
of entertain
freshments,"
Downward,
dance begins

TAES
4-H Cl
Peggy Lom
county home
in Tarrant C
has joined t
of the Agric
ice as an as
leader. She
lege Station
Miss Wilk
Grayson and
Texas State
4-H Club m
and in colle
Phi Epsilon
and profess
fraternity.

Skraba
Dr. R. L.
partment of
ics & Socio
a meeting in
regional L
Committee.
ing was to f
1956 Land T
shop and to
of future re
land tenure.