

Cotton Bowl Will Be Battle If Follows Records of Past

DALLAS (Spl.)—If the statistical history of nineteen prior Cotton Bowl games means a thing,

ding-dong battle here on Jan. 2. For the team averages over 19 Cotton Bowl games show that things have just about evened out over the years between host and visiting teams. And TCU and Mississippi—champions of their respective conferences and each with 9-1 records—have the 1955 background to make statistics come true.

Since 1936, there's been a difference of only 1.7 points between the average score of the host and visiting team, despite an average of four touchdowns per game. The home club has "won",

15.3 to 13.6, over the years. First downs are all even in the averages, and the visitors have a rushing edge of 180 yards to 168. But the Southwest Conference, hosts here for 17 of 19 games and the automatic home team since 1941, more than offsets this deficit with its traditional passing advantage. SWC teams have a 100-yard pass gain average in the 19 games off the throwing talent of such stars as Sam Baugh, Bobby Layne, Tobin Rote and Doak Walker.

The even-seven statistics show up in pass interceptions (one each per game), in punts (36.5 yards for the hosts against 36.7), and penalties (31 yards for the home team and 40 for the visitors).

For all of this, the host has won 10 games of the 19, with six losses and three ties. And statistics even predict good weather for the Cotton Bowl game—nine have been played in ideal weather, seven under clear but cold conditions and only three game days have been disagreeable.

And if 1955 statistics are an accurate measure, the twentieth Cotton Bowl renewal will see TCU take a slight edge in first downs and in rushing gains, while Mississippi has the advantage in passing and kicking.

The score: TCU has averaged 29 points per game this year and Mississippi has averaged 25.

So, if statistics and football history mean a thing, the game in Dallas will be crowded with a free-scoring but tightly-fought action. Too, statistics may not mean a thing, but the form predicts another thriller in the list of exciting Cotton Bowl classics.

LOOK! Texans have been saving money with STATE FARM MUTUAL

More than 25¢ out of every \$1 has been returned to Texas policyholders by State Farm Mutual, the "Careful Driver Insurance Company."

For top notch protection call

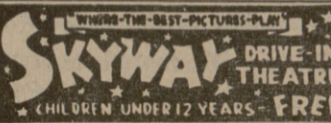
U. M. ALEXANDER '40
215 S. Main Ph. 3-3616
BRYAN



See Joe Faulk '32 for —

Auto Parts
Seat Covers
Crosley-Bendix
Appliances

JOE FAULK'S
AUTO & APPLIANCE
STORE
214 N. Bryan 2-1669



Wednesday thru Friday
"GENTLEMEN MARRY BRUNETTES"
with JANE RUSSELL
Plus—
"CONQUEST OF SPACE"
with ERIC FLEMING

OPEN FOR ALL BANQUETS, DINNERS
RECEPTIONS, WEDDINGS AND LUNCHEONS

MAGGIE PARKER DINING HALL

2-5089

"The Oaks" — 3-4375
BRYAN

North-South Game Set For Monday

MIAMI, Fla. (AP)—The North and South College All-Star football squads will clash Monday in the annual North-South game at the Orange Bowl and it seems a sure bet coaches on both sides will look first to their air attacks.

SHOP HERE FOR CHRISTMAS DINNER

Specials

GROCERIES

- Tea Garden—Seedless—20 Oz. Jar
- BLACKBERRY PRESERVES .39c
- Libby's PUMPKIN . . . 2—303 cans 27c
- 46 Oz. Can—Libby's TOMATO JUICE29c
- 46 Oz. Can—Libby's PINEAPPLE JUICE29c
- Libby's Crushed—No. 2 Can PINEAPPLE25c
- Libby's Whole Spiced—No. 2 1/2 Can PEACHES41c

GROCERIES

- Libby's Halves—No. 2 1/2 Cans PEACHES33c
- Green Giant—Big Tender GREEN PEAS . . . 2—303 cans 41c
- Niblets MEXI-CORN2 cans 29c
- Kimbell's—Whole GREEN BEANS .2—303 cans 41c
- Duncan's Maryland Club COFFEE . . . 1 Pound Can 89c
- Libby's—Sliced RED BEETS . . . 2—303 cans 33c
- Elmer's Candy MINT BUBBLEScan 29c
- 3 Pound Can Mrs. Tucker's SHORTENING79c

FROZEN FOODS

- Pictsweet — SLICED PEACHES PKG. 27c
- Pictsweet — SLICED STRAWBERRIES PKG. 27c
- BABY LIMAS Pkg. 27c
- FORD HOOK LIMAS
- CUT GREEN BEANS27c

PRODUCE

- LETTUCEhead 10c
- CELERYstalk 10c
- LEMONSdoz. 23c
- KUM QUATSqt. basket 25c

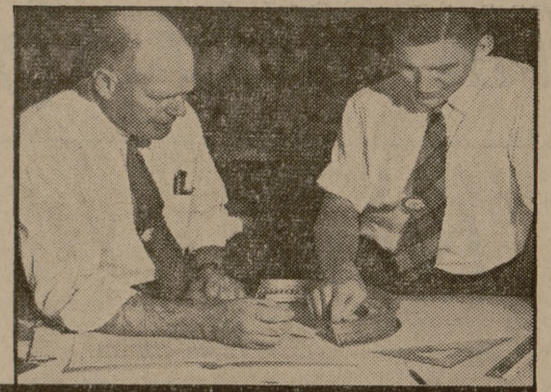
MARKET

- PEN FED BABY BEEF CUTS —
- ROUND STEAKlb. 69c
- LOIN STEAKlb. 69c
- T-BONE STEAKlb. 69c
- VEAL CHOPSlb. 59c
- PORTER HOUSE STEAK . lb. 49c
- Square Cut SHOULDER ROAST . . . lb. 39c
- Meaty SHORT RIBSlb. 29c
- Armour's Star Pure—1 Lb. Roll PORK SAUSAGE31c

CHARLIE'S FOOD MARKET

NORTH GATE — WE DELIVER — COLLEGE STATION
SPECIALS FOR THUR. AFTERNOON, FRI. & SAT. — DEC. 22-23-24

What's doing at Pratt & Whitney Aircraft



Nowhere else can engineering graduates utilize their training more fully than in the rapidly evolving field of aircraft propulsion. Work is well under way on the development of even more advanced powerplants — jet, turboprop, nuclear.

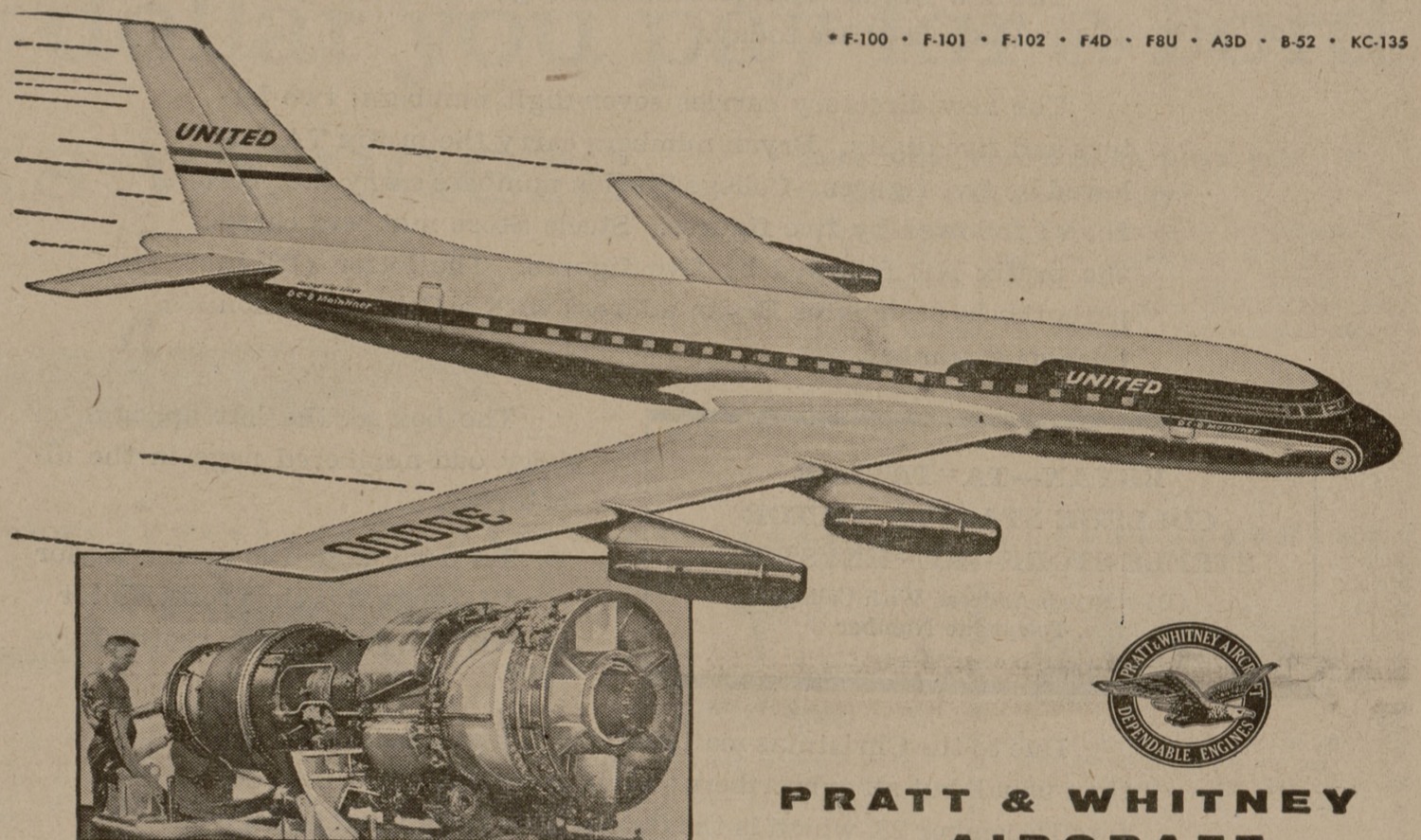
Domestic Travel in the Age of Jet Transports

Starting in 1959, United Air Lines' flight time between Los Angeles and New York will be 4 1/2 hours — between Chicago and New York, only 90 minutes. By placing the first contract order for jet transports to be used in domestic operations, United Air Lines has upheld its reputation as a pioneer in American air travel. Its new fleet of 30 Douglas DC-8 Clippers will be powered by the most powerful production aircraft engines in the world, J-57 turbojets, designed and developed by Pratt & Whitney Aircraft.

It is only a matter of time until jet transports are

standard equipment along the air lanes of the world. The large majority of them will be powered by Pratt & Whitney aircraft jet engines — an achievement of great significance.

A jet-turbine powerplant that develops 10,000 pounds of thrust — or more — involved some of the most complex problems of present-day engineering. A glance at the roster of today's J-57-powered military aircraft* is proud testimony to the success with which those problems were resolved by Pratt & Whitney Aircraft engineers



* F-100 • F-101 • F-102 • F4D • F8U • A3D • B-52 • KC-135

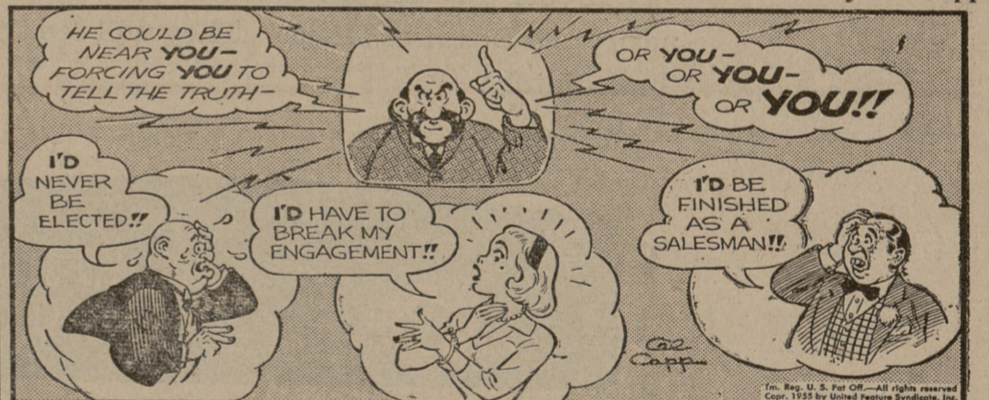
Pratt & Whitney Aircraft J-57 Turbojet is blazing the way for a new generation of American aircraft. Already powering many of the most important types of military airplanes, the J-57 is now leading the world into an era of commercial jet transportation.

PRATT & WHITNEY AIRCRAFT

DIVISION OF UNITED AIRCRAFT CORPORATION
EAST HARTFORD 8, CONNECTICUT

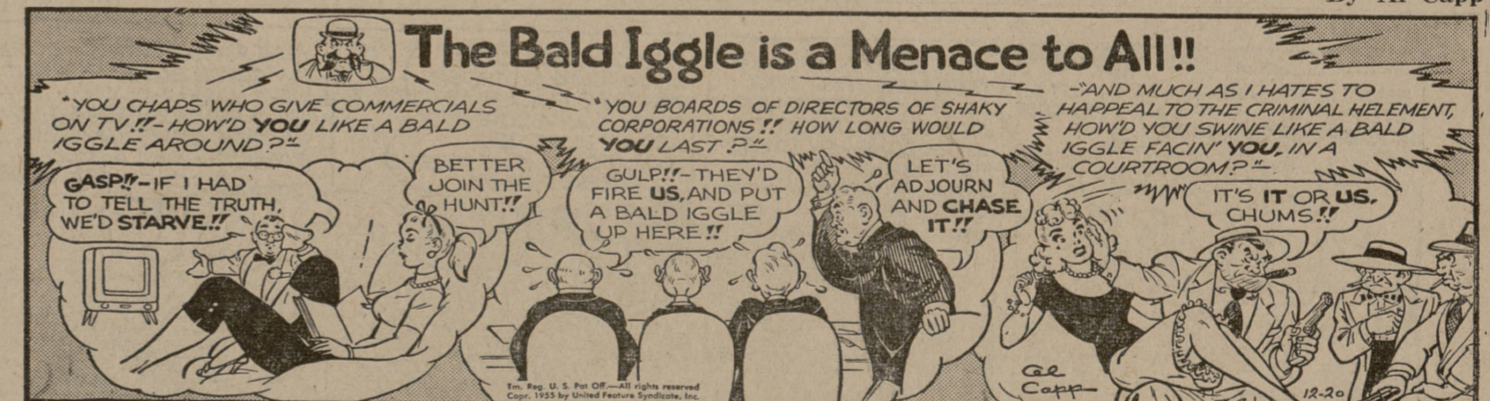
World's foremost designer and builder of aircraft engines

LPL ABNER



By Al Capp

LPL ABNER



By Al Capp

LPL ABNER



By Al Capp