

What's Cooking

7:30
 Texarkana-Four States Home-town Club; room 203 Academic.
 Amarillo Hometown Club; room 108 Academic.
 Anderson County Hometown Club; room 228 Academic.
 Houston Hometown Club; 107 Biological Sciences Building; final plans for Christmas dance.
 Southwest Texas Hometown Club; YMCA; discuss Christmas dance.
 Permian Basin Club; YMCA; final plans for Christmas dance and rides will be discussed.
 Williamson County Club; room 3B MSC.
 Southwest Louisiana Hometown Club; room 11 Civil Engineering Building; plans for Christmas party; short.
 Denton-Wise County; room 206 Academic; very important so every body show up.
 Waco-McLennan County; YMCA; special Wives Night; refreshments will be served.
 Trans-Pecos Club; C.E. Lecture room; final plans for Christmas party and rides home.
 San Antonio Hometown Club; Christmas party Dec. 28 at Aggie Park in San Antonio; 8:30; set-ups free.

Who's Who

This is the last of the Who's Who choices that have been running in the Battalion for the past two days.

Herbert W. Whitney—Memorial Student Center, vice-president 1954-55, president 1955-56; First Student Conference on National Affairs, co-founder, Executive Committee; D.M.S.; winner of Square D Scholarship 1954; Phi Eta Sigma; Debate team winner, Ohio State University Debate Tournament 1954; Lt. Col., Corps of Cadets; president, Texas Presbyterian Student Association 1955; Republic Aviation Award 1955; Great Issues co-founder.

William D. Willis Jr.—Basic Division Council; vice-president, Phi Eta Sigma; Pre-Medical & Pre-Dental Society; intramurals; co-editor, MSS I; editor, MSS II; senior advisor, MSS III; president, Texas Collegiate Academy of Science; vice-president and president, Arts & Sciences Council; president, English Club; associate editor of Commentator; Aggie Sweetheart Committee; Julia Ball Lee Scholarship; honorary member, Texas Academy of Science; Phi Kappa Phi; Inter-school Council Committee; MSC Council; chairman of MSC Junta Committee.

Robert W. Young—Student Senate, chaplain, chairman of Welfare Fund Committee; Student Engineering Council; Senior Court; AIEE; Group commander, representative to Texas Intercollegiate Student Association; Baptist Student Union; Former Students Association Scholarship; freshman slide rule contest winner; Phi Eta Sigma; Eta Kappa Nu; Tau Beta Pi; D.M.S.

Squadron 19 Hosts Children

Squadron 19 entertained 28 less fortunate children of College Station-Bryan area Tuesday in place of their annual outfit party.

Along with games the children broke the Pinatas, which held candy and gifts, a Spanish custom. Refreshments of hot chocolate, cupcakes, and ice cream were served.

Each child was presented with a gift from the Squadron members.

You can keep an unopened canned ham in your refrigerator for weeks, but only about one week after it's open. Good for emergencies!

Hoffman Diamond Cutting Co.
 A LOW OVERHEAD OFFICE OPERATION
 Saves You Up To **40%**
 On Engagement Sets and Fine Diamond Jewelry

Hoffman
 DIAMOND CUTTING CO.
 3rd Floor Bankers' Mortgage Building
 "Next to the Gull Building"
 708 Main Street Houston

- No. 1 Can—Friskies **DOG FOOD . . . 6 for 79c**
- Northern White or Colored 3 ROLLS FOR **TOILET TISSUE . . . 25c**
- 5c Off Deal—ALL-SWEET **MARGARINE . . . lb. 25c**
- Gold Coast—No. 2 1/2 Can **SPICED PEACHES . 29c**
- Winslow Cut—300 Can **ASPARAGUS 29c**
- Del Monte Cream Style Golden—No. 303 **CORN . . . 2 cans 33c**
- Kobey's Shoestring—No. 300 Can **POTATOES . . can 10c**
- Hunt's Solid Pack—No. 300 Can **TOMATOES . . . can 21c**
- "Handy for the Home" 2 ROLLS FOR **SCOTT TOWELS . . 33c**
- Wax Paper—125-Ft. Roll **CUT-RITE 25c**

Baby Emerald
WALNUTS
 2 lb. bgs. 98c

SUNGOLD

OLEO 2 Lbs. 33c

GLADIOLA

FLOUR 5 LB. BAG 39c

IMPERIAL PURE CANE SUGAR
546c

EXTRA FINE GRANULATED
IMPERIAL SUGAR
 IMPERIAL SUGAR CO. HOUSTON, TEXAS

FROZEN FOODS

- Pasco—Fresh Frozen **ORANGE JUICE 3 6-Oz. Cans 39c**
- Birds Eye Fresh Frozen—**FORDHOOK LIMA BEANS 10-Oz. Pkg. 25c**
- Birds Eye Fresh Frozen **FRENCH FRIES 2 9-Oz. Pkgs. 33c**

DRUGS:

- Shulton's Desert Flower **HAND LOTION 8-Oz. Bottle 1.00**
- Shulton's Old Spice **SHAVE LOTION 1.00**

Stop That Headache . . . Ask For

BAYER'S ASPIRIN
 bottle of 100 **49c**

WINESAP RED
APPLES 4 Lb. Bag 29c

★ TWO CONVENIENT LOCATIONS ★
SUPER ORR'S MARKETS
BEST IN BRYAN
 200 E. 24TH ST. 3516 TEXAS AVE.



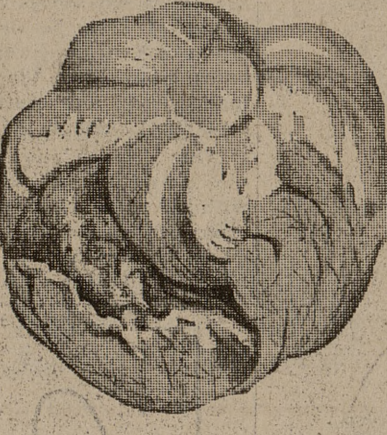
- Del Monte **PUMPKIN 2 No. 303 Cans 27c**
- COFFEE **ADMIRATION Lb. Pkg. 81c**
- SHORTENING **CRISCO 3 Lb. Can 81c**
- Delicious **HIC ORANGE HI C DRINK 46 Oz. Can 27c**
- POWDERED or **BROWN SUGAR 2 Lb. Ctn. 25c**

- Patio Chicken **ENCHILADAS 303 Can 39c**
- Patio Mexican Style **BEANS 2 No. 303 Cans For 25c**
- Patio Plain **CHILI No. 303 Can 35c**
- Patio Beef **TAMALES No. 300 Can 21c**

SWIFT'S FULLY COOKED **PICNICS LB. 35c**

Hormel's Dairybrand Sliced Breakfast **BACON LB. 43c**

CHUCK STEAK Orr's Gold Seal Lb. 39c



Fresh Firm **LETTUCE**
BIG HEAD 9c

- POT ROAST Baby Beef Lb. 35c**
- PORK RIBS Lean Small Lb. 35c**
- FRANKS Blackhawk Rath Lb. 39c**
- STEAK Pin-Loin Veal Loin Lb. 53c**
- DUCKLINGS Long Island Lb. 57c**
- LILLY MELLORINE 1/2 Gal. 55c**

STRICTLY FRESH **BUDGET LARGE**

EGGS Doz. 49c

Joyce Lane—51 Ga., 15 Den. **NYLON HOSE BY THE BOX 3 Pcs. \$2.39**

- NONE SUCH MINCE MEAT 2-9 Oz. Pkgs. 49c**
- TEXSUN GRAPEFRUIT JUICE 46 Oz. Can 21c**
- RITZ CRACKERS — 8 Oz. 21c**

Number
Ten T SVM
 Ten A&M the 17th Qu the Student in Athens, Jan. 1.
 Buses are and Austin tives from T versities to University o
 Attending Park from Casalta, Ven sen, Peru; R art Coffman, ry Scott, Joe Bill Riveira, Mrs. Robert ley Foundat the students.
 Three ma for the conf Richard Sha and the Rev
 The Rev. thor of "En tion," one used in prep ence. Dr. M Princeton P Seminary an is pastor of Travancore,
 There will U.S. and I, dents at the have as it's Reconciliation
Lions C Trees
 The Colleg is selling Ch use the pro poses, accor Grumbles.
 Trees are Western Au Gate. Altho ited number are of a top
 Table d snow, firepr other article be sold.
 The proced be used for ing glasses children, and poses.
 The store to 7 p.m. on 3 to 9 p.m. day.
 The trees Christmas E
BABY, I terday fo the Whar ing halfth who head