

12th Man Bowl Teams Stage Two-Hour Drill

By BARRY HART
Assistant Sports Editor

Brisk weather brought out some hustling determination as the Maroon and White teams, opponents in the 1955 12th Man Bowl, opened the second week of workouts Monday.

Winkler of the Maroon squad and Ronald Robbins of the White, sent their charges through a hard two-hour practice that left the teams moaning and panting when it came time to hit the showers.

Both squads worked out in shorts or sweat suits with shoes and helmets. Robbins ran his backs and

ends through their plays while his line coaches, Henry Clark and Dee Powell worked the front men on blocking and tackling.

IN THE MAROON camp head coach Winkler opened the session with a chalk talk on plays. Winkler and Gene Stallings put their line through a long blocking drill while Gene Henderson and Don Watson, backfield coaches, ran the backs on plays.

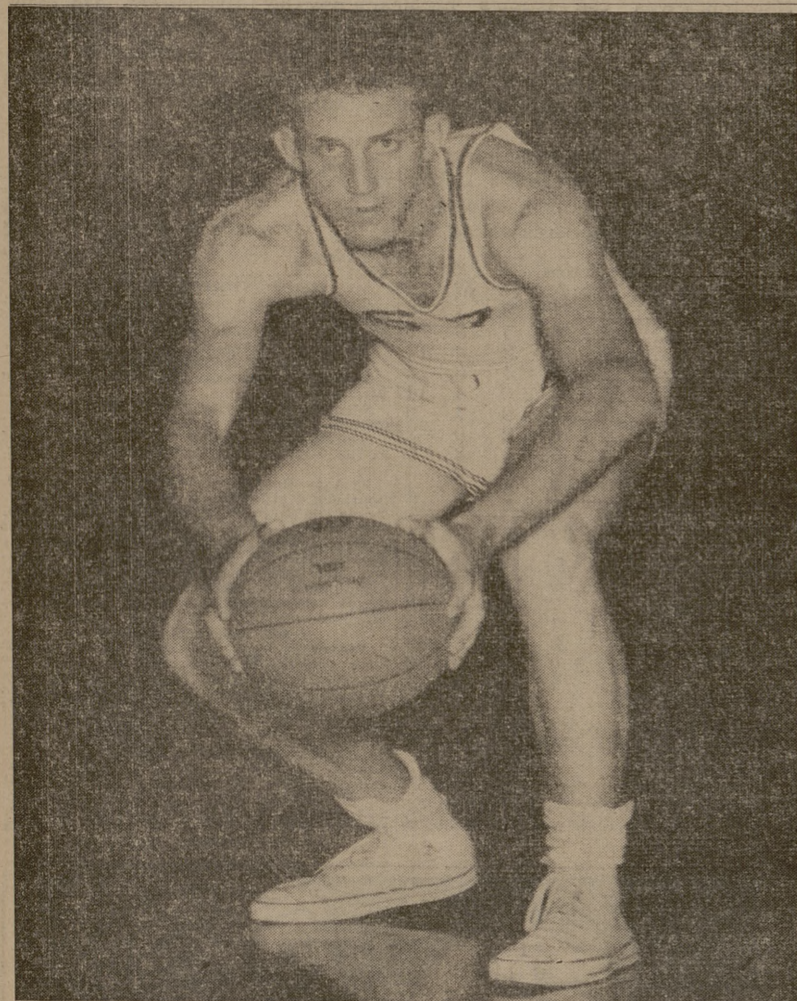
"We had some good workouts last week," said Winkler, "but we don't know enough about the boys yet and it's too early to begin designating possible starters."

Both coaches agreed it was too early to name their number one men, and that many positions would not be decided until after the squads go into full pads next Monday. The game is to be played at 3 p.m. Thursday, December 15 on Kyle Field.

THE CONTEST, which first originated in the early 40's, then died out during the war, was begun as an annual event in 1952. Since then it has brought more than \$4,000 into the student aid fund.

The game will be played under high school rules—unlimited substitution with eight-minute quarters.

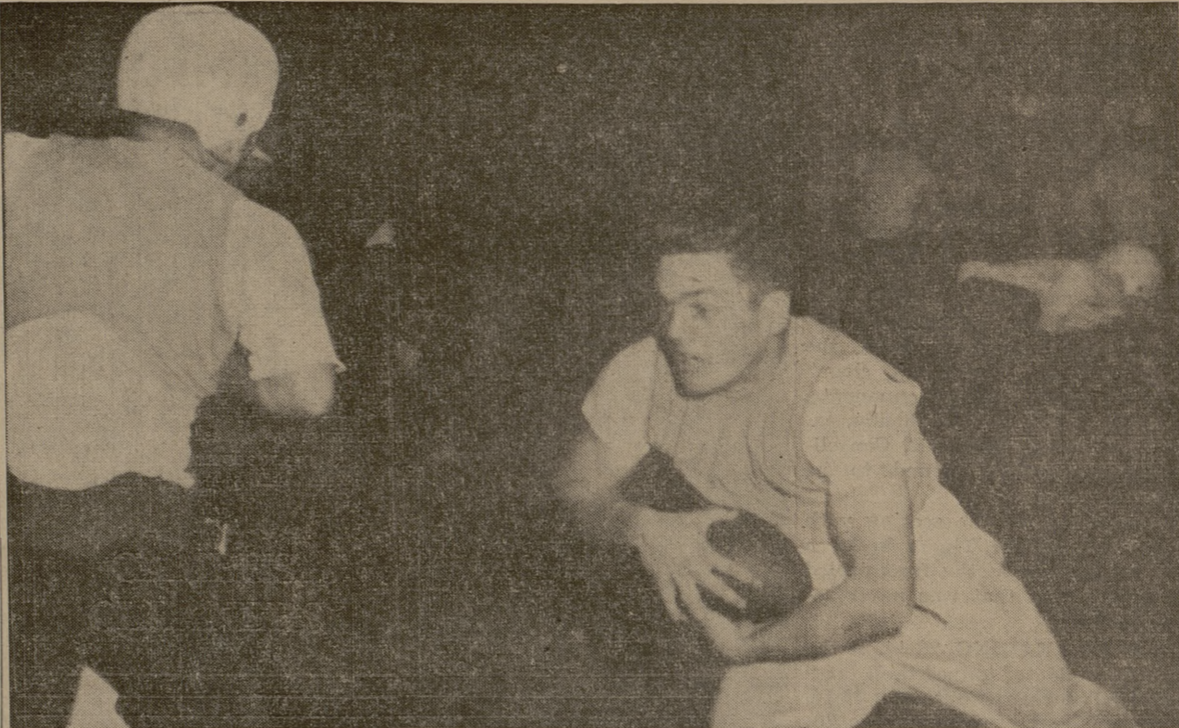
Tickets are on sale for 50 cents at Student Activities and are being handled through the unit and dorm athletic officers and representatives.



DON BILBREY was a starting forward for A&M last season. The 6-4 senior hails from Victory, Okla. While lettering last year Bilbrey scored 35 points and was outstanding on defense.

MURAL STANDINGS

All-Sports CIVILIANS		
Teams		Pts.
1. Leggett Hall		160
2. Mitchell Hall		70
3. Walton Hall		65
CORPS CLASS A		
1. B-Engineers		130
Sqd. 17		130
2. A-Chemical		120
D-Field		120
A-Engineers		120
3. Maroon Band		115
Sqd. 7		115
4. A-TC		105
CORPS CLASS B		
1. B-Engineers		135
2. A-Athletics		122 1/2
3. Sqd. 12		120
4. B-Field		117 1/2



ACTION in the Maroon team camp, coached by Larry Winkler. The Maroon team meets a White team coached by Ronald Robbins in the annual 12th Man Bowl game Dec. 15.

In 'Mural Football

B-AAA Fish Stop Sqd. 24 Streak

By JOE DAN BOYD

B-AAA snapped Sqd. 24's undefeated streak yesterday, 13-6, to send them into the final rounds of freshmen football competition.

James Spivey scored first for B-AAA, running over from the 2 yard line. Dick Thomas passed to Sqd. 24's Cliff Tuttle for the tying score moments later. The winning score came when Sam Martinez intercepted one of Thomas' passes and scored on a 25 yard run.

Sqd. 8 also fell from the unbeaten ranks as Sqd. 17 edged them 12-8. Raymond Rice and Junior Durham chalked the tallies for Sqd. 17. Durham's 50 yard TD run came when he intercepted a John Johnson pass to cinch the ball game.

A-AAA bowed to Sqd. 12 by a margin of two penetrations as the two teams battled to a 6-6 draw. It was primarily a game of de-

fensive standouts on both sides. Dale Lovelace and John McCade anchored the A-AAA line and Allen Pearson was the Sqd. 12 ace.

C-Infantry remained in playoff running with a 12-6 victory over Sqd. 19. Henry Bunson went over on an option play run for the first Infantry score and Edward Ayres held on to one of Jim Vorba's aeri-als for the score. Joe Sail provided the lone Sqd. 19 run over paydirt.

Tom Brown's fine passing led Sqd. 6 to a 7-0 win over a defense-minded White Band. Brown went over for the score from the 1-yard line.

In Upperclassman basketball A-Composite ground out a 25-10 win over A-FA and won their league championship. Sqd. 18 drubbed Sqd. 8, 21-16. Powerful Sqd. 19, league champions, handed winless B-FA a 59-2 trouncing.



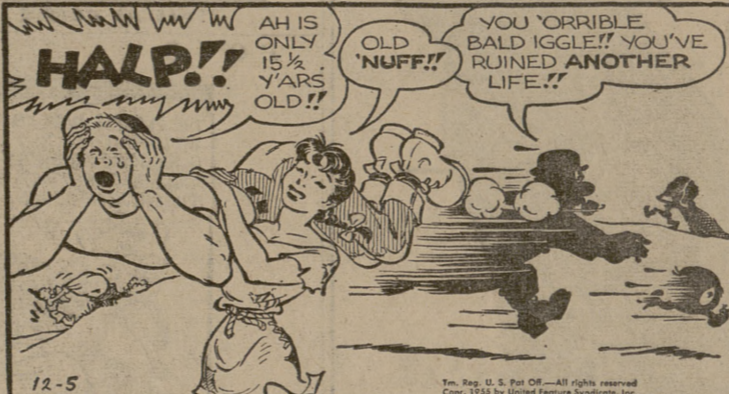
Well, Mr. Smarty, who knows a good way to clean clothes with gasoline. . . Maybe next time you'll send them to —

CAMPUS CLEANERS

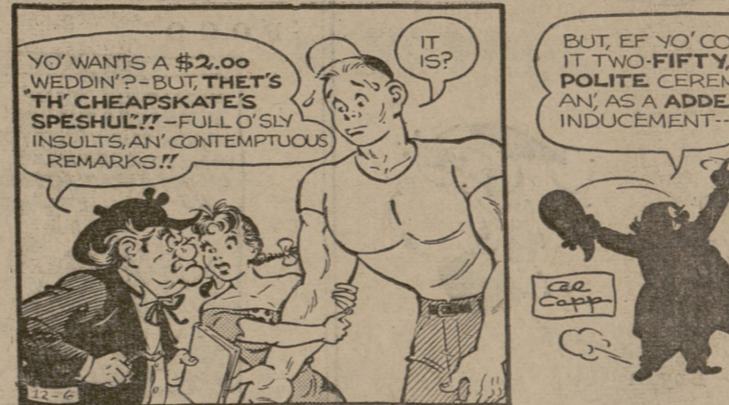


Have that Portrait Made . . . before Dec. 10 for Christmas.
A & M Phot Shop
No. Gate 4-8844

L'L ABNER



L'L ABNER



CASH for your . . .
BOOKS
LOUPOT'S

Gulton Hall
THEATRE
TODAY & WEDNESDAY
M-G-M's greatest
Suspense-drama in years!
in COLOR and CINEMASCOPE
SPENCER TRACY
ROBERT RYAN
BAD DAY AT BLACK ROCK
Just the Way it Happened!

Michigan State pitcher William Mansfield is the president of the student government organization for 1955-56.

See Joe Faulk '32 for —
Auto Parts
Seat Covers
Crosley-Bendix
Appliances
JOE FAULK'S
AUTO & APPLIANCE
STORE
214 N. Bryan 2-1669

CIRCLE
LAST DAY
"Lady And The Tramp"
— ALSO —
"War of The World's"

CAMPUS
THRU WEDNESDAY

KIRK DOUGLAS
SILVANA MANGANO
ULYSSES
ANTHONY QUINN • TECHNICOLOR

Triangle
DRIVE IN DINING ROOM
90c LUNCH
Served from 11 until 2
PLATE LUNCHES
Soup or Juice — 2 Vegetables
Meat — Coffee or Tea — Dessert
Triangle Banquet Room
BY RESERVATION ONLY FOR LUNCHEONS, DINNERS, RECEPTIONS, WEDDINGS AND BANQUETS

CALLS CAN'T ALL GO THROUGH AT THE SAME TIME—SO—

IF YOU PLAN TO MAKE LONG DISTANCE CALLS THIS CHRISTMAS

Avoid the rush...call before the Holidays!

Many of you will want to talk with far-off loved ones at Christmas or New Year's. But on those two days telephone lines are always crowded. There are extra operators on duty who have given up their Holidays to help handle the extra demand—yet no matter how fast and expertly they work, there's bound to be delay on some long distance calls.

Avoid the rush: make Holiday calls before Christmas Day.

to help speed your long distance calls, please give the operator the out-of-town telephone number.

We sincerely wish all our customers and friends the very happiest of Christmas seasons and a joyful New Year.

Serving Texas, Arkansas, Oklahoma, Louisiana
THE SOUTHWESTERN STATES TELEPHONE CO.

By Al Capp

By Al Capp

Exc
Here's
foreign
ing tit
history
1. AMERIC
Episodes in
Aaron. Fr
of key eve
War, the C
perts. Pub.
2. BERNAL
CAMPBELL
between th
great actr
letters. Ed
Pub. at 5.0
3. NEW S
Shepherd
science's d
use of num
511 pp. Pu
4. Thomas
The gr-at
medieval
a Pope an
mortal an
genius. Or
5. MAN T
Absorbing
science, phi
the ages.
6. The Wei
TALS OF
Derleth. O
fiction and
the top me
Orig. 3.75.
7. Fall of
Harvig A
true accou
Pub. at 3.0
8. THE BO
land Rice,
Keeler. Th
goldom's f
of all the
famous mat
53 photogr
9. DOGS A
Heartwarm
paris, by C
tos. Pub. i
10. THE W
A moving
revelation.
11. Mora
POSTS, by
help on he
social righ
values, etc.
12. Early
D. Douglas
Revere's fa
of the Hug
land. Pub.
13. Arthur
ING. The
penetrating
caught in
ern Europe
14. Americ
B. Partridg
on wheels.
rare phot
111. JESU
Rops. Arc
Protestant
ever writt
as a livin
every Chri
Pub. at 5.0
112. CONG
W. von B
eiting pre
vividly des
ing scient
space vehi
the moon,
there, etc.
imaginativ
Pub. at 4.5
113. THE
Donald D
mankind's
concern—
ancient tir
Pub. at 5.
114. HIGH
by R. O'C
whiskey, y
kon—in th
Orig. 3.50.
115. ANNA
Thrilling,
Himalayan
heroic con
hiding in
human ap
pense and
Illus. Ori
116. PHOT
Sprungma
picture-tak
port alike,
cameras
photos. P
160. T
AS A
sion
fice o
great
at 4.0
161. T
IN YO
noid,
panera
its pe
os, co
ors,
162. T
OF D
ers.
the o
olis.