

# Frogs 10th In Nation, Ags Drop to 12th Place

By RONNIE GREATHOUSE  
Battalion Sports Writer

TCU took the lead in the Southwest Conference football race today — that is if you use the Associated Press' national rankings as a guide. The Aggies, who humbled the Horned Toads earlier this season, 19-16, were dropped one notch to 12th place while TCU broke into the 10th spot, 147 votes ahead of A&M.

Despite the sports writer's gracious gesture toward the Froggies, A&M still leads the Conference "officially" with two wins, no losses and a tie. Texas and TCU are tied for second place with 2-1 won-lost records.

Right now the Aggie players and coaches aren't as worried about national rankings as they are with

the mammoth SMU Mustangs, who they face Saturday night.

"I don't know how much they outweigh us, but it's a whole lot," said Coach Paul Bryant, yesterday after practice. "Ya' know, it takes a pretty courageous little fellow to line-up against all those big fellas."

The SMU forward wall, anchored by such heavies as 256 pound Tiny Goss and 240 pound Eric Knebel, will out weight Bryant's "Light Brigade" by almost 23 pounds per man.

Dennis Goehring, A&M's starting right guard, will have the job of moving either Goss or Knebel Saturday. Dennis weighed in just shy of 183 pounds after practice yesterday.

The Cadets and Ponies have no common foe this season, but an indication of the strength of the two

squads can be seen in SWC statistics. SMU ranks just ahead of A&M in both offense and defense, having gained 309.8 yards on the attack and given up only 211 yards on defense. A&M has an average of 302.3 yards per game on offense, and 214 on defense.

Coach Bryant seemed pleased with the Aggie practice yesterday. The Aggies had a short scrimmage under game conditions, and worked on defense against SMU plays.

The slashing running of full-back George Gillar, and the passing of Grant, Wright, Watson and Crow were the high points of the afternoon.

"Gillar's looking far better than anyone on offense, and stands a good chance of starting Saturday," Bryant remarked. "Conrad will probably start somewhere too, maybe at right halfback."

In six straight games now, the Aggies haven't had a punt returned against them. They have kicked 30 times and allowed 28 yards in returns, all in the UCLA game, for an average of only 0.9 yards per-runback.

## Basketballers Open Workouts With Scrimmage

A&M's 1955-56 basketball team opened workouts yesterday as head coach Ken Loeffler put both squads through a 45-minute scrimmage.

Loeffler divided the 39 candidates into four teams and worked them at the same time on passing and ball handling. He sent the varsity in early and watched the 22 freshmen hopefuls. He will cut both squads to 12 men.

"George Mehaffey, Fritzie Connelly and Roger Harvey seem to be a little further advanced," said Loeffler, "and may become the core of the team." He added that shooting and speed will get first priority on the selection of the starting lineup.

Varsity candidates and experience: John Fortenberry—Sr. 2L; Bill Brophy—Jr. 1L; Roger Harvey—Jr. 1L; George Mehaffey—Jr. 1L; Ted Harrod—Jr. 1L; Don Bibrey—Jr. 1L; John Henry—Jr. 1L; Jeff Penfield—Jr. squadman; Fritzie Connelly—soph; John Lesker—soph; Bryan Southerland—soph; Carter Williams—soph; Tom Kelle—soph; Ken Hutto—soph; Al Love—JC transfer; Tom Sawyer—JC transfer.



BOBBY JOE CONRAD will "start somewhere" for the Aggies Saturday according to Coach Paul (Bear) Bryant. The versatile Clifton sophomore has been used at three positions so far this season, quarterback, end and halfback. Bryant had another such versatile player at Kentucky—He was Steve Meilinger, an all-American.

# Squadron 16 Tops A-QMC In Football

By JOE DAN BOYD  
Intramural Sports Writer

Dick Clements ran and passed a hustling Squadron 16 football team to its second victory in freshmen intramurals Monday.

Dominating the entire game, but scoring only once, the Sqd. 16 Fish refused to allow a single penetration in their 6-0 triumph over A-QMC.

Bobby McMillan and Denny Upham were the key figures in the Quartermaster defense, while Ray Hart looked good on offense. McMillan was also a standout at quarterback, executing some fine passing plays.

A Clement pass snagged by Pete Gould set up the Sqd. 16 scoring drive which ended with Paul Martin taking another Clement toss over for the tally. The conversion try was no good.

Duncan Watwood and Paul Martin guarded the Sqd. 16 line with complete authority. Both showed

versatility, standing out on both offense and defense.

In another football thriller B-Composite's Eugene Simms capitalized on a Sqd. 19 bobble. The Sqd. 19 quarterback juggled the pigskin on a bad pass from center, and in his effort to hold onto the ball, Simms came in, took the ball and was over for a touchdown to tie the game. Sqd. 19 won on penetrations.

Sqd. 18 downed A-Composite by two penetrations; Sqd. 7 blanked A-Chemical 12-0; and A-Signal walloped Sqd. 15 15-0.



LOYD HALE has been one of the most consistent performers in the Aggies' light forward wall this season. Weighing in at only 188 pounds, Loyd has pushed heavier opponents, like TCU's Hugh Pitts, all over the field.

## BATTALION CLASSIFIED

**WANT AD RATES**  
One day . . . . . 2¢ per word  
1¢ per word each additional day  
Minimum charge—40¢  
**DEADLINES**  
5 p.m. day before publication  
Classified Display  
80¢ per column inch  
each insertion  
PHONE 4-5324

### For Sale

Draftsman drawing table. Made in M.E. Shop. B-2-D College View after 5:00 p.m. 4113

Smith-Corona portable typewriter with carrying case, \$50, cash 105 East Sulphur Springs Rd., C.S., phone 6-2309. 4113

WILL SACRIFICE . . . . . New 7-piece Sheffield Silver Service Set. See R. F. Johnson after 5:30 p.m. Monday through Friday, C-7-B College View. 4013

Solid cherry wood antique Secretary Desk. \$100.00. Dressing table and stool, \$5.00. Living room end table lamps \$25.00 pair. Phone 6-4774. 4013

1947 Packard Custom 4 door sedan — 39,000 miles on new engine-body, tires and upholstery in excellent condition. Best offer over \$300. 404 Francis Dr., College Hills, phone 4-4743. 4012

### For Rent

Room for rent: Southeast bedroom, private bath, meals, ph. 3-4375. Mrs. Maggie Parker. 281f

### Pets

Students: Board your dogs at special low monthly rates. The Bayard Kennels, on Highway 6 south of College. 6-4121. 7511

### Wanted

Students to work Kyle Field Concessions for SMU and Texas games. Contact J. C. Wallis. 4014

### Lost

Converse All Star tennis shoes and gym shorts. Jerry Gleason, Dorm 10, Room 112. 3913

Dr. Carlton R. Lee  
OPTOMETRIST  
803A East 26th  
Call 2-1662 for Appointment  
(Across from Court House)

### Work Wanted

Will care for children at my home during the day and at night at 404 Second St. (North Gate) Phone 6-4466. 4018

Typing wanted to do in my home. Mrs. C. E. Carlson, Jr. Phone 3532. after 5 p.m. 1001f

### Special Notice

#### ATTENTION WORKING MOTHERS

We guarantee that your child will be happy in our nursery school. Ages through 4. Music, art, games, meals. 24 hour service. Phone 4-9761. 91f

### OFFICIAL NOTICES

Official notices must be brought, mailed, or telephoned so as to arrive in the Office of Student Publications (207 Goodwin, 4-5324, hours 8-12, 1-5, daily Monday through Friday) at or before the deadline of 1 p.m. of the day preceding publication.—Director.

To bring the College Calendar in conformity with Article VI, Section 5 b, of House Bill 140, 54th Legislature, the official Christmas Recess will end at 8 a.m. on January 3, 1956, instead of January 2 as originally published in the Undergraduate Catalogue for the Sessions of 1954-55 and 1955-56. 4114

J. P. Abbott  
Dean of the College

"All students who expect to receive a degree at mid-term are reminded that orders will be taken for graduation announcements at the Department of Student Activities from November 7th through December 7th. 4118

C. G. (Spike) White, Director  
Recreation & Entertainment

"Four Fellowships of 700 pounds each, for study at either Oxford or Cambridge University during 1956-57, will be awarded to qualified American students under the terms of the Charles and Julia Henry Fund. Both men and women are eligible. Preference will be given to recent college graduates of distinction or to students who will receive the Bachelor's degree with distinction before July 1, 1956. Applicants must present a definite scheme of study or research; they must be unmarried and prepared to devote their whole time to the objects of the Fellowship. Applications close January 15, 1956. Students in residence may secure further information from the Office of the Dean of the College. Application forms may be obtained from the Secretary of Yale University, New Haven, Connecticut, or from the Secretary to the Corporation, Harvard University, Cambridge 38, Massachusetts." 4013

ALL DEPARTMENTS: The Official directory of offices, staff and students are ready for distribution now at 75¢ each. You may get your copy now at the Office of Student Publications, 207 Goodwin Hall. 341f

• ENGINEERING AND ARCHITECTURAL SUPPLIES  
• BLUE LINE PRINTS  
• BLUE PRINTS • PHOTOSTATS  
SCOATES INDUSTRIES  
603 Old Sulphur Springs Road  
BRYAN, TEXAS

## TIRE HEADQUARTERS

B. F. Goodrich & Kelly Springfield  
TIRES • TUBES • BATTERIES

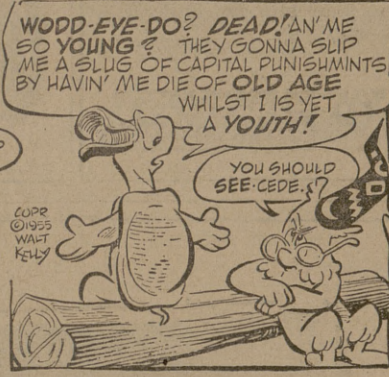
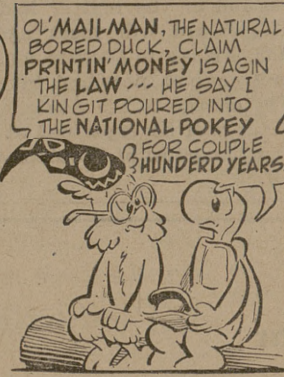
- Factory Method Re-Treading  
Vulcanizing and Repairs
- We Loan You a Tire While We Re-Tread Your Old Tire.
- Complete Stock on Used Tires  
All Sizes (White or Black Wall)

### BRAZOS TIRE SERVICE

2707 Texas Ave.

Ph. 2-1425

### POGO



By Walt Kelly

When the Big Game is done  
And your home-team has won...  
To have the most fun—have a CAMEL!

# —Man, that's pure pleasure!

It's a psychological fact:  
Pleasure helps your disposition.  
If you're a smoker, remember  
—more people get more  
pure pleasure from Camels  
than from any other cigarette!

No other cigarette is so  
rich-tasting, yet so mild!



# Camel

R. J. Reynolds Tobacco Co., Winston-Salem, N. C.

