

Three Services Sunday Lutherans Plan Dedication

Three services are scheduled for Sunday in dedicating the new house of worship for Our Saviour's Lutheran congregation and the A&M Lutheran Student Foundation.

The Service of Dedication will begin at 10 p.m. The Rev. Donald Heiges, Executive Secretary of the Division of Student Service, National Lutheran Council, Chicago, will be the speaker. His subject is "The Role of a Congregation in a College Community."

The Pastor, the Rev. Thomas Swygert, will dedicate the building and its furnishings. The Choir under the direction of Robert Boone will sing "Allelujah" by Mozart. Miss Linda Potts, harpist, will play Malotte's arrangement of "The Lord's Prayer" as special offertory music and Mrs. Major

Friedrick will be organist.

Afternoon services begin at 2:30. Speakers will be the Rev. C. N. Roth, president of the Texas District, American Lutheran Church, Seguin; the Rev. Merton Lundquist, president of the Texas Conference, Augustana Lutheran Church, Austin; and the Rev. Royal Leshre, president of the Texas Synod, United Lutheran Church, Austin.

The Chancel Choir of St. John's Evangelical Lutheran Church, San Antonio, under the direction of Dr. Ralph Ewing will sing "O Holy Father Infinite in Mercy" (Palestrina), "Lord, Increase My Faith" (Ibbons), "Psalm Ninety-Six" (Hassler), "With Grateful Hearts We All Are Met" (Bach), "Seek Ye the Lord" (Roberts), "O Saviour of the World" (Goos), "Psalm

Forty-Two" (Mendelssohn), "Psalm Twenty-Three" (Clokey), "Psalm Eighty-Four" (Brahms), Miss Meta Roehm, is organist for St. John's Evangelical Lutheran Church.

A reception and open house will immediately follow this service.

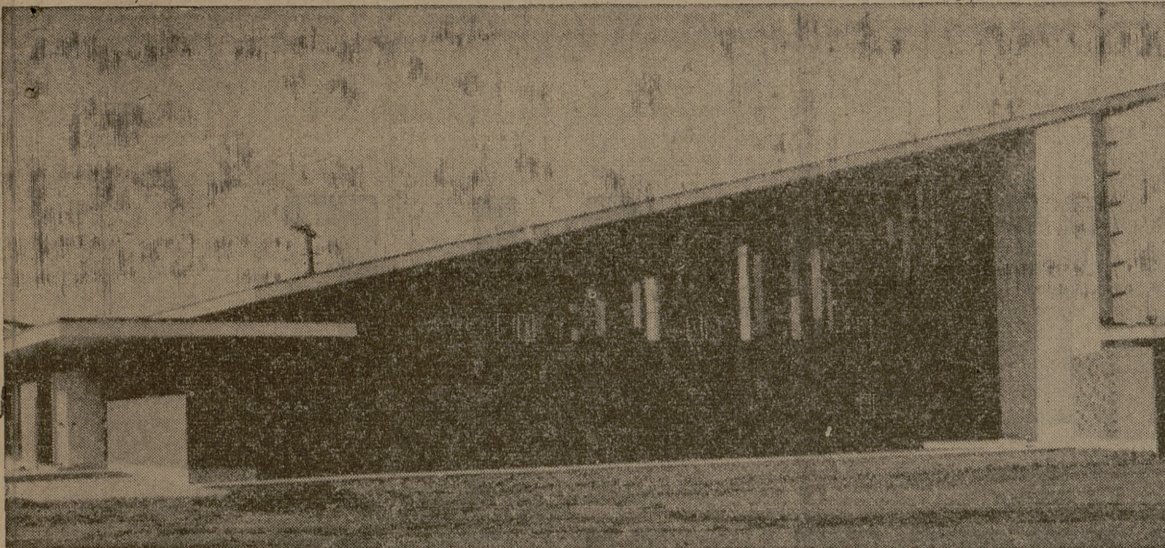
Evening service will begin at 7:30 p.m. The two former Pastors of the congregation, the Rev. Kurt Hartmann, pastor of Immanuel Lutheran Church, Pflugerville, and the Rev. Fred Mgebroff, pastor of Martin Luther Church, Giddings, will conduct the service and deliver the sermon. "Open Doors in the Lord" will be the theme of the Rev. Hartmann's sermon. The Rev. Mgebroff will conduct the liturgical services. The Choir under the direction of Robert Boone will sing "Incline Thine Ear to Me" (Him-

mel), "Dear Lord and Father of Mankind" (Maker), and "Thanks Be to God" (O'Reilly-Dickson). Miss Friedrick will be organist.

Construction on the new church, which is located at Cross and Tauber Streets, began on January 25. The building has a seating capacity of 265.

Architects are Ernest Langford and Frank Lawyer. The R. B. Butler Construction Company of Bryan built the church.

Members who have served on the Building and Finance Committee are Mrs. E. J. Fuchs, Dr. and Mrs. Henry Hadley, L. E. Hearne, Jesse Heine, Theo Hohlt, G. E. Jachne, Burney Mayer, Mrs. Harvey Oakes, Otto Richter, Mrs. Harold Sorensen, L. J. Tolle and the Rev. T. H. Swygert.



DEDICATION PLANNED—The new place of workshop for Our Saviour's Lutheran church will be dedicated Sunday. The Rev. Thomas H. Swygert is pastor.

Churches Set Sunday Rites

College Station churches have announced Sunday sermon topics and meeting times for the coming week.

Faith Evangelical and Reformed Church
Raymond Buck Jr., son of the Rev. R. F. Buck, pastor of the church, will conduct worship services Sunday morning at 10:30. His topic will be "In Spirit and in Truth." He will leave next week for the Eden seminary in Webster Groves, Mo.

Church school Sunday will begin at 9:15 a.m.
A&M Presbyterian Church
"Morals with Margins" is the sermon topic announced by the Rev. Norman Anderson for morning worship services beginning at 11 a.m.

Breakfast for students will be at 9 and church school will begin at 9:45.
The Presbyterian Student League will meet at 6:30 p.m. and evening worship will be at 7:30.

Christian Science Society
Sunday school and worship are at 11 a.m. The subject for the Lesson-Sermon is "Matter," and how we may prove and experience man's God-given dominion over material bondage of all kinds—sin, disease, and limitation—will be brought out.

Church of the Nazarene
Sunday morning worship service will be conducted by the Rev. Har-

old Carlisle, pastor, at 11 a.m. Sunday school is at 10 o'clock.
Evangelistic service is at 7:45 p.m.; the Nazarene Young People's society meets at 7:15 p.m.

Bethel Lutheran Church
"Do You Search for Knowledge?" will be the question asked by the Rev. William C. Petersen in his sermon at the 10:45 a.m. worship service. Sunday school will precede this service at 9:30.

For the Wednesday vesper service at 7:45 p.m. the sermon topic will be "Are You God's Adopted Heir?"

A&M Methodist Church
The Rev. Nolen Vance announced his Sunday morning sermon topic as "Compelling Christlikeness." Worship service will begin at 10:55; Sunday school, at 9:30.

The Methodist Youth fellowship will meet at 6:30 p.m. Sunday. Choir practice is scheduled for Wednesday night at 7:30.

The Wesley Foundation fellowship will be Sunday night at 6:15. Vespers will be held at 7:15 Monday and Friday nights, and the Foundation will meet at 7:15 p.m. Wednesday.

Church of Jesus Christ of Latter Day Saints
Regular Sunday morning services will be held at 10 a.m. at the YMCA chapel.

College Heights Assembly of God
Sunday school will begin at 9:45 Sunday morning, followed at 11 a.m. by the worship service. The Christ Ambassadors will meet at 6:30 Sunday evening.

Weeknight services of the church include a prayer meeting Wednesday night at 7:45 and a meeting of the Women's Missionary council Tuesday at 9:30 a.m. There will be an assembly at Snook Friday at 7:45 p.m.

The church sponsors a radio program at 8 a.m. each Sunday.

Church of Christ
Worship services begin at 10:45 Sunday morning and at 7:15 Sunday night. Sunday school is at 9:45 a.m.

At 7:15 p.m. Wednesday will be prayer meeting. The Ladies' Class meets Thursday morning at 10.

A&M Christian Church
Activities Sunday begin with a coffee hour at 9:15 Sunday morning. Church school is at 9:45 and worship service is at 11.

The Christian Youth fellowship meeting will be at 5 p.m., followed by the meeting of the Disciple Student fellowship at 7:30 p.m.

Choir practice is at 7 p.m. Wednesday, and the Bible Study group meets at 7:15 the same night.

St. Thomas Episcopal Church
Holy Communion will be given at 8 a.m. Sunday and again at the 9:30 service. Morning prayer and sermon will be at 11; church school runs concurrently with the 9:30 service.

The Canterbury association will meet at 7:15 p.m. Wednesday. The service of Holy Communion will be ministered at 6:30 that night.

The annual Bishop's Supper will be Tuesday night at Maggie Parker's Dining Room in Bryan. The speakers are Bishop Clinton S. Quin of Houston, Bishop John E. Hines of Austin, and Bishop Charles A. Boegeli of Port-au-Prince, Haiti.

St. Mary's Catholic Chapel
Sunday masses will be at 8:30 and 10 a.m., and confessions will be at 6:30 a.m. to 7:30 a.m. Saturday and before masses.

Friday morning mass is at 6:45 and the Wednesday evening service is at 7:15.

First Baptist Church
Sunday school classes will meet at 9:40 for local people, and students will meet in the main auditorium of the church at that time for worship service. Worship service will be held at the regularly scheduled time, 10:50 for local people, and Sunday school will be at 10:50 for the students.

Training Union begins at 6:15 p.m. and worship service at 7:15. Wednesday's schedule includes the workers' supper at 6 p.m., teacher's meeting at 6:30 and prayer meeting at 7:15.

Our Saviour's Lutheran Church
Church school and Bible class is at 9:30 a.m., and morning worship is at 10:45.

Wednesday the Lutheran Student Association meets at 7:15 p.m.

The Church... For a Fuller Life... For You...

CALENDAR OF CHURCH SERVICES

A&M CHURCH OF CHRIST 9:45 A.M.—Bible Classes 10:45 A.M.—Morning Worship 7:15 P.M.—Evening Service	ST. THOMAS EPISCOPAL CHURCH 8:00 A.M.—Holy Communion 9:30 A.M.—Church School 9:50 A.M.—Morning Prayer and Sermon 11:00 A.M.—Morning Prayer and Sermon
COLLEGE STATION BAPTIST CHURCH 9:45 A.M.—Sunday School 10:50 A.M.—Morning Worship 7:00 P.M.—Training Union 8:00 P.M.—Evening Worship	A&M CHRISTIAN CHURCH 9:45 A.M.—Church School 11:00 A.M.—Morning Worship
BETHEL LUTHERAN CHURCH (Missouri Synod) 800 S. College Ave. Bryan, Texas 9:30 A.M.—Church School 10:45 A.M.—Morning Worship	OUR SAVIOUR'S LUTHERAN CHURCH 8:00 A.M.—Worship Service 9:15 A.M.—Church Service
COLLEGE HEIGHTS ASSEMBLY OF GOD 9:45 A.M.—Sunday School 11:00 A.M.—Morning Worship 6:30 P.M.—Young People's Service 7:45 A.M.—Evening Worship	A&M PRESBYTERIAN CHURCH 9:45 A.M.—Sunday School 11:00 A.M.—Morning Worship Service 6:30 P.M.—Student League and Fellowship
CHURCH OF THE NAZARENE 10:00 A.M.—Sunday School 6:45 P.M.—Young People's Service 7:30 P.M.—Preaching Service	CHRISTIAN SCIENCE SOCIETY New Building, Cor. Patricia and Boyette 11:00 A.M.—Sunday School and Church
ST. MARY'S CHAPEL 9:00 A.M.—Mass	A&M METHODIST CHURCH 9:45 A.M.—Sunday School 10:55 A.M.—Morning Worship 6:30 P.M.—MYF Meeting
	FAITH EVANGELICAL AND REFORMED CHURCH 9:15 A.M.—Sunday School 10:30 A.M.—Morning Worship

JOHNNY'S HOMEWORK

CAT DOG HE

Will you help Johnny with his homework? Of course! You are willing and eager to help. If Johnny is to be happy and make a real contribution in life, he must have every educational advantage possible. You want to prepare him.

But what about Johnny's church school homework?

To prepare Johnny for life, he must have more than a head full of history and geography and multiplication tables. Johnny must have a heart full of love and a soul dedicated to God. To find purpose and meaning in life, Johnny must have faith, not just fact and figures.

Bring Johnny to Church School and Church every Sunday.

Afterwards, help with his papers and talk over the lessons. Make his church school homework as much your responsibility as his public school homework.

Help Johnny prepare for victorious, Christian living!

THE CHURCH FOR ALL... ALL FOR THE CHURCH

The Church is the greatest factor on earth for the building of character and good citizenship. It is a storehouse of spiritual values. Without a strong Church, neither democracy nor civilization can survive. There are four sound reasons why every person should attend services regularly and support the Church. They are: (1) For his own sake. (2) For his children's sake. (3) For the sake of his community and nation. (4) For the sake of the Church itself, which needs his moral and material support. Plan to go to church regularly and read your Bible daily.

Day	Book	Chapter	Verses
Sunday	Deuteronomy	30	11-14
Monday	Joshua	24	13-16
Tuesday	Ruth	1	15-18
Wednesday	Luke	2	40-52
Thursday	Luke	9	46-50
Friday	Acts	9	1-9
Saturday	1 Corinthians	3	9-17

Baptists Plan Buddy Day, Dual Services

The annual Buddy day barbecue dinner will be given for Aggies at the First Baptist church of College Station after the Sunday morning worship service Sunday morning.

Mrs. R. O. Berry, chairman of the student activities committee, is in charge.

Sunday services have been arranged for the convenience of the students and the local church members. Sunday school classes will meet at 9:40 for local people, and the morning worship service will be held in the main auditorium for the students at that time. Special music will be presented by the Aggie choir of the church.

At 10:50 a.m. the students will attend Sunday school classes and the local people will go to the main auditorium for regular worship services.

The Rev. R. D. Longshore, pastor, has chosen "The Life That Counts" for the sermon topic for both services.

WHAT OUR DRY CLEANING DOES FOR YOU

Save Your Money!
Save Your Clothes!

CAMPUS CLEANERS

For NEWS and SPORTS
Read Your Morning Newspaper

THE HOUSTON POST

Dormitory Delivery
F. L. SMITH
1204 S. Hiway 6 2-5180 or 4-9756

The Oaks Nursery School

College Station, Texas

Limited Enrollment

Qualified Teachers — Degree in Education

Large Shaded Play Area

— HOURS —
9 a.m. to 12 noon — 9 a.m. to 5 p.m.

For Appointment — Phone 4-8179

City National Bank

Member
Federal Deposit
Insurance Corporation

BRYAN

Bryan Building & Loan Association

BRYAN

The Exchange Store

"Serving Texas Aggies"

Bryan Communities Since 1909

First State Bank & Trust Co.

Member Federal Deposit
Insurance Corporation

BRYAN

LAUNDROMAT

HALF-HOUR LAUNDRY & CLEANERS

One Block East of College View Apts.
COLLEGE STATION

Sanitary
FARM DAIRIES

MILLER'S
Hardware

PHONE 4-1145

Lilly

Lilly Ice Cream Co. Bryan

MELLO CREAM
"A Nutritious Food"