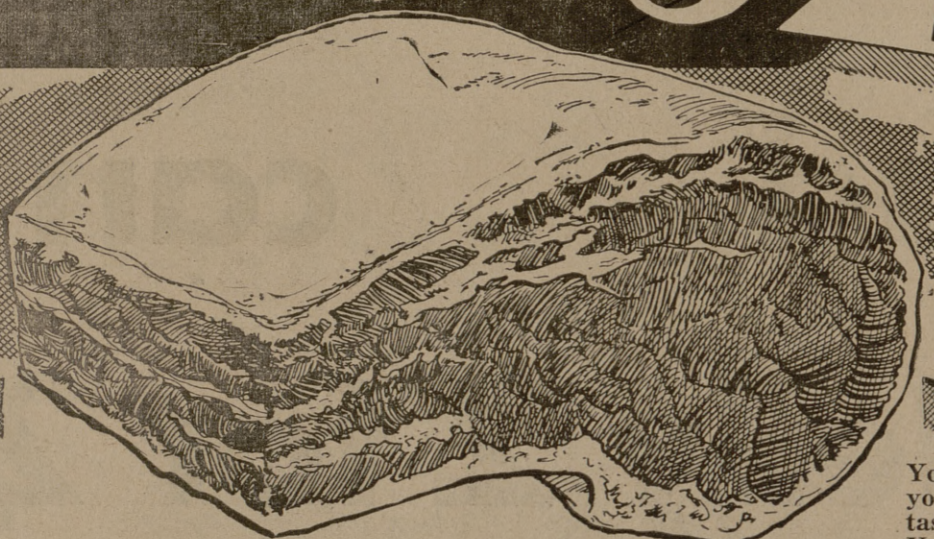


OUR MEATS GIVE YOU ALL 3 QUALITY CUT ECONOMY



CLOSED—MONDAY, SEPT. 6TH. LABOR DAY

RIB

Stew Meat Lb. 25c

SHOULDER

Roast CHOICE VEAL POUND — 27c

Loin Steak VEAL POUND— 49c

JUMBO BOLOGNA Sliced Pound 35c

SALT BACON Pound 39c

HAMBURGER Ground Fresh POUND— 27c (3 lb. pkg 77c)

You want top grade quality that assures you of tenderness, juicy goodness, and taste-thrilling flavor in the meats you buy. You want your meat cut to give you full value for your money—with excess bone and fat trimmed off before weighing. You want the economy of every day low prices to enable you to serve more meat more often. You want Quality . . . Cut . . . Economy — and you get ALL THREE when you buy your meats at ORR'S SUPER MARKET.

RATH'S SUNVALE

Bacon Lb. 55c

SPECIAL PRICES THURSDAY P.M.— FRIDAY — SATURDAY — SEPT. 2 - 3 - 4

FOLGER'S or MARYLAND CLUB

Coffee Pound Can 99c

— STORE HOURS EFFECTIVE SEPTEMBER 6 —

RIDGECREST 3506 Hy. 6—So. Mon., Tues., Wed., Thur.—7a.m.—8p.m. Friday — Saturday — 7a.m.—9p.m.

FOOD CENTER 200 E. 24th Mon., Tues., Wed. — 7a.m.—7p.m. Thursday, Friday, Sat. — 7a.m.—8p.m.

- MELLORINE or SHERBET 1/2 Gallon 49c
- PINTO BEANS 2 Pound Package 19c
- GOLDEN AGE All Flavors Beverage 6 Cans 59c
- AMERICAN SARDINES 3 Cans 25c
- SOUR or DILL PICKLES Red River Quart 23c
- TUNA Star Kist Chunk Can 29c

Frozen Foods

- SUNKIST LEMONADE 2 6 Oz. Cans 33c
- BIRDSEYE CUT CORN 2 10 Oz. Cans 33c
- BIRDSEYE—GREEN PEAS 2 10 Oz. Pkgs. 33c
- BIRDSEYE—MIXED VEGETABLES 2 12 Oz. Pkgs. 33c
- MORTON'S CHICKEN POT PIES 2 for 49c

U.S. NO. 1—SELECTED LONG WHITE



POTATOES

10 lbs. **25c**

CRISP CALIFORNIA PASCAL

CELERY

Nice Size Stalk **9c**



TOMATOES

U.S. NO. 1—SELECTED



CARTON **9c**

- Del Monte Sale —
- CORN GoZlen 2 303 Cans 29c
 - CATSUP Tomato 2 14 Oz. Bott. 33c
 - SPINACH California 2 303 Cans 25c
 - BEANS Cut 2 303 Cans 45c
 - PINEAPPLE JUICE 2 46 Oz. Cans 49c

BACK TO SCHOOL SUPPLIES

FREE: One pint of LILLY MELLORINE or SHERBET with the purchase of \$1.00 or more in school supplies.

WE CARRY A COMPLETE LINE OF SCHOOL SUPPLIES:

- Notebook
- Loose Leaf Fillers 25c Size 19c
- CRAYOLAS 15c Size 13c
- Spiral Books
- COMPOSITION 25c Size 19c

—TWO CONVENIENT LOCATIONS—

Super **ORR'S** Markets

— Best in Bryan —

200 E. 24th St. — 3506 Texas Ave.