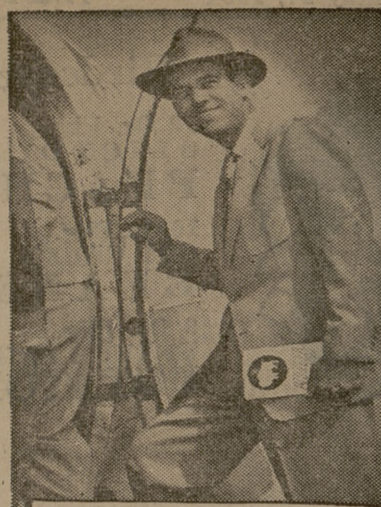


This week...
329* people
who never flew
before make their
FIRST FLIGHT
on
PIONEER
AIR LINES!

Wouldn't YOU like
to fly PIONEER and

- avoid monotonous, dangerous highway travel—get there three times faster
- ride in clean, pleasant comfort
- solve the problem of traveling with children
- save travel money with Pioneer's family fare plan—or 10% on your return trip with a round trip ticket
- Costs Only Pennies Per Mile—Worth Every Cent of It!



Flights timed to go where you want to go to	
DALLAS	97 minutes Lv 7:05 am, 2:15 am
HOUSTON	42 minutes Lv 3:31 pm, 8:36 pm
SANTA FE	6 hrs. 35 mins. Lv. 7:05 am, 2:15 pm

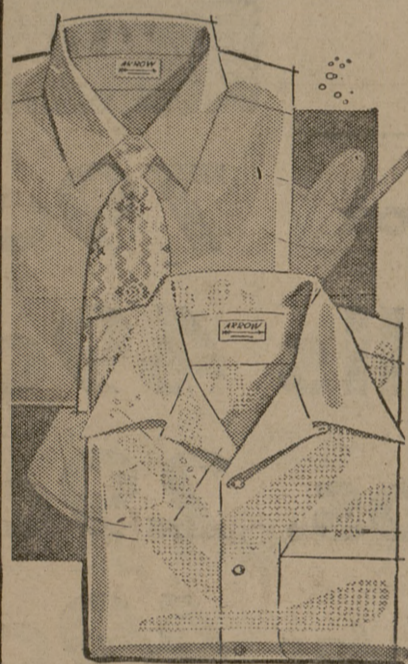
Find out all these advantages for yourself...for information
CALL 4-5054

PIONEER
AIR LINES
SERVING 24 KEY CITIES OF THE SOUTHWEST

FOR ARROW UNIVERSITY STYLES

Real cool, man!

Arrow Lightweight
Shirts and Sports Shirts



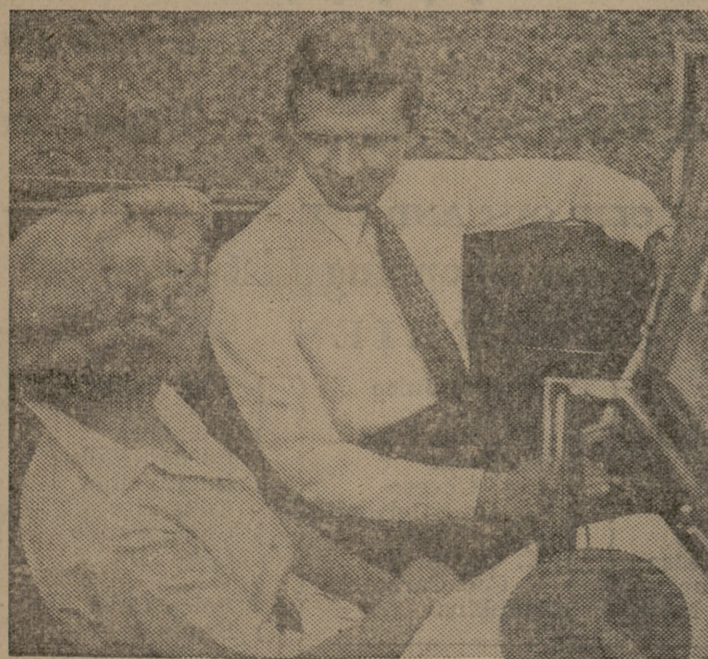
Come on in. Look at these shirts... examine the fabrics closely. And you'll see why these handsome lightweights... woven of airy, open-weave fabrics... keep you cool as a cucumber even when the mercury soars sky-high. Choose Arrow lightweight shirts for dress wear... lightweight sports shirts for leisure wear... in white and smart pastels. All tailored of fine "Sanforized"® fabrics that won't shrink more than 1%. Stop in, see them today.

Arrow Lightweight Shirts...
Arrow Lightweight Sports Shirts... \$3.95 up

W. S. D.
Clothiers

Located in Bryan

Cool Summer Forecast For Men
Wearing Arrow Lightweights



Judging from the current rush on for Arrow lightweights, it appears that the student body is headed for a cool and comfortable summer. Arrow lightweight shirts and sports shirts... in white and popular colors... are now available at all Arrow dealers.

ARROW
TRADE MARK

SHIRTS • TIES • UNDERWEAR • HANDKERCHIEFS • SPORTSWEAR

**Social Club
Sets Year's
Program**

Mrs. L. S. O'Bannon, new president of the Foods group of the A&M Social club, and Mrs. E. B. Reynolds, new program chairman, led the club in a discussion of programs for the next year at its meeting Friday.

The group decided on a theme of "menus from famous inns." Mrs. C. F. Richardson, retiring president, led a business session, and Mrs. G. L. Huebner, secretary-treasurer, read her report.

After the luncheon, which featured salads, Mrs. Huebner gave an account of the origin and history of salads. Mrs. John S. McCannon was hostess for the luncheon. Greeting members at the door, she gave each member a place card in the form of a May basket, directing them to one of the six tables, each set for 10 persons.

Each of the tables was centered with a Maypole arrangement. Many-colored streamers from the poles were anchored away from the base of the pole by tiny corsages of spring flowers.

Luncheon was served from a buffet table overlaid with a white banquet cloth. The buffet table also had a Maypole decoration in the center, with six small dolls around the base, each holding a streamer.

The committee in charge of the luncheon was Mrs. Huebner and Mrs. T. R. Holleman, co-chairmen, and Mesdames H. T. Blackhurst, William Kammlade, W. J. Morris, Frank Lawyer, C. M. Taylor, J. S. McCannon.

**Shelton Elected
President of AIE**

Huntley Shelton was elected president of the American Institute of Industrial Engineers recently.

Other officers elected were Bob Holmes, vice president; Robert Beaver, secretary; Gerald Leighton, treasurer; Gayle Ros, Battalion representative; and Bob Bacher, reporter to Engineer.

BEYOND BELIEF

DETROIT—(AP)—The first time the man came into court charged with stealing canned goods from a hospital where he worked, he explained:

"I found out someone else had stolen the stuff and I was just returning it."

Recorder's Judge Joseph Gillis cocked a quizzical eye, but found him innocent.

Two weeks later the man was back before the judge, with this explanation of 14 one-pound bags of coffee found by a hospital guard who noticed a suspicious bulge under the defendant's coat:

"I knew someone else was planning to steal this coffee, so I just decided to take it first."

The man got 90 days in jail.

Announcing

Tennis, Baseball, Golf, and Fishing Equipment; Picnic Supplies; Knife Sets; Pottery Sets; Bicycles; Fountain Pens; Radios; Electrical

**Extraordinary Meats
At Ordinary Prices**

- Choice Baby Beef—SIRLOIN
- STEAK . . . lb. 69c**
- Whole in Cello. Bag—Heart o' Texas
- FRYERS . . lb. 49c**
- EXTRA SPECIAL. Skinless, Lean, Pre-Cooked (Shank Off)
- HORMEL PICNIC . . . lb. 59c**

- Hormel All-Meat
- FRANKS lb. 49c**
- From Choice Baby Beef
- POT ROAST lb. 45c**
- Lean Brisket
- STEW MEAT lb. 25c**
- Hormel Midwest
- BACON lb. 69c**
- Armour's Mild
- HOOP CHEESE . . . lb. 55c**

- Hormel—All-Meat (Also PRESSED HAM)
- BOLOGNA lb. 49c**
- Freshly Ground (3 POUNDS \$1.00)
- GROUND MEAT lb. 35c**

FROZEN FOODS

- 6 Varieties—Morton's Fruit and
- Pot Pies—choice . 3 for 77c**
- 6 Oz. Cans—Snowcap
- ORANGE JUICE . . . 2 cans 35c**
- ½ Gal. Holiday
- MELLORINE . . . each 49c**
- Snowcap
- STRAWBERRIES . . . pkg. 29c**
- Stokely's Honor Brand—CHOPPED
- BROCCOLI 2 pkgs. 37c**
- Stokely's—Honor Brand
- GREEN PEAS . . . 2 pkgs. 37c**

Fresh Fruits and Vegetables

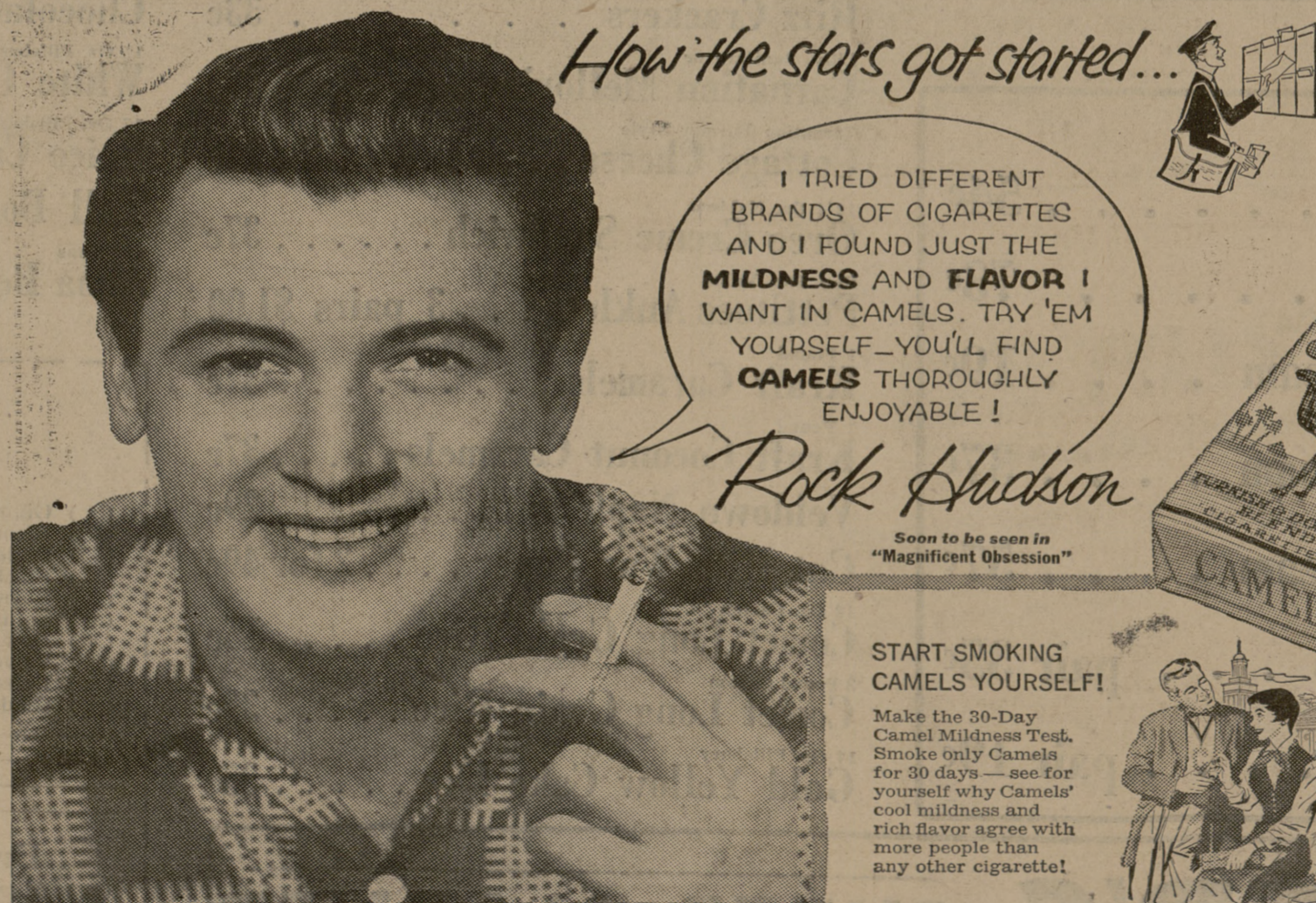
- Each Spring we look forward to the arrival of Fresh local Hort. Farm Vegetables, Fruits, and Berries. Their delicious tomatoes and plums are now in, and corn is expected next week.
- FRESH—HORT. FARM Tender Young—YELLOW
 - Tomatoes . . lb. 29c** Squash lb. 5c
 - FRESH BRUCE—HORT. FARM Fresh Firm
 - Plums pint 25c** Cucumbers . . lb. 5c
 - GALLON — 85c
 - 432 Size Sunkist Local, Tender
 - LEMONS doz. 29c** GREEN BEANS . . 2 lbs. 19c

GROCERY SPECIALS

- (Limit One, Please)—1 Lb. Can—FOLGER'S Mrs. Tucker's Can 3 LB. CAN
- COFFEE . . \$1.15** Shortening . . . 69c
- 10 LB. BAG—(Limit 1, Please)
- SUGAR 89c** Hormel
- ½ Gal. Sanitary—Bottles—PASTEURIZED **OLEO . . . 2 lbs. 39c**
- MILK 2 for 75c
- Popular Brands Carton
- CIGARETTES . . . \$2.09** — PATIO BRAND SALE —
- No. 2 Cans CAN
- 303 Cans CAN
- Beef Enchiladas . . . 43c** Chicken Enchiladas . 43c
- 16 Oz. Cans CAN
- Hormel **Barbecue Beef 55c**
- 5 Lb. Bag—Rafter B
- Charcoal each 29c**
- 1000 Single Sheets, High Quality—Softex
- 46 Oz. Cans Libby's
- Toilet Tissue . . . roll 10c** Tomato Juice . . . can 25c
- Now On Sale. June Issue COPY 14 Oz. Bottles Heinz
- Better Living Mag. . . 5c** Catsup each 24c

Southside Food Market

WE RESERVE THE RIGHT TO LIMIT QUANTITIES
STORE HOURS: 8 a.m. — 7 p.m. Daily Open 30 Minutes Earlier Fri. & Sat. —
3 Blocks Due South of Kyle Field, College Closed Sun. A Complete One-stop Market
Specials Starting 4 p.m. Thur. thru Sat. — May 27 - 28 - 29



How the stars got started...

I TRIED DIFFERENT BRANDS OF CIGARETTES AND I FOUND JUST THE MILDNESS AND FLAVOR I WANT IN CAMELS. TRY 'EM YOURSELF... YOU'LL FIND CAMELS THOROUGHLY ENJOYABLE!

Rock Hudson

Soon to be seen in "Magnificent Obsession"

ROCK HUDSON says, "After acting in high-school plays, I got a job in Hollywood delivering mail so I could talk to stars and agents. The plan worked — one agent arranged a screen test. I worked five months without a day off — and it paid off with a good starting contract!"



R. J. Reynolds Tobacco Co. Winston-Salem, N. C.

START SMOKING CAMELS YOURSELF!

Make the 30-Day Camel Mildness Test. Smoke only Camels for 30 days — see for yourself why Camels' cool mildness and rich flavor agree with more people than any other cigarette!



CAMELS LEAD in sales by record

50⁸/₁₀

Newest nationwide figures* from the leading industry analyst, Harry M. Wootton, show Camels now 50 8/10% ahead of the second-place brand — biggest preference lead in history!

*Published in Printers' Ink, 1954

for Mildness and Flavor **CAMELS AGREE WITH MORE PEOPLE** THAN ANY OTHER CIGARETTE!