



**SPRING BANQUET HONOREES**—These athletes were all recipients of awards Tuesday night at the annual spring sports banquet sponsored by the Brazos County A&M club. Back row, (l. to r.) James Addison, Don Horne, Roy Martin, Bobby Gross, Dale DeRouen, Charles Leissner, Joe Hardgrove, Jimmy Williams. Front row, Arthur Garner, Gayle Klipple, Bob Zarbock.

## 'MURAL TRACK PROGRAM

5 P.M. — KYLE FIELD

Upperclass Freshman

**440 YD. DASH**  
 Lyles, Sqd. 11; Markey, A FA; Condit, Sqd. 4; Ritchie, A.A.A.; Adams, B Inf; Magnon, Sqd. 10; Sinclair, Sqd. 16; Hall, B Ath; Lopez, A.A.A.; Goddard, A FA; Akin, Sqd. 7; Patterson, Sqd. 11; Popejoy, Sqd. 20; Thornton, Co. F; Trucks, Sqd. 22; Orfield, Co. F; Gomey, Co. C; Jones, Sqd. 21; Hogan, Co. G; Pence, Sqd. 20; Ramirez, Co. B.

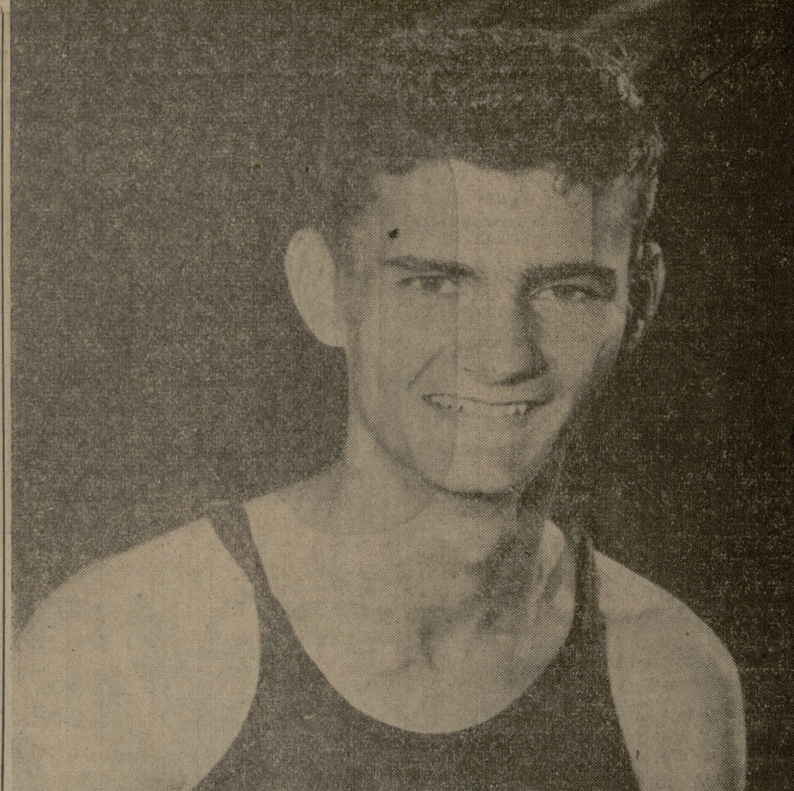
**880 YD. DASH**  
 M Band; Sqd. 11; A Inf; B Inf; Sqd. 7; Sqd. 1; Sqd. 22; Co. B; Co. L; Co. F; Co. C; Co. H.

**880 YD. RUN**  
 Goddard, AFA; Linsessen, B Inf; Hipp, Sqd. 14; Goldstone, A Cml; Slabheart, B Inf; Condit, Sqd. 14; Crandall, A Ord; Richards, A Ord; Waddell, Sqd. 7; Laak, A Ord; Gleason, A.A.A.; Harrison, Co. A; Chispek, Co. B; Cross, Sqd. 15; Hogan, Co. G; Sheppard, Co. C; Jones, Sqd. 21; Morton, Sqd. 20; Orfield, Co. F; Robins, Co. B.

**100 YD. DASH**  
 Wise, B Inf; Merritt, Sqd. 11; Netterville, Dorn. 2; Martin, A Engr; Renken, Sqd. 9; Hart, A Cml; Layton, Sqd. 16; Salmon, Mitchell; Steinmann, A Arm; Bond, A.A.A.; Campbell, Co. C; Duke, Co. F; Holt, Co. A; Pyland, Sqd. 22; Perkins, Co. E; Nezat, Co. H; Betsell, Co. F; Van Holsen, Co. G.

**120 YD. HURDLES**  
 Petty, B Ath; Godfrey, Sqd. 5; Wycoff, Mitchell; West, B Inf; Carpenter, Sqd. 16; Thomas, ASA; Seaf, Co. A; Moeller, Co. E; Carlisle, Co. E; King, Co. L; Thomas, Sqd. 21; Kelly, Co. F; Emerson, Co. F.

**440 YD RELAY**  
 M Band; Sqd. 11; A Inf; B Inf; Sqd. 7; Sqd. 1; Sqd. 22; Co. B; Co. L; Co. F; Co. C; Co. H.



**HEADED CINDERMEN** — Dale DeRouen, top-notch Aggie distance man who was hampered by an old ankle injury this spring, led the 1954 track team to a second place in conference standings. Dale injured his ankle last fall during the cross-country season. He is a graduating senior.

## 'MURAL HIGHLIGHTS

Intramural track finals will begin this afternoon at 5:10 on Kyle field. Outstanding track and field performances are expected from these intramural Aggie tracksters, said Barney Welch, intramural director. Preliminaries in the 100 yard dash, hurdles and pole vault were run yesterday. Men qualifying for finals were as follows:  
**100 Yard Dash**—Class A—Wise, B Inf; Merritt, Sqd 11; Hart, A Chem; Leighton, Sqd 16; Neterville, Dorm 2; Martin, A Engr; Renken, Sqd 9; Bond, A.A.A.; Salton, Mitchell; Steinman, A Arm. Class C—Campbell, Co C; Duke,

Co F; Holt, Co A; Pyland, Sqd 22; Perkins, Co E; Nezat, Co H; Betsell, Co F; Van Holsen, Co G.  
**120 Yard Hurdles**—Class A—Petty, B Ath; Godfrey, Sqd 5; Wycoff, Mitchell; West, B Inf; Carpenter, Sqd 16; Thomas, ASA.  
**Class C**—Seaf, Co A; Moeller, Co I; Carlisle, Co E; King, Co L; Kelly, Co F; Thomas, Sqd 21; Emerson, Co F.  
**Pole Vault**—McDade, Page, Cummings, Mitchell and Carpenter.

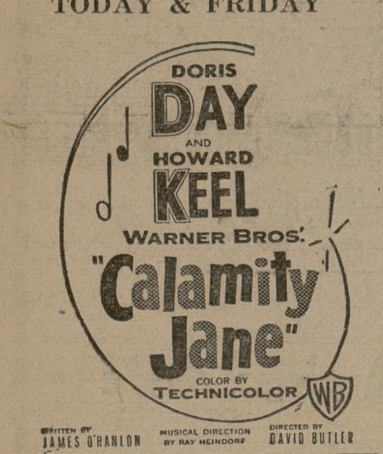
## Texas League '53 Attendance Lower

FORT WORTH, May 19—(AP)—Attendance at Texas league baseball games is 27 per cent behind last year, the league said today. Official figures for 143 games through May 16 show average attendance is 1,660, compared to 2,284 last year. Fort Worth is the only club showing a per-game increase, largely the result of an opening-game crowd of 12,000. Fort Worth, which has played more games this year than the other clubs also leads in total attendance with 40,013 admissions.  
**Lubbock Center Signs A&M Letter of Intent**  
 LUBBOCK, May 20—(AP)—Jackie Williamson, 200-pound center from Lubbock, said today he has signed a letter of intent with Texas A&M.

## UT, Okla Aggies Playoff For NCAA

AUSTIN, May 20—(AP)—Texas and Oklahoma A&M will meet in an NCAA district baseball playoff for the second time in six years, and Texas again will hold the home field advantage. The Longhorns, who whipped the Aggies in 1949 and went on to win the national title, gained the right to be host for the best two-of-three series on a flip of the coin. The first game will be played here May 31.

## Guion Hall TODAY & FRIDAY



## PREMIUMS

**FRESH FRUITS AND VEGETABLES**  
**FRESH PINEAPPLE** - 3½ to 4 Pound Each . . . . . lb. 9c  
 Fresh, Snappy GREEN . . . . . Fresh, Tender, Young YELLOW  
**Beans 2 lbs. 19c** **Squash lb. 7c**  
 Fresh 432 Size Calif. Sunkist  
**Cucumbers lb. 7c** **Lemons doz. 29c**  
 Eating or Jelly Making. The Local Hort. Farm's Bruce Variety  
**FRESH PLUMS** . . . . . Gallon 89c  
 . . . . . Quarts 25c

Trade Your Books for Records!  
 Trade Your Books for Records!  
**RECORD SALE**  
 Entire Stock  
 of  
 45 and 33 1/3 R.P.M. Reduced  
 POPULAR AND CLASSICAL  
**20% off**  
 Remember!!  
 You can TRADE your  
**TEXTBOOKS for RECORDS**  
 and take advantage of this wonderful  
 opportunity to increase your record  
 library.  
 You Don't Need Cash  
 Bring Your Books  
**SHAFFER'S BOOK STORE**  
 North Gate

**MEATS**  
**EXTRAORDINARY MEATS AT ORDINARY PRICES**  
 Armour's Star—Heavy Beef POT  
**Roast lb. 43c**  
 Choice Baby Beef—Best Cuts  
**Sirloin Steak . . . . . lb. 69c**  
 Fresh Ground  
**Ground Meat . . . . . lb. 35c**  
 3 POUNDS \$1.00  
 Armour's Star Heavy Beef  
**Club Steaks . . . . . lb. 65c**  
 Choice Baby Beef  
**Rump Roast . . . . . lb. 65c**  
 Any Flavor—Borden's—5 Oz. Jars  
**Cheese Spreads . . . ea. 25c**  
 Hear o' Texas—Whole in Cello. Bag  
**Fryers lb. 49c**  
 Hormel Midwest  
**Bacon lb. 69c**  
 Hormel All-Meat  
**Franks . . . . . lb. 49c**  
 Hormel Pre-Cooked—Shank End  
**Ham . . . . . lb. 59c**

**GROCERIES**  
 One—1-Pound Can FREE With Each 3 Lb. Can MRS. TUCKER'S  
**SHORTENING** . . . . . Total, 4 lbs. 85c  
 The Large Size—10¼ Oz. Nabisco SWISS CREME Popular Brands—(Others Proportionately)  
**Sandwich Cookies . . . 35c** **Cigarettes . . . carton \$2.09**  
 Limit Two Please—CDM  
**Coffee lb. \$1.09** 1000 Double Sheets—White or Colored—DELSEY  
**Toilet Tissue . . 2 rolls 25c**  
 A Refreshing Summer Drink  
**Koolaid . . 6 pkgs. 25c** No. 300 Cans—Van Camp's  
**Pork & Beans . . 2 cans 25c**  
 2 Pound Jar Kimbell's  
**Apple Jelly . . jar 35c** 303 Cans—Rosedale  
**Green Peas . . . 2 cans 27c**  
 14 Oz. Bottles Hunt's  
**Catsup each 15c** Packed in Holland—Tall Cans  
**Mackerel . . . can 23c**  
 60c Value. A Pkg. of GLADIOLA PIE CRUST  
 MIX FREE with GLADIOLA DEVILS FOOD  
**Cake Mix . . . both for 39c** Sunshine Krispy  
**Crackers . . . 1 lb. box 25c**  
 Hormel  
**Oleo 2 lbs. 35c** Grade A Sanitary Pasteurized—Half Gallons  
**Milk . . . . . 2 for 75c**  
 Kimbell's Best  
**Flour 5 lb. bag 43c** (Plus Bottle Deposits.)  
 Carton of 6 Bottles—(Plus Deposit)  
**7-Up . . . . . ea. 25c**

**Southside Food Market**  
 WE RESERVE THE RIGHT TO LIMIT QUANTITIES  
 STORE HOURS: 8 a.m. — 7 p.m. Daily Open 30 Minutes Earlier Fri. & Sat. — Closed  
 3 Blocks Due South of Kyle Field, College Sundays. A Complete One-stop Market  
**SPECIALS STARTING 4 P.M. THUR. thru SAT — MAY 20 - 21 - 22**

**DYERS-FUR STORAGE HATTERS**  
**American**  
 DIAL LAUNDRY CLEANERS  
 2-1585  
 210 S. Main Bryan Pho. 2-1584

**FROZEN FOODS**  
 6 Oz. Cans—Snowcrop ORANGE  
**Juice 2 cans 35c**  
 Snowcrop  
**Strawberries . pkg. 27c**  
 ½ Gal. Holiday  
**Mellorine ea. 45c**  
 Subject to stock until Friday noon. Peach—  
 Apple — Cherry pie-for-two — Beef — Tur-  
 key — Chicken Individual—(Choice)  
**Pot Pies . . . 3 for 73c**  
 Birdsege  
**GREEN PEAS 2 pkgs. 39c**  
**SPINACH**