

Texas Lutheran Drubs Ags 4-2

Cadets' Six Errors Cost Them Decision

Based on AP Reports
 SEGUIN—The Aggies bobbed their way to their ninth loss of the season yesterday in their seventeenth game, a 4-2 drubbing by Texas Lutheran.

Two Aggie pitchers, Jerry Nelson and Joe Hardgrove, pitched four hit balls between them, but errors on the part of their teammates accounted for four runs for Texas Lutheran to give the Seguin team a four-run advantage in the fourth inning.

The Cadets scored a single run in the fifth frame and another in the eighth for their only tallies.

In their big fourth inning push, the Texas Lutheran squad got only one hit, but parleyed four errors and a hit batsmen into the winning runs.

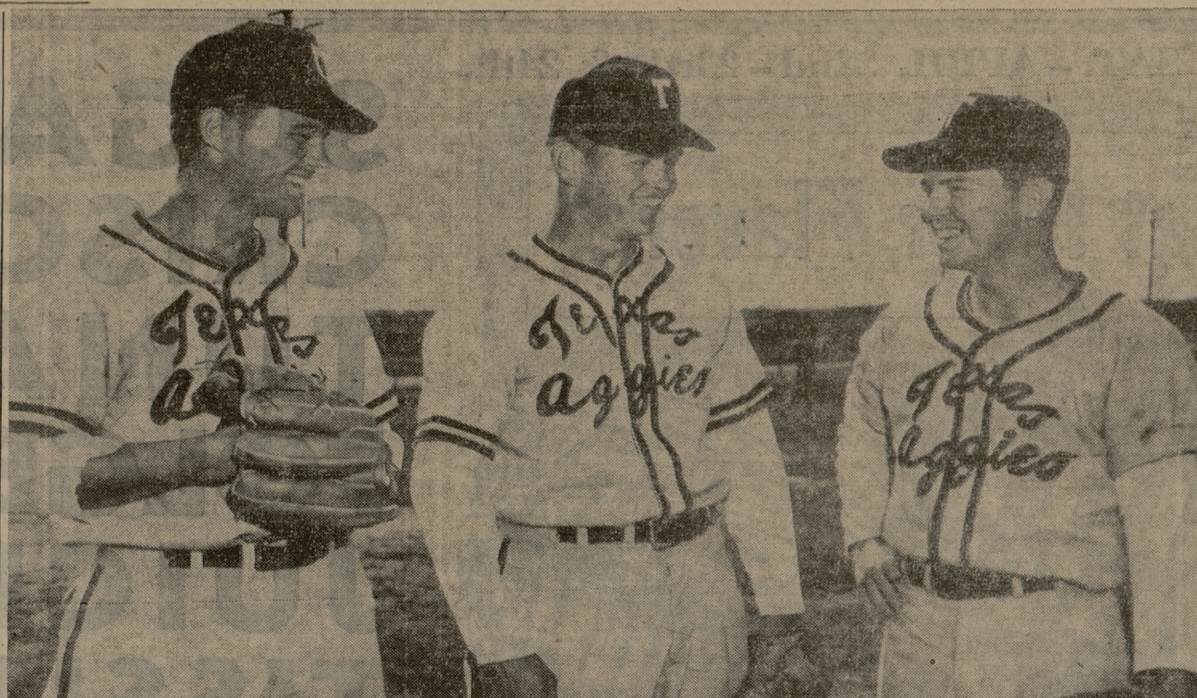
Pete Correa of the winners went the route and was the winning hurler. Nelson was the losing pitcher. He was replaced by Hardgrove in the fifth inning.

The Aggies' next game will be

Friday afternoon in Fort Worth against the TCU Horned Frogs. The Aggies are in second place and lead SMU by 1½ games in Southwest conference play. The Ponies lost to Baylor yesterday 3-2 in a pitchers' duel between Tommy Bowers of the Mustangs and Fred Gottlieb of the Bruins.

A&M sports a 4-3 record in the conference, winning games from Rice (2), SMU and Baylor. They have lost to Texas, Baylor and SMU.

A&M000 010 010—2 7 6
 Lutheran000 400 00x—4 4 2
 Jerry Nelson, Joe Hardgrove (5)
 and Jim Williams; Pete Correa and Wayne Carter.



TALK OVER COMING GAME—These three Aggie baseball players, (from l. to r.) Behn Hubbard, Les Byrd and John Stockton, talk over the coming match with TCU which the Cadet diamond squad faces Saturday in Fort Worth. Hubbard is hitting .227 in Southwest conference play for the Cadets and is fourth on the team in that category. Byrd is starting first baseman and Stockton is starting centerfielder for Coach Beau Bell's team.

Fish Ball Squad To Play Blinn Here

With Florida slugger Dick Bleckner leading the way, the Aggie freshman baseball squad will compete with Blinn junior college Saturday afternoon at 2 p.m. on Kyle field.

Little (5-8) Bleckner leads the freshmen in hitting with a .409 average through their first eight games. He has gotten on base a total of 13 times in six games. He has scored 8 runs, knocked 2 home runs, stolen 6 bases, walked 3 times and struck out only twice. Bleckner is from West Palm Beach, Fla.

Hot hitting for the team is .226, compared to .198 for their opponents. Leading hurlers for the Fish are Doug Mullins of Wichita Falls, who has won two, lost none and who has 13 walks and 6 strikeouts to his credit. He has faced only 52 batters however.

In his three completed games, pitcher Dick Munday, former Stephen F. Austin (Bryan) high school pitcher, has hurled 27 strikeouts, walked 18, has a 1.0 earned run average, pitched 35½ innings and pitched to 147 batters.

Another standout player on the

freshman squad is right fielder Charley Blood, who is also an outstanding basketball player according to Coach John Floyd. Blood is a former all-state cager. He hails from Ponca City, Okla. Blood has eight runs-batted-in to his credit and is fourth in team batting with a .280.

John Hoyle, another Oklahoman, he comes from Tulsa, covers the first base area for the Fish. Hoyle is hitting .391 to take second place honors in batting for the team. He has three RBIs.

Billy Ray White, El Paso third baseman for the Fish, is hitting .294. He has four RBIs to his credit and has walked eight times. He is third in hitting for the Fish.

The first time out against Blinn earlier in the season, the Fish blanked the Brenham junior college 8-0. They'll be out for another win Saturday.

A&M Cowhands Compete In Hardin-Simmons Rodeo

Based on AP Reports

A&M's rodeo team will join more than 100 other top collegiate cowhands in the eighth annual Hardin-Simmons University rodeo, today and Friday in Abilene.

The sixteen teams entered in the competition represent schools from five southwestern states. The colleges entered are: Texas Tech, Oklahoma university, Oklahoma

A&M, Sam Houston state college, Sul Ross, Hardin-Simmons, Ranger junior college, Texas A&M, Texas Christian, New Mexico A&M, Abilene Christian college, University of New Mexico, Baylor, Tarleton junior college, Colorado A&M and University of Arizona.

The Hardin-Simmons team is the defending national champion. Points made in the rodeo there will count toward the national title.

Games of The Week

April 23—Varsity Tennis at SMU.
 April 24—Fish Baseball here vs. Blinn.
 Varsity Baseball at TCU.
 Track at Drake Relays.
 Golf here vs. Arkansas.
 Tennis at TCU.

Guion Hall

TODAY and FRIDAY
 BROADWAY'S BIG HIT
 BECOMES A GREAT
 M-G-M MUSICAL
 IN COLOR!



PALACE

Bryan 2-8879
 STARTS TODAY



QUEEN

NOW SHOWING
 Jeannie Crain
 in
 "Dangerous Crossing"

FISH HITTING

Player	G	AB	R	H	RBI	Avg.
Avanti, c	1	0	0	0	0	1.000
Bleckner, ss	8	22	8	9	4	.409
Hoyle, 1b	8	23	4	9	3	.391
Fraga, p-2b	8	1	0	0	0	.375
Sullivan, p	2	3	0	1	0	.375
White, 3b	7	17	2	5	4	.294
Ross, 2b	4	7	2	2	1	.286
Blood, rf	6	25	1	7	8	.280
Gattis, c	8	20	2	5	3	.250
Wade, ss-3b	5	13	1	3	2	.231
Wilson, 2b	7	24	4	5	4	.208
Andrews, 3b	2	6	1	1	2	.167
Mullins, p	3	7	1	1	1	.143
Munday, p	3	7	1	1	1	.143
O'Connell, p	3	7	1	1	1	.143
Holiday, rf-c	8	22	5	2	1	.091
Bushnell, r-3-lb	7	25	3	2	2	.080
Pyland, cw	2	5	2	0	0	.000
West, c	2	5	0	0	0	.000
McDonald, rf	1	1	0	0	0	.000
Finch, cf	1	1	0	0	0	.000
A&M Totals	8	265	45	60	38	.226
Opp. Totals	8	252	32	50	25	.198

Season Record: 5-3
 Fish 5, Lamar high school....2
 Fish 8, Blinn College.....0
 Fish 6, Rice Owlets.....11
 Fish 7, Bryan high school....2
 Fish 7, Reagan high school....5
 Fish 10, John Tarleton.....4
 Fish 0, Baylor Cubs.....5
 Fish 2, Texas Shortorns.....3

Razorback Golfers Play Here Saturday

The Aggie links team will meet Arkansas here Saturday at 2 p.m. David Vandervoort will be in the number one spot for the Cadets. Homer Calloway will be in the second spot with Wick Vennard number three and John Van Wert in the fourth position.

The Cadets will be without the services of star Bill Franklin, who underwent an operation over the holiday and will be out for the remainder of the season.

Mexican Dishes SPECIALS

Join Us On These Specials...
 THURSDAY thru SUNDAY

FREE CRISPY TOSTADITAS
 WITH EACH ORDER

ONLY
 35c

CHAPULTEPEC

MEXICAN DINNER
 COMPLETE WITH—
 Enchiladas.....(3)
 Beef Tacos.....(3)
 Beef Enchiladas..(3)
 Tostadas.....(3)
 Chile Con Queso..(3)
 Tamales - Chile..(3)
 Guacamole - Salad...

PREMIUMS

Save all our cash-register receipts. In lots of \$50 or more, we will redeem them from you for highly desirable premiums—high grade greeting cards, picnic boxes and many other items. You will like the selections and values. Tuesday's GREEN receipts and receipts with RED STARS on them will count double. Start saving them today.

EXTRAORDINARY MEATS AT ORDINARY PRICES

Choice Baby Beef	Choice Baby Beef	VC Skinless
Club Steaks . . . lb. 63c	Seven Steaks . . lb. 55c	Wiener's . . . lb. 39c
Choice Baby Beef	Choice Lean Brisket	Armour's Mild
Loin Steak . . . lb. 77c	Stew Meat . . lb. 25c	Hoop Cheese . . lb. 59c
Choice Baby Beef	Freshly Ground	Hormel Midwest
Pot Roast . . . lb. 47c	Ground Meat . . lb. 35c	Bacon . . . lb. 73c
Decker's Korn Kist	(3 LBS. \$1.00)	Fresh, Pure Pork Homemade
Bacon lb. 59c	Hormel All-Meat	Pan Sausage . . lb. 59c
	Franks lb. 49c	
	Whole—Cello. Bag . . lb. 49c	

FRESH FRUITS AND VEGETABLES

Local Hort Farm Big Ness—Fresh Mondays, Wednesdays, and Fridays
BLACKBERRIES . . . gal. \$1.25
 QUART — 33c
 Fresh Friday
STRAWBERRIES . . . pint 29c
 176 (Medium Large Size)—Florida
ORANGES doz. 39c
 No. 4 Size (Extra Large) Iceberg
LETTUCE 2 for 25c
 Fancy
YELLOW SQUASH 2 lbs. 25c

DAIRY PRODUCTS

½ Gallon Holiday
Mellorine each 49c
 Any Brand Sweet Cream
BUTTER per pound 81c
 ½ Gallon Glass Sanitary Grade A
Pasteurized Milk . . . 2 for 75c
 (Plus bottle deposits.)
 FACTORY DEMONSTRATION FRI. — SAT.—Carnation
COTTAGE CHEESE . full lb. 25c

State High School Swim Meet Set Here

The annual state high school swimming meet will be held here Saturday in P. L. Downs jr. pool.

Twelve schools have turned in entry blanks with more expected, said swimming Coach Art Adamson. He expects this to be one of the largest meets ever held.

Lamar high school (Houston) is the defending champ. They have won every year since 1946, except in 1949 when Highland Park (Dallas) nosed them out. Lamar will be without many of last year's stars who scored a large number of their points.

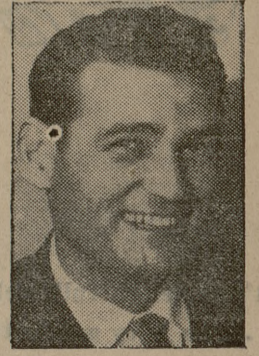
It looks like Highland Park will be the favored team this year with Lamar, Reagan (Houston), Alamo Heights (San Antonio) and A&M Consolidated giving the strongest competition.

Teams entered so far are Lamar, Reagan, San Jacinto (Houston), Galena Park, Tivy, Odessa, A&M Consolidated, Paschal (Ft. Worth), Beaumont High, S. F. Austin (Bryan), Austin (Austin), Alamo Heights and Highland Park.

The meet is sponsored by the athletic department. Preliminaries will start at 2:30 p.m. and the finals will be at 7. There is no admission charge.

WE SALUTE

W. DEE KUTACH
 302 Park Place
 College Station
 Phone 6-1281



We salute our area leader for the month of March. His efforts on behalf of his friends and neighbors have earned him the recognition as being one of our outstanding Great Southerners. You can confidently rely upon his counsel when he calls to discuss your needs for life insurance protection.

GREAT SOUTHERN
 Life Insurance Company
 Founded 1909
 Home Office • Houston, Texas

Frozen Foods

BIG FACTORY DEMONSTRATION AND SALE
MORTON'S PIES

TURKEY POT PIES PEACH PIE FOR TWO
 CHICKEN POT PIES APPLE PIE FOR TWO
 BEEF POT PIES CHERRY PIE FOR TWO
 Choice of 4 — 79c

6 Oz. Snowcrop
Orange Juice 2 cans 35c
 Snowcrop
Strawberries pkg. 29c
 Birdseye
Cut Green Beans . . . 2 pkgs. 43c
 Snowcrop or Birdseye
Perch Fillets pkg. 43c

GROCERY SPECIALS

Halves or Pieces
SHELLED PECANS . . lb. 39c
 8 Oz. Cello — 49c 4 Oz. Cello — 27c
 No. 1 Shelled—2 Lb. Cello. Bag
SPANISH PEANUTS 49c
 (Limit 1)—Vacuum Pack
CDM COFFEE . . . 1 lb. can 99c
 1 Lb. Can
FOLGER'S COFFEE . . \$1.09
 Popular Brands—(Others Proportionately)
CIGARETTES carton \$2.09
 Ballard's or Pillsbury's
BISCUITS 3 cans 29c
 (Limit 2 Please)
HORMEL OLEO . . . lb. 19c
 Mixed Sizes and Colors in Paper Bags
EGGS — Guaranteed . . dozen 39c
 1 Lb. Sunshine Krispy
CRACKERS box 25c

1 Lb. Can FREE With MRS. TUCKER'S
SHORTENING 3 lb. can 83c
 5 Lb. Bag Pillsbury's
BEST FLOUR each 43c
 Libby's 14 Oz. Bottle
CATSUP each 17c
 ● SALE OF CANNED FOODS ●
 No. 303 Cans Happy Host—Green and White
LIMA BEANS 2 cans 27c
 303 Cans Curtis Standard
TOMATOES 2 cans 27c
 Buffet Cans—Happy Host—CUT GREEN
ASPARAGUS SPEARS . . . can 16c
 No. 2 Cans—Dolly Madison Bing Type
DARK SWEET CHERRIES . . can 37c
 15½ Oz. Cans Viviano Prepared—Tom. Sauce & Cheese
SPAGHETTI 2 cans 25c

Southside Food Market
 WE RESERVE THE RIGHT TO LIMIT QUANTITIES
 STORE HOURS: 8 a.m. — 7 p.m. Daily
 3 Blocks Due South of Kyle Field, College
 Open 30 Minutes Earlier Fri. & Sat. — Closed
 Sundays. A Complete One-stop Market
SPECIALS STARTING 4 P.M. THURS. THRU SAT. APRIL 22 - 24