

# SPORTS SHORTS

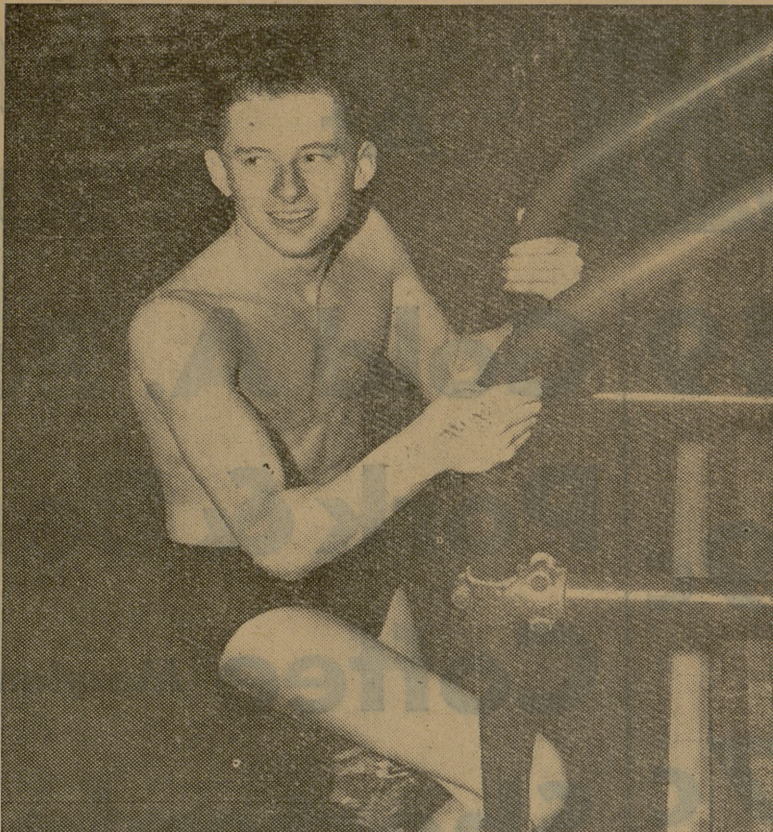
By BOB BORISKIE

Battalion prints the following story, a publicity item from Look magazine, in the belief that there will be this area who may be interested in submitting a story to this article. We look forward with a great deal of anticipation to some very interesting replies.

On July 27—Little League was condemned today for endangering the physical and emotional welfare of our children."

The many undesirable features of Little League are clearly recognized in Los Angeles, where the Park Department has forbidden Little League ball on its playing fields. Dr. C. L. Lowman, distinguished surgeon at the Los Angeles city schools, said in the magazine: "I consider the movements to encourage highly organized competitive activity for boys and girls below the high school age to be especially dangerous because neither skeletal growth, cartilages or joints, to say nothing of muscles, are sufficiently developed. Furthermore, the emotional pressures of practice periods before the game, followed by either victory or defeat, cannot be withstood because of immaturity."

"Little League as it stands today," Dr. Boucher said, "is not for my boy or yours. The drive to win is traditional in America and must be preserved. But a boy will absorb that lesson soon enough



**ALL AMERICAN**—Aggie Dick Weick was selected by the Swimming World magazine as the All-American Intercollegiate swim team in the 100-yard breast stroke. Norman Ufer of John Reagan High School was also named to the team in the 100-yard back stroke. Ufer plans to enter A&M in the fall.

in high school. In his grammar-school years, it is more important that his recreation be guided toward other objectives: the fun of playing rather than winning; the child rather than the game; the many rather than the few; informal activity rather than formal; the development of skills in many activities rather than specialization. Many of these desirable objectives are not accomplished in the way the Little League now works."

As an example of the "dangerous madness" that can strike a commonly, Dr. Boucher cites Port Chester, N. Y. The Port Chester Little League champions were scheduled to play in the region tournament when polio struck the team. Dr. Bernard J. Goffre, Port Chester health officer, recommended that the trip be canceled, but Dr. Goffre was overruled by the players' parents at a meeting presided over by the man who is now mayor of Port Chester. At this point, Dr. William A. Holla, Westchester County health commissioner,

## Legion Loses First Game To St. Thomas

The Saint Thomas Eagles moved one-up in the Area III American Legion baseball playoffs Wednesday night at Public School diamond, blanking College Station, 6-0, behind the combined one-hit pitching of Lupe Fraga and Armando Tello. Fraga was superb in a six-inning stint, allowing one hit and fanning six to get the victory. The right-hander tired in the seventh and Tello finished up in hitless fashion.

The Eagles, now unbeaten in 17 straight Legion contests, used seven College Station errors, seven base hits and eight walks off losing pitcher Pinky Cooner to scatter their run-scoring over four innings.

The series winds up in College Station Saturday with the second game set for 3 p.m., and the third to follow, if needed.

### Box score:

COLLEGE STATION	AB	H	PO	A
Engelbrecht, If	4	0	6	0
Garcia, 3b	3	0	1	0
Carroll, ss	3	0	0	3
Bonner, 2b	3	0	1	0
Cooner, p	3	0	0	2
H Hickman, cf	3	0	2	0
Free, c	2	0	1	0
Bond, rf	3	0	1	0
Floek, 1b	3	1	5	0
Totals	27	1	24	6

SAINT THOMAS	AB	H	PO	A
Staples, If	4	1	2	0
Fraga, p	4	3	0	2
Neumann, 1b	4	1	14	0
White, c	4	0	7	1
Magee, 3b	3	0	1	3
Tuttle, rf	3	0	2	0
Brauer, ss	4	0	0	1
Jordan, cf	3	0	1	0
Grant, 2b	2	1	0	0
Tello, p	1	1	0	2
Totals	36	7	27	9

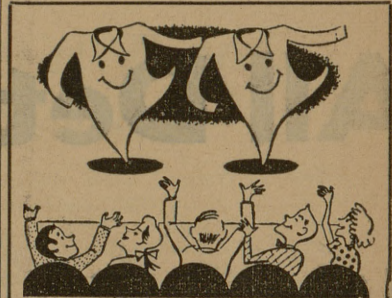
## Legislature

(Continued from Page 1)  
An open session is required only for final action.

Maine—The interim legislative research committee was authorized to hold hearings in private if it felt publicity would hinder its investigations.

West Virginia—Rejected a resolution to require a committee investigating road commission practices and policies to open all sessions to newsmen.

Nebraska—Defeated a proposed change in rules that would have permitted publication of information on how each member voted in committee.



If you like fresh, neat looking clothes—  
Take Your Cleaning To...

**CAMPUS CLEANERS**

**MIDLAND-ODESSA**  
4 hours, 29 minutes

**PIONEER AIR LINES**  
Timed By Baylor Phone 4-5054 for reservations

**Battalion Classifieds**

**RENT OR TRADE.** Rates word per insertion with space rate in classified. 60¢ per column-inch. Send to STUDENT ACTIVITIES. Ads must be received in the office by 10 a.m. on the publication.

### Special Notice

For degrees are now being Registrar's office from all expect to graduate at the summer session (August), ac- L. Heaton, registrar, Stu- expecting to complete the for their Baccalaureate or res during the summer ses- call by the office of the later than August 1, 1953 and option for their degree.

### SPECIAL NOTICE

**JUDGE NO. 1300 A.F. & A.M.**  
Called meeting Thursday, July 30, 6:45 p.m. E. A. & M. examinations. Work in E. C. Degree. EDWARD MADELEY, W.M. N. M. McGINNIS, Sec. do baby sitting in my home. C-3-Z College View.

### HELP WANTED

Wanted for the North Zulch m. A combination English- chian and a Home-Making (I) or write J. E. White, Supt. North Zulch, Texas.

### Directory of Business Services

of all kinds, Homer Adams. Call 4-1217.

### BARAPE

ationed restaurant very day—5 to 12 closed Sunday

### TSWEL

arlton R. Lee TOMETRIST A East 26th 62 for Appointment from Court House)

### MARKET

### ON

### IF

### S

### ST

### K.

### ES

### ari

## Majors Give Up Thirteen Walks

Tyler pushed across six runs on three hits in the wild and walk-filled sixth inning last night in Tyler to win 6-3 and to chalk up a win in the game with the Bryan Majors.

The East Texans got only six hits off four Bryan hurlers, but received 13 walks. Gale Pringle went all the way for Tyler to rack up his 11th win, while Bill Hockenbury was charged with the loss.

Leading the Bryan hitters was West Gibson with a perfect night at the plate, with a double and three singles in four trips to pick up four of the 10 Bryan base hits.

In Tuesday night's game, Tyler's Hank Wyse, former major league hurler, snapped a Tyler six-game losing streak with a four-hit performance as the Majors fell, 3-1.

Losing pitcher for Bryan was Joe Pipak as Tyler rapped out 12 base blows off Pipak and Bart DiMaggio.

The Majors wind up a three game series with Tyler tonight, and then move to Wichita Falls for two games with the league-leading Spudders. The Majors return to Travis Park Sunday for a five game stand beginning with Tyler on Sunday and Monday, followed by a three-day visit by the Austin Pioneers.

er, intervened: "There is no justification," he said, "for sending those kids on such a trip. When there are many polio cases in a community as small as Port Chester, it becomes an epidemic area."

## Market Specials

We guarantee every cut of meat we sell to give you complete satisfaction. We can save you important money on your deep freeze needs. Figure with us.

- |   |   |
|---|---|
| Hormel Midwest Bacon . . . . . lb. 69c                                    | Baby Beef—CHOICE Round Steak . lb. 59c                                |
| Swifts' Premium Tender Chick—Whole In Cello, Bag Fryers . . . . . lb. 55c | For Swiss or Roast, Baby Beef CHOICE SHOULDER Round . . . . . lb. 49c |
| Mission Pig Link Pure Pork Sausage . lb. 69c                              | Baby Beef—CHOICE Pot Roast . . . . . lb. 39c                          |
| Kraft Mild Hoop Cheese . lb. 55c  | For Broiling or Frying, Baby Beef CHOICE Club Steak lb. 59c           |
| V. C. Melody Lake Wieners . . . . . lb. 39c                               | Choice Veal Rump Roast . lb. 55c                                      |
| Freshly Ground Ground Beef . lb. 33c                                      | Baby Beef Choice Brisket, lb. 25c                                     |
| Hormel All-Meat Franks . . . . . lb. 49c                                  | Hormel Pre-Cooked—(Shank End) Ham . . . . . lb. 69c                   |

## Grocery Specials

- |  |   |
|--|---|
| Cooling, Refreshing—1/2 lb. carton Lipton's Tea . . . 59c                | Popular Brands Cigarettes . ctn. \$2.09   |
| Pkg. of 48 Tea Balls . . . . . 53c                                       | Nucoa Oleo . . lb. 29c  |
| 46 Oz. Cans Libby's Tomato Juice . ea. 27c                               | 6 Oz. Pieces New Ace—Fresh Stock Shelled Pecans, ea. 49c  |
| 46 Oz. Can Libby's Pineapple Juice . 29c                                 | For Better Baking. (Limit One Please) Crisco . . 3 lb. can 79c  |
| No. 2 Cans Del Monte—CRUSHED Pineapple . . . can 25c                     | (Limit 1 Please)—Pillsbury's Best Flour . . 5 lb. bag 39c   |
| Maxwell House or Folger's (Limit 1 Only Please) Coffee . . . . . lb. 79c | (Limit 1 Please) 10 Lb. Bag Cane Sugar . each 89c   |
| 12 Oz. Jars Crunchy or Smooth Peter Pan Peanut Butter . . . 69c          | Switch to Sanitary. It does not have that long hot haul from Houston. Brazos County's Grade A PASTEURIZED Milk . 2 - 1/2 gallons 71c (Plus bottle deposits) |
| Large Box Blue Cheer . pkg. 28c  | 12 Oz. Swift's Luncheon Meat Prem . . . . . can 45c   |
| No. 2 Cans Diamond Sweet Potatoes . . 24c                                | One of the Better Brands. Red Crown Vienna Sausage . . 35c  |
| 15 1/2 Oz. Cans NuCrest Pork & Beans . . 28c                             | No. 2 Can Wolf Chili . . . can 53c  |
| 1000 Single Sheets Scottissue . . . roll 10c                             | For a Cool, Refreshing Drink Koolaid . . 6 pkgs. 25c  |
| 12 Oz. Cans Heart's Delight Peach Nectar . . . 28c                       | Sunshine Krispy Crackers . 1 lb. box 23c  |
| No. 7 1/4 Jars Rio Grande Salad Bowl Stuffed Olives . ea. 27c            |   |

## Frozen Foods

Donna Dean Brand Strawberries . . . can 31c

Birdseye French Fries . . . pkg. 25c

Stokely's or Birdseye—CHOPPED Broccoli . . . . 2 pkgs. 39c

Stokely's or Birdseye—PEAS AND Carrots . . . . 2 pkgs. 39c

Birdseye or Stokely's—MIXED Vegetables . . . pkg. 22c

1/2 Gal. Lilly or Holiday Mellorine . . . . each 59c

Minute Maid Orange Juice . 2 cans 35c

Minute Maid Lemonade . . . 2 cans 39c

## Fresh Fruits & Vegetables

Flavorful Texas ELBERTA Peaches . . . . . 3 lbs. 28c  
Carton of 8 pounds—59c

Home Grown BLACKEYE or Cream Peas . . 2 lbs. 27c

Home Grown Hort. Farm "Smith's Perfect" Variety Cantaloupes . . . lb. 5c

Grown on the Franklin Experiment Station Chilled Watermelons . . lb. 2 1/2c  
PLAIN . . . . . lb. 2c

Size 432 Calif. Sunkist Lemons . . . . . doz. 35c

Premium Grade Calif White Potatoes . . . . 6 lbs. 29c

Home Grown Young Tender Okra . . . . . lb. 18c

## Hot Rod Races

(UNDER THE LIGHTS)  
HOT ROD HILL—1/2 MILE WEST ON HIWAY 21  
July 24 8 p.m.



## Southside Food Market

Specials Starting Thursday Afternoon, Friday & Sat. - July 30 - 31 - Aug. 1

STORE HOURS: 8 a.m.—7 p.m. Daily. Open 30 Minutes Earlier Fri. & Sat. Closed Sundays

At Southwest Corner of the Campus A Complete One-Stop Market

WE RESERVE THE RIGHT TO LIMIT QUANTITIES