

With A Slide Rule Imitate Brody ing Hot Spells

HARDESTY

The Depth-O-Meter is at that level. What is the ideal temperature for bass? The 65 to 75° bracket, especially from 70 to 72° is favorable for bass. Find that range, use either live bait or artificial lures that may be operated at that level, and your chances of catching fish during hot days will be greatly improved.

Here is a temperature and bait chart that might prove helpful:

Recommended for Lakes and Ponds

Surface temperature of water — Type of bait and usual depth of fish.

32 to 40°—Fish are inactive (in the south).

40 to 45°—Fish are inactive.

45 to 50°—Fish are inactive.

50 to 55°—Fish are deep, use live bait.

55 to 60°—Fish are 10 to 15 feet deep, use live bait.

60 to 65°—Fish are 7 to 10 feet deep, use live bait or artificial bait.

65 to 70°—Fish are very active, surface to 10 feet. Live bait and surface lures are best.

70 to 75°—Fish are most active, surface lures, live bait, to 10 feet deep.

75 to 80°—Fish with surface lures early and late, 5 to 12 feet during day with live bait. Surface lures good at night.

80 to 90°—Fish with surface lures early and late, 12 to 30 feet deep with live bait or troll. Use black surface lure at night.

Give this chart a try on your next fishing trip and you will be sure to fish where there are fish. Local fishermen had a rough time this past week-end. Few good catches were reported. Mrs. Margaret Coleman caught small bass and bream at Camp Creek. Mrs. Florence Woolket and party also caught bream.

The Solar Tables indicate that fishing will be at its best (which is none too good during August) from daylight Saturday and Sunday until 7:30 a.m. and from 5:00 p.m. Saturday and Sunday until dark.

Try these periods and perhaps night fishing for your best chances at a mess of fish.

Majors Smother Paris, Split Two Game Series

The Bryan Majors defeated the Paris Indians 11 to 1 Monday night in Paris to gain a split in the two game series.

In the first inning, Indian shortstop Bobby Montelongo doubled, and scored on Remy LeBlanc's single to take a one-run lead that lasted until the top of the fourth when Bryan's John Goodell tripled to score Frank Scarpace. Bob Salsberry followed with a single to give Bryan a 2 to 1 margin.

The Majors continued to pile up the runs, scoring two runs in the fifth and two more in the sixth. They chalked up five big runs in the ninth off three singles and two bases on balls to wind up the scoring.

Winning pitcher for the Majors was Vic Stryka, while Hinkle was

charged with the loss. Stryka gave up five hits, including the two-base blow by Montelongo, and his mates backed him up with 12 solid hits. Scarpace and Goodell both tripled for the Bryan club.

The win left Bryan tied for fifth place with Longview, who downed Temple by a 7 to 3 score in a home tilt.

Wichita Falls widened its league lead to two full games over second place Tyler with a 6-3 victory over the East Texans. Third place in the standings is Texarkana, three games off the pace, while Temple holds down fourth spot, three and one half games back. Bryan and Longview are four and one half games behind Wichita Falls, Austin is seventh, seven and one half games out of first, and Paris is

submerged in the cellar with a 23 game deficit.

Bryan opens a three game series tonight against Tyler in Tyler, and then moves to Wichita Falls for two games with the league leading Spudders. The Majors return to Travis Park Sunday for a five game stand beginning with Tyler for games on Sunday and Monday, followed by a three-day visit by the Austin Pioneers.

Minor League All-Star Tilt Scheduled Thursday Night

By MAURICE OLIAN

The all-star game between the Minor League All-Stars of College Station and Bryan has been scheduled for Thursday.

The game will be played at Little League Park starting at 7:00 p.m., and a large crowd is expected for the tilt between these hustling youngsters.

Much thanks should be given to the following sponsors for their support of the minor league program for this year: (Bryan) Lions Club, Rotary Club, Jaycees, Kiwanis Club, A&M ROTC Dept., W. E. Kutzschbach Contractors, Seth Wood Furniture Co., Wick Massey Motors, (College Station) Lions Club, Kiwanis Club, and Recreation Council (which supported two teams).

The concession stand managers for the game will be Mr. and Mrs. Frank Seale. Mothers of players selected for the all-star tilt are volunteering to do the rest of the work in the concession stand.

Walker Jacobs and John Mackin will manage the College Station all-stars since they piloted the Lions Club Cubs to the regular season championship.

Boys selected on the College Station all-star team are: Kenneth Bailey, .273; Jim Johns, .205; Mike Kerley, .324; and Joe Randolph, .273 (all twelve year olds);

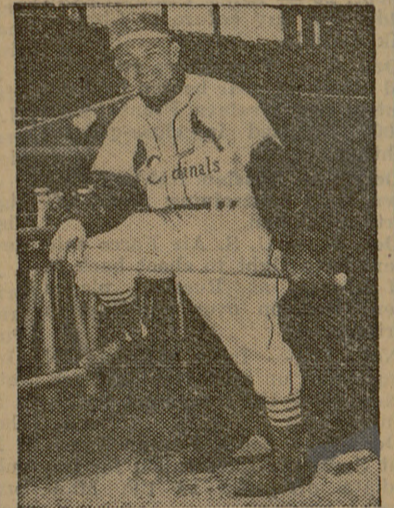
Brochure Has Eye Filler

To make sure sportswriters, TV and radio men at least open the Red Raiders' 1953 pressbook, to be distributed this month, Texas Tech is including on page 6 a picture of Connie Hopping, Miss Texas for 1952-53. Connie, a Tech student, appears with co-captains Don Gray and Vic Spooner. Incidentally, Miss Lubbock for 1953-54, Zoe Merriman, is a member of Tech's women's fencing team.

Cardinals To Hold Tryouts In Houston August 6 And 7

ST. LOUIS—(Spl.)—Houston will be one of the sites of the St. Louis Cardinals nation-wide tryout camps when Red Bird scouts will look for diamond talent at Buffalo Stadium on Thursday and Friday, August 6 and 7.

Manager Eddie Stanky stressed the importance of tryout camps by



Eddie Stanky

relating that, "The Cardinals since 1926—when they won their first pennant and World Series—have been a first division ball club 23 years of 27 primarily because they operate the finest farm system ever

Texas Tech Is Building

A cinder track, two baseball diamonds, a new football practice field, and tennis courts have been authorized at Texas Tech. They'll be situated in the vicinity of a coliseum to be built on Tech campus by the City of Lubbock. The coliseum may seat about 10,000 for basketball. Four new sections, seating 2,000 each, will be completed at Jones Stadium before the Chicago Cardinals and the Baltimore Colts meet there Aug. 22. This will make it possible for nearly 30,000 to see football in Lubbock.

Axe Buried

WITH 2ND INFANTRY DIVISION, KOREA—Two Texas officers met recently for the first time in 25 years while serving with the 2nd Infantry Division in Korea.

They are Colonel Louis V. Hightower and Major George L. Milner.

Col. Hightower is the division chief of staff, while Maj. Milner is division civil affairs officer.

They parted 25 years ago, after a boyhood friendship that carried them through grammar and high school together, when Hightower enrolled in Texas University and Milner attended A&M.

seen in professional baseball.

"Right now exactly three-fourths of the players on our team were developed in the Cardinal minor league system. On top of that one-fourth of the players were originally discovered in Red Bird tryout camps.

Each summer the St. Louis National Leaguers conduct tryout camps throughout the country as a means of giving young players between 17 and 23 a chance to win a professional baseball contract.

"Major league talent," emphasized the Red Bird skipper, "must be developed in the minors. And today the Cardinals have the best system for the development and advancement of young players."

Players who report for the workouts August 6 and 7 are to bring their own glove, shoes and a uniform, if they have one. Workouts are scheduled to begin each morning promptly at 10 o'clock.

The Cardinals will refund all expenses incident to attending the sessions to all players who are signed to a contract in the Red Bird minor league organization.

Ips Bark Beetle Causes Damage

Ips bark beetles are reaching alarming proportions in pine stands of East Texas which have been burned by wild forest fires, according to an announcement today by A. D. Folweiler, Director, Texas Forest Service.

Serious infestations of pine have been reported in Marion, Trinity, Jasper, Newton, and Hardin counties. No serious outbreaks of the beetle have been found on areas which have not been burned, he reported.

Pine trees attacked by the Ips beetle usually die. The beetles also spread rapidly from one tree to another and any outbreak noted should be attended to immediately.

Due to the association between burned forest land and beetle damage, the use of fire for any purpose in the piney woods should be avoided, otherwise extensive damage may be done in pine stands. Such burned areas may also act as a breeding ground for Ips or other bark beetles which may spread to adjacent unburned areas of forest land.

Any outbreak of beetles should be reported to the nearest public or private forester and steps taken to combat the infestation. Local foresters in the piney woods area are acquainted with the necessary control measures. A circular on the control of the Ips bark beetle is also available upon request from the Texas Forest Service at College Station.

DYERS-FUR STORAGE HATTERS

American

LAUNDRY-DRY CLEANERS

DIAL 2-1585

210 S. Main Bryan Pho. 2-1584

LOUANN'S FOR HAPPY MUSIC

LOUANN'S

Every Friday
Happy Music With
Cell Block
Seven

Make
Your Reservations
NOW

Call EM-2688

LOUANN'S

Greenville and Lovers Lane
at Central Expressway

LOUANN'S FOR HAPPY MUSIC

APUS

ST DAY

Use of Vicki and the
Wasn't Her Own!

TECHNICOLOR

THRU SAT.

POWDER RIVER

BULLET-SCREAMING FURY AND SUSPENSE!

CORINNE CALVET

CIRCLE

4-1250

TODAY and WED.

SEMINOLE

Rock Hudson Barbara Hale Anthony Quinn

— Also —

MONROE JOAN LESLIE

TOUGHEST MAN IN ARIZONA

TRUCOLOR 12

GGIES!!

We Have Food to Suit Your Taste

Excellent Service

Wehrman's Cafe

Highway 21 West in Bryan City Limits
1009 W. 25TH STREET

Across the Highway from Bryan Tractor & Supply Co.

No. 1 in Texas

No. 1 in sales: more Texans use Esso Extra than any other premium gasoline; every day 65,000 Texans fill up with Esso Extra.

No. 1 in anti-knock performance: Esso Extra has an extra high octane rating.

No. 1 in power: you'll notice the extra power in Esso Extra at every traffic light, on every mile of highway driving.

No. 1 for quick starting: summer, winter, any season of the year, your motor starts extra quick when you use Esso Extra.

No. 1 for economy: users say Esso Extra gives them extra gasoline mileage.

... and Esso Extra contains a patented solvent oil that dissolves the gummy substances which collect soot and carbon under valves; it keeps your engine extra clean.

Enjoy your car!

Let your neighbor under the Humble sign fill your tank with Esso Extra and discover for yourself that Esso Extra is the No. 1 gasoline in Texas—first in sales among premium gasolines because it's first in quality.

HUMBLE

HUMBLE OIL & REFINING CO.

An outstanding gasoline at regular price
HUMBLE MOTOR FUEL

Just as Humble Esso Extra is the quality leader among premium gasolines, continuously improved Humble Motor Fuel is an outstanding gasoline at regular price. . . . Whichever you use—premium grade or regular—fill up under the Humble sign in your neighborhood. The Humble trade mark is your guarantee of EXTRA quality.