

# MOTOROLA TELEVISION SET FREE!

## 29.95 MOTOROLA TV

TO BE GIVEN AWAY

### ABSOLUTELY FREE

THE SHOPPING CENTER THIS WEEK AND SEE  
DETAILS POSTED IN STORE!

NO GUESSING • NO CONTEST • NOTHING TO SEND OFF

YOU WILL NOT HAVE TO BE PRESENT TO WIN  
WE WANT YOU TO HAVE A CHANCE

✓ *check*  
**THESE FOOD SAVINGS!**



DEL MONTE SLICED PEACHES 5 No. 303 Cans \$1.00

## Almond Pork and Beans

No. 300 Can 5c

## Del Monte Cream Corn

Yellow No. 303 15c

## Walden Tomato Catsup

14 Oz. Bottle 15c

**"LISTEN"**

TO RADIO STATION  
W T A W  
FRIDAY  
9:45 P.M.

for additional  
RADIO SPECIALS  
and special program  
originating in the  
SHOPPING CENTER

Folger's  
**COFFEE**  
lb. 89c

Crisco  
**HORTENING**  
3 lbs. 79c

Imperial  
**SUGAR**  
10 lbs. 79c

Kimbell's  
**FLOUR**  
5 lbs. 39c

TRELLIS PEAS . . . 2 No. 303 Cans 25c

BITS-O-SEA TUNA . . . can 23c

7 Oz. WHEATIES  
Kix or Cheerios . . . . . 15c

Betty Crocker  
Cereal Tray . . . . . each 29c

Dole—No. 2  
Pineapple Juice . . . 2 cans 25c

Armour's—1/4's  
Potted Meat . . . . . 3 for 25c

Prem—12 Oz.  
Luncheon Meat . . . . . 43c

Sun Valley  
Margarine . . . . . lb. 19c

Kim  
Dog Food . . . . . 4 cans 31c

Diamond  
Dill Pickles . . . . . qt. 25c

Del Monte—No. 2 1/2  
Fruit Cocktail . . . . . 35c

Swansdown  
Cake Mix . . . . . pkg. 33c

Underwood  
Deviled Ham . . . . . can 19c

Charmin  
Napkins . . . . . 2 boxes 23c

Franco American  
Spaghetti . . . . . 2 cans 27c

Kimbell's—300 Cans—Fresh  
Fresh B. E. Peas . . . 2 cans 25c

Diamond Chopped—No. 1  
Turnip Greens . . . . 3 cans 25c

Lady Betty  
Salad Dressing . . . . qt. 39c

Kimbell's—Strawberries—12 Oz.  
Preserves . . . . . 29c

Kimbell's—12 Oz.  
Peanut Butter . . . . . 29c

Diamond—No. 1  
Tomatoes . . . . . 3 cans 25c

**• BABY WEEK SPECIALS •**

Gerber's Strained or Chopped  
BABY FOOD . . . . . 3 cans 23c

GERBER'S CEREALS . . . 2 boxes 33c

GERBER'S MEATS . . . . can 19c

BIB ORANGE JUICE . . . . can 8c

Gerber's  
TEETHING BISCUIT . . . box 19c

WHITE KARO SYRUP . . . pt. 21c

PET MILK . . . . . 2 tall cans 27c

can 8c

**SHOP THIS DEPT. DRUGS & SUNDRIES FOR SAVINGS**

CHLORODENT TOOTH PASTE . . . . Large 69c size 49c

DREENE SHAMPOO . . . . . Large 79c size 69c

SCHICK INJECTOR BLADES—12's . . . . 39c

J&J BABY POWDER—25c Size . . . . 19c

J&J BABY LOTION—59c Value . . . . 39c

J&J BABY OIL—50c Size . . . . . 39c

J&J BABY SOAP . . . . . bar 15c

LOAF SIZE BREAD FRESHNER . . . each 98c

Sized  
HOUSEHOLD & GARDEN GLOVES . . . pr. 59c

**FARM-FRESH**

**BANANAS**  
Firm Yellow  
Central  
American  
2 lbs 19c

FANCY GREEN BEANS . . . . . lb. 19c

PASCAL CELERY . . . . . stalk 9c

SUNKIST LEMONS . . . . . 2 lbs. 29c

New Red  
LOUISIANA POTATOES . . . . . lb. 5c

TOMATOES—Cello Carton . . . . . each 17c

TURNIPS & TOPS . . . . . 2 bunches 29c

FLORIDA ORANGES . . . . . lb. 8c

FRESH EAR CORN . . . . . 6 for 25c

YELLOW ONIONS . . . . . lb. 5c

CARROTS—Cello Bag . . . . . 2 for 19c

**— PICTSWEET —**

CUT BROCCOLI . . . . . 2 pkgs. 35c

PEAS & CARROTS . . . . . 2 pkgs. 35c

SQUASH . . . . . 2 pkgs. 35c

West Wonder—10 1/2 Oz.  
STRAWBERRIES . . . . . 29c

Floridagold—6 Oz.  
ORANGE JUICE . . . . . 2 for 29c

Prioron  
FILET OF CATFISH . . . . . lb. 53c

**NO-TRIM QUALITY Meats**

ARMOUR'S Flavor Fresh (Whole) lb 52c

ROUNDED STEAK lb 69c

U. S. Grade Good Block Trimmed Rump Roast . . . . . lb. 69c

Ground Hamburger . . . . . lb. 38c

Whole or Shank Ham . . . . . lb. 59c

Butt Portion . . . . . lb. 64c

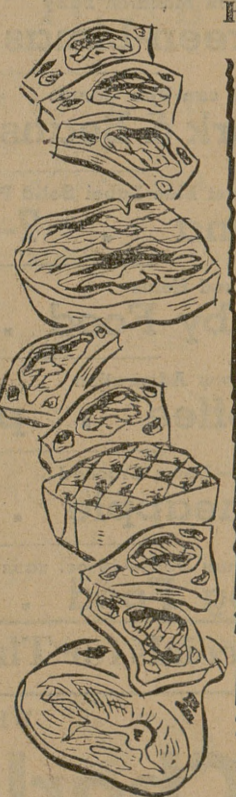
Cur's Star Bacon . . . . . lb. 62c

Cent Bacon . . . . . lb. 39c

Cur's Weiners . . . . . lb. 45c

Pressed Ham . . . . . lb. 49c

Cheddar Cheese . . . . . lb. 59c



**The CENTER INN**

Broiled Small

**CLUB STEAK**

or

Whole Fried

**BABY RED SNAPPER**

Served with Green Salad & French Fries and Hot Baked Rolls

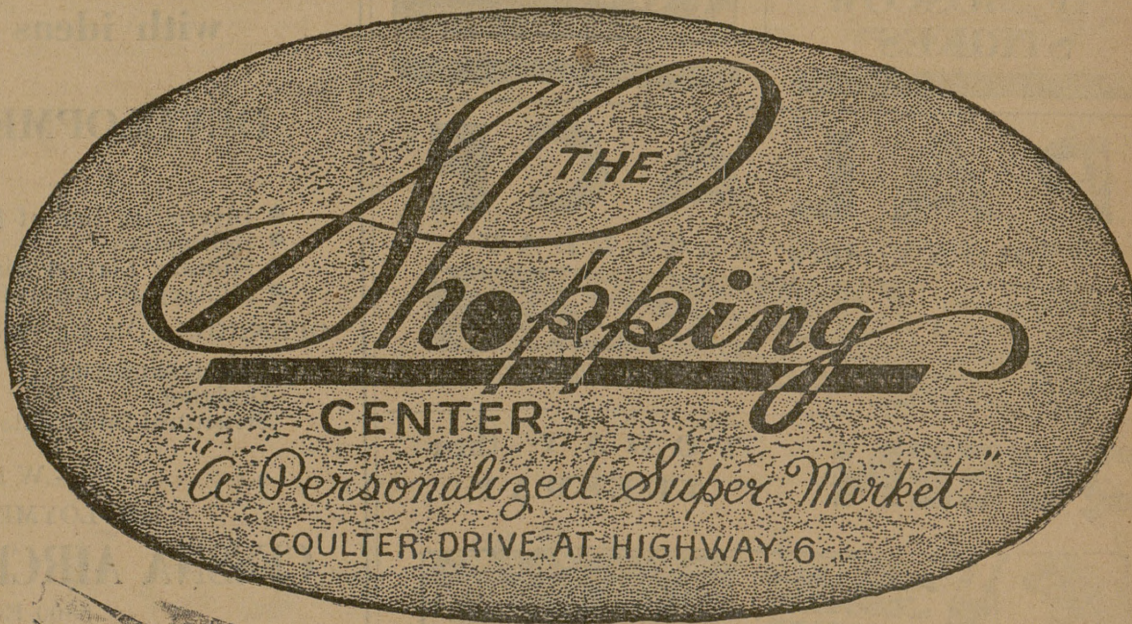
**75c**

SPECIALS IN CAFE THRU SATURDAY

"Serving a Variety of Good Food"

**— HOURS OPEN —**  
Open 7 Days a Week—8 A.M. to 8 P.M.  
Except Friday and Saturday—Open Until 9 P.M.  
Right Reserved to Limit Quantities

THE BIG SUPERMARKET AT  
COULTER DRIVE ON HIGHWAY 6



**OPEN 7 DAYS A WEEK - Specials**

Thursday P. M. -- Friday  
Saturday & Sunday