

Fight for Freedom

Free Men Must Stay Expendable Even In Peace

By KENNETH L. DIXON Managing Editor of the Lake Charles (La.) American Press (From an address delivered at the University of Iowa)

"Free Men Must Remain Expendable." To that arbitrary statement I will add an equally arbitrary conclusion:

Unless free men start remaining expendable, they will continue to lose their freedoms periodically—as they have in the past—until the day comes when they can no longer recover those lost freedoms in a blaze of fire and glory.

It is difficult to forget those moments of fire and glory when free men—or brave men fighting to be free—have finally stepped upon the altar of expendability and shouted out words that still send a chill down the spine.

They vary from "They shall not pass" to that sergeant's sarcastic cry as the ramps slapped down in the surf and the men of the first wave hesitated, "Come on, men! Leave us look good in the newsreels!"

Stories of Heroic Words

Sometimes these stories of heroic words of expendables on the spot are true; sometimes they are apocryphal. In either case they have served their purpose, the purpose of pointing out that there is a time when free men must accept the fact that they are expendable or there will be no freedom.

But those are men at war—and here we come to the problem.

History has long since established that the greatest threats to the rights of free men come during times of peace. The war that follows such threats and sometimes restores those rights is only the climax, the final phase.

Why was it not stopped before it ever reached that phase? Why? I'll tell you why:

Because, for some reason unknown to me, men generally decline to consider themselves expendable except in war—or so I have come to believe.

Why do men and women who stand ready to give their lives and their loved ones during the false drama of war tremble so quickly when lesser dangers confront them in times of so-called peace?

Why will a man throw himself into battle without regard for his life at one point in his existence and refuse to risk ten dollars' worth of business at another point when the battle is the same in both cases?

Suckers For Drama

Perhaps I am wrong, but the only hardboiled solution I can find is that we are still suckers for drama... false drama... phony drama.

And war provides all that—and some drama that is not phony.

If that be true, then the job ahead of us, as citizens and especially as newspapermen, is to accept it as such and set out to dramatize the continuing peacetime fight to protect our freedoms until its appeal transcends that of the inevitable tragic fight to regain them.

We must make it clear that while it is a tough job to become an expendable in wartime, it is a far tougher job to come home and remain willingly expendable at any and all seemingly peaceful times when our basic and individual rights and freedoms are threatened.

And this I fully believe:

If we do not start remaining constantly and alertly expendable on a world level, then not only will we lose all our freedoms and have to fight once again to regain them but also, if that fight comes, we stand in deadly danger of losing our final struggle, once and for all.

And I, for one, would far rather be expendable than enslaved.

The Battalion

Lawrence Sullivan Ross, Founder of Aggie Traditions "Soldier, Statesman, Knightly Gentleman"

The Battalion, official newspaper of the Agricultural and Mechanical College of Texas, is published by students four times a week, during the regular school year. During the summer terms, and examination and vacation periods, The Battalion is published twice a week. Days of publications are Tuesday through Friday for the regular school year, and Tuesday and Thursday during examination and vacation periods and the summer terms. Subscription rates \$6.00 per year or \$5.00 per month. Advertising rates furnished on request.

Entered as second-class matter at Post Office at College Station, Texas under the Act of Congress of March 3, 1879. Member of The Associated Press

The Associated Press is entitled exclusively to the use for republication of all news dispatches credited to it or not otherwise credited in the paper and local news of spontaneous origin published herein. Rights of republication of all other matter herein are also reserved.

News contributions may be made by telephone (4-5444 or 4-7604) or at the editorial office room, 202 Goodwin Hall. Classified ads may be placed by telephone (4-5324) or at the Student Activities Office, Room 209 Goodwin Hall.

FRANK N. MANITZAS, JOEL AUSTIN... Co-Editors Ed Holder, Jerry Bennett... Managing Editors Harri Baker... City Editor Peggy Maddox... Women's News Editor

Today's Issue

Jerry Bennett... Managing Editor Harri Baker... News Editor Bob Boriskie... Sports News Editor

Bob Hendry, Joe Hipp, Chuck Neighbors... Sports News Editors Gus Becker, Bob Boriskie, Jerry Estes... Sports News Editors Vernon Anderson, Frank Hines, Bob Alderice, Al Leroy Bruton, Guy Dawson, W. P. Franklin, R. D. Gossett, Carl Hale, Donald Kemp, Alfred McAfee, Bill Rogers, Ray Smith, Jerry Souther, Edward Stern, Roy Sullivan, Jon Kinslow, Dick Moore, Lionel Garcia, John Moody, Bob Palmer, Bill Shepard... Staff News Writers Jerry Wieg, Jerry Neighbors, Hugh Phillipus, Bill Thomas... Sports News Writers Jerry Bennett, Bob Hendry... Amusements John Kinslow, Dick Porter, Calvin Pig... City News Writers Conrad Stralu... Circulation Manager Lawrence Casheer, Jewell Raymond, J. R. Shepard, Fred Hernandez, Charles P. Chick... Circulation Staff Bob Godfrey, Davey Davidson, Roy Wells, Keith Nickle, Melvin Longhofer, Herman Meiners... Photo Engravers Gene Rydell, Perry Shepard, John Merrill... Advertising Representatives Dean Kennedy... File Clerk

In Judge's Hands Conley's Fight for Freedom

BOSTON, April 17—(AP)—Texan Louis B. Conley's fight for freedom from a record 32 months in Plymouth Jail for contempt rested last night with Superior Court Judge Lewis Goldberg who took his plea under advisement.

Conley, 31, Amarillo, seeks his release in a petition for a writ of habeas corpus.

He contends the Plymouth County Probate Court had no authority to jail him for failure to return his eight-year-old daughter, Lynette, to her mother, Mrs. Lucille Heroux Conley, Brockton. The child is in Texas. The Conleys are divorced.

Opposing counsel were given a week by Judge Goldberg in which to file briefs. Also, Plymouth County officials were authorized to submit briefs.

Conley Testifies

Conley testified he never was domiciled in Massachusetts and although notice by publication in the divorce proceedings gave the probate court jurisdiction in that

phase of his troubles, it was not empowered to jail him for contempt in refusing to return the child. Presently, Conley is serving one of several sentences which total 43 months. Conley testified he had never authorized a Supreme Court appeal by his lawyer from the divorce and custody decree obtained in 1948 by Mrs. Conley.

He said he had paid fees in the matter of custody in a petition of his former wife for separate support in March, 1948.

Petition Filed

Testifying he knew a divorce petition was filed, Conley said he did not know until later that a hearing was held July 12, 1948, and that his wife was granted a divorce, custody of the child and an order for support.

Conley contended the probate court exceeded its jurisdiction in jailing him because he said, it had never served him with proper notice in the custody and support proceedings.

To questions by the court, Conley said he had not authorized an agreed statement of facts—setting forth that Conley, his wife and child were all Plymouth County residents—which was approved in probate court when appeal was taken to the State Supreme Court. Conley and his wife met when he was stationed at Camp Miles Standish, near Brockton, during World War II.

Dartmouth Students Get Revenge for Town Poll Tax

From The West Virginia Wesleyan:

University students have had their little squabbles with the City of Morgantown, but nothing to compare with the troubles of Dartmouth students when the voters of Hanover, N. H., levied a poll tax against them a few years ago.

Hanover is one of the New England towns which retains the town meeting as a method of voting. Some outraged student, realizing that the poll tax implied that the students had voting privileges, thought of a plan.

So soon after, the students, vastly outnumbering the townspeople, descended on the town meeting and exercised their new right of franchise.

Accordingly, the young men passed laws providing that Hanover build a side walk with a canopy over it to Colby Junior College, New London, N. H., an 8-lane concrete highway to Skidmore College, Saratoga Springs, N. Y., and a subway to Smith, North Hampton, Mass., all women's colleges.

Then they put through legislation requiring the town to erect a town hall an inch square and a mile high, adjourned and went back to their studies.

After much legal rigamarole, the town officials got the state legislature to annual the laws, and needless to say, the poll tax was quietly dropped.

AFROTC to Use T-28s for Flights

Air Force ROTC orientation flights will be made in T-28s as soon as A&M instructors can be checked out in the faster craft, said Col. John A. Way, PAS&T.

Reason for the change, expected next week, is the transfer of Bryan AFB's T-6 trainers to another base.

The T-28 cruises at 200 miles per hour, compared to the T-6's 160, which gives the plane some of the flight characteristics of a jet plane, said Way.

More comfortable and roomier, the T-28 is a more advanced airplane. Its tricycle landing gear makes for safer, quicker landings because of the greater visibility obtained, said Way.

"We are very happy with the change," he said.

Interview Needed To Get Half Wings

Air Force ROTC students who intend to fly after graduation will get their wing certificates after an interview with Col. John A. Way, PAS&T.

The certificate authorizing wearing of the wings will be given to all seniors who have made application for flight training. Seniors should get their certificates from Way.

Juniors who intend to fly will receive their certificates after an interview with Way.

Sophomores who have passed the flight physical and display a desire to fly will receive their certificates after the interview.

"Cadets desiring an interview should come by my office at their own convenience," Way said.

The wings will be worn over the left breast pocket as regular AF wings are worn.

Consolidated Joins School Study Group

A&M Consolidated School is a charter member of the newly formed Gulf Coast School Research Development Association.

The organization will work on the solution of problems common to all members and furnish a consultant service for member schools with special problems.

Some of the research on problems will be published for the benefit of other Texas schools.

Members schools are Katy, Houston, Tomball, Aldine, Dickinson, Port Arthur, Beaumont, Spring Branch, Galveston, Hempstead, Cypress-Fairbanks, Liberty, LaMarque and A&M Consolidated.

Greyhound Bus Co. Changes Location

Aggies who ride home by bus are in for a long walk before they climb aboard for the ride home.

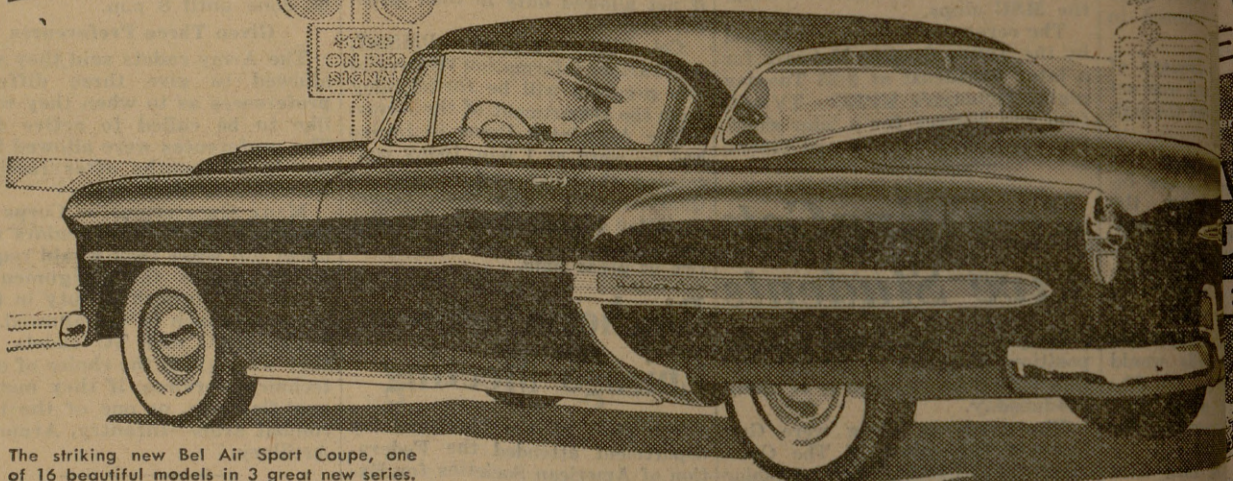
The local Greyhound and Kerrville Bus Company station has been moved to a new location, north of Highway 6 and Sulphur Springs Road intersection.

The station was moved from its old site at the North Gate when the location's owner decided to place second-hand furniture there, said Mrs. H. R. Seay. Seay is the owner of the new location.

A distance of approximately a mile and three quarters separates the new station from the New Dormitory Area. Freshmen are one mile away.

... and for your safety

Largest Brakes in its field with easier action



The striking new Bel Air Sport Coupe, one of 16 beautiful models in 3 great new series.

Chevrolet's improved Velvet-Pressure Jumbo-Drum Brakes give maximum stopping power with maximum ease of application



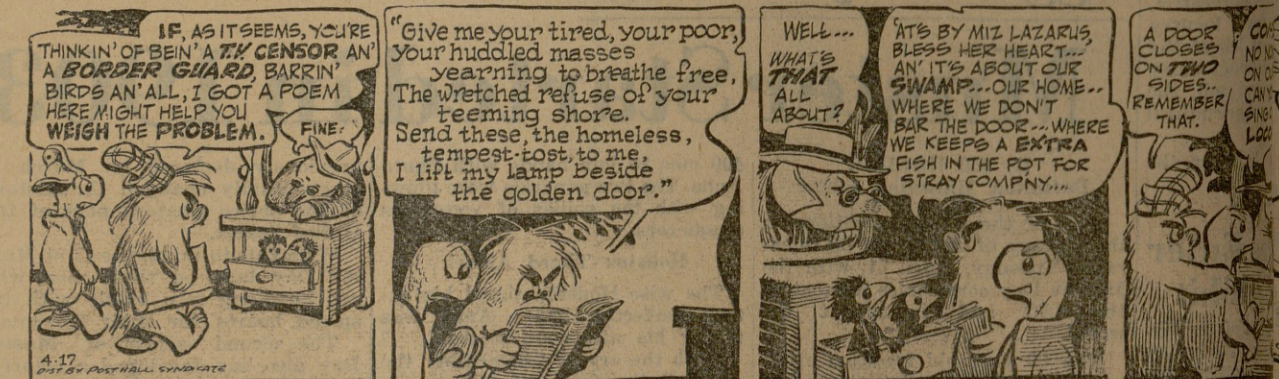
Entirely NEW through and through!

Chevrolet owners have long been convinced that they have the safest as well as the largest brakes on any low-priced car. And that is even more true in 1953. This year you will find much smoother, more responsive brake action... up to 23% less pedal pressure... and a softer, more velvety feel of operation. Realize, too, that here is the only low-priced car with sturdy Fisher Unisteel Construction, Safety Plate Glass in windshield and all windows, extra-easy Power many other important safety features you'll understand why new Chevrolet tops. Come in; see and drive advanced car, and we'll show your order now! *Optional Power Steering available on continuation of standard equipment. Price is dependent on model.

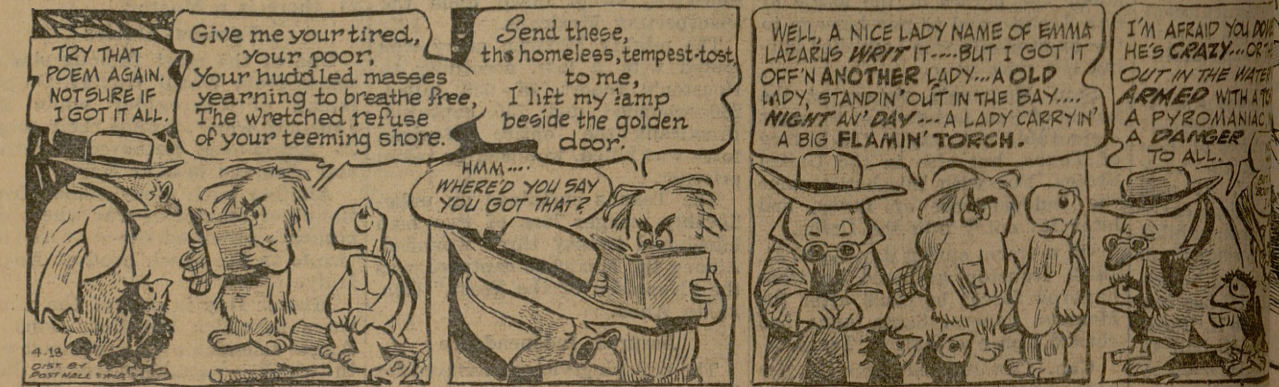
MORE PEOPLE BUY CHEVROLETS THAN ANY OTHER

SEE YOUR CHEVROLET DEALER FOR ALL YOUR AUTOMOTIVE NEEDS Conveniently listed under "Automobiles" in your local classified telephone directory

POGO



POGO



Next Will Be Aggie

There will be all this program, when April 25, said Betty gram com... The talent yet, but in baseball tes same as to balance it Cotton Ball three wins an The show t meets Rice m. in the diamond at the MSC.

This is the suffered five Pinalte for the play, but be tie with Tex (because of d Dance in) May Start The Home starting pite MSC will gill be Melvi an informal ten by SMU MSC Assembe start. W Rodney had two losses committee, as is made posuties for the set aside for committee ba The Home posed of 29 girls from a Bryan area. The MSC in charge of student-prof booth in the ball season, mas and Ma

House (because of d Dance in) May Start The Home starting pite MSC will gill be Melvi an informal ten by SMU MSC Assembe start. W Rodney had two losses committee, as is made posuties for the set aside for committee ba The Home posed of 29 girls from a Bryan area. The MSC in charge of student-prof booth in the ball season, mas and Ma

House (because of d Dance in) May Start The Home starting pite MSC will gill be Melvi an informal ten by SMU MSC Assembe start. W Rodney had two losses committee, as is made posuties for the set aside for committee ba The Home posed of 29 girls from a Bryan area. The MSC in charge of student-prof booth in the ball season, mas and Ma

House (because of d Dance in) May Start The Home starting pite MSC will gill be Melvi an informal ten by SMU MSC Assembe start. W Rodney had two losses committee, as is made posuties for the set aside for committee ba The Home posed of 29 girls from a Bryan area. The MSC in charge of student-prof booth in the ball season, mas and Ma

House (because of d Dance in) May Start The Home starting pite MSC will gill be Melvi an informal ten by SMU MSC Assembe start. W Rodney had two losses committee, as is made posuties for the set aside for committee ba The Home posed of 29 girls from a Bryan area. The MSC in charge of student-prof booth in the ball season, mas and Ma

House (because of d Dance in) May Start The Home starting pite MSC will gill be Melvi an informal ten by SMU MSC Assembe start. W Rodney had two losses committee, as is made posuties for the set aside for committee ba The Home posed of 29 girls from a Bryan area. The MSC in charge of student-prof booth in the ball season, mas and Ma

House (because of d Dance in) May Start The Home starting pite MSC will gill be Melvi an informal ten by SMU MSC Assembe start. W Rodney had two losses committee, as is made posuties for the set aside for committee ba The Home posed of 29 girls from a Bryan area. The MSC in charge of student-prof booth in the ball season, mas and Ma

House (because of d Dance in) May Start The Home starting pite MSC will gill be Melvi an informal ten by SMU MSC Assembe start. W Rodney had two losses committee, as is made posuties for the set aside for committee ba The Home posed of 29 girls from a Bryan area. The MSC in charge of student-prof booth in the ball season, mas and Ma

House (because of d Dance in) May Start The Home starting pite MSC will gill be Melvi an informal ten by SMU MSC Assembe start. W Rodney had two losses committee, as is made posuties for the set aside for committee ba The Home posed of 29 girls from a Bryan area. The MSC in charge of student-prof booth in the ball season, mas and Ma

House (because of d Dance in) May Start The Home starting pite MSC will gill be Melvi an informal ten by SMU MSC Assembe start. W Rodney had two losses committee, as is made posuties for the set aside for committee ba The Home posed of 29 girls from a Bryan area. The MSC in charge of student-prof booth in the ball season, mas and Ma

House (because of d Dance in) May Start The Home starting pite MSC will gill be Melvi an informal ten by SMU MSC Assembe start. W Rodney had two losses committee, as is made posuties for the set aside for committee ba The Home posed of 29 girls from a Bryan area. The MSC in charge of student-prof booth in the ball season, mas and Ma

House (because of d Dance in) May Start The Home starting pite MSC will gill be Melvi an informal ten by SMU MSC Assembe start. W Rodney had two losses committee, as is made posuties for the set aside for committee ba The Home posed of 29 girls from a Bryan area. The MSC in charge of student-prof booth in the ball season, mas and Ma

House (because of d Dance in) May Start The Home starting pite MSC will gill be Melvi an informal ten by SMU MSC Assembe start. W Rodney had two losses committee, as is made posuties for the set aside for committee ba The Home posed of 29 girls from a Bryan area. The MSC in charge of student-prof booth in the ball season, mas and Ma

House (because of d Dance in) May Start The Home starting pite MSC will gill be Melvi an informal ten by SMU MSC Assembe start. W Rodney had two losses committee, as is made posuties for the set aside for committee ba The Home posed of 29 girls from a Bryan area. The MSC in charge of student-prof booth in the ball season, mas and Ma

House (because of d Dance in) May Start The Home starting pite MSC will gill be Melvi an informal ten by SMU MSC Assembe start. W Rodney had two losses committee, as is made posuties for the set aside for committee ba The Home posed of 29 girls from a Bryan area. The MSC in charge of student-prof booth in the ball season, mas and Ma

House (because of d Dance in) May Start The Home starting pite MSC will gill be Melvi an informal ten by SMU MSC Assembe start. W Rodney had two losses committee, as is made posuties for the set aside for committee ba The Home posed of 29 girls from a Bryan area. The MSC in charge of student-prof booth in the ball season, mas and Ma

House (because of d Dance in) May Start The Home starting pite MSC will gill be Melvi an informal ten by SMU MSC Assembe start. W Rodney had two losses committee, as is made posuties for the set aside for committee ba The Home posed of 29 girls from a Bryan area. The MSC in charge of student-prof booth in the ball season, mas and Ma

House (because of d Dance in) May Start The Home starting pite MSC will gill be Melvi an informal ten by SMU MSC Assembe start. W Rodney had two losses committee, as is made posuties for the set aside for committee ba The Home posed of 29 girls from a Bryan area. The MSC in charge of student-prof booth in the ball season, mas and Ma

House (because of d Dance in) May Start The Home starting pite MSC will gill be Melvi an informal ten by SMU MSC Assembe start. W Rodney had two losses committee, as is made posuties for the set aside for committee ba The Home posed of 29 girls from a Bryan area. The MSC in charge of student-prof booth in the ball season, mas and Ma

House (because of d Dance in) May Start The Home starting pite MSC will gill be Melvi an informal ten by SMU MSC Assembe start. W Rodney had two losses committee, as is made posuties for the set aside for committee ba The Home posed of 29 girls from a Bryan area. The MSC in charge of student-prof booth in the ball season, mas and Ma

House (because of d Dance in) May Start The Home starting pite MSC will gill be Melvi an informal ten by SMU MSC Assembe start. W Rodney had two losses committee, as is made posuties for the set aside for committee ba The Home posed of 29 girls from a Bryan area. The MSC in charge of student-prof booth in the ball season, mas and Ma

House (because of d Dance in) May Start The Home starting pite MSC will gill be Melvi an informal ten by SMU MSC Assembe start. W Rodney had two losses committee, as is made posuties for the set aside for committee ba The Home posed of 29 girls from a Bryan area. The MSC in charge of student-prof booth in the ball season, mas and Ma

House (because of d Dance in) May Start The Home starting pite MSC will gill be Melvi an informal ten by SMU MSC Assembe start. W Rodney had two losses committee, as is made posuties for the set aside for committee ba The Home posed of 29 girls from a Bryan area. The MSC in charge of student-prof booth in the ball season, mas and Ma

House (because of d Dance in) May Start The Home starting pite MSC will gill be Melvi an informal ten by SMU MSC Assembe start. W Rodney had two losses committee, as is made posuties for the set aside for committee ba The Home posed of 29 girls from a Bryan area. The MSC in charge of student-prof booth in the ball season, mas and Ma

House (because of d Dance in) May Start The Home starting pite MSC will gill be Melvi an informal ten by SMU MSC Assembe start. W Rodney had two losses committee, as is made posuties for the set aside for committee ba The Home posed of 29 girls from a Bryan area. The MSC in charge of student-prof booth in the ball season, mas and Ma

House (because of d Dance in) May Start The Home starting pite MSC will gill be Melvi an informal ten by SMU MSC Assembe start. W Rodney had two losses committee, as is made posuties for the set aside for committee ba The Home posed of 29 girls from a Bryan area. The MSC in charge of student-prof booth in the ball season, mas and Ma

House (because of d Dance in) May Start The Home starting pite MSC will gill be Melvi an informal ten by SMU MSC Assembe start. W Rodney had two losses committee, as is made posuties for the set aside for committee ba The Home posed of 29 girls from a Bryan area. The MSC in charge of student-prof booth in the ball season, mas and Ma

House (because of d Dance in) May Start The Home starting pite MSC will gill be Melvi an informal ten by SMU MSC Assembe start. W Rodney had two losses committee, as is made posuties for the set aside for committee ba The Home posed of 29 girls from a Bryan area. The MSC in charge of student-prof booth in the ball season, mas and Ma

House (because of d Dance in) May Start The Home starting pite MSC will gill be Melvi an informal ten by SMU MSC Assembe start. W Rodney had two losses committee, as is made posuties for the set aside for committee ba The Home posed of 29 girls from a Bryan area. The MSC in charge of student-prof booth in the ball season, mas and Ma

House (because of d Dance in) May Start The Home starting pite MSC will gill be Melvi an informal ten by SMU MSC Assembe start. W Rodney had two losses committee, as is made posuties for the set aside for committee ba The Home posed of 29 girls from a Bryan area. The MSC in charge of student-prof booth in the ball season, mas and Ma

House (because of d Dance in) May Start The Home starting pite MSC will gill be Melvi an informal ten by SMU MSC Assembe start. W Rodney had two losses committee, as is made posuties for the set aside for committee ba The Home posed of 29 girls from a Bryan area. The MSC in charge of student-prof booth in the ball season, mas and Ma

House (because of d Dance in) May Start The Home starting pite MSC will gill be Melvi an informal ten by SMU MSC Assembe start. W Rodney had two losses committee, as is made posuties for the set aside for committee ba The Home posed of 29 girls from a Bryan area. The MSC in charge of student-prof booth in the ball season, mas and Ma

House (because of d Dance in) May Start The Home starting pite MSC will gill be Melvi an informal ten by SMU MSC Assembe start. W Rodney had two losses committee, as is made posuties for the set aside for committee ba The Home posed of 29 girls from a Bryan area. The MSC in charge of student-prof booth in the ball season, mas and Ma

House (because of d Dance in) May Start The Home starting pite MSC will gill be Melvi an informal ten by SMU MSC Assembe start. W Rodney had two losses committee, as is made posuties for the set aside for committee ba The Home posed of 29 girls from a Bryan area. The MSC in charge of student-prof booth in the ball season, mas and Ma