

M Garden Club Sets Spring Flower Show

arden Club will lower show April onal Building of erian Church. Price is general show. She will following com- tee, Mrs. W. U. n; Mrs. C. E. L. S. O'Bannon, Ray George and A. E. Nelson; is, Mrs. Howard dule, Mrs. Arm- ospitality, Mrs. ; classification, eley and Mrs. J. arren Thompson, yton and Mrs. P. ent, Mrs. H. R. E. Davis, and aplane; publicity, and Mrs. Wayne nents and class Armstrong Price; J. E. Roberts. ur Sections w will be divided Section one will tted plants in the artment of flori- ce architecture. e a stage setting Section three will for the contem- section four will horticultural ex- ection three are ts featuring pro- esign, materials, riginality. l be divided into a) small and (b) nents, Mrs. Frank an; 2. (a) formal epernes. ugh will be chair- split compliment as a component Taylor is chair- analagous harmony ainers. Classes 3 or. Classes esign classes and each are the fol- assymetrical on . Angell; class 6,

"In the Japanese" manner, Mrs. R. O. Reed and Mrs. Kaji Hidaka; class 7, visual balance, Mrs. Philip Murdock. Classes 8, 9 and 10 are feature materials. The classes and chair- man are class 8, driftwood, (a) fresh flowers and (b) dried materi- als, Mrs. Fred Weick; Class 9, landscape-named section of Texas, Mrs. C. C. Doak; class 10 foliage, Mrs. Fred Hale. The classes featuring distinc- tion and originality will be class 11, holiday tables with Mrs. R. D. Lewis as chairman and Mrs. J. J. Woolket chairman of class 12, es- quire. **Open To Men** Class 12 is open to all men of College Station. Section four, the horticultural exhibits will be divided into thir- teen classes. Class one will be roses, (a) hybrid teas, (b) poly- anthas, (c) floribundas, climbing and (e) collection (six or more named varieties) Class two will be bulbs or plants grown as bulbs; (a) one stem specimen and (b) collections (three to six varieties). Corms (gladiolas, etc.) will make up class three; (a) one stem specimen and (b) collection (three or more named varieties). Class four will be lilies and so- called lilies, (a) amaryllis (colors judged separately), (b) calla, (c) Easter lilies, (d) hemerocallis (single and double) and (e) mis- cellaneous. Iris will make up class 5; (a) one stem specimen and (b) collection (three or more named varieties). Class 6, annuals, will be judged according to variety and kind; (a) three stems to each entry and (b) collection (six or more named kinds). Comprising class 7 are the per- ennials, which will be judged ac- cording to variety, (a) three stems to each entry and (b) collection (three or more named kinds). Class 8 will be flowering vines and class 9 flowering shrubs. Vegetables, class 10, will be judged according to kind, (a) three specimen to each entry and (b) collection (three or more named kinds). Class 12, berries, will be judged according to kind. Class 13, potted plants; (a) flowering and (b) foliage, must have been in the possession of the exhibitor for at least three months. Class 14 will include any worthy exhibits not provided for in the schedule. Entries for the show will be received from 8 a. m. until noon at which time judging will begin.

200 Expected At MSC Banquet

About 150 to 200 people are expected to attend the annual MSC Directorate Banquet April 9, said Lamar McNew, directorate presi- dent.

The smorgasbord banquet will be held in the MSC Ballroom. Those invited include college offi- cials and members of the board of directors.

Before the banquet the outgoing president will discuss what was accomplished during his term. Awards will be presented to council and committee members who have done outstanding work dur- ing the year. After the presenta- tion the incoming president will outline his plans for directorate improvements.

Ag Fraternity Selects Members

Forty-one new members were selected by the Texas Alpha Chap- ter of Alpha Zeta Monday night in Room 3C of the MSC.

The new Alpha Zeta members were selected on the basis of character, scholarship and potential leadership qualities in the field of agriculture.

Scholastic records of approxi- mately 80 junior and senior agri- culture students were reviewed to determine possible candidates for membership in the A&M chapter, said Gene Steed, chancellor of the local branch.

Initiation of new members will be held April 20 and the names of new members will be released at that time.

Drill Field in Mess After Rugged Duty

Heavy footed marching of A&M cadets has left the main drill field in the same condition as a year ago. It's one big mess.

The House and Grounds depart- ment of the college spent \$2,000 reworking and seeding the field with Bermuda grass last year. Now it's in poor condition because of heavy drills, the department re- ports.

The military department has made no complaint about the drill field, so maintenance of the field is limited to mowing the grass.

DYERS-FUR STORAGE HATTERS

American

DIAL **LAUNDRY & CLEANERS**

2-1585

210 S. Main Bryan Pho. 2-1584

It's the Real Thing . . .

Italian Spaghetti and Meat Balls

SERVED EVERY SUNDAY FROM 11 A.M.

Try a Big Steaming Platter Today!

Triangle Drive-Inn

A Free Easter Bonnet

We will pay for the Easter Bonnet of some lucky customer this weekend. Merely register on your regular shopping trips between now and 3 p.m. Saturday, at which time some lucky customer will be awarded \$25 in cash — we hope this will cover the cost of a new hat. You still will have time—if you are in town at that time — to dash in and make the purchase. BUT, you do not have to be present to win.

Dollar Day Grocery Specials

- Libby's CATSUP - 14 Oz. 6 for \$1
- Libby's or Doles Sliced or Crushed PINEAPPLE . . 4 for \$1
- 46 Oz. Libby's TOMATO JUICE 4 cans
- 300 Cans Hunt's Sliced or Halves PEACHES 5 cans
- 303 Cans Libby's CUT GREEN BEANS 5 cans
- 303 Cans Libby's Country Gentleman WHITE CORN - Cream Style 5 cans
- No. 2 Cans Kimbell's Grade A TEXAS GRAPEFRUIT JUICE 11 cans
- 12 Oz. Heart's Delight PEACH OR APRICOT NECTAR 11 cans
- 2 Lb. Jars Kimbell's PEACH OR APRICOT PRESERVES 2 jars
- All Brands Strained BABY FOODS 11 cans

7c Per Carton Factory Deal—Swift's Jewel

SHORTENING 3 lb. carton 69c

- For Better Baking CRISCO . . . 3 lb. can 79c
- Popular Brands CIGARETTES . cart. \$2.09
- Armour's Cloverbloom 99 OLEO 4 lbs. \$1
- Assorted Kinds—Pillsbury's CAKE MIXES . . 3 for \$1
- Tall Cans Carnation or PET MILK . . . 7 cans \$1
- 5 Lb. Bag Kimbell's FLOUR each 39c
- Now on Sale—April Issue Better Living Magazine 5c
- Sanitary 1/2 Gal.—Pasteurized—(Plus Bot. Deposit) MILK 2 for 79c

- ### FRESH FRUITS & VEGETABLES
- No. 1 Idaho Russett—Plastic Bag POTATOES 10 lbs. 63c
 - Size 4 (Large) Arizona LETTUCE 2 heads 21c
 - Sweet Texas Number 1—Plastic Bags CARROTS 2 bags 19c
 - Size 432 Calif. Sunkist LEMONS doz. 29c

- ### Frozen Foods
- Holiday—1/2 Gal MELLORINE 2 for \$1.00
 - Horr. Brand—CHOPPED BROCCOLI 2 pkgs. 39c
 - 12 Oz. Birdseye SLICED STRAWBERRIES . 3 cans \$1.00
 - 19 Brand ORANGE JUICE . . 2 cans 25c
 - Birdseye—FILETS of PERCH 1 lb. pkg. 43c

Southside Food Market

STORE HOURS: 8 a.m.—7 p.m. Daily. Open 30 Minutes Earlier Fri. & Sat. Closed Sundays.

WE RESERVE THE RIGHT TO LIMIT QUANTITIES

At Southwest Corner of the Campus
A Complete One-Stop Market.

Ballard Biscuits - can 5c
(Limit 3 to a Customer)

Market Specials

- EASTER HAMS ●
- Hormel Precooked HAM—Shank End lb. 55c
- Butt End lb. 65c
- HORMEL BREAKFAST BACON Dairy, 1st Grade lb. 65c
- Midwest lb. 55c
- Hormel ALL MEAT FRANKS lb. 49c
- Heart O' Texas BAKING HENS lb. 55c
- Old Time HOOP CHEESE lb. 55c
- Choice Baby Beef POT ROAST lb. 43c
- Freshly Ground GROUND BEEF lb. 43c
- From Choice Baby Beef VEAL CUTLETS lb. 89c
- Tender ROUND STEAK lb. 69c
- From Choice Baby Beef SEVEN STEAK lb. 59c
- Choice Baby Beef Brisket ROAST or STEW lb. 33c
- No. 1 Lean, LoIn End PORK CHOPS or ROAST lb. 55c

COFFEE

Nothing spurs our indignation like an injustice done. Some four years ago, the Brazilian government, which has a monopoly on our chief source of coffee, devalued its currency in terms of the dollar. In effect, this was a boycott on our products competing for Brazilian business. At the same time, Brazilian exports to us should have dropped some 40% in cost to us. But, they pegged coffee on the dollar market, so that the freeze worked in only one direction—to their benefit. Now they further advance the coffee price to us, which considering the difference in currency values amounts to fully a doubling of the price to their producers. With this in mind, I for one have decided no longer to sell coffee below what it costs me, at least until the end of May. This will give my competitors plenty of time to ponder the same thing. I simply do not think it wise to encourage abnormal coffee consumption when nothing except a slowing of demand will bring down the price. Further, I will sell coffee during this period of time exactly on the wholesale market. Bear with us, please.

COFFEE

- AT TODAY'S COST —
- Maxwell House lb. 90c
 - Folger's lb. 93c

Track Meet

(Continued from Page 2)

cleared over six feet three inches. If Pete Mayeaux of the Cadets can equal his best distance in the javelin, he will beat the throw made by Klein of Texas last year. Klein won the event with a throw of 182 feet and Mayeaux has thrown 188 feet this year. Roy Dollar and Tom Dollahite, have also bettered this distance this season. Bobby Ragsdale of the Cadets, won the broadjump last year with a jump of 22 feet 10 inches. Last week, Ragsdale jumped 24 feet two and 3/4 inches. The Pole vault record is held by Jack Simpson of A&M with a vault of 13 feet six inches. Malcom Marks of the Aggies vaulted that high last week in Austin. Marks could possibly break the record and very possibly tie it. The Aggies will be favored to win their fifth victory of the season.

PLUMBING

SUPPLIES

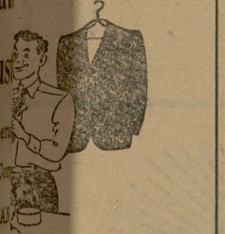
To Fit the Need For Every Home

Battle's PLUMBING CO.

109 Walton Dr. Ph. 4-4686
College Station

BATTALION CLASSIFIED

- LOST •
- ONE redish fawn Jersey heifer, about 500 pounds. Chain around neck. Information leading to her whereabouts will be rewarded. R. H. Brock, Box 4744, College Station.
- WANTED •
- PART TIME HELP wanted for announcing and selling. Contact Station WTAW.
- WANTED TO RENT •
- FACULTY family desire house trailer from June to September. Call 6-6188.
- WORK WANTED •
- TYPIING—reasonable rates. Phone 3-1776 after 5.
- Directory of Business Services •
- INSURANCE of all kinds. Homer Adams North Gate. Call 4-1217.
- K&B DRIVING RANGE •
- Open Sunday March 1 On Fin Feather Road Bryan, Texas
- Prompt Radio Service •
- CALL —
- Sosolik's Radio Service 712 S. Main St. BRYAN PH. 2-1941



Cleaning
Initial of Good
Coming
CLEAN
SERVICE
EXPERT WORK
Home
Last of
MPUS
ANERS

FOR TRADE Rates
per insertion with a
pace rate in classified
per column-inch. Send
STUDENT ACTIVITIES
must be received in
office by 10 a.m. on the
ation.

FOR RENT
condition. See Project
phone 4-
RDW
SHO
TEN-T
R RENT
furnished house in Col-
-5358.
Rt. Lee
OMETRIST
East 26th
for Appointment
om Court House)