



Fine Food
Costs less!
HERE!

AT

MILLER'S

Gold Medal - Bewley's - Gladiola Flour ⁵ lbs. **39c**

Ballard Biscuits . . . 2 cans **21c** Tuxedo Tuna . . . 1/2 size can **17c**

Kaiser 25 Ft. Household Foil **23c** Large Tide . . . **25c** Sunnyland Oleo . **17c**

8 Oz. **RITZ CRACKERS** **20c**

1 Lb. **RITZ CRACKERS** **29c**

6 Oz. **NBC WAFFLE CREAMS** . . . **25c**

Hunt's—300 Size **FRUIT COCKTAIL** 2 cans **45c**

Frost—300 Size **CROWDER PEAS** 3 cans **39c**

Stokely—303 Size—Cream Style **GOLDEN CORN** 3 cans **49c**

303 Size—Stokely **PARTY PEAS** 2 cans **49c**

5 Lbs. **BARK DOG FOOD** **75c**

12 Oz. Everbest **GRAPE JELLY** 2 for **49c**

4 Oz. Towie Maraschino **CHERRIES** **15c**

12 oz. Rainbo Sweet **MIDGET PICKLES** **39c**

Quart—Holsum **SALAD DRESSING** **49c**

SOFTTEX TISSUE 3 rolls **37c**

2 3/4 Lb. Softasilk **CAKE FLOUR** **43c**

20 Oz. Betty Crocker—Honey Spice **CAKE MIX** **37c**

20 Oz. Betty Crocker—Yellow **CAKE MIX** **37c**

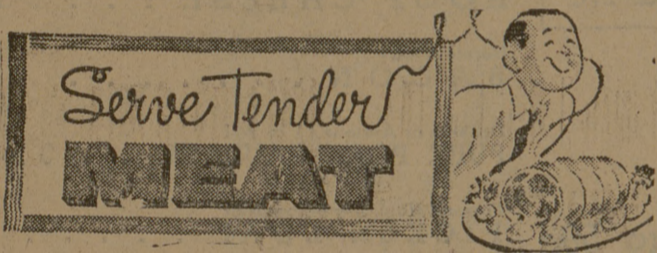
Pint—Prem **PLASTIC STARCH** **37c**

Pint **WESSON OIL** **33c**

Gold Medal **FLOUR** 25 lbs. **\$1.95**

10 Oz. Jolly Time **WHITE POPCORN** **21c**

26 Oz. **ELECTRIC SOL COMPOUND** . **29c**



U. S. Choice Beef, Square Cut **SHOULDER ROAST** . lb. **49c**

Prime **RIB ROAST** . . . lb. **59c**

End Cut **PORK CHOPS** . . lb. **45c**

Raths Sunvale **BACON** . . . lb. **37c**

Wisconsin Black Rind **CHEESE** . . . lb. **59c**

Armour Star **PICNICS** . . . lb. **39c**

Medium Select **OYSTERS** . . . lb. **79c**

Veal Shoulder **SHOULDER ROAST** . lb. **45c**



Pictsweet **Broccoli Cuts** . 2 for **37c**

Pictsweet—MIXED **Butter Beans** . 2 for **37c**

Pictsweet **Vegetables** . . 2 for **37c**

19 Brand **Orange Juice** . 2 for **25c**



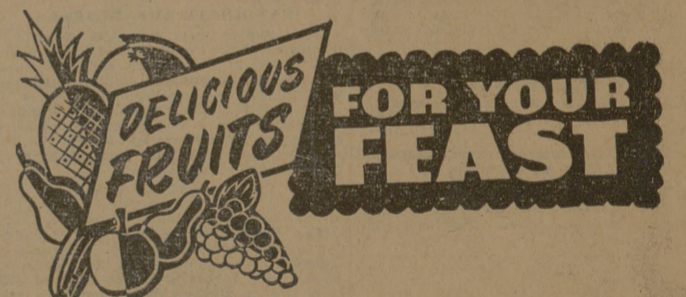
50c Size **IPANA** **35c**

63c Value (Plus Tax) **ARRID** **49c**

53c Size—4 Oz. Wildroot (Plus Tax) **CREAM OIL** **43c**

\$1.00 Luster Cream **SHAMPOO** **65c**

39c Giant Cashmere **BOUQUET TALC** **29c**



Delicious **APPLES** . . . 2 lbs. **25c**

CAULIFLOWER . ea. **23c**

Sunkist **ORANGES** . . 5 lbs. **29c**

Cello Bag **CARROTS** . . 2 for **17c**

Idaho **POTATOES** . . 10 lbs. **57c**

MILLER'S SUPER MARKET

FOR YOUR SHOPPING CONVENIENCE WE ARE OPEN
7 P.M. TO 9 P.M. — 7 DAYS A WEEK
SPECIALS FOR THURSDAY P. M., FRIDAY and SATURDAY — FEB. 12 - 13 - 14